

1992

REPAIR PARTS MANUAL 36" - 11 H.P. LAWN TRACTOR MODEL C3554-210

ONE YEAR LIMITED WARRANTY

For one (1) year from date of purchase by the first consumer for residential use (thirty (30) days commercial use), NOMA Outdoor Products Incorporated warrants that it will replace free of charge, including labor, any original part of any NOMA Outdoor Products Incorporated product found to be defective by any authorized Service Dealer or the factory, except the battery which is warranted for ninety (90) days from date of purchase.

This warranty does not cover engine, transmission, transaxle or differential (these items are covered by their manufacturer's own warranty). This warranty does not cover parts that have failed due to normal wear or parts that have failed subject to misuse or abuse. Transportation of the unit or part to and from an authorized Service Dealer or factory is the responsibility of the owner.

A step by step explanation as to what procedure should be followed for this warranty is:

1. If a part becomes defective, contact the store where the unit was purchased for the name and address of the authorized Service Dealer nearest to you.
2. If you cannot locate an authorized Service Dealer, write Service Department of NOMA Outdoor Products Incorporated for the name and address of the authorized Service Dealer in your area or call the Service Department at 1-901-422-1690.
3. Return the defective product, along with proof of purchase to such authorized Service Dealer for replacement of any defective part where covered by this warranty.

There is no other express warranty. Implied warranties, including those of merchantability and fitness for a particular purpose are limited to one (1) year from date of purchase. Liability for incidental or consequential damages are excluded.

Some states do not allow limitations on how long an implied warranty lasts, so the above limitation may not apply to you. Some states do not allow the exclusion of incidental or consequential damages, so the above exclusion may not apply to you. This warranty gives you specific legal rights, and you may have other rights which vary from state to state.

NOMA Outdoor Products Incorporated

Caller 8000

Jackson, TN 38308-8000

UNIT PARTS AND SERVICE

Fill in and mail the registration card packed with the unit. For service other than covered in this manual, contact an authorized service dealer. A nationwide parts and service organization has been established to provide locally available parts and service. A list of authorized parts distributors has been included in this manual. When ordering repair parts, always give the following information: 1. The Part Name; 2. The Part Number; 3. The Quantity desired; 4. The Full (eight digit) Model Number of the unit. The model number will be found on a plate attached to the unit.



Look for this symbol. It means - ATTENTION! BECOME ALERT! A HAZARD TO OPERATOR, BYSTANDER, PROPERTY OR EQUIPMENT MAY EXIST.

NOMA Outdoor Products Incorporated

Caller 8000

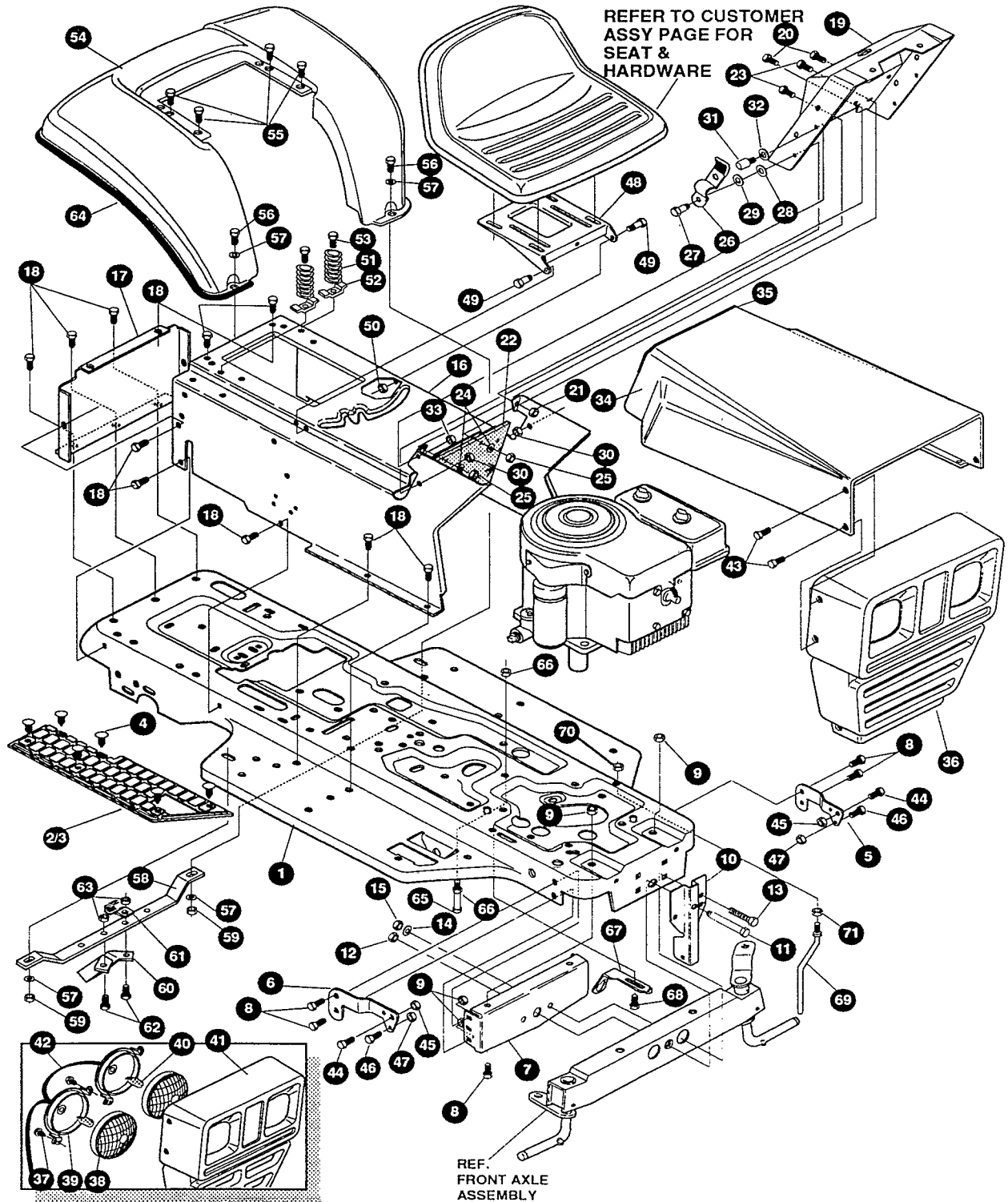
Jackson, TN 38308-8000

Part No. 323283A

7/92

36" LAWN TRACTOR MODEL C3554-210

CHASSIS & HOOD ASSEMBLY



NOTE: ALWAYS USE ORIGINAL EQUIPMENT PARTS. Use of service/replacement parts other than original equipment parts may void your warranty.

ALL UNNUMBERED ITEMS ARE INTERCHANGABLE WITH OPPOSITE SIDE

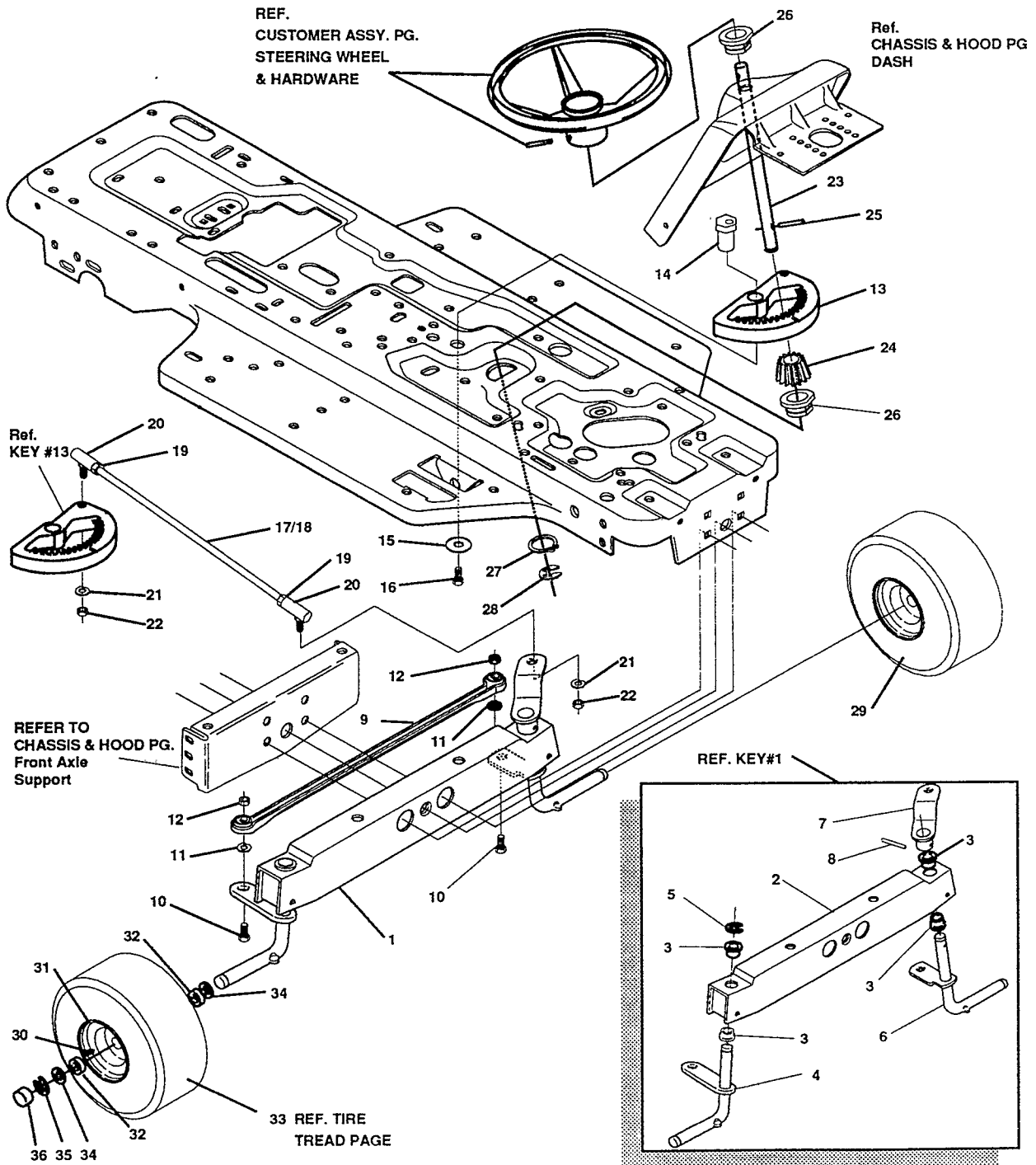
323163A

36" LAWN TRACTOR MODEL C3554-210

Key#	Part#	Description	Qty.
1	314883-860	FRAME, MAIN SF RIDER	1
2	310003	FOOTPAD, LH SF	1
3	310004	FOOTPAD, RH SF	1
4	309235	FASTENER, RATCHET	12
5	56259-853	BRACKET, GRILLE, L.H.	1
6	56260-853	BRACKET, GRILLE, R.H.	1
7	56362-853	BRKT, SUPT FRT AXLE-SF	1
8	56030	SCREW, 5/16-18X.75WDFLLK	6
9	55273	NUT, 5/16-18 HXWDFLLK	6
10	56261-860	BRACKET, FRONT HANGER	1
11	50720	BOLT, .625X2.875 SPSH 1/2-20	1
12	274654	NUT, 1/2-20 REGHXCTRLK	1
13	122201	SCREW, 3/8-16X2.75 HHC	1
14	2483	WASHER, .39IDX1.25DX.07 BELLVIL	1
15	1499	NUT, 3/8-16 REGHXCTRLK	1
16	309732-860	CONSOLE,SF GPWR	1
17	56235-860	CONSOLE, REAR COVER	1
18	995346	SCREW, 1/4-20X .50 WAHHTAP	15
19	321349	DASH NO ILL/AMMETER ELEC	1
20	995338	SCREW, 1/4-20X .63 HHWATAP	2
21	50352	NUT, 1/4-20 WDFLLK TOPLOCK	2
22	312306	BAFFLE CONSOLE	1
23	995338	SCREW, 1/4-20X .63HHWATAP	2
24	120392	WASHER, FLAT .281X .63X.065	2
25	1502	NUT, 1/4-20 REGHEXCTRLK	2
26	57159	LATCH, .94WDX.047 ASSY HOOD	2
27	8482	BOLT, .375X .156 HSH 5/16-18	2
28	120394	WASHER, FLAT .406X .81X.065	2
29	120393	WASHER, FLAT .344X .69X.065	2
30	1498	NUT, 5/16-18 REGHEXCTRLK	2
31	53446	PIN, 5/16-18 HOOD LATCH GR2-	2
32	138538	WASHER, REGINTLK.320X.61X.03	2
33	45174	NUT, 5/16-18 HEXWDFLLK WHIZ	2
34	53954-860	HOOD	1
35	55021	TRIM, STRIP, BLACK	23.750 IN
36	56227	GRILLE ASSY G-7	1
37	50668	SCREW, 10-14X .50 WAHHTAP	4
38	52570	LAMP LENS	2
39	52571	LAMP BEZEL	2
40	52572	BULB, HEADLAMP	2
41	53402	GRILLE	2
42	56189	WIRE ASSY, HEADLAMP	1
43	57215	SCREW, 5/16-9X .75 WAHHPAS	4
44	120233	BOLT, 3/8-16 X 1.00 HHC GRZ	2
45	1499	NUT, 3/8 - 16 REGHEXCTRLK	2
46	120228	SCREW, 5/16-18 X .63	2
47	1498	NUT, 5/16-18 REGHEXCTRLK	2
48	58367-860	PLATE, SEAT F-5 SF & LF	1
49	20507	BOLT, .437X .156 HSH 5/16-18	2
50	1498	NUT, 5/16-18 REGHEXCTRLK	2
51	56220	SPRING, 1.43X2.38X.162 COM SEAT	2
52	300284-953	CLAMP, SPRING	2
53	995346	SCREW, 1/4-20X .50 WAHHTAP	2
54	52470-860	FENDER F-5 SF ONLY	1
55	995346	SCREW, 1/4-20X .50 WAHHTAP	4
56	122017	SCREW, 5/16-18X1.00 HHC	2
57	446363	WASHER, FLAT .375X .88X.082	4
58	43964	SUPPORT, GUIDE	1
59	1498	NUT, 5/16-18 REGHEXCTRLK	2
60	44500	MF GUIDE, R MOWER DECK	1
61	57569	RETAINER, .31IDX.62X.03 WIRE	1
62	122017	SCREW, 5/16 - 18 X 1.00 HHC GR2Z	2
63	1498	NUT, 5/16-18 REGHEXCTRLK	2
64	55021	TRIM, STRIP	77.500 IN
65	49930	SCREW, 3/8-16X7.50 HHC	1
66	1499	NUT, 3/8-16 REGHXCTRLK	2
67	302610-853	BRACKET, SWITCH MOUNT	1
68	995346	SCREW, 1/4-20X .50 WAHHTAP	1
69	50653	GUIDE, BELT	1
70	41529	NUT, 3/8-16 HXCTRLKJAM GRD	1
71	271190	NUT, 3/8-16 HEXKEPS	1
72	323283	PARTS MANUAL ENGLISH	1
73	323282	OPERATOR'S MANUAL DANISH	1

36" LAWN TRACTOR MODEL C3554-210

STEERING ASSEMBLY



NOTE: ALWAYS USE ORIGINAL EQUIPMENT PARTS. Use of service/replacement parts other than original equipment parts may void your warranty.

ALL UNNUMBERED ITEMS ARE INTERCHANGABLE WITH OPPOSITE SIDE

313464E

36" LAWN TRACTOR MODEL C3554-210

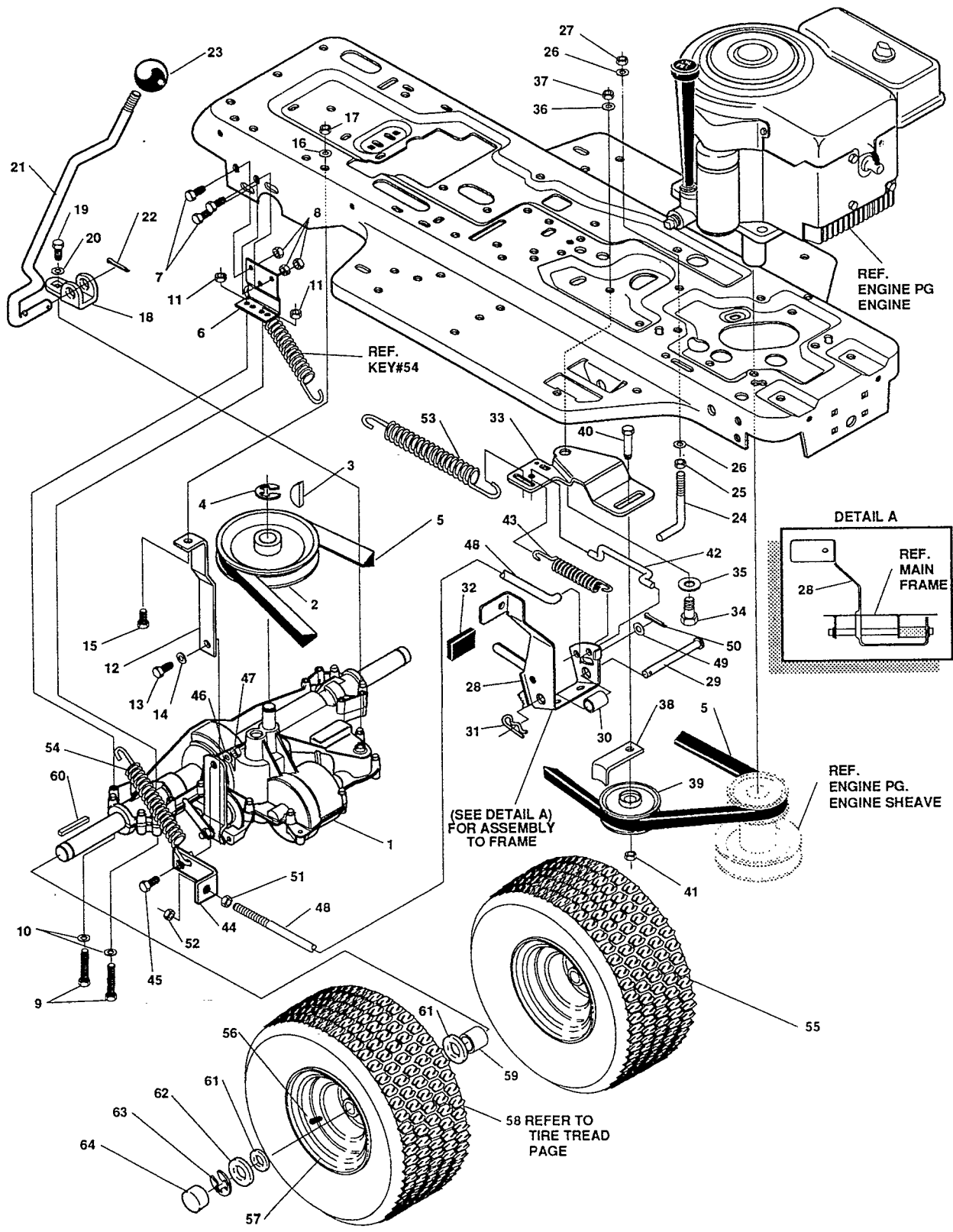
Key#	Part#	Description	Qty.
1	*	FRONT AXLE ASSEMBLY SF	1
2	56400	AXLE, FRONT	1
3	50546	BEARING, FLANGE	4
4	302668	SPINDLE, RH	1
5	36625	RING, RETEX	1
6	302667	SPINDLE, LH	1
7	49447	ARM, STEERING LH	1
8	454565	PIN, SPRING	1
9	302691	TIE ROD	1
10	◇ 122145	SCREW, 3/8-16X1.25 HHC	2
11	◇ 120382	WASHER, .393X.68X.10 REGSPTLK	2
12	◇ 1499	NUT, 3/8-16 REGHCTRLK	2
13	304245	SECTOR, GEAR	1
14	44011	BOLT, .750X1.40 SPSH	1
15	2483	WASHER, .39IDX1.25ODX.07	1
16	39573	SCREW, 3/8-24X1.00 NYL	1
17	56191	DRAG LINK ASSEMBLY	1
18	56190	DRAG LINK	1
19	◇ 124925	NUT, 3/8-24 REGHEXJAM	2
20	21275	BALL JOINT	2
21	◇ 120382	WASHER, REGSPTLK	2
22	◇ 120369	NUT, 3/8-24 REGHEX	2
23	44008	STEERING SHAFT	1
24	44009	PINION, STEERING SHAFT	1
25	454565	PIN, SPRING	1
26	54902	BEARING, 1.370X.50 FLANGE STEERING	2
27	39492	RING, RETEX 1.27X.05	1
28	36625	RING, RETEX .57X.05	1
29	*	ASSEMBLY, TIRE	2
30	24167	VALVE STEM	1
31	39829	WHEEL W/BEARING	1
32	39979	BEARING, 1.38ODX.753ID FLANGE	2
33		REFER TO TIRE TREAD PAGE	
34	642	WASHER, FLAT .755X1.31X.075	4
35	36625	RING, RETEX .57X.05	2
36	40394	HUB CAP	2

◇ INDICATES STANDARD HARDWARE ITEMS.

* ORDER INDIVIDUAL PARTS.

36" LAWN TRACTOR MODEL C3554-210

MOTION DRIVE ASSEMBLY



NOTE: ALWAYS USE ORIGINAL EQUIPMENT PARTS.
 Use of service/replacement parts other than original equipment parts may void your warranty.

**ALL UNNUMBERED
 ITEMS ARE INTERCHANGABLE
 WITH OPPOSITE SIDE**

320306A

36" LAWN TRACTOR MODEL C3554-210

Key#	Part#	Description	Qty.
1	^	TRANSAXLE FOOTE 4360-5	1
2	302745	PULLEY, V 4L 6.60 OD	1
3	3021	KEY, WDRF 606 .750X.187X.312	1
4	22053	RING, RETEX .58X.04TRU5100-62	1
5	54758	BELT, V 4L 82.00 SF DRIVE	1
6	7707	BRACKET, TRANSAXLE BLK	2
7	• 120228	SCREW, 5/16-18X .63 HHC	6
8	• 1498	NUT, 5/16-18 REGHEXCTRLK	6
9	• 180112	SCREW, 5/16-18X2.75 HHC	4
10	• 120393	WASHER, FLAT .344X .69X.065	4
11	• 1498	NUT, 5/16-18 REGHEXCTRLK	4
12	309770	BRKT, STABILIZER	1
13	• 35498	SCREW, 5/16-18X .75 WAHTAP	1
14	• 120638	WASHER, HVSPTLK .328X.60X.09	1
15	• 122017	SCREW, 5/16-18X1.00 HHC	1
16	• 138485	WASHER, EXLK .320X.61X.03	1
17	• 1498	NUT, 5/16-18 REGHEXCTRLK	1
18	57480	BRKT, SHIFT	1
19	• 56255	SCREW, 1/4-28X .75 NYLHHC	1
20	• 57157	WASHER, .750X.250 SP-TRANSAXLE	1
21	302283	SHIFT LEVER	1
22	137185	PIN, COTTER .125 DIA X1.00LG	1
23	55514	KNOB, SHIFT ROUND	1
24	49896	BELT GUIDE	1
25	• 271184	NUT, 5/16-18 HEXKEPS	1
26	• 120393	WASHER, FLAT .344X .69X.065 Z	2
27	• 1498	NUT, 5/16-18 REGHEXCTRLK	1
28	302603	ASSY, BRAKE PEDAL S.F	1
29	319676	ROD, PIVOT	1
30	302601	SPACER, .53IDX.62DX1.406 SLEEVE	1
31	56180	PIN, HAIR	1
32	48761	PAD, CLUTCH/BRAKE PEDAL	1
33	1306	IDLER ARM BRKT TRACTION	1
34	41890	BOLT, .625X .218 HSSH 5/16-18	1
35	• 4107	WASHER, FLAT .635X1.31X.07	1
36	• 45602	WASHER, FLAT .333X .87X.119	1
37	• 1498	NUT, 5/16-18 REGHEXCTRLK	1
38	39659	RETAINER, STRAP BELT	1
39	35374	PULLEY, IDLER V4L 3.06X .62	1
40	45892	BOLT, 3/8-16X1.50 CARR	1
41	• 1499	NUT, 3/8-16 REGHXCTRLK	1
42	43980	ROD, .268 DIA CLUTCH	1
43	50562	SPRING, 3/8ODX1.625X.055	1
44	54723	BRACKET, BRAKE ROD	1
45	20507	BOLT, .437X .156 HSSH 5/16-18	1
46	• 120393	WASHER, FLAT .344X .69X.065	1
47	• 1498	NUT, 5/16-18 REGHEXCTRLK	1
48	310189	BRAKE ROD, RIDER	1
49	• 120393	WASHER, FLAT .344X .69X.065	1
50	121222	PIN, COTTER .090/.086X.75LG	1
51	• 271184	NUT, 5/16-18 HEXKEPS	1
52	• 1498	NUT, 5/16-18 REGHEXCTRLK	1
53	49276	SPRING, 3/4 ODX6.75X.091	1
54	35410	SPRING, .071 X .62 X 4.37	1
55	*	TIRE , PU 18X9.5X8 TURWHI	2
56	24167	VALVE STEM	1
57	41105	WHEEL&HUB ASSY 9.50X8 WHITE	1
58		REFER TO TIRE TREAD PAGE	
59	57479	SPACER, .75 X 1.25 X 1.32	2
60	52928	KEY, SQUARE .187SQX2.25LG	2
61	• 642	WASHER, FLAT .755X1.31X.075	4
62	• 42815	WASHER, FLAT .755X1.53X.07	2
63	36625	RING, RETEX .57X.05	2
64	40394	CAP, 1.500ID X 7/8LG HUB	2

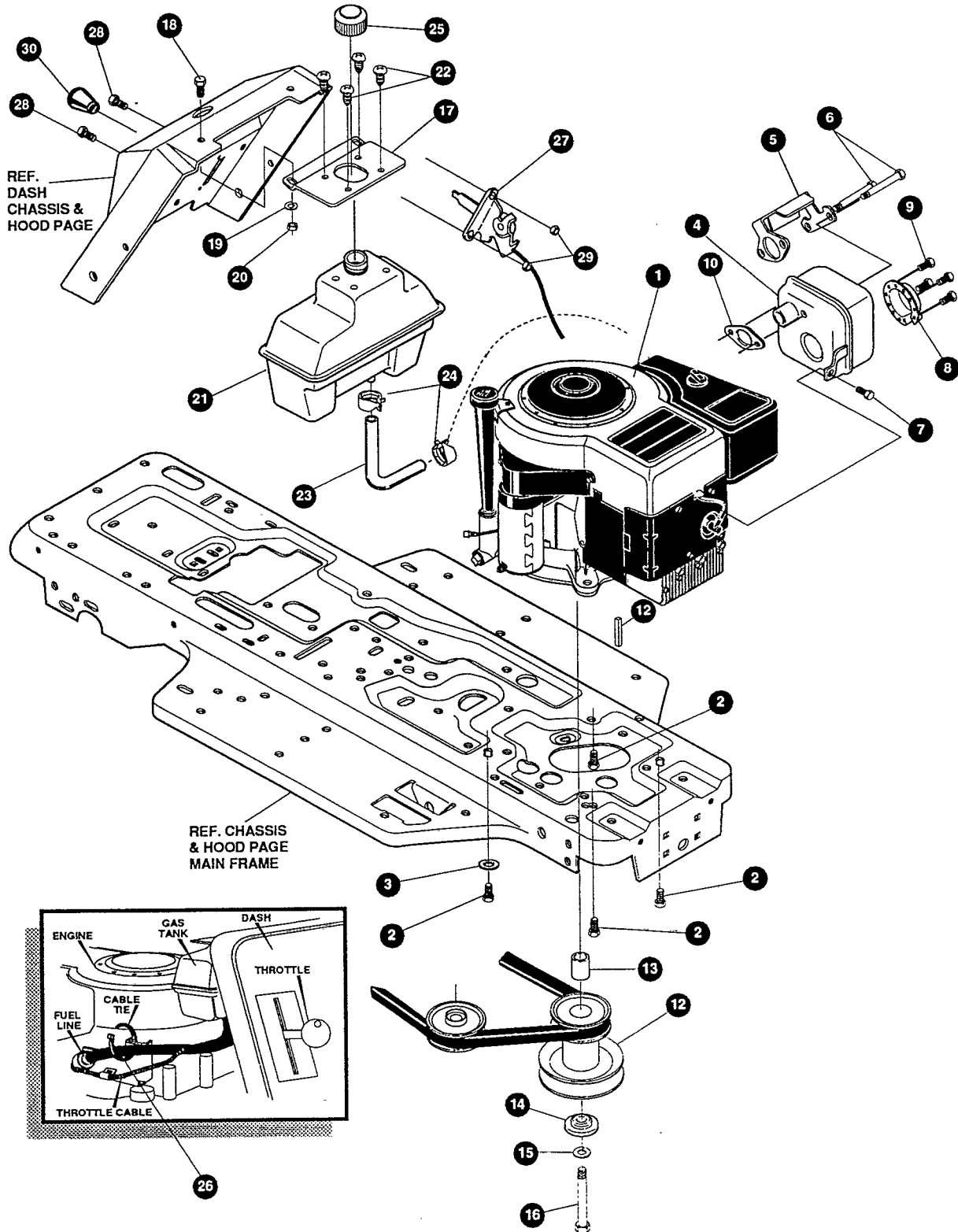
• INDICATES STANDARD HARDWARE ITEMS.

* ORDER INDIVIDUAL PARTS.

^ CONTACT YOUR NEAREST FOOTE TRANSAXLE DEALER FOR PARTS & SERVICE.

36" LAWN TRACTOR MODEL C3554-210

ENGINE & CONTROL ASSEMBLY



NOTE: ALWAYS USE ORIGINAL EQUIPMENT PARTS. Use of service/replacement parts other than original equipment parts may void your warranty.

ALL UNNUMBERED ITEMS ARE INTERCHANGABLE WITH OPPOSITE SIDE

323157A

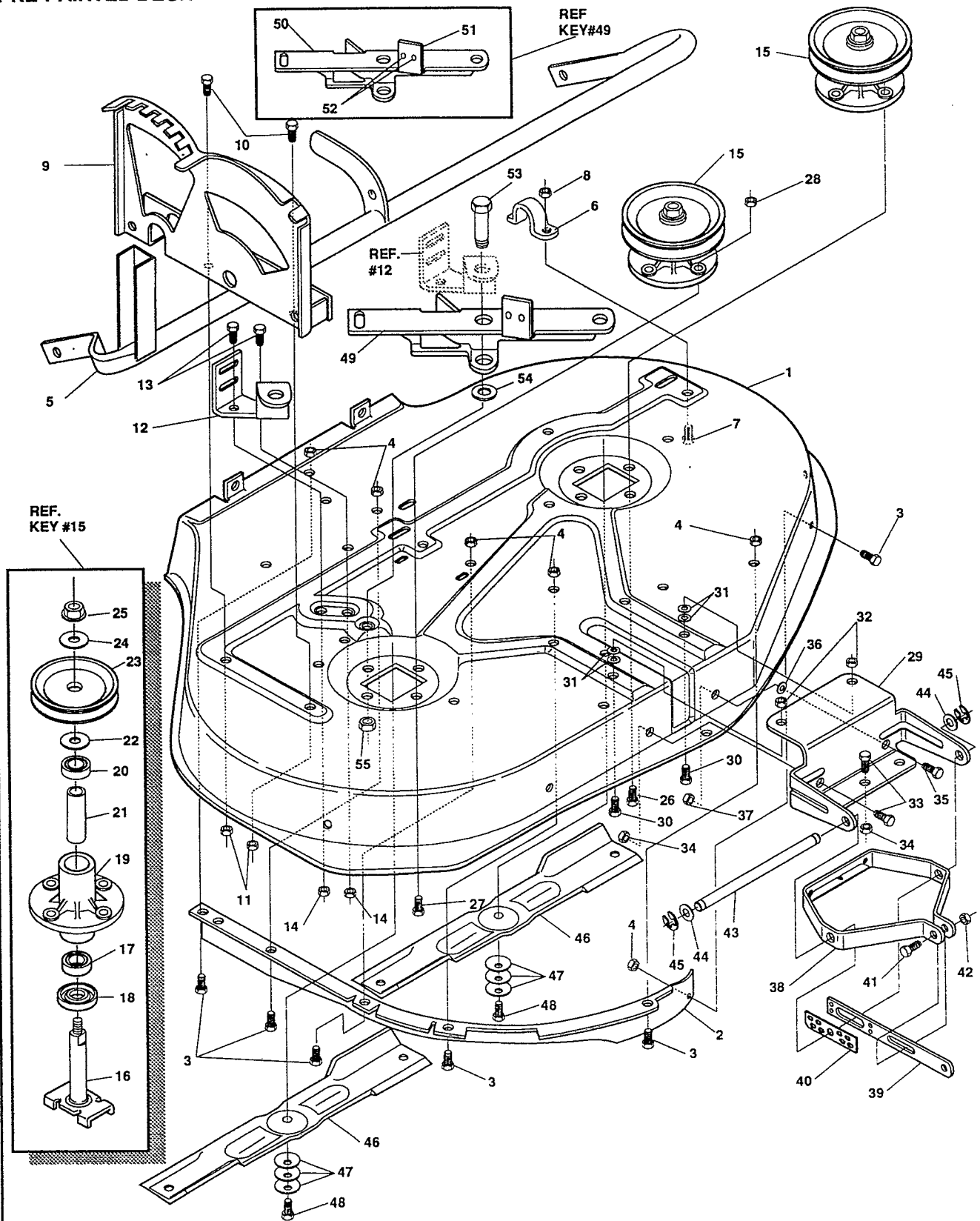
36" LAWN TRACTOR MODEL C3554-210

Key#	Part#	Description	Qty.
1	ENGINE	11 HP B&S VER ELEC. (SEE ENGINE MANUAL)	1
2	50947	SCREW, 3/8-16X1.25 WAHHTAP	4
3	138489	WASHER, EXLK .384X.69X.04	1
4	305406	MUFFLER, B&S SQ.LO-TONE 1	1
5	305409	SHIELD, MUFFLER B&S SQ.	1
6	305407	BOLT, .437X4.340 HSH5/16-18	2
7	305410	SCREW, 1/4-20X .50 HHCSEMS	1
8	56472	DEFLECTOR SIDE OUT (1
9	35287	SCREW, #8-32X .38 HHWATAP	4
10	46708	GASKET, MUFFLER	1
11	315317	PULLEY, ENG 3.0D X 4.0LG X 5.0D	1
12	303151	KEY, SQUARE .249SQX4.50LG	1
13	304246	SPACER, 1.01X1.484 ENGINE PULLEY	1
14	56431	WASHER, .980IDX1.38ODX.437PILOT	1
15	120383	WASHER, REGSPTLK.459X.78X.12	1
16	433146	SCREW, 7/16-20X4.25 HHC BLK	1
17	55387	BRACKET, FUEL TANK SUPT	1
18	120854	SCREW, 1/4-20X .63 HHC	2
19	120393	WASHER, FLAT .344X .69X.065	2
20	1502	NUT, 1/4-20 REGHEXCTRLK	2
21	314989	TANK, FUEL 1 GAL	1
22	49050	SCREW, 1/4-10X .75PHPNTAP	4
23	47452	GAS LINE, .25ID BULK LENGTH	12IN
24	48672	CLAMP, FUEL LINE	2
25	46704	GAS CAP, 1-1/2-7 THD	1
26	57444	TIE, CABLE	1
27	320031	THROTTLE CONTROL	1
28	35291	SCREW, 10-24X.50 SLHHMA	2
29	271166	NUT, #10-24 HEXKEPS	2
30	50607	KNOB, ROUND THROTTLE	1

Indicates STANDARD HARDWARE ITEMS.

36" LAWN TRACTOR MODEL C3554-210

PRE-PAINTED DECK



NOTE: ALWAYS USE ORIGINAL EQUIPMENT PARTS. Use of service/replacement parts other than original equipment parts may void your warranty.

ALL UNNUMBERED ITEMS ARE INTERCHANGABLE WITH OPPOSITE SIDE

316030B

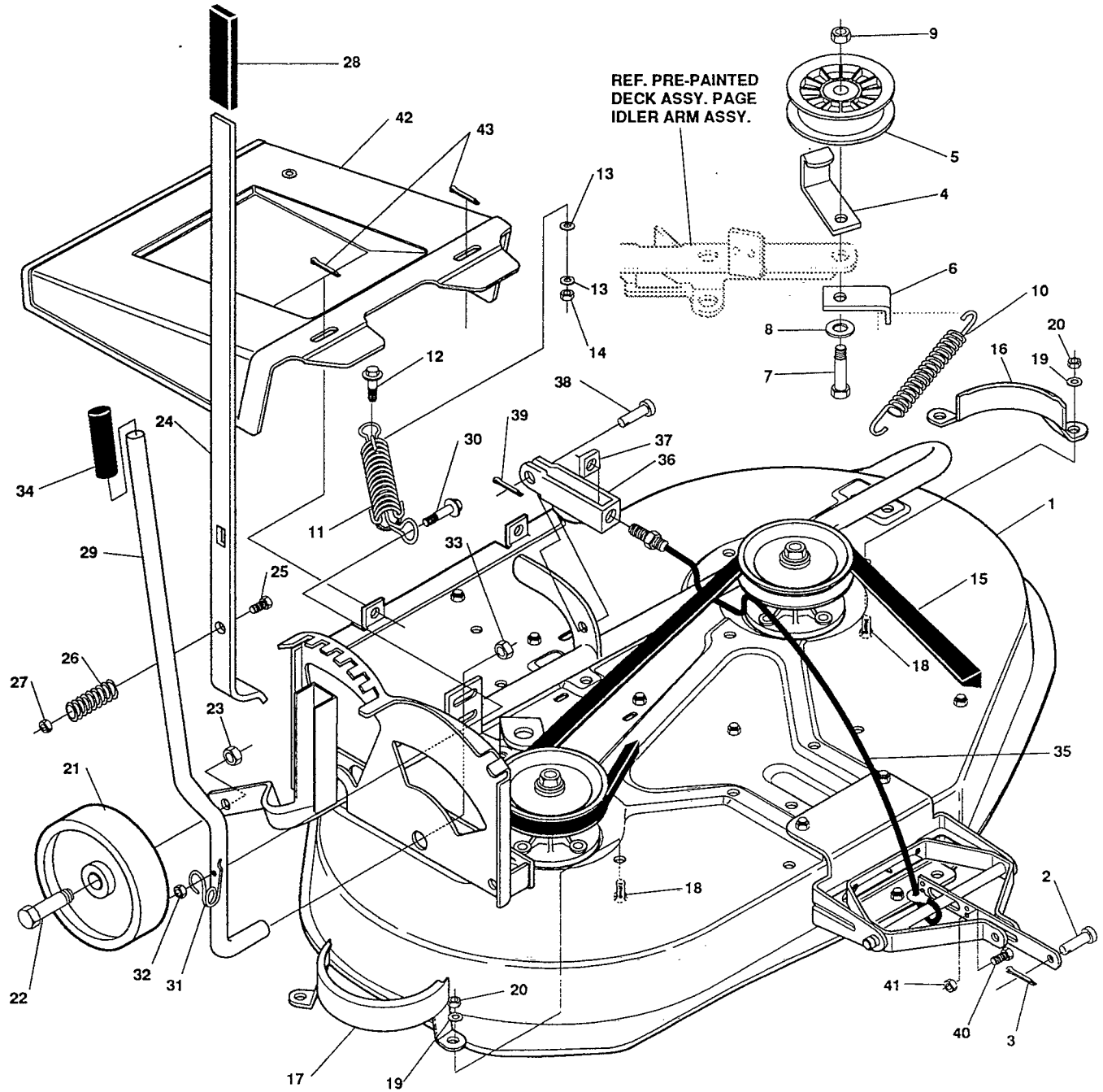
36" LAWN TRACTOR MODEL C3554-210

Key#	Part#	Description	Qty.
1	55663	DECK, 36WH RD MOWER	1
2	55655	BAFFLE, 36RD LH DECK	1
3	◇120228	SCREW, 5/16-18X .63 HHC	6
4	◇1498	NUT, 5/16-18 REGHEXCTRLK	6
5	52613	ASSY, TORQUE TUBE	1
6	51985	SUPPORT, PIVOT TUBE	1
7	◇120834	SCREW, 5/16-18X .50 HHC	1
8	◇1498	NUT, 5/16-18 REGHEXCTRLK	1
9	53247	QUADRANT	1
10	◇120834	SCREW, 5/16-18X .50 HHC	2
11	◇1498	NUT, 5/16-18 REGHEXCTRLK	2
12	57514	BRACKET, IDLER	1
13	◇120228	SCREW, 5/16-18X .63 HHC	2
14	◇1498	NUT, 5/16-18 REGHEXCTRLK	2
15	56424	QUILL ASSY, 36/39/40/43	2
16	56425	SHAFT/SADDLE 36"	1
17	49562	BRNG, BALL	1
18	50616	DUST SHIELD	1
19	55547	QUILL CASTING	1
20	49562	BRNG, BALL	1
21	50818	SPACER, 3.797LGX.669IDX.88	1
22	51449	SPACER, .438LGX.932ODX.672	1
23	56390	PULLEY, 26/36" QUILL	1
24	56365	SPECIAL WASHER	1
25	◇1282	NUT, 7/16-20 WDFLLK	1
26	◇50634	SCREW, 5/16-18X .88 WAHHTAP	7
27	◇300345	SCREW, 5/16-18X1.38 WATAP	1
28	◇1498	NUT, 5/16-18 REGHEXCTRLK	1
29	48676	LIFT PLATE	1
30	◇122007	SCREW, 5/16-18X .75 HHC	2
31	996416	WASHER, FLAT .391X1.00X.125	4
32	◇1498	NUT, 5/16-18 REGHEXCTRLK	2
33	◇120228	SCREW, 5/16-18X .63 HHC	2
34	◇1498	NUT, 5/16-18 REGHEXCTRLK	2
35	◇122017	SCREW, 5/16-18X1.00 HHC	1
36	996416	WASHER, FLAT .391X1.00X.125	1
37	◇1498	NUT, 5/16-18 REGHEXCTRLK	1
38	50613	BRACKET, PIVOT	1
39	49059	BAR, HITCH	1
40	49058	BRACKET, LOCK	1
41	◇120918	SCREW, 3/8-16X1.50 HHC	1
42	◇1499	NUT, 3/8-16 REGHXCTRLK	1
43	55724	PIN, PIVOT ROD .50DX7.55	1
44	996425	WASHER, FLAT .515X .88X.064	2
45	20864	RING, RET E .39X.04TRU5133-50	2
46	50824 306931	BLADE, 36" STD-LIFT 18	2
47	2483	WASHER, .39IDX1.25DX.07 BELLVIL	6
48	◇39573	SCREW, 3/8-24X1.00 NYLHHC	2
49	311427	IDLER ASSY, PIVOT ARM	1
50	311425-853	PIVOT ARM IDLER	1
51	306973	BRAKE PAD-HARD-232 AF	1
52	41601	RIVET, OVSET .187 DIA X .50 LG	2
53	47516	BOLT, .500 1.950 HHSH 3/8-16	1
54	996416	WASHER, FLAT .391 X 1.00 X .125	1
55	1499	NUT, 3/8-16 REGHXCTRLK	1

◇ Indicates STANDARD HARDWARE ITEMS.

36" LAWN TRACTOR MODEL C3554-210

FINAL DECK ASSEMBLY



REF. PRE-PAINTED
DECK ASSY. PAGE
IDLER ARM ASSY.

NOTE: ALWAYS USE ORIGINAL EQUIPMENT PARTS.
Use of service/replacement parts other than original equip-
ment parts may void your warranty.

**ALL UNNUMBERED
ITEMS ARE INTERCHANGABLE
WITH OPPOSITE SIDE**

316836C

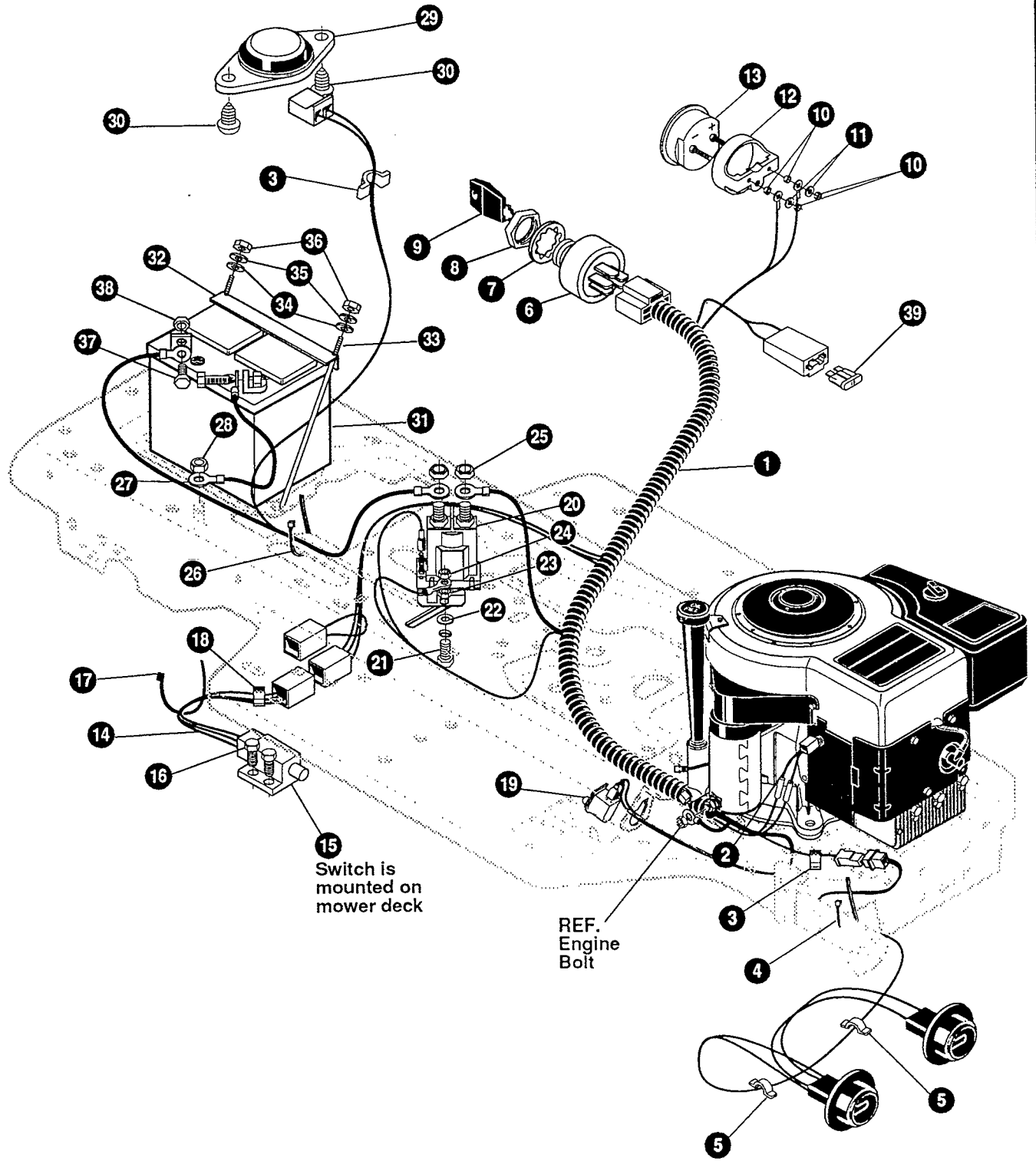
36" LAWN TRACTOR MODEL C3554-210

Key#	Part#	Description	Qty.
1	*	PAINTED DECK NOTE: SEE DWG #316030 FOR PARTS ASSEMBLY	
2	47816	PIN, .495X1.750 CLEVIS-SHORT	1
3	56180	PIN, HAIR, .091 DIA X 1.62LG	1
4	52695-953	RETAINER BELT	1
5	303028	PULLEY, IDLER BFF 3.13 DIA	1
6	57217-853	BRACKET, L-SHAPED BRAKE ROD	1
7	◇ 122168	SCREW, 3/8-16X1.75 HHC	1
8	◇ 446363	WASHER, FLAT .375X .88X.082	1
9	◇ 1499	NUT, 3/8-16 REGHXCTRLK	1
10	35410	SPRING .071 X .62 X 4.37	1
11	52636	SPRING	1
12	46563	BOLT, .375X .250 SHWA 1/4-20	1
13	◇ 120392	WASHER, FLAT .281X .63X.065	2
14	◇ 1502	NUT, 1/4-20 REGHEXCTRLK	1
15	308701	BELT, V 5L 80.00 DECK 36RD EXP	1
16	46365-853	COVER QUILL LH	1
17	46364-853	COVER, QUILL RH	1
18	◇ 120228	SCREW, 5/16-18X1.00 HHC	4
19	◇ 120393	WASHER, FLAT .344X .69X.065	4
20	◇ 1498	NUT, 5/16-18 REGHEXCTRLK	4
21	302611	WHEEL, SD 6.00ODX1.38WD	2
22	23763	BOLT, .500X1.390 HSH 3/8-16	2
23	◇ 1499	NUT, 3/8-16 REGHXCTRLK	2
24	50027-953	LEVER, HEIGHT ADJ	1
25	◇ 120696	SCREW, 5/16-18X2.25 HHC	1
26	53246	SPRING	1
27	◇ 1498	NUT, 5/16-18 REGHEXCTRLK	1
28	20250	GRIP, HAND .75X4.87	1
29	305383 315970	LEVER, BLADE ENGAGE 32RD&36RD 300910	1
30	1289	BOLT, .375X .250 SHWA 1/4-20	1
31	46561	SPRING, TORSION 36RD,32RD	1
32	◇ 1502	NUT, 1/4-20 REGHEXCTRLK	1
33	53697	NUT, 1/2 PUSHON	1
34	46478	GRIP, HAND .50ID 3.37LG BLK	1
35	300341	CABLE, LIFT 21.70 F-5 20X8-8	1
36	300703-953	CLEVIS, LIFT CABLE	1
37	◇ 120372	NUT, 1/4-20 REGSQ	1
38	39522	PIN, CLEVIS .312 X .812	1
39	56180	PIN, HAIR .091 DIA X 1.62LG	1
40	◇ 120228	SCREW, 5/16-18X .63 HHC	1
41	◇ 1498	NUT, 5/16-18 REGHEXCTRLK	1
42	50993	CHUTE EXTENSION PLASTIC 36"RD	1
43	120123	PIN, COTTER .125 DIA X 1.25LG	2

◇ Indicates STANDARD HARDWARE ITEMS.
* ORDER INDIVIDUAL PARTS.

36" LAWN TRACTOR MODEL C3554-210

ELECTRICAL ASSEMBLY



NOTE: ALWAYS USE ORIGINAL EQUIPMENT PARTS. Use of service/replacement parts other than original equipment parts may void your warranty.

ALL UNNUMBERED ITEMS ARE INTERCHANGABLE WITH OPPOSITE SIDE

323173C

36" LAWN TRACTOR MODEL C3554-210

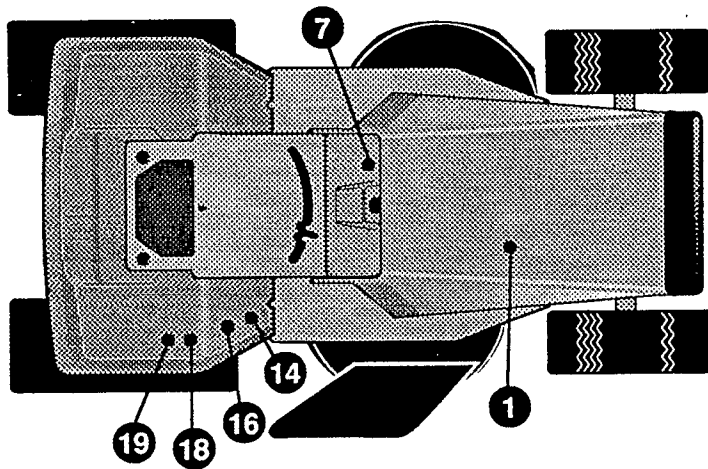
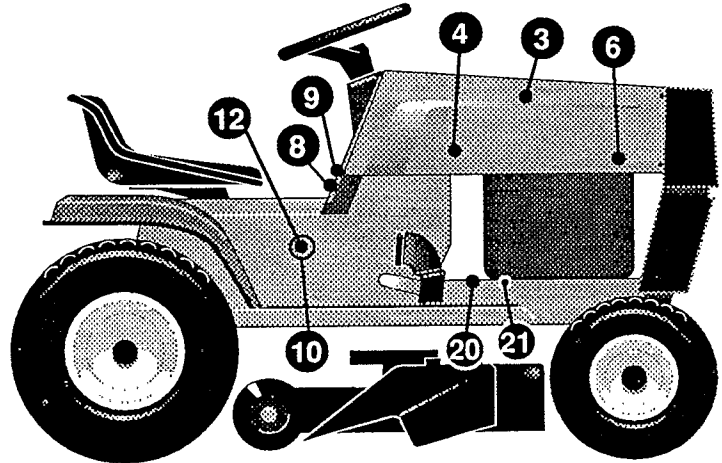
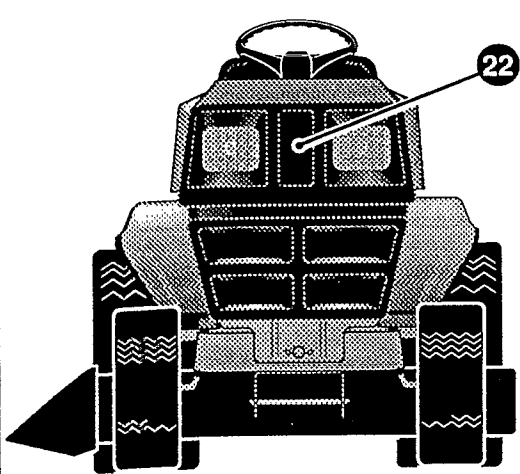
Key#	Part#	Description	Qty.
1.	57643	WIRE HARNESS, SF 8-12B&S	1
2.	321965	JUMPER GROUND LEAD FOR B & S	1
3.	41482	PRESS CLIP, 1.380LG .255ID	2
4.	57444	TIE, CABLE BLACK NYLON 5.62L	1
5.	41482	PRESS CLIP, 1.380LG .255ID	2
6.	300687	SWITCH, IGNITION & LIGHTS	1
7.	138557	WASHER, REGINTLK.640X1.1X.05	1
8.	• 48140	NUT, 5/8-32 HXHD IGN SWIT	1
9.	49643	2 KEYS & RING, ASSY BLANK	1
10.	112432	NUT, #10-32 REGHEX	4
11.	121685	WASHER, REGSPTLK	2
12.	309373	BRACKET, AMMETER	1
13.	309374 39463	AMMETER, ROUND	1
14.	57588	HARNESS DECK WIRE	1
15.	• 57476	SWITCH, SCR MNT DP	1
16.	57220	SCREW, #12 X .50 PHPNHTAP	2
17.	57444	TIE, CABLE BLACK NYLON 5.62L	1
18.	41482	PRESS CLIP, 1.380LG .255ID	2
19.	300220	SWITCH, SNAPMNT NO .055/.116BLK	1
20.	53716	SOLENOID	1
21.	• 187745	SCREW, 1/4-20X .75 HXSEMMA	2
22.	1084	WASHER, FLAT .281X1.00X.063	1
23.	• 1502	NUT, 1/4-20 REGHEXCTRLK	2
24.	• 271172	NUT, 1/4-20 REGHEXKEPS	1
25.	• 271187	NUT, 5/16-24 HKEPS	2
26.	57444	TIE, CABLE BLACK NYLON 5.62L	1
27.	55511	WIRE, GROUND, 12.5"	1
28.	• 271184	NUT, 5/16-18 HEXKEPS	1
29.	57547	SWITCH, SEAT	1
30.	• 160505	SCREW, 1/4-20X .38PHPNHMAGR2	2
31.	57486	BATTERY, YUASA 12V 5-PLATE	1
32.	56360-954	BATTERY BRACKET	1
33.	40234	BATTERY ROD	2
34.	120392	WASHER, FLAT .281X .63X.065	2
35.	120380	WASHER, REGSPTLK.263X.49X.07	2
36.	• 120375	NUT, 1/4-20 REGHEX	2
37.	• 120854	SCREW, 1/4-20X .63 HHC	2
38.	• 271172	NUT, 1/4-20 REGHEXKEPS	2
39.	••302031	FUSE, 15 AMP SPAPE TYPE	1

• INDICATES STANDARD HARDWARE ITEMS

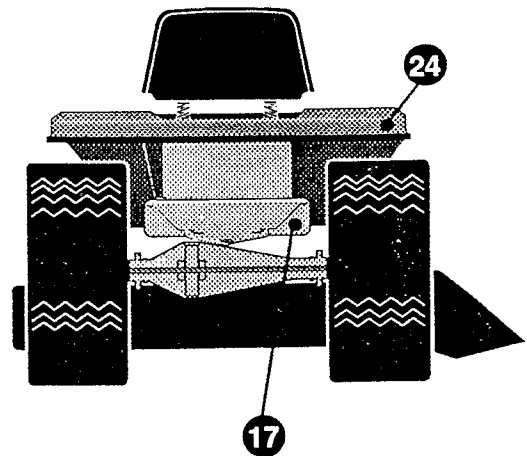
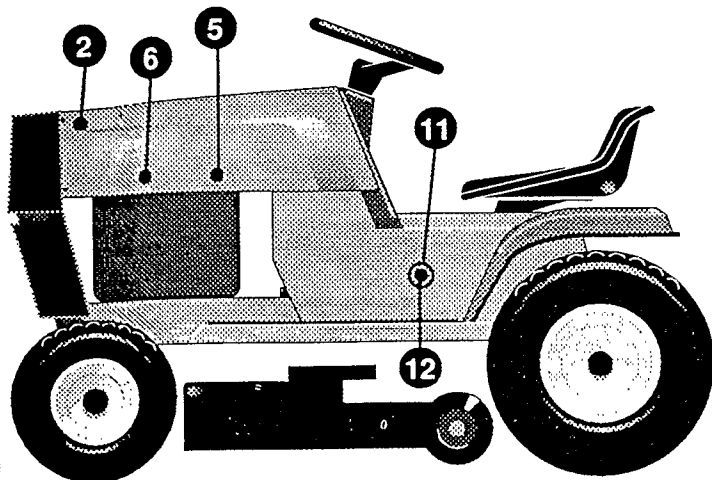
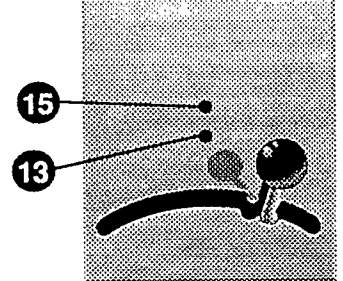
••Spade type fuse included with the wire harness.

36" LAWN TRACTOR MODEL C3554-210

DECALS



CONSOLE DETAIL

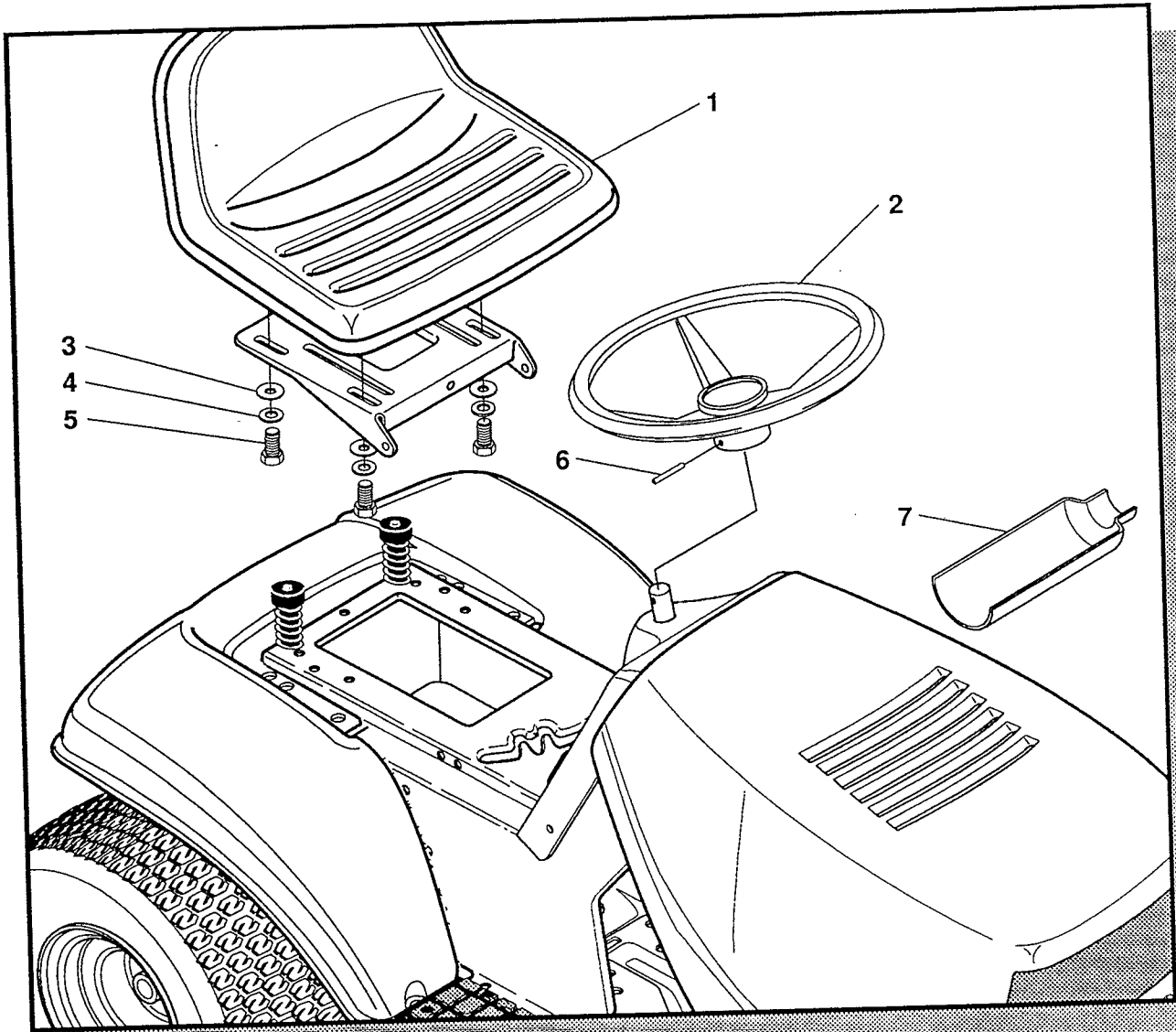


36" LAWN TRACTOR MODEL C3554-210

Key#	Part#	Description	Qty.
1.	55832	PAD, FOAM TOP HOOD	1
2.	55833	PAD, FOAM HOOD SIDE LH	1
3.	55834	PAD, FOAM HOOD SIDE RH	1
4.	70684	DECAL, HOOD STRIP RH	1
5.	70685	DECAL, HOOD STRIP LH	1
6.	301041	NAMEPLATE, WESTERN WHITE	2
7.	69638	DECAL, DASH UPPER SF W/ANM	1
8.	320721	DECAL, DASH PLAIN EXPORT	1
9.	308692	DECAL, INSTRUCTION	1
10.	70682	DECAL, RIDER CONSOLE SF STRIP RH	1
11.	70683	DECAL, RIDER CONSOLE SF STRIP LH	1
12.	300558	NAMEPLATE, 11/36 WHITE	2
13.	301104	DECAL, CONSOLE TOP SHIFT 5-SP	1
14.	305770	DECAL, CAUTION TRIANGLE, EUROPE	1
15.	307376	DECAL, INSTRUCTION DANISH	1
16.	307377	DECAL, WARNING DANISH	1
17.	68542	DECAL, CAUTION HAND/FOOT	1
18.	68900	DECAL, BLADE ENGAGE, EUROPE	1
19.	68901	DECAL, BLADE HEIGHT ADJ. EUROPE	1
20.	68903	DECAL, BRAKE/CLUTCH, EUROPE	1
21.	67667	DECAL, CHECK OIL LEVEL	1
22.	70686	DECAL, G-8 GRILLE COVER	1
23.		REFERENCE ONLY	
24.	307540	NAMEPLATE, WESTERN SMALL WHITE	1
25.		REFERENCE ONLY	

36" LAWN TRACTOR MODEL C3554-210

CUSTOMER ASSEMBLY

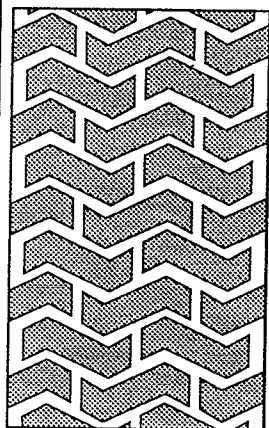


CUSTOMER ASSEMBLY VIEW

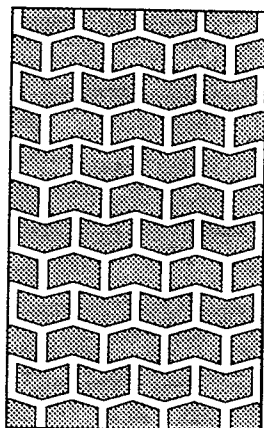
315108 PARTS BAG ASSY QTY1

Key#	Part#	Description	Qty
1	57452	SEAT, MV350	1
2	301251	STEERING WHEEL	1
3	120393	WASHER, FLAT .344X.69X.065	4
4	120638	WASHER, HVSP LTK .328X.60X.109	4
5	122007	SCREW, 5/16-18X.75 HHC	4
6	456378	ROLL PIN .250 DIA X 2.0 LG	1
7	54873	OIL TROUGH	1

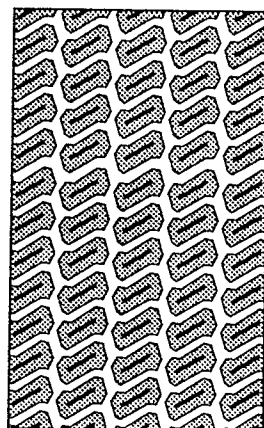
TREAD PATTERNS



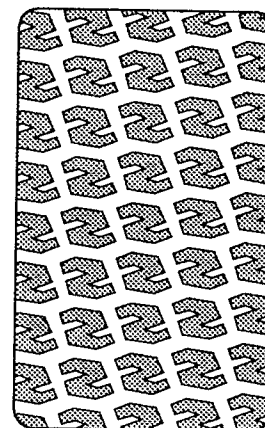
"A"



"B"



"C"



"D"

TIRE SIZE	"A"	"B"	"C"	"D"
11 X 4.00 - 5	42295	319679		
13 X 5.00 - 6	41060	319680		
15 X 6.00 - 6	39830	316702	301140	313952
16 X 6.50 - 8	41081	319682		314539
18 X 8.50 - 8	319683	317400		
18 X 9.50 - 8	41106	316701		313950
20 X 8.00 - 8	319685	319684	57164	314584
20 X 10.00 - 8	58276	319686		313654
20 X 10.00 - 10	55893	319687		
23 X 9.50 - 12	53655	319690	319689	314370