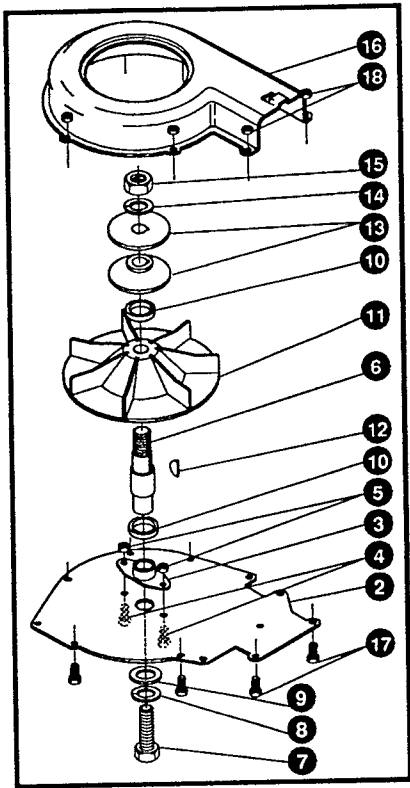
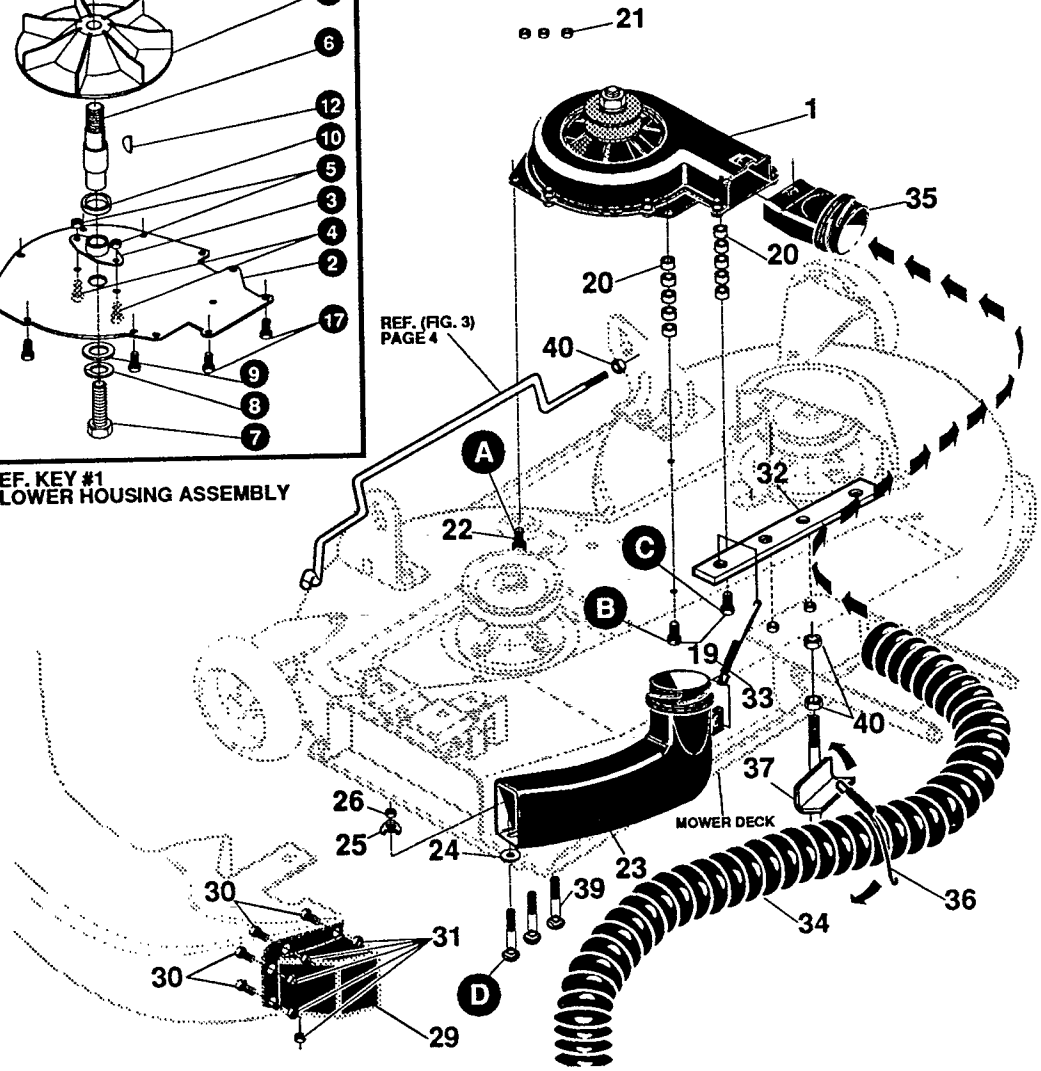


5709-1000 ISJK 1995

REPAIR PARTS



REF. KEY #1
BLOWER HOUSING ASSEMBLY



REF. (FIG. 3)
PAGE 4

	#1 38"/39" DECK	38"/39" # OF SPACERS	#2 40" DECK	40" # OF SPACERS	#3 42"/43" DECK	42"/43" # OF SPACERS
SCREW "A"	120706 - 1/4-20 X .50	0	180021 - 1/4-20 X .80	2	180021 - 1/4-20 X .80	2
SCREW "B"	180021 - 1/4-20 X .80	2	180037 - 1/4-20 X 1.63	5	180037 - 1/4-20 X 1.63	6
SCREW "C"	180021 - 1/4-20 X .80	2	180037 - 1/4-20 X 1.63	3	180037 - 1/4-20 X 1.63	5
SCREW "D"	120230 - 5/16-18 X 1.25	0	12685 - 5/16-18 X 1.50	0	12685 - 5/16-18 X 1.50	0

REPAIR PARTS

KEY#	PART#	DESCRIPTION	qty.
1.	323883	ASM. BLOWER, AIR-ASSIST	1
2.	316401	MP LOWER PLATE BLOWER	1
3.	317135	FLANGED BEARING	1
4.	120854	SCREW, 1/4-20X .63 HHC GR2	2
5.	1502	NUT, 1/4-20 REGHEXCTRLK	2
6.	314770	SHAFT, BLOWER AIR ASSIST	1
7.	181596	SCREW, 5/16-24X .88 HHC GR5	1
8.	120638	WASHER, HVSP TLK .328X.60X.09	1
9.	45602	WASHER, FLAT .333X .87X.119	1
10.	314929	SPACER, SLEV .834X .23X1.00	2
11.	313761	IMPELLER, AIR ASSIST	1
12.	35075	KEY, HI-PRO 404 .50DIA X.125WD	1
13.	313774	PULLEY, 5L PUMP(AIR ASSIST)	2
14.	120384	WASHER, REGSPTLK.523X.87X.14	1
15.	120371	NUT, 1/2-20 HEX	1
16.	316402	MP IMPELLER HOUSING BLOWER	1
17.	443874	SCREW, 10-24X .50 HHMA GR2	7
18.	312300	NUT, #10-24 REGHEXCTRLK	7
19.	180021	SCREW, 1/4-20X .88 HHC GR5Z	2
20.	3943	SPACER, SLEV .250X .47X .20	13
21.	1502	NUT, 1/4-20 REGHEXCTRLK	3
22.	120706	SCREW, 1/4-20X .50 HHC GR2	1
23.	327852	AIR DUCT AIR ASSIST	1
24.	996407	WASHER, FLAT .328X .75X.077	1
25.	321510	WASHER, PENETRATING .32X.68X.09	1
26.	1498	NUT, 5/16-18 REGHEXCTRLK	1
29.	316421	INLET, CHUTE AIR-ASSIST	1
29A	316987	INLET, CHUTE AIR ASSIST	1
30.	318377	SCREW, 10-32X .50 SLWAHH BLKX	5
31.	314159	NUT, #10-32 CTRLK BLKX	5
32.	328155	PLATE MOUNTING	1
33.	328196	SPRING TENSION AIR ASSIST	1
34.	332601	FLEX HOSE	1
35.	327851	AIR DUCT AIR ASSIST	1
36.	328659	SPRING-LATCH AIR ASSIST FLEX	1
37.	327894	ASSEMBLY - UP STOP	1
38.	315306	BRAKE ROD - 38/39	1
	315396	BRAKE ROD - 40	1
	315304	BRAKE ROD - 42/43	1
39.	180073	SCREW, 5/16-18 X .50	2
40.	1499	NUT, 3/8-16 REGHEXCTRLK	2