

OWNER'S MANUAL

32" - 11 H.P. RIDING MOWER

Rod
20th

MODEL 3595-10

WARRANTY

ONE YEAR LIMITED WARRANTY

For one (1) year from date of purchase by the first consumer for residential use (thirty (30) days commercial use), Western International Incorporated warrants that it will replace free of charge, including labor, any original part of any Western International Incorporated product found to be defective by any authorized Service Dealer or the factory, except the battery which is warranted for ninety (90) days from date of purchase.

This warranty does not cover engine, transmission, transaxle or differential (these items are covered by their manufacturer's own warranty). This warranty does not cover parts that have failed due to normal wear or parts that have failed subject to misuse or abuse. Transportation of the unit or part to and from an authorized Service Dealer or the factory is the responsibility of the owner.

A step by step explanation as to what procedure should be followed for this Warranty is:

1. If a part becomes defective, contact the store where the unit was purchased for the name and address of the authorized Service Dealer nearest to you.
2. If you cannot locate an authorized Service Dealer, write Service Department of Western International Incorporated for the name and address of the authorized Service Dealer in your area or call the Service Department at 1-800-247-7464 (outside Iowa), 1-515-265-3461 (Iowa).
3. Return the defective product, along with proof of purchase to such authorized Service Dealer for replacement of any defective part where covered by this warranty.

There is no other express warranty. Implied warranties, including those of merchantability and fitness for a particular purpose are limited to one (1) year from date of purchase. Liability for incidental or consequential damages are excluded.

Some states do not allow limitations on how long an implied warranty lasts, so the above limitation may not apply to you. Some states do not allow the exclusion of incidental or consequential damages, so the above exclusion may not apply to you. This warranty gives you specific legal rights, and you may have other rights which vary from state to state.

Western International Incorporated

P.O. Box 377

Des Moines, Iowa 50302

UNIT PARTS AND SERVICE

This manual contains instructions for safety, assembly and maintenance. Read this manual carefully and completely so that you will know proper assembly, use and care of your unit. Also fill in and mail the registration card packed with the unit. For service other than covered in this manual, contact an authorized service dealer. A nationwide parts and service organization has been established to provide locally available parts and service. A list of authorized parts distributors has been included in this manual. When ordering repair parts, always give the following information: 1. The Part Name; 2. The Part Number; 3. The Quantity desired; 4. The Full (eight digit) Model Number of the unit. The model number will be found on a plate attached to the unit.



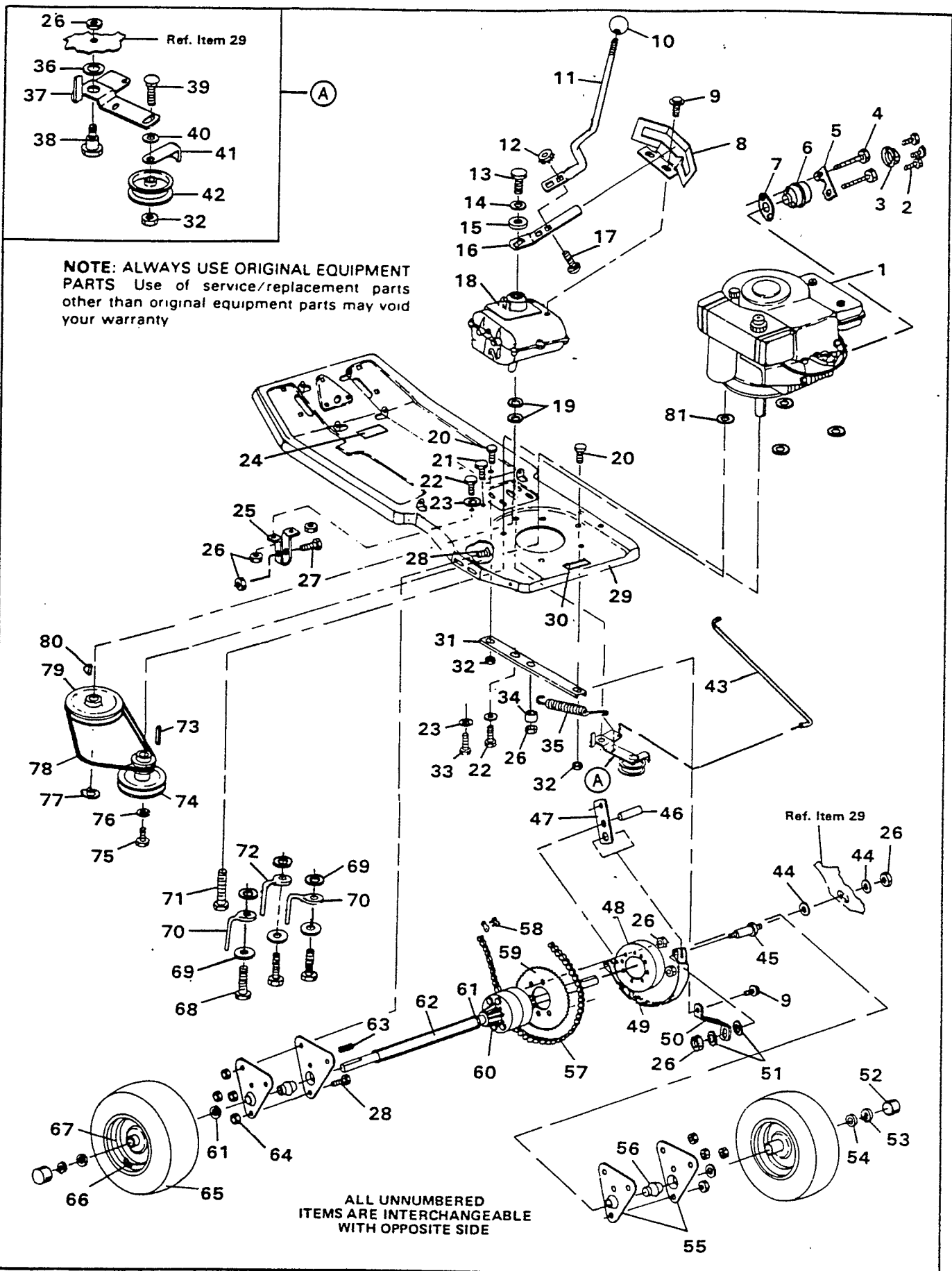
Look for this symbol. It means - ATTENTION! BECOME ALERT! A HAZARD TO OPERATOR, BYSTANDERS, PROPERTY OR EQUIPMENT MAY EXIST.

WESTERN INTERNATIONAL INCORPORATED
P.O. BOX 377
DES MOINES, IOWA 50302

Part No. 62965

3886

32" RIDING MOWER MODEL 3595-10



NOTE: ALWAYS USE ORIGINAL EQUIPMENT PARTS Use of service/replacement parts other than original equipment parts may void your warranty

ALL UNNUMBERED ITEMS ARE INTERCHANGEABLE WITH OPPOSITE SIDE

REPAIR PARTS

32" RIDING MOWER MODEL 3595-10

ALWAYS GIVE THE FOLLOWING INFORMATION WHEN ORDERING REPAIR PARTS:

1. The PART NUMBER; 2. The PART NAME; 3. QUANTITY DESIRED; 4. The MODEL NUMBER (As shown on Model Plate)
SEND PART ORDERS AS PER INSTRUCTIONS ON THE FRONT PAGE

YOUR UNIT IS RIGHT HAND (RH) OR LEFT HAND (LH) AS YOU STAND BEHIND IT.

DO NOT USE KEY NUMBERS WHEN ORDERING REPAIR PARTS, ALWAYS USE PART NUMBERS.

All replacement parts will be supplied in current production colors or in a neutral color.

A handling fee is applicable to small parts orders.

| Key No. | Part No. | Description |
|---------|--------------|----------------------------------|
| 1 | Engine | §See Footnote Below |
| 2 | 35287 | Screw, Taptite, No. 8-32 x ¾ In. |
| 3 | 56472 | Deflector, Muffler |
| 4 | 173063 | *Screw, Hex Hd, 5/16-18 x 3½ In. |
| 5 | | Engine Part |
| 6 | 54766 | Muffler |
| 7 | | Gasket, Muffler (Engine Part) |
| 8 | 55453 | Quadrant |
| 9 | 35497 | Screw, Taptite, 5/16-18 x ½ In. |
| 10 | 42860 | Knob, Shift Lever |
| 11 | 55443 | Lever, Shift |
| 12 | 271172 | Nut, Keps, ¼-20 Thd. |
| 13 | 54686 | Screw, Nylock, ¼-28 x ¾ In. |
| 14 | 9421393 | *Flatwasher, 9/32 In. |
| 15 | 50618 | Spacer |
| 16 | 55446 | Plate, Spring |
| 17 | 126203 | Carriage Bolt, ¼-20 x ¾ In. |
| 18 | Transmission | †Peerless, Model 752 |
| 19 | 2968 | Flatwasher, ½ In. |
| 20 | 122119 | *Screw, Hex Hd, ¾-16 x ¾ In. |
| 21 | 120228 | Screw, Hex Hd, 5/16-18 x ¾ In. |
| 22 | 122017 | Screw, Hex Hd, 5/16-18 x 1 In. |
| 23 | 138485 | Washer, Shakeproof, 5/16 In. |
| 24 | 70117 | Decal, Caution |
| 25 | 55451 | Guide, Mower Deck |
| 26 | 9413447 | Locknut, 5/16-18 Thd. |
| 27 | 122027 | *Screw, Hex Hd, 5/16-18 x 1¼ In. |
| 28 | 126211 | *Carriage Bolt, 5/16-18 x ¾ In. |
| 29 | 55465 | Main Frame |
| 30 | 70161 | Decal, Caution |
| 31 | 55464 | Channel, Stiffener |
| 32 | 9413534 | Locknut, ¾-16 Thd. |
| 33 | 122007 | *Screw, Hex Hd, 5/16-18 x ¾ In. |
| 34 | 21882 | Spacer |
| 35 | 35410 | Spring, Idler |
| 36 | 48253 | Flatwasher, ¾ In. |
| 37 | 55467 | Arm, Idler |
| 38 | 41890 | Shoulder Bolt |
| 39 | 45892 | Carriage Bolt, ¾-16 x 1½ In. |
| 40 | 274517 | *Flatwasher, 13/32 In. |
| 41 | 39659 | Retainer, Belt |

| Key No. | Part No. | Description |
|---------|----------|-----------------------------------|
| 42 | 35374 | Pulley, Idler |
| 43 | 55461 | Clutch Rod |
| 44 | 120386 | *Flatwasher, 5/16 In. |
| 45 | 55447 | Pin, Brake Anchor |
| 46 | 456713 | Roll Pin |
| 47 | 55448 | Brake Arm |
| 48 | 54952 | Drum, Brake |
| 49 | 55449 | Band, Brake |
| 50 | 55463 | Brace, Brake Pin |
| 51 | 22963 | Washer, Spring |
| 52 | 40394 | Hub Cap, Rear |
| 53 | 36625 | Retaining Ring |
| 54 | 42815 | Flatwasher, ¾ In. |
| 55 | 47596 | Bracket, Bearing Retaining |
| 56 | 35345 | Bearing, Self-Aligning |
| 57 | 55491 | Chain Assembly |
| 58 | 20307 | Link, Connector |
| 59 | 55456 | Sprocket, 45 Tooth |
| 60 | 55458 | Differential |
| 61 | 642 | Flatwasher, ¾ In. |
| 62 | 52823 | Spacer, Differential |
| 63 | 39628 | Key, Square, 3/16 x 3/16 x 2½ In. |
| 64 | 271184 | *Nut, Keps, 5/16-18 Thd. |
| 65 | 41081 | Tire, Rear |
| 66 | 24167 | Valve Stem |
| 67 | 36182 | Wheel, Rear |
| 68 | 35325 | Screw, Taptite, ¾-16 x 2 In. |
| 69 | 120394 | *Flatwasher, 13/32 In. |
| 70 | 55480 | Belt Guide |
| 71 | 48148 | Screw, Taptite, ¾-16 x 1 In. |
| 72 | 55488 | Belt Guide |
| 73 | 33200 | Key, Square, ¼ x ¼ x 1½ In. |
| 74 | 53194 | Pulley, Engine |
| 75 | 123567 | *Screw, Hex Hd, 7/16-20 x 1 In. |
| 76 | 120383 | *Lockwasher, Split, 7/16 In. |
| 77 | 22053 | Retaining Ring |
| 78 | 55450 | V-Belt |
| 79 | 55455 | Pulley, Transmission |
| 80 | 3021 | Key, Woodruff No. 606 |
| 81 | 996416 | Flatwasher |
| 82 | 62965 | Owner's Manual (Not illustrated) |

Standard Hardware Items - May Be Purchased Locally.

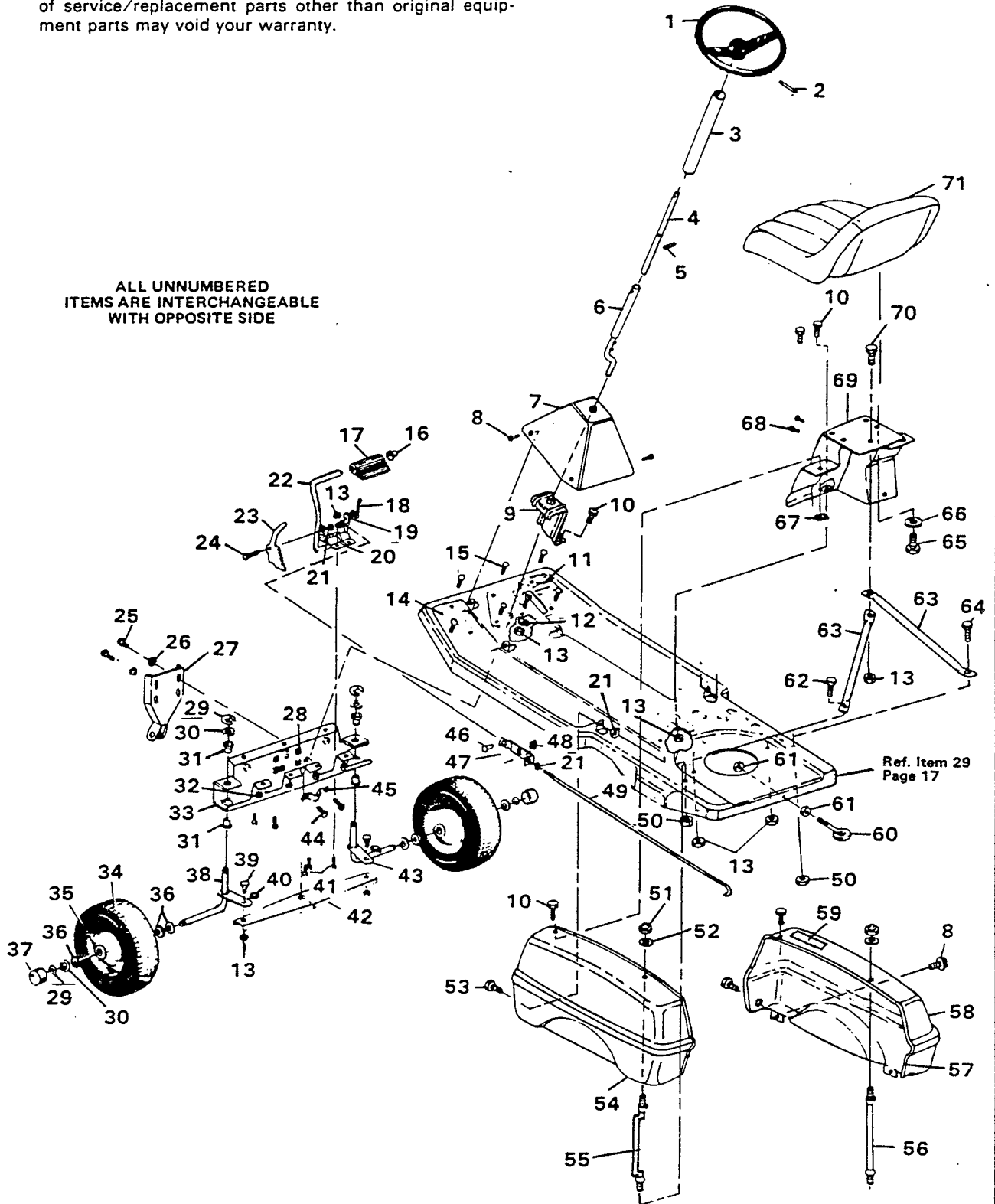
Contact Tecumseh/Peerless authorized service dealer for parts and warranty.

Contact Engine Manufacturer's authorized service dealer (See Engine Manual) for parts and warranty.

32" RIDING MOWER MODEL 3595-10

NOTE: ALWAYS USE ORIGINAL EQUIPMENT PARTS. Use of service/replacement parts other than original equipment parts may void your warranty.

ALL UNNUMBERED ITEMS ARE INTERCHANGEABLE WITH OPPOSITE SIDE



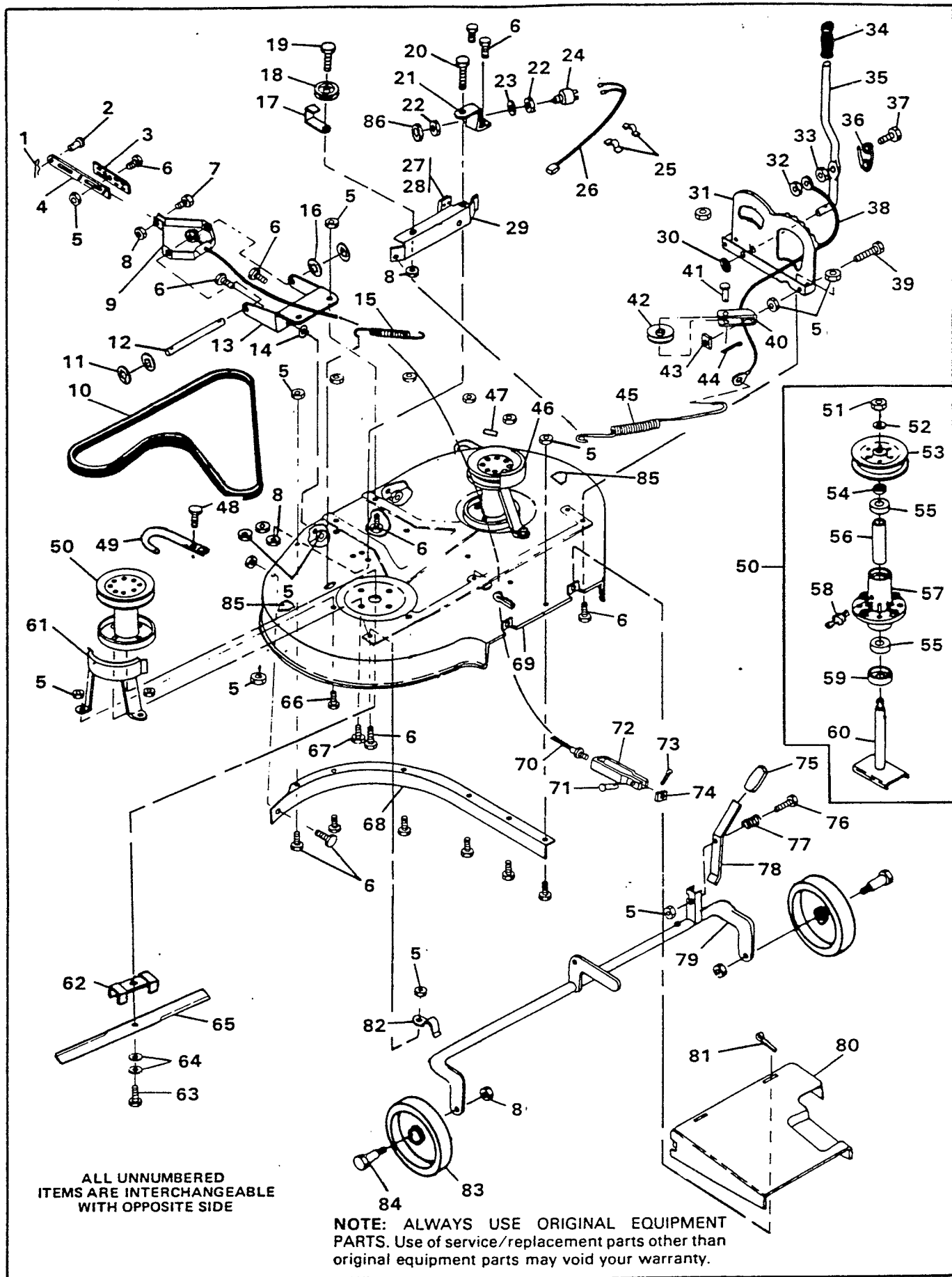
32" RIDING MOWER MODEL 3595-10

| Key No. | Part No. | Description |
|---------|----------|------------------------------------|
| 1 | 52955 | Wheel, Steering |
| 2 | 456836 | Roll Pin, 1/4 x 2 1/4 In. |
| 3 | 51858 | Tube, Steering, Decorative |
| 4 | 52952 | Shaft, Steering |
| 5 | 9417375 | Pin, Spiral, 3/16 x 1 1/4 In. |
| 6 | 52953 | Shaft, Steering |
| 7 | 55454 | Console Assembly |
| 8 | 995346 | Screw, Taptite, 1/4-20 x 1/2 In. |
| 9 | 55445 | Support, Steering |
| 10 | 48901 | Screw, Hex Hd, 5/16-18 x 5/8 In. |
| 11 | 55490 | Pad, Footrest, R.H. |
| 12 | 120386 | Flatwasher, 5/16 In. |
| 13 | 9413447 | Locknut, 5/16-18 Thd. |
| 14 | 55489 | Pad, Footrest, L.H. |
| 15 | 126211 | *Carriage Bolt, 5/16-18 x 5/8 In. |
| 16 | 44582 | Nut, Push, 7/16 In. |
| 17 | 52840 | Pad, Clutch/Brake Pedal |
| 18 | 8260 | Hairpin Cotter |
| 19 | 120393 | *Flatwasher, 11/32 In. |
| 20 | 44112 | Bracket, Clutch/Brake |
| 21 | 9424215 | Locknut, 1/4-20 Thd. |
| 22 | 51833 | Lever Assembly, Clutch/Brake |
| 23 | 47601 | Lever, Parking Brake |
| 24 | 3275 | Shoulder Bolt |
| 25 | 122119 | *Screw, Hex Hd, 3/8-16 x 3/4 In. |
| 26 | 120394 | *Flatwasher, 13/32 In. |
| 27 | 47632 | Bracket, Deck Hanger |
| 28 | 9413534 | Locknut, 3/8-16 Thd. |
| 29 | 20859 | Retaining Ring |
| 30 | 4107 | Flatwasher, 5/8 In. |
| 31 | 44111 | Bearing, Flange |
| 32 | 45174 | Locknut, Wide Flange, 5/16-18 Thd. |
| 33 | 55466 | Axle Assembly, Front |
| 34 | 53618 | Wheel & Tire Assy. w/Bearing |
| 35 | 53619 | Bearing, Front Wheel |
| 36 | 40677 | Flatwasher, 5/8 In. |

| Key No. | Part No. | Description |
|---------|----------|-------------------------------------|
| 37 | 36832 | Hub Cap, Front |
| 38 | 47595 | Spindle, L.H. |
| 39 | 46511 | Shoulder Bolt |
| 40 | 3140 | Wave Washer |
| 41 | 120228 | *Screw, Hex Hd, 5/16-18 x 5/8 In. |
| 42 | 44151 | Link, Steering |
| 43 | 47594 | Spindle, R.H. |
| 44 | 35497 | Screw, Taptite, 5/16-18 x 1/2 In. |
| 45 | 51805 | "U" Bracket, Steering Shaft |
| 46 | 39522 | Pin, Clevis |
| 47 | 55460 | Bracket, Clutch Rod |
| 48 | 271172 | *Nut, Keps, 1/4-20 Thd. |
| 49 | 55462 | Brake Rod |
| 50 | 271184 | *Nut, Keps, 5/16-18 Thd. |
| 51 | 55623 | Nut, Acorn, 5/16-18 Thd. |
| 52 | 120393 | *Flatwasher, 11/32 In. |
| 53 | 48900 | Screw, Hex Hd, 1/4-20 x 1 In. |
| 54 | 55469 | Fender, L.H. |
| 55 | 55614 | Rod, Fender Support, L.H. |
| 56 | 56471 | Rod, Fender Support, R.H. |
| 57 | 55022 | Edging, Fender |
| 58 | 55468 | Fender, R.H. |
| 59 | 70101 | Decal, Shift Pattern |
| 60 | 44121 | Eye Bolt, 3/8-16 x 3 1/2 In. |
| 61 | 120377 | *Nut, Hex, 3/8-16 Thd. |
| 62 | 122007 | *Screw, Hex Hd, 5/16-18 x 3/4 In. |
| 63 | 52845 | Support, Seat |
| 64 | 122027 | *Screw, Hex Hd, 5/16-18 x 1 1/4 In. |
| 65 | 120834 | *Screw, Hex Hd, 5/16-18 x 1/2 In. |
| 66 | 120638 | *Lockwasher, Split, 5/16 In. |
| 67 | 44572 | Clip, Tinnerman, 5/16-18 Thd. |
| 68 | 35287 | Screw, Taptite, No. 8-32 x 3/8 In. |
| 69 | 52023 | Support, Seat |
| 70 | 122017 | *Screw, Hex Hd, 5/16 x 1 In. |
| 71 | 52656 | Seat |

*Standard Hardware Items - May Be Purchased Locally.

32" RIDING MOWER MODEL 3595-10



ALL UNNUMBERED
ITEMS ARE INTERCHANGEABLE
WITH OPPOSITE SIDE

NOTE: ALWAYS USE ORIGINAL EQUIPMENT
PARTS. Use of service/replacement parts other than
original equipment parts may void your warranty.

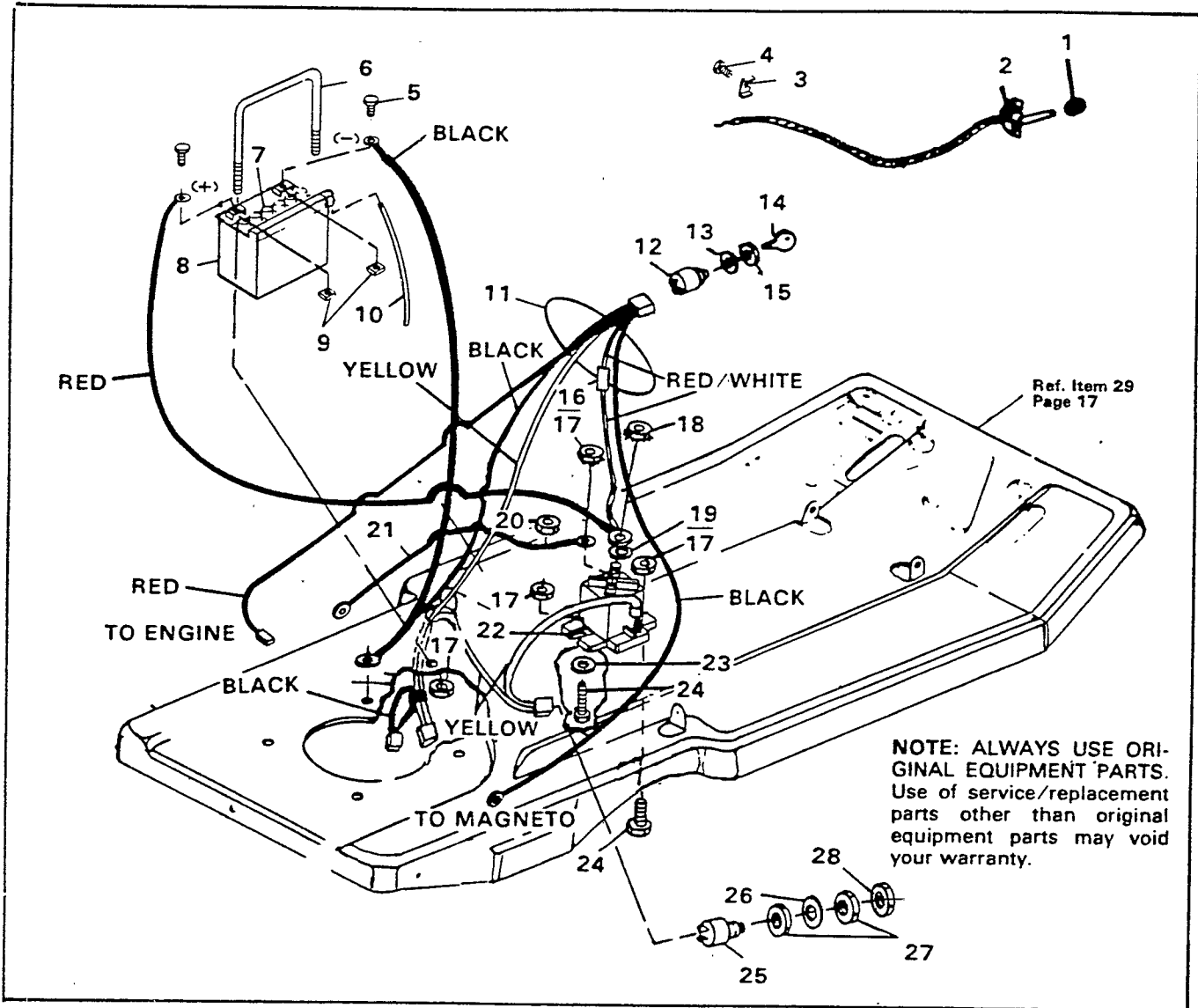
32" RIDING MOWER MODEL 3595-10

| Key No. | Part No. | Description |
|---------|----------|------------------------------------|
| 1 | 56180 | Hairpin Cotter |
| 2 | 47816 | Pin, Clevis |
| 3 | 49058 | Bracket, Bar Hitch Lock |
| 4 | 49059 | Bar, Hitch |
| 5 | 9413447 | Locknut, 5/16-18 Thd. |
| 6 | 120228 | *Screw, Hex Hd, 5/16-18 x 5/8 In. |
| 7 | 120918 | *Screw, Hex Hd, 3/8-16 x 1 1/2 In. |
| 8 | 9413534 | Locknut, 3/8-16 Thd. |
| 9 | 50613 | Bracket, Pivot |
| 10 | 47611 | V-Belt |
| 11 | 20864 | "E" Ring |
| 12 | 55724 | Pin, Pivot |
| 13 | 48676 | Plate, Lift Support |
| 14 | 996416 | *Flatwasher, 25/64 In. |
| 15 | 35410 | Spring, Idler |
| 16 | 996425 | *Flatwasher, 33/64 In. |
| 17 | 52695 | Belt Retainer |
| 18 | 52694 | Pulley, Idler |
| 19 | 122168 | *Screw, Hex Hd, 3/8-16 x 1 3/4 In. |
| 20 | 47516 | Shoulder Bolt |
| 21 | 47517 | Bracket, Idler Arm |
| 22 | 45877 | Nut, Safety Switch |
| 23 | 45878 | Lockwasher, Safety Switch |
| 24 | 41204 | Switch, Safety |
| 25 | 41482 | Wire Clip, Press |
| 26 | 43038 | Wire Assembly |
| 27 | 41601 | Rivet |
| 28 | 47791 | Brake Pad |
| 29 | 47592 | Idler Arm Assy. (Includes 27 & 28) |
| 30 | 53697 | Push Nut, 1/2 In. |
| 31 | 53247 | Quadrant |
| 32 | 9424215 | Locknut, 1/4-20 Thd. |
| 33 | 271172 | *Nut, Keps, 1/4-20 Thd. |
| 34 | 46478 | Grip, Clutch Lever |
| 35 | 53885 | Lever, Clutch |
| 36 | 46561 | Spring, Clutch Lever |
| 37 | 53901 | Screw, Special, 1/4-20 x 1 1/2 In. |
| 38 | 51875 | Cable, Clutch Spring |
| 39 | 50083 | Screw, Hex Hd, 5/16-18 x 3 1/2 In. |
| 40 | 52243 | Support, Cable Pulley |
| 41 | 49332 | Pin, Clevis |
| 42 | 39298 | Pulley, Cable |

*Standard Hardware Items - May Be Ordered Locally.

| Key No. | Part No. | Description |
|---------|----------|-------------------------------------|
| 43 | 120376 | Nut, Hex, 5/16-18 Thd. |
| 44 | 121222 | *Cotterpin, 3/32 x 3/4 In. |
| 45 | 51841 | Spring, Clutch |
| 46 | 47633 | Pulley Cover, R.H. |
| 47 | 67475 | Decal, Height Adjust |
| 48 | 122007 | *Screw, Hex Hd, 5/16-18 x 3/4 In. |
| 49 | 51921 | Skid, Deck |
| 50 | 56284 | Quill Assy. (Incl. No. 51-60) |
| 51 | 51445 | Locknut, Flange, 7/16-20 Thd. |
| 52 | 56365 | Washer, Special |
| 53 | 56391 | Pulley |
| 54 | 56280 | Spacer |
| 55 | 50697 | Bearing |
| 56 | 50818 | Spacer Tube |
| 57 | 50702 | Quill Casting |
| 58 | 706 | Grease Zerk |
| 59 | 50616 | Dust Shield |
| 60 | 56623 | Saddle & Shaft Assembly |
| 61 | 47353 | Pulley Cover, L.H. |
| 62 | 50002 | Spacer, Blade |
| 63 | 47665 | Screw, Hex Hd, 3/8-24 x 1 1/2 In. |
| 64 | 2483 | Washer, Spring |
| 65 | 56820 | Blade, 16 In. |
| 66 | 122017 | *Screw, Hex Hd, 5/16-18 x 1 In. |
| 67 | 50634 | Screw, Tapite, 5/16-18 x 7/8 In. |
| 68 | 47354 | Baffle, L.H. |
| 69 | 51948 | Mower Deck |
| 70 | 55880 | Lift Cable Assembly |
| 71 | 39522 | Pin, Clevis |
| 72 | 39404 | Clevis, Lift Cable |
| 73 | 8260 | Hairpin Cotter |
| 74 | 120372 | *Nut, Square, 1/4-20 Thd. |
| 75 | 20250 | Grip, Height Adjust Lever |
| 76 | 120696 | *Screw, Hex Hd, 5/16-18 x 2 1/4 In. |
| 77 | 53246 | Spring |
| 78 | 46358 | Lever, Height Adjust |
| 79 | 52612 | Pivot Tube Assembly |
| 80 | 54527 | Chute Extension |
| 81 | 120123 | *Cotterpin, 1/8 x 1 1/4 In. |
| 82 | 51985 | Support, Pivot Tube |
| 83 | 52584 | Wheel |
| 84 | 23763 | Axle, Wheel |
| 85 | 68547 | Decal, Danger |
| 86 | 56635 | Nut, Hex, 15/32-32 Thd. |

32" RIDING MOWER MODEL 3595-10



| Key No. | Part No. | Description |
|---------|----------|-------------------------------------|
| 1 | 39486 | Knob, Throttle Control |
| 2 | 52056 | Throttle Control |
| 3 | 27521 | Clip, Throttle Control |
| 4 | 995363 | *Screw, Hex Hd, No. 10-32 x 5/8 In. |
| 5 | 55529 | Screw, Special |
| 6 | 55471 | Bracket, Battery |
| 7 | 55670 | Cap, Battery |
| 8 | 55472 | Battery |
| 9 | 55530 | Nut |
| 10 | 55636 | Tube, Battery Vent |
| 11 | 55470 | Wire Harness Assembly |
| 12 | 44745 | Ignition Switch |
| 13 | 138557 | Lockwasher (Ignition Switch Part) |
| 14 | 49643 | Key, Ignition |

| Key No. | Part No. | Description |
|---------|----------|---------------------------------|
| 15 | 48140 | Nut (Ignition Switch Part) |
| 16 | 49211 | Fuse |
| 17 | 9424215 | Locknut, 1/4-20 Thd |
| 18 | 271187 | *Nut, Keps, 5/16-24 Thd |
| 19 | 138485 | Washer, Shakeproof, 5/16 In. |
| 20 | 271172 | *Nut, Keps, 1/4-20 Thd |
| 21 | 51903 | Wire Assembly |
| 22 | 53716 | Solenoid |
| 23 | 121753 | Washer, Shakeproof, 1/4 In. |
| 24 | 121900 | *Screw, Hex Hd, 1/4-20 x 1 In. |
| 25 | 41204 | Switch, Safety |
| 26 | 45878 | Lockwasher (Safety Switch Part) |
| 27 | 45877 | Nut (Safety Switch Part) |
| 28 | 56635 | Nut, Hex, 15/32-32 Thd. |

*Standard Hardware Items - May Be Purchased Locally.