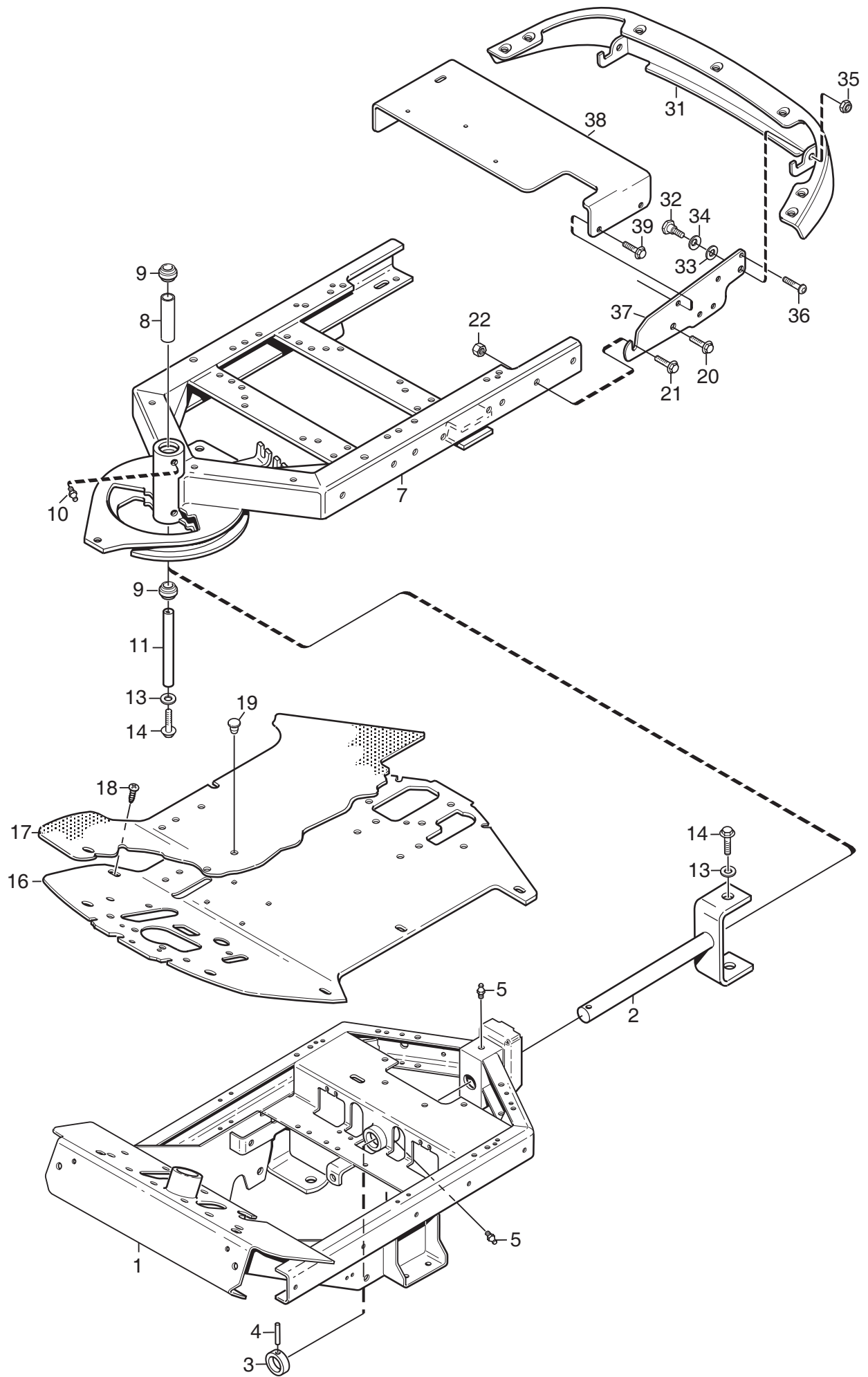


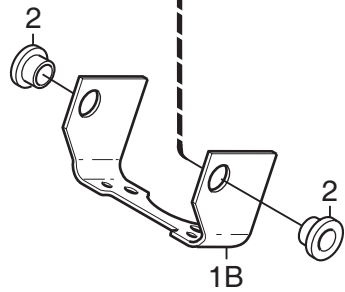
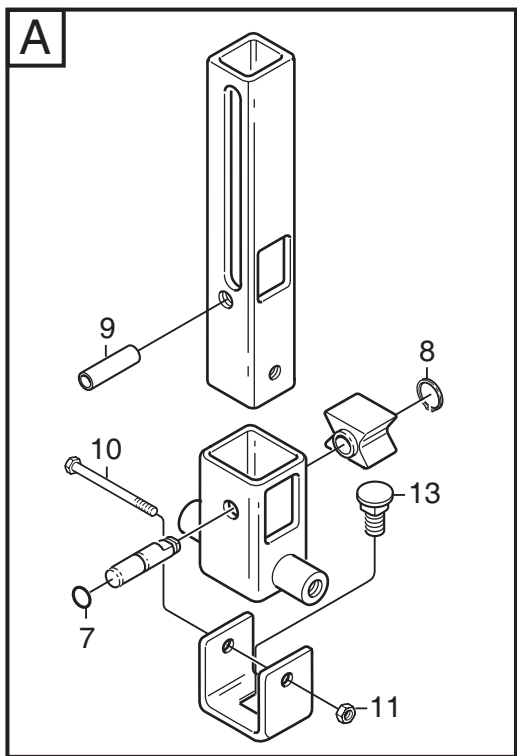
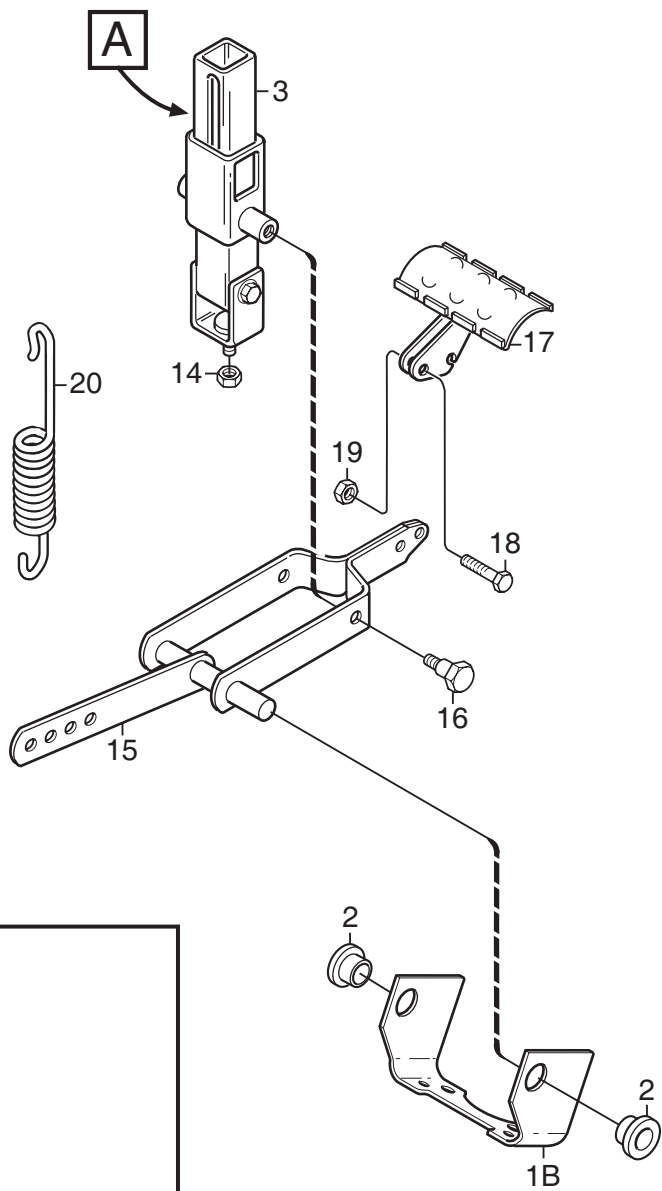
Ausgabe Issue 2008-31		Bild Nr Picture No C195		XK 140HD XK 160HD- XK4 160HD KAROSSERIE		XK 140HD- XK 160HD- XK4 160HD BODY WORK		Seite Page 78	
Pos. Fig.	Anzahl/Quantity				Artikel Nr. Part No	Bezeichnung	Description	Satz Kit	Anmerkung Notes
	6102	6103	6104						
2	7				9838-9530-12	Schraube .....	Screw .....		
3	1				1134-2143-01	Gummistropf .....	Rubber strap .....		
4	1				9632-0516-00	Niet .....	Pop rivet .....		
5	1				9699-0120-02	Scheibe .....	Washer .....		
7	1				1134-5308-06	Kotflügel L- grau .....	Mud guard LH- grey .....		
8	1				1134-5308-05	Kotflügel R- grau .....	Mud guard RH- grey .....		
9	4				9893-0616-16	Schraube .....	Screw .....		
10	4				1134-4176-01	Klemme .....	Clips .....		
11	2				1134-0225-00	Stützblech .....	Support plate .....		
12	6				9945-0816-16	Schraube .....	Screw .....		
13	4				9699-0056-02	Scheibe .....	Flat washer .....		
14	1				1134-5367-01	Stoßfänger- vorder, L .....	Bumper- front, LH .....		
15	1				1134-5367-02	Stoßfänger- vorder, R .....	Bumper- front, RH .....		
16	2				9893-0616-16	Schraube .....	Screw .....		
18	1				1134-6748-01	Vorderpanel .....	Front decor .....		
19	1				1134-4483-01	Buchse .....	Bushing .....		
20	1				1134-5361-01	Vorderdeckel .....	Front cover .....		
21	2				9840-8019-16	Schraube .....	Screw .....		
22	1				1134-6241-01	Haubenstütz .....	Hood support .....		
23	3				9893-0616-16	Schraube .....	Screw .....		
24	1				1134-3970-10	Leiste L- grau .....	Moulding- LH, grey .....		
25	1				1134-3970-09	Leiste R, grau .....	Moulding- RH, grey .....		
26	2				9893-0616-16	Schraube .....	Screw .....		
27	2				9699-0060-02	Scheibe .....	Flat washer .....		
28	2				9747-0631-02	Mutter .....	Lock nut .....		
29	2				9897-0616-16	Schraube .....	Carriage bolt .....		
30	1				1134-5744-03	Motorhaube- rot .....	Engine hood- red .....		
31	1				1134-5743-03	Motordeckel- grau .....	Engine cover- grey .....		
32	1				1134-6116-06	Luftring .....	Air duct .....		

X

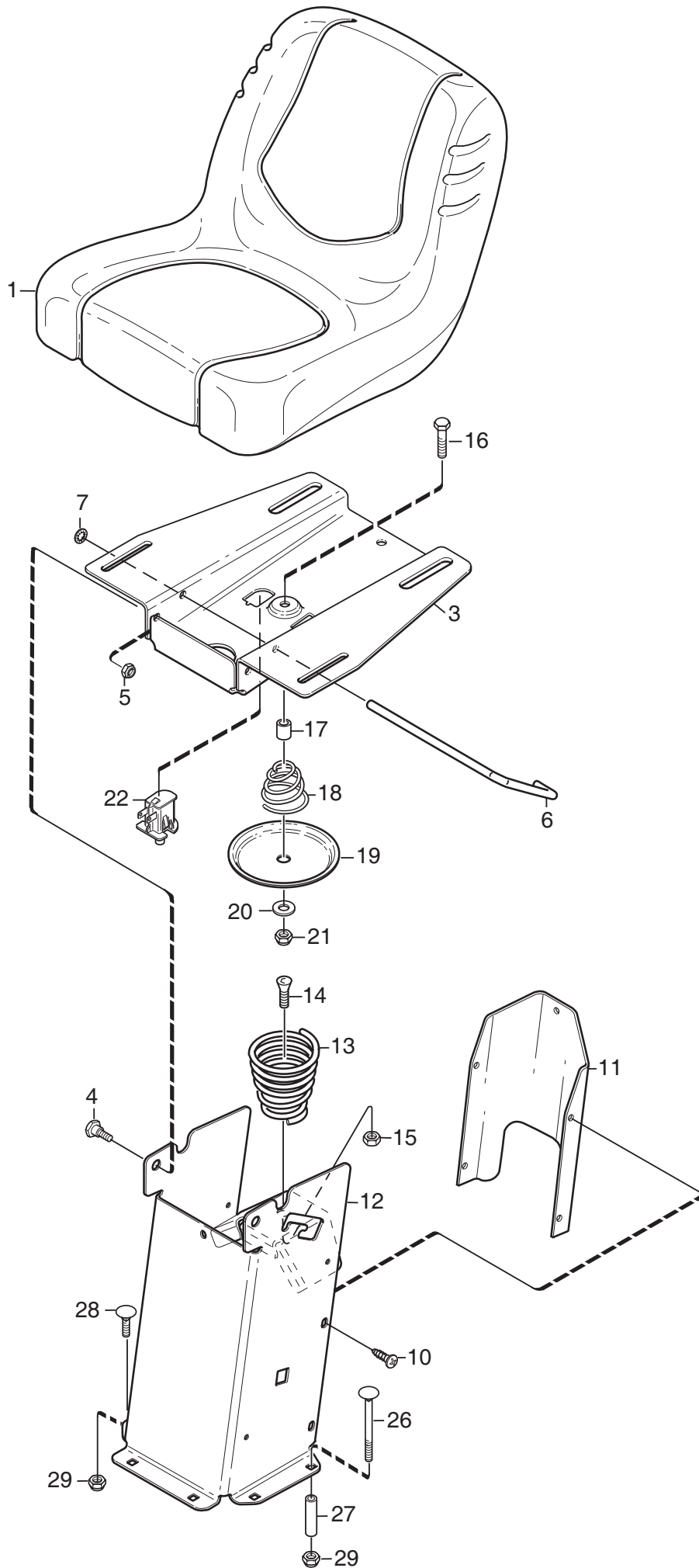


C141

Ausgabe Issue 2008-31		Bild Nr Picture No C141		XK4 160HD RAHMEN 4WD		XK4 160HD FRAME 4WD		Seite Page 82	
Pos. Fig.	Anzahl/Quantity				Artikel Nr. Part No	Bezeichnung	Description	Satz Kit	Anmerkung Notes
	6104								
1	1				1134-5656-02	Rahmen- vordere .....	Frame- front .....		
2	1				1134-3963-02	• Gabel .....	• Clevis .....		
3	1				1134-0031-00	• Lenkachsenanschlag .....	• Pivot shaft stop .....		
4	1				9595-0262-00	• Spannstift .....	• Locating pin .....		
5	2				9501-0500-00	• Schmiernippel .....	• Grease joint .....		
7	1				1134-6466-01	Rahmen- hintere .....	Frame- rear .....		
8	1				1134-5705-01	• Distanz .....	• Spacer .....		
9	2				9547-0001-00	• Lager .....	• Bearing .....		
10	2				9501-0500-00	• Schmiernippel .....	• Grease joint .....		
11	1				1134-5988-01	Zentrumachse .....	Centre shaft .....		
13	2				9699-0035-02	Scheibe .....	Flat washer .....		
14	2				9959-1025-16	Schraube .....	Screw .....		
16	1				1134-6586-01	Bodenblech .....	Floor plate .....		
17	1				1134-6372-04	Bodenblechmatte .....	Floor mat .....		
18	2				9893-0616-16	Schraube .....	Screw .....		
19	2				9403-0048-70	Propfen .....	Plug .....		
20	2				9945-0816-16	Schraube .....	Screw .....		
21	2				9959-0820-16	Schraube .....	Screw .....		
22	2				9739-0831-22	Mutter .....	Nut .....		
31	1				1134-5337-03	Stoßfänger- hintere .....	Bumper- rear, grey .....		Grey
32	2				1134-0240-00	Ansatzbolzen .....	Shoulder screw .....		
33	2				1134-4242-01	Distanzscheibe .....	Spacer washer .....		
34	2				9665-0002-00	Tellerscheibe .....	Bowed washer .....		
35	2				9747-0831-02	Mutter .....	Lock nut .....		
36	2				9943-0516-16	Schraube .....	Screw .....		
37	2				1134-5345-01	Halterung .....	Attachment .....		
38	1				1134-5344-01	Batterieregal .....	Battery shelf .....		
39	4				9945-0816-16	Schraube .....	Screw .....		

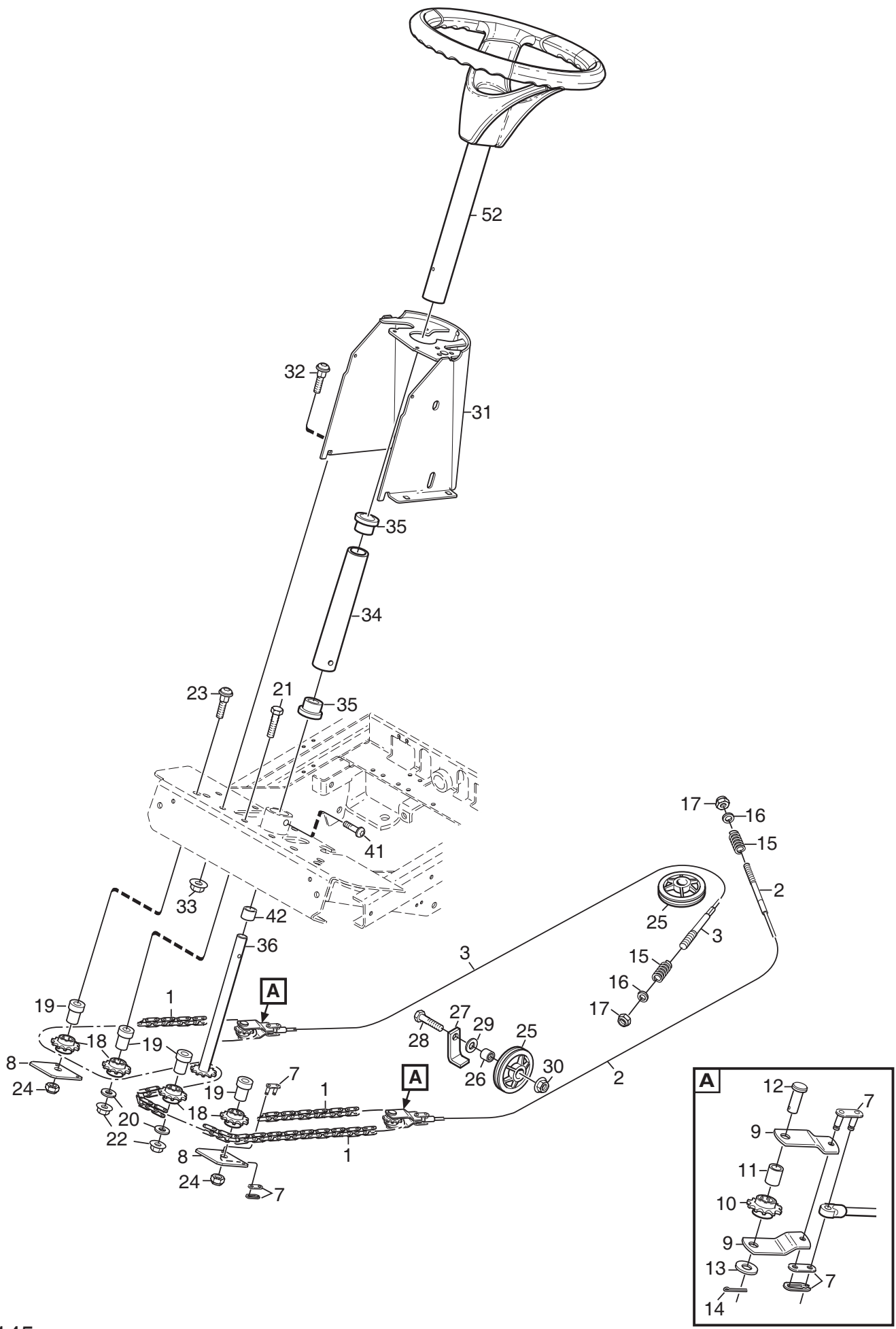


Ausgabe Issue 2008-31		Bild Nr Picture No C142A		XK 140HD XK 160HD- XK4 160HD PEDALHEBER		XK 140HD- XK 160HD- XK4 160HD PEDAL LIFT		Seite Page 84	
Pos. Fig.	Anzahl/Quantity				Artikel Nr. Part No	Bezeichnung	Description	Satz Kit	Anmerkung Notes
	6102	6103	6104						
1B	1				1134-4117-01	Halterung.....	Bracket.....		
2	2				1134-2684-01	Lager.....	Bearing.....		
3	1				1134-4945-01	Hebesperre Kpl.....	Lift catch assy.....		
7	1				9404-0027-01	• O- ring.....	• O- ring.....		
8	1				9650-0039-04	• Schließring.....	• Lock ring.....		
9	1				9595-0276-01	• Spannstift.....	• Locating pin.....		
10	1				9997-0640-12	• Schraube.....	• Screw.....		
11	1				9747-0631-02	• Mutter.....	• Lock nut.....		
13	1				9897-0820-16	• Schraube.....	• Screw.....		
14	1				9747-0831-02	Mutter.....	Lock nut.....		
15	1				1134-4860-01	Hebegabel.....	Lift fork.....		
16	2				1134-0240-00	Ansatzbolzen.....	Shoulder screw.....		
17	1				1134-4938-01	Hebepedal.....	Lift pedal.....		
18	2				9997-0625-16	Schraube.....	Screw.....		
19	2				9739-0631-22	Mutter.....	Nut.....		
20	1				4231-0013-00	Feder.....	Spring.....		



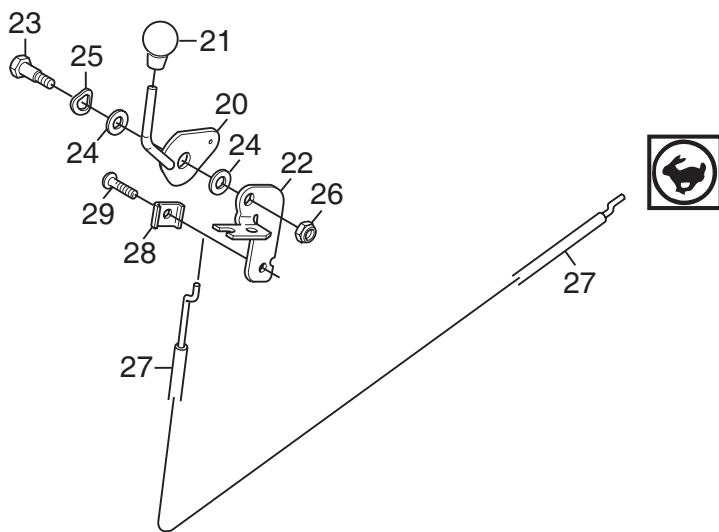
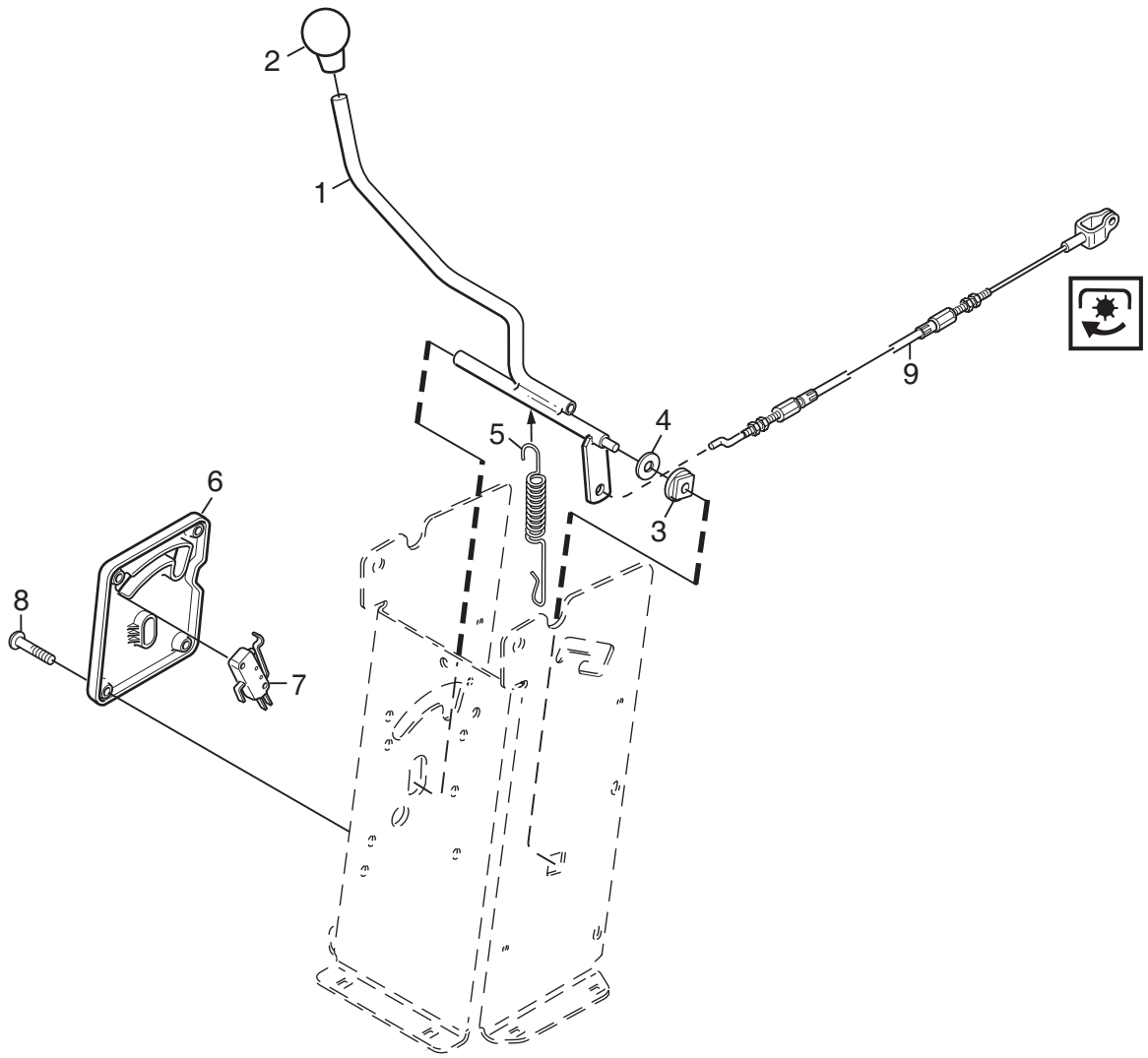
Ausgabe Issue 2008-31		Bild Nr Picture No C143		XK 140HD- XK 160HD- XK4 160HD SITZ		XK 140HD- XK 160HD- XK4 160HD SEAT		Seite Page 86	
Pos. Fig.	Anzahl/Quantity				Artikel Nr. Part No	Bezeichnung	Description	Satz Kit	Anmerkung Notes
	6102	6103	6104						
1	1				1134-5534-01	Sitz .....	Seat .....		
3	1				1134-5301-01	Sitzplatte .....	Seat plate .....		
4	2				1134-0240-00	Ansatzbolzen .....	Shoulder screw .....		
5	2				9747-0831-02	Mutter .....	Lock nut .....		
6	1				1134-5454-01	Sperre .....	Catch .....		
7	1				9675-0012-02	Verriegelungsscheibe .....	Locking washer .....		
10	4				9893-0616-16	Schraube .....	Screw .....		
11	1				1134-5300-02	Hinterplatte- rot .....	Rear plate- red .....		
12	1				1134-5296-06	Sitzkonsole- rot .....	Seat bracket- red .....		
13	1				1134-4256-01	Sitzfeder .....	Seat spring .....		
14	1				9924-1235-19	Schraube .....	Screw .....		
15	1				9747-1231-02	Mutter .....	Lock nut .....		
16	1				9997-0840-16	Schraube .....	Screw .....		
17	1				1134-1565-06	Distanz .....	Spacer .....		
18	1				1134-5302-01	Feder .....	Spring .....		
19	1				1134-5299-01	Druckplatte .....	Push plate .....		
20	1				9699-0090-02	Scheibe .....	Flat washer .....		
21	1				9747-0831-02	Mutter .....	Lock nut .....		
22	1				1134-3156-02	Schalter (grau) .....	Switch (grey) .....		
26	2				9897-0880-12	Schraube .....	Screw .....		L = 80 mm
27	2				1134-1565-08	Distanz .....	Spacer .....		
28	4				9897-0820-16	Schraube .....	Screw .....		L = 20 mm
29	6				9747-0831-02	Mutter .....	Lock nut .....		



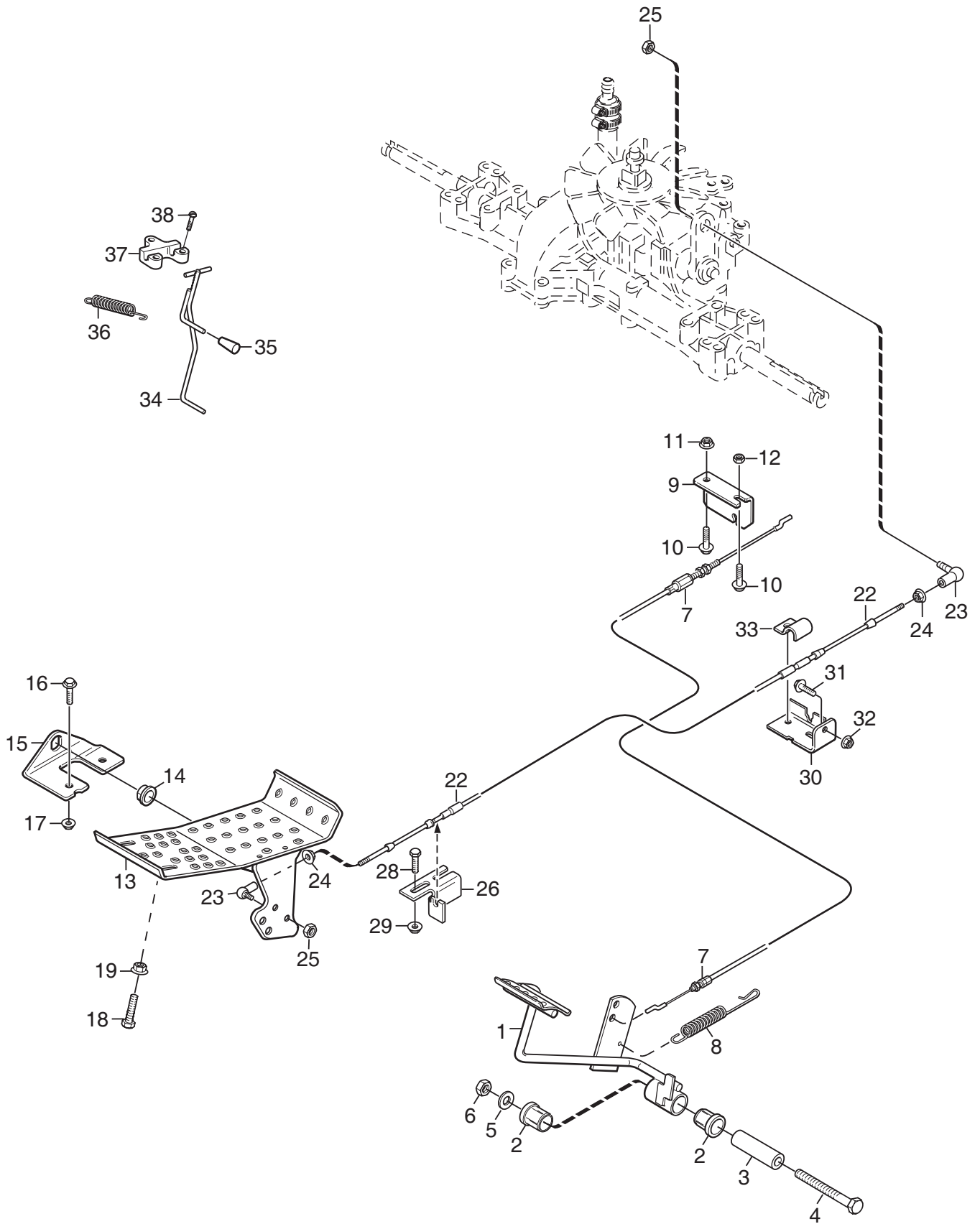


C145

Ausgabe Issue 2008-31		Bild Nr Picture No C145		XK4 160HD LENKUNG 4WD		XK4 160HD STEERING 4WD		Seite Page 90	
Pos. Fig.	Anzahl/Quantity				Artikel Nr. Part No	Bezeichnung	Description	Satz Kit	Anmerkung Notes
	6104								
1	1				1134-6374-10 Kette .....	Chain.....		129 links	
2	1				1134-2817-03 Lenkseil- L .....	Steering cable- LH.....			
3	1				1134-2817-04 Lenkseil- R .....	Steering cable- RH .....			
7	4				1134-2824-02 Kettenschloß.....	Chain lock .....			
8	2				1134-5652-01 Halter.....	Attachment.....			
9	4				1134-5651-01 Bügel .....	Bracket.....			
10	2				1134-2816-01 Kettenrad .....	Sprocket.....			
11	2				1134-0041-02 Hülse .....	Idler wheel bush.....			
12	2				1134-4817-01 Zapfen .....	Pin .....			
13	2				9699-0035-02 Scheibe.....	Flat washer.....			
14	2				9599-0054-02 Splint .....	Cotter pin .....			
15	2				1134-3817-01 Druckfeder.....	Compression spring.....			
16	2				9699-0090-02 Scheibe.....	Flat washer.....			
17	2				9747-0831-02 Mutter.....	Lock nut .....			
18	4				1134-2816-01 Kettenrad .....	Sprocket.....			
19	4				1134-5653-01 Distanz.....	Spacer .....			
20	2				9699-0035-02 Scheibe.....	Flat washer.....			
21	2				9997-1060-12 Schraube .....	Screw.....			
22	2				9739-1031-22 Mutter .....	Nut .....			
23	2				9897-1060-12 Schraube .....	Screw.....			
24	2				9731-1031-22 Mutter.....	Nut .....			
X 25	3				1134-0072-02 Seilrolle .....	Steering pulley .....			
X 26	2				1134-0041-01 Hülse .....	Bushing.....			
27	2				1134-0046-00 Drahthalter.....	Wire clamp.....			
28	2				9997-1040-16 Schraube .....	Screw.....			
29	2				9699-0035-02 Scheibe.....	Flat washer.....			
30	2				9739-1031-22 Mutter .....	Nut .....			
31	1				1134-5349-05 Lenkkonsole- grau .....	Steering console- grey .....			
32	4				9897-0820-16 Schraube .....	Screw.....			
33	4				9739-0831-22 Mutter .....	Nut .....			
34	1				1134-1305-05 Lenkrohr- untere .....	Steering column- lower .....			
35	2				1134-1901-01 Lager .....	Bearing.....			
36	1				1134-2821-05 Lenkstange .....	Steering rod .....			
41	2				9893-0616-16 Schraube .....	Screw.....			
42	1				1134-2837-03 Distanz.....	Spacer.....			
52	1				1134-5496-01 Lenkrad .....	Steering wheel .....			

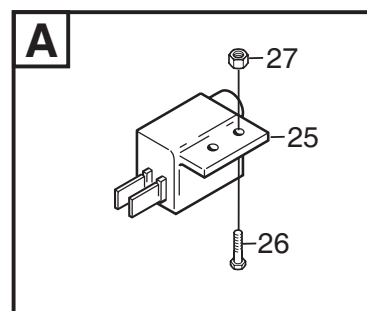
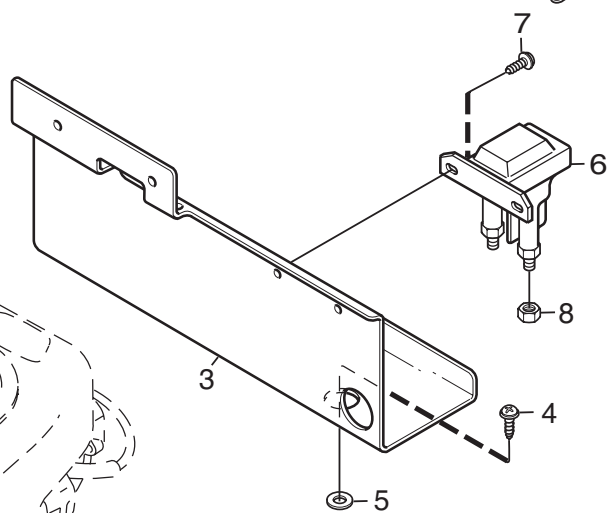
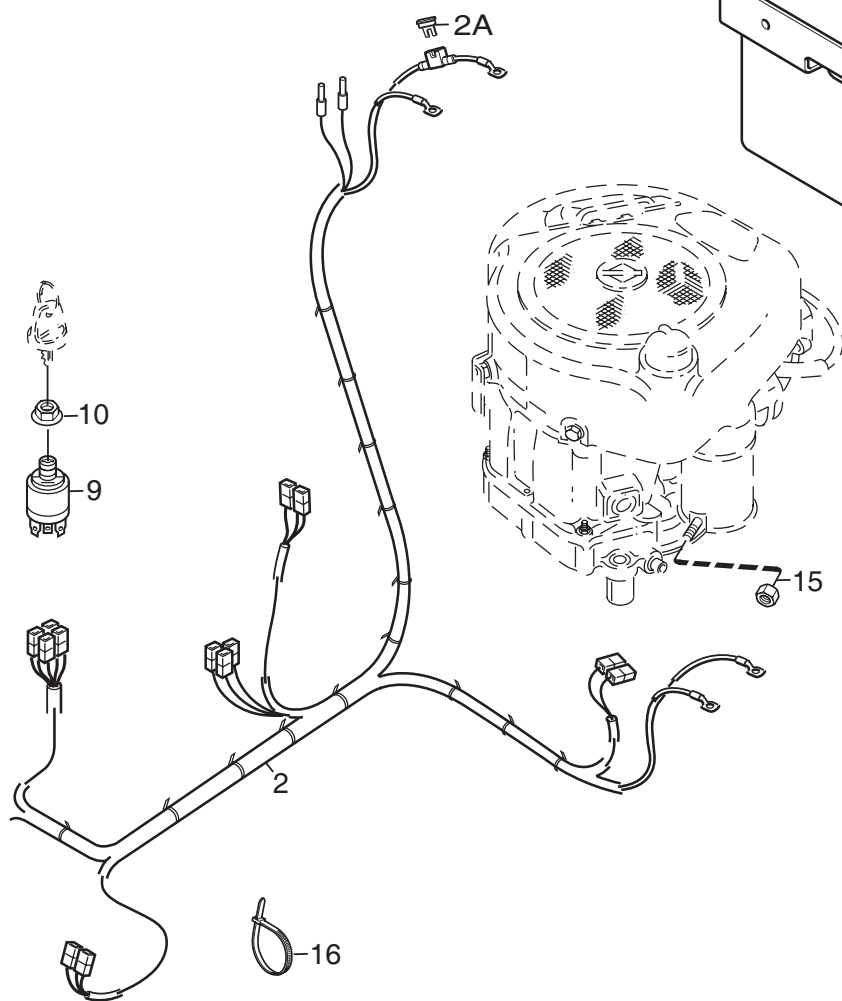
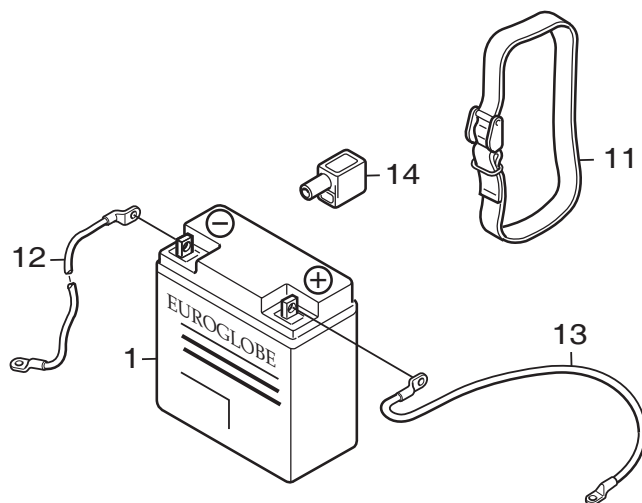
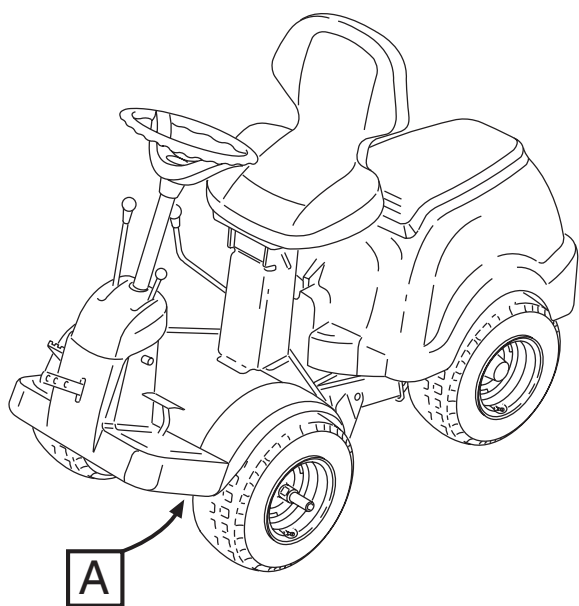


Ausgabe Issue 2008-31		Bild Nr Picture No C146A		XK 140HD- XK 160HD- XK4 160HD HANDREGULIERUNG		XK 140HD- XK 160HD- XK4 160HD HAND CONTROLS		Seite Page 92	
Pos. Fig.	Anzahl/Quantity				Artikel Nr. Part No	Bezeichnung	Description	Satz Kit	Anmerkung Notes
	6102	6103	6104						
1	1				1134-6301-01	Einkupplungshebel .....	Engagement lever .....		
2	1				1134-2551-01	Knopf .....	Knob .....		
3	1				1134-3790-02	Lager .....	Bearing .....		
4	1				9699-0090-02	Scheibe .....	Flat washer .....		
5	1				4231-0013-00	Feder .....	Spring .....		
6	1				1134-5368-01	Panel .....	Dashboard .....		
7	1				9400-0312-01	Schalter .....	Micro switch .....		
8	4				9946-0525-16	Schraube .....	Screw .....		
9	1				1134-3573-05	Regulierdraht .....	Control cable .....		
20	1				1134-5465-01	Gasregulierung .....	Throttle lever .....		
21	1				1134-4078-01	Knopf .....	Knob .....		
22	1				1134-5464-01	Halterung .....	Bracket .....		
23	1				1134-0240-00	Ansatzbolzen .....	Shoulder screw .....		
24	2				1134-4242-01	Distanzscheibe .....	Spacer washer .....		
25	1				9694-0001-00	Scheibe .....	Washer .....		
26	1				9747-0831-02	Mutter .....	Lock nut .....		
27	1				1134-4197-03	Gasdraht .....	Throttle cable .....		
28	1				9500-9991-00	Drahtklemme .....	Cable clamp .....		
29	1				9943-0516-16	Schraube .....	Screw .....		



Ausgabe Issue 2008-31		Bild Nr Picture No C149		XK4 160HD FUßBEDIENELEMENTE 4WD		XK4 160HD FOOT CONTROLS 4WD		Seite Page 96	
Pos. Fig.	Anzahl/Quantity				Artikel Nr. Part No	Bezeichnung	Description	Satz Kit	Anmerkung Notes
	6104								
1	1				1134-5655-01	Brems/Kupplungspedal .....	Brake/clutch pedal.....		
2	2				1134-0068-00	Lager .....	Bearing.....		
3	1				1134-5677-02	Distanz .....	Spacer.....		
4	1				9997-1070-12	Schraube .....	Screw.....		
5	1				9699-0030-02	Scheibe.....	Flat washer.....		
6	1				9739-1031-22	Mutter .....	Nut.....		
7	1				1134-6005-01	Draht .....	Cable.....		
8	1				4231-0013-00	Feder .....	Spring.....		
9	1				1134-6467-01	Drahthalter.....	Cable holder.....		
10	2				9959-0820-16	Schraube .....	Screw.....		
11	1				9739-0831-22	Mutter .....	Nut.....		
12	1				9747-0831-02	Mutter.....	Lock nut.....		
13	1				1134-6353-01	Fahrpedal.....	Drive pedal.....		
14	2				1134-6313-01	Lager .....	Bearing.....		
15	2				1134-2700-01	Halter .....	Bracket.....		
16	2				9959-0820-16	Schraube .....	Screw.....		
17	2				9739-0831-22	Mutter .....	Nut.....		
18	1				9997-0835-16	Schraube .....	Screw.....		
19	1				9739-0831-22	Mutter .....	Nut.....		
22	1				1134-2766-05	Fahrtregulierdraht.....	Speed control cable.....		
23	2				9570-0001-00	Winkelgelenk .....	Elbow link.....		
24	2				9739-0531-22	Mutter .....	Nut.....		
25	2				9747-0531-02	Mutter .....	Nut.....		
26	1				1134-6317-01	Drahthalter.....	Cable holder.....		
28	2				9959-0620-16	Schraube .....	Screw.....		
29	2				9739-0631-22	Mutter .....	Nut.....		
30	1				1134-3395-01	Halterung.....	Attachment.....		
31	2				9959-0820-16	Schraube .....	Screw.....		
32	2				9739-0831-22	Mutter .....	Nut.....		
33	1				1134-2021-01	Klemme .....	Clamp.....		
34	1				1134-5353-01	Bremsstange .....	Brake rod.....		
35	1				1134-2786-01	Plastikknopf.....	Plastic knob.....		
36	1				1131-1497-01	Feder .....	Spring.....		
37	1				1134-4002-01	Halterung.....	Brake rod attachment.....		
38	3				9838-9516-12	Schraube .....	Screw.....		

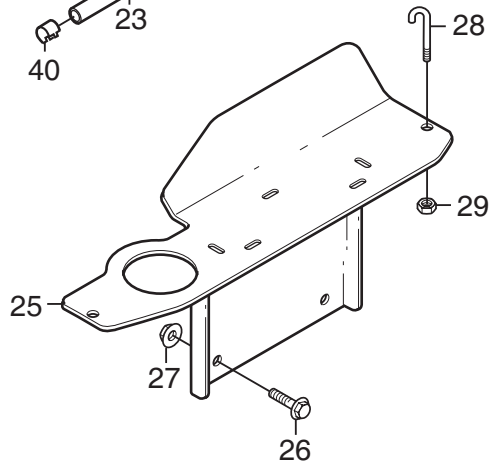
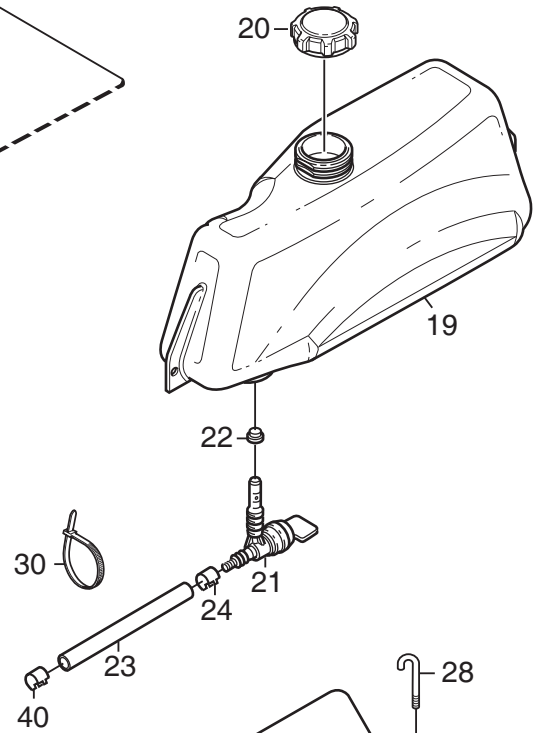
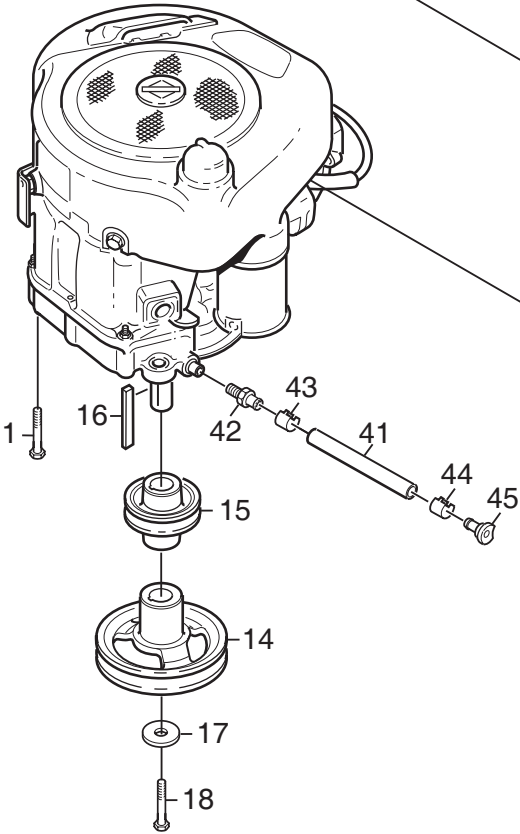
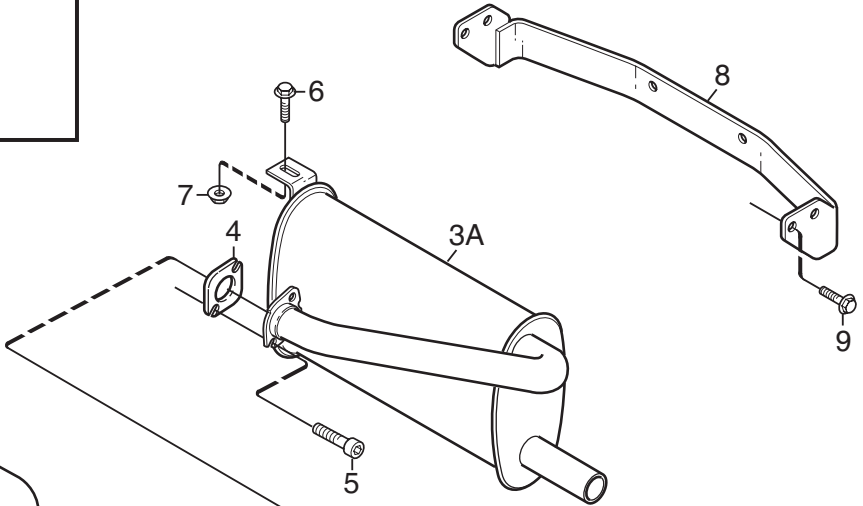
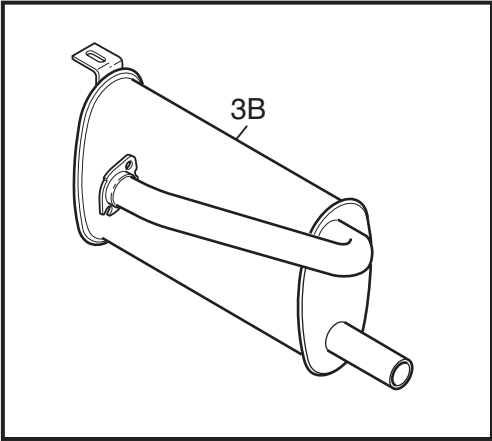
X



C150A

Ausgabe Issue 2008-31		Bild Nr Picture No C150A		XK 140HD- XK 160HD- XK4 160HD EL. AUSSTATTUNG		XK 140HD- XK 160HD- XK4 160HD EL. EQUIPMENT		Seite Page 98	
Pos. Fig.	Anzahl/Quantity			Artikel Nr. Part No	Bezeichnung	Description	Satz Kit	Anmerkung Notes	
	6102 6103	6104							
1	1	1		1134-4804-01	Batterie .....	Battery .....		20A	
2	1	1		1134-5769-01	Kabelbündel .....	Harness .....			
2A	1	1		1134-3496-06	• Sicherung .....	• Fuse .....			
3	1	1		1134-5343-01	Batteriekonsole .....	Battery bracket .....			
4	3	3		9852-8013-16	Schraube .....	Screw .....			
5	2	2		9699-0060-02	Scheibe .....	Flat washer .....			
6	1	1		1134-3901-01	Magnetschalter .....	Solenoid .....			
7	2	2		9852-8013-16	Schraube .....	Screw .....			
8	2	2		9794-5131-02	Mutter .....	Nut .....			
9	1	1		1134-4093-01	Zündschloß .....	Ignition switch .....			
10	1	1		1134-4749-01	Mutter .....	Nut .....			
11	1	1		1134-5245-01	Batterieriemen .....	Battery strap .....			
12	1	1		1134-2167-01	Kabel .....	Cable .....			
13	1	1		1134-0234-02	Batteriekabel ( + ) .....	Battery cable ( + ) .....			
14	1	1		1134-2310-01	Schutzkappe .....	Guard cap .....			
15	1	1		9795-3531-02	Mutter .....	Nut .....			
16	15	15		9579-0003-00	Kabelhalter .....	Cable holder .....			
25	1	1		1134-3399-02	Schalter .....	Switch .....			
26		2		9943-0516-16	Schraube .....	Screw .....			
26	2			9997-0520-16	Schraube .....	Screw .....			
27	2			9747-0531-02	Mutter .....	Nut .....			



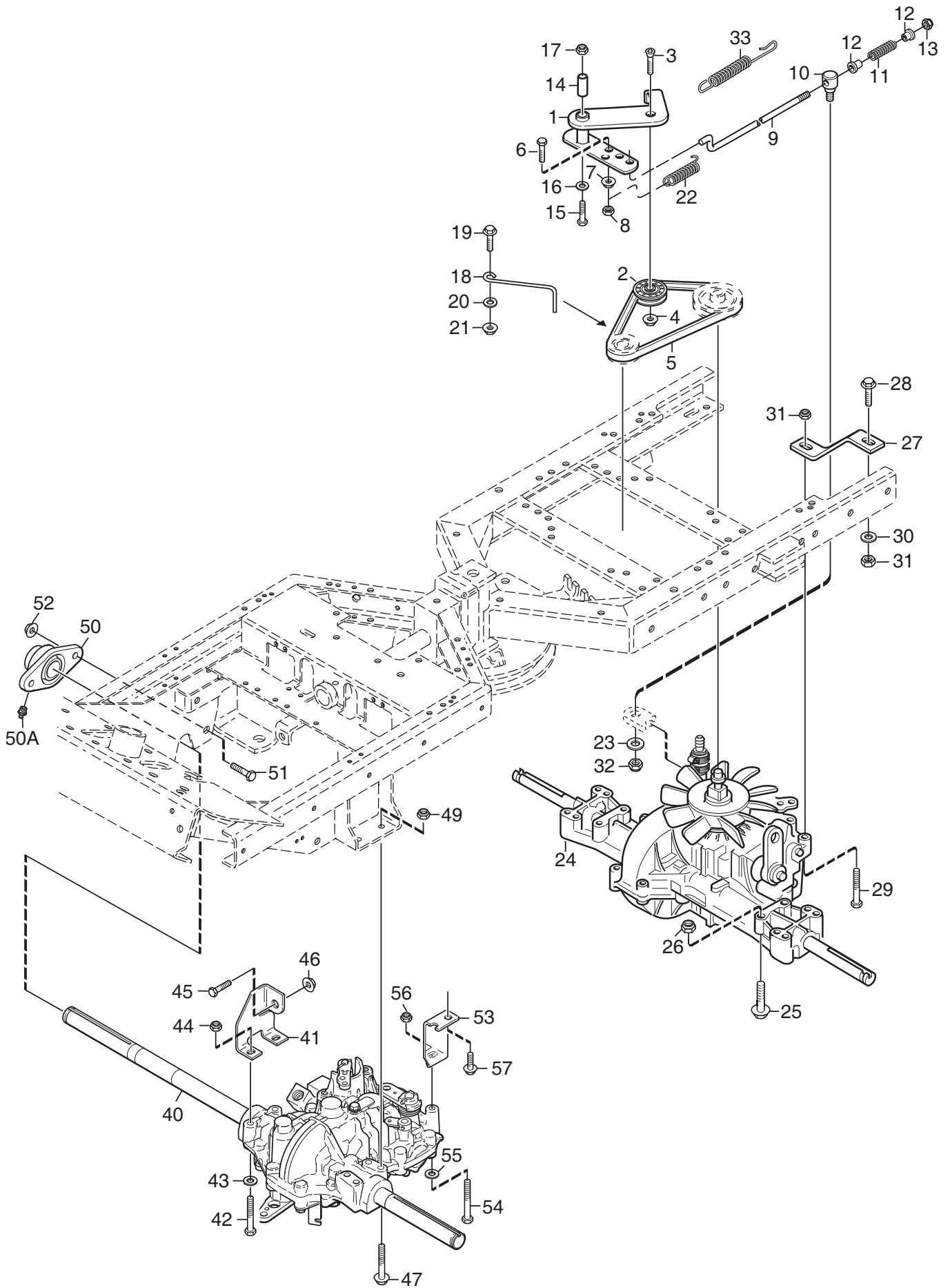


C151A

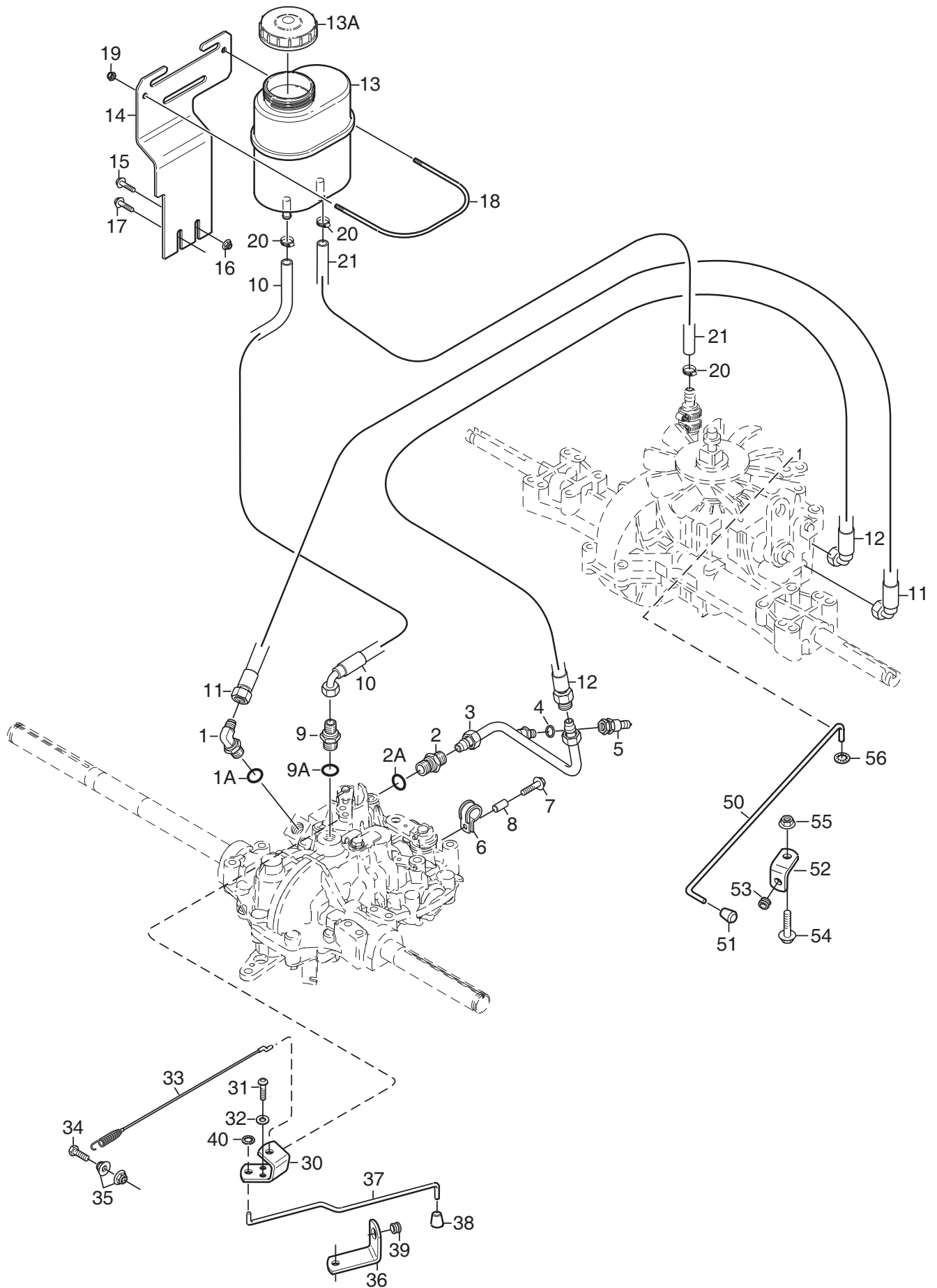
Ausgabe Issue 2008-31		Bild Nr Picture No C151A		XK 140HD- XK 160HD- XK4 160HD MOTOR		XK 140HD- XK 160HD- XK4 160HD ENGINE		Seite Page 100	
Pos. Fig.	Anzahl/Quantity			Artikel Nr. Part No	Bezeichnung	Description	Satz Kit	Anmerkung Notes	
	6102	6103	6104						
1	4	4	4	9955-3725-16	Schraube .....	Screw .....		3/8" UNC x 25 mm	
3A	1			1134-5370-01	Schalldämpfer .....	Muffler .....			
3B		1	1	1134-5369-01	Schalldämpfer .....	Muffler .....			
4	1	1	1	1134-0433-00	Schalldämpferdichtung.....	Muffler gasket.....			
5	2	2	2	1134-4930-01	Schraube .....	Screw .....			
6	1	1	1	9959-0820-16	Schraube .....	Screw .....			
7	1	1	1	9739-0831-22	Mutter .....	Nut .....			
8	1	1	1	1134-5390-01	Anhängeralterung .....	Tow bar bracket.....			
9	4	4	4	9945-0816-16	Schraube .....	Screw .....			
14	1	1	1	1134-6419-01	Motorriemenscheibe.....	Engine pulley.....			
15	1	1	1	1134-6137-01	Motorriemenscheibe.....	Engine pulley.....			
16	1	1	1	9600-0251-01	Keil .....	Key .....	L = 2 1/2"		
17	1	1	1	1134-5017-01	Scheibe.....	Washer .....			
18	1	1	1	9987-5332-16	Schraube .....	Screw .....			
19	1	1	1	1134-6618-01	Kraftstofftank.....	Fuel tank .....			
20	1	1	1	1134-5532-01	Tankdeckel.....	Fuel tank cap.....			
21	1	1	1	1134-3224-01	Benzinhahn .....	Fuel shut-off valve .....			
22	1	1	1	1134-3225-01	Gummibuchse .....	Grommet.....			
23	1	1		1134-2975-01	Benzinschlauch.....	Fuel hose.....	L = 520 mm L = 350 mm		
23			1	1134-2975-07	Benzinschlauch.....	Fuel hose.....			
24	1	1	1	9578-0023-02	Schlauchklemme .....	Hose clamp .....			
25	1	1	1	1134-6627-01	Tankkonsole.....	Fuel tank bracket .....			
26	2	2	2	9959-0820-16	Schraube .....	Screw .....			
27	2	2	2	9739-0831-22	Mutter .....	Nut .....			
28	2	2	2	1134-5346-01	Tankbügel .....	Fuel tank loop.....			
29	2	2	2	9747-0631-02	Mutter .....	Lock nut .....			
30	1	1	1	9579-0003-00	Kabelhalter.....	Cable holder .....			
40	1	1	1	9578-0023-02	Schlauchklemme .....	Hose clamp .....			
41	1	1	1	1134-5827-01	Ölablaß kpl.....	Oil drain assy .....	Pos 42 - 45 incl.		
42	1	1	1	1134-5825-01	• Nippel .....	• Nipple.....			
43	1	1	1	9578-0023-04	• Schlauchklemme .....	• Hose clamp .....			
44	1	1	1	1134-3499-02	• Schlauchklemme .....	• Hose clamp .....			
45	1	1	1	1134-5826-01	• Propfen.....	• Plug.....			

X

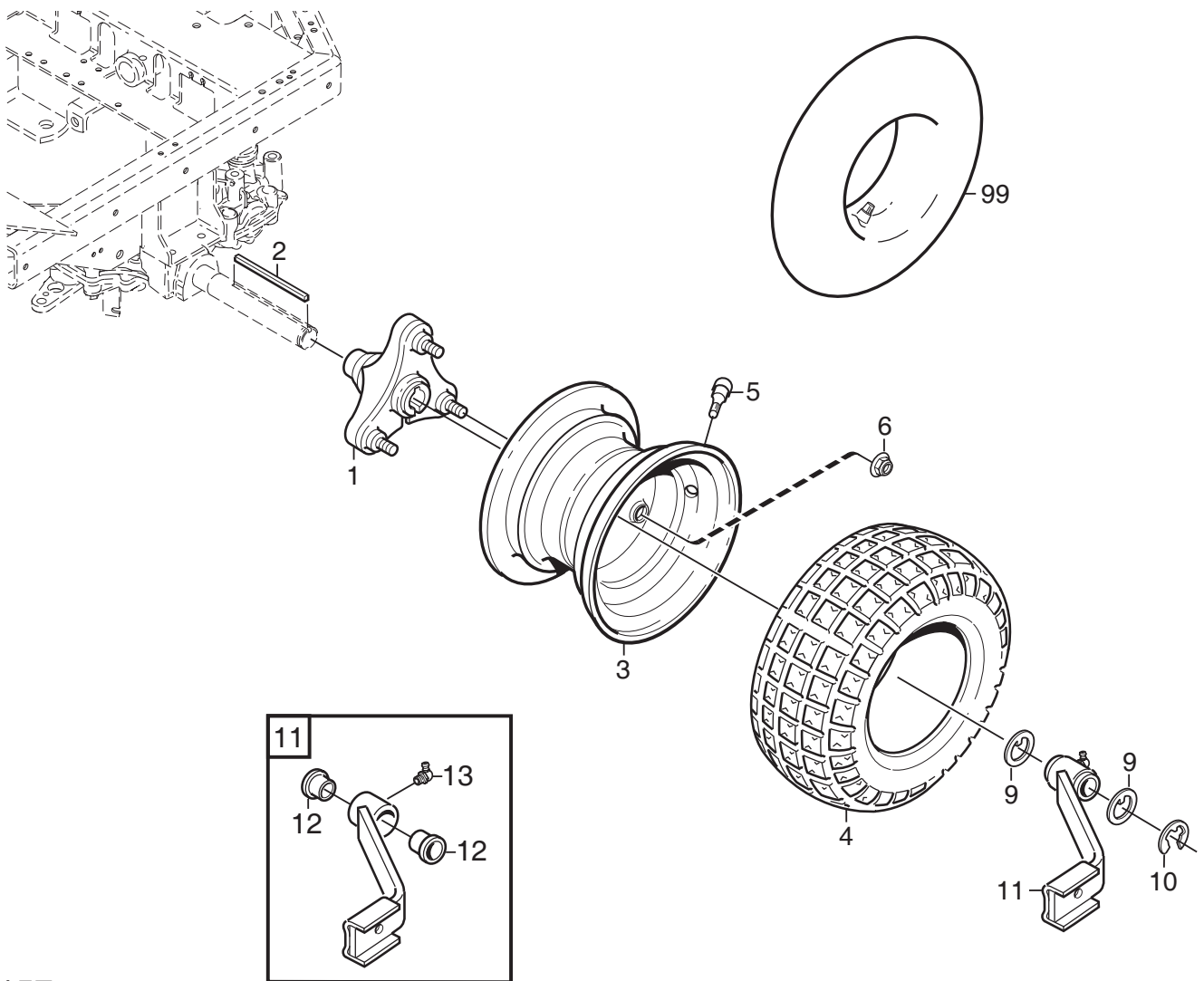
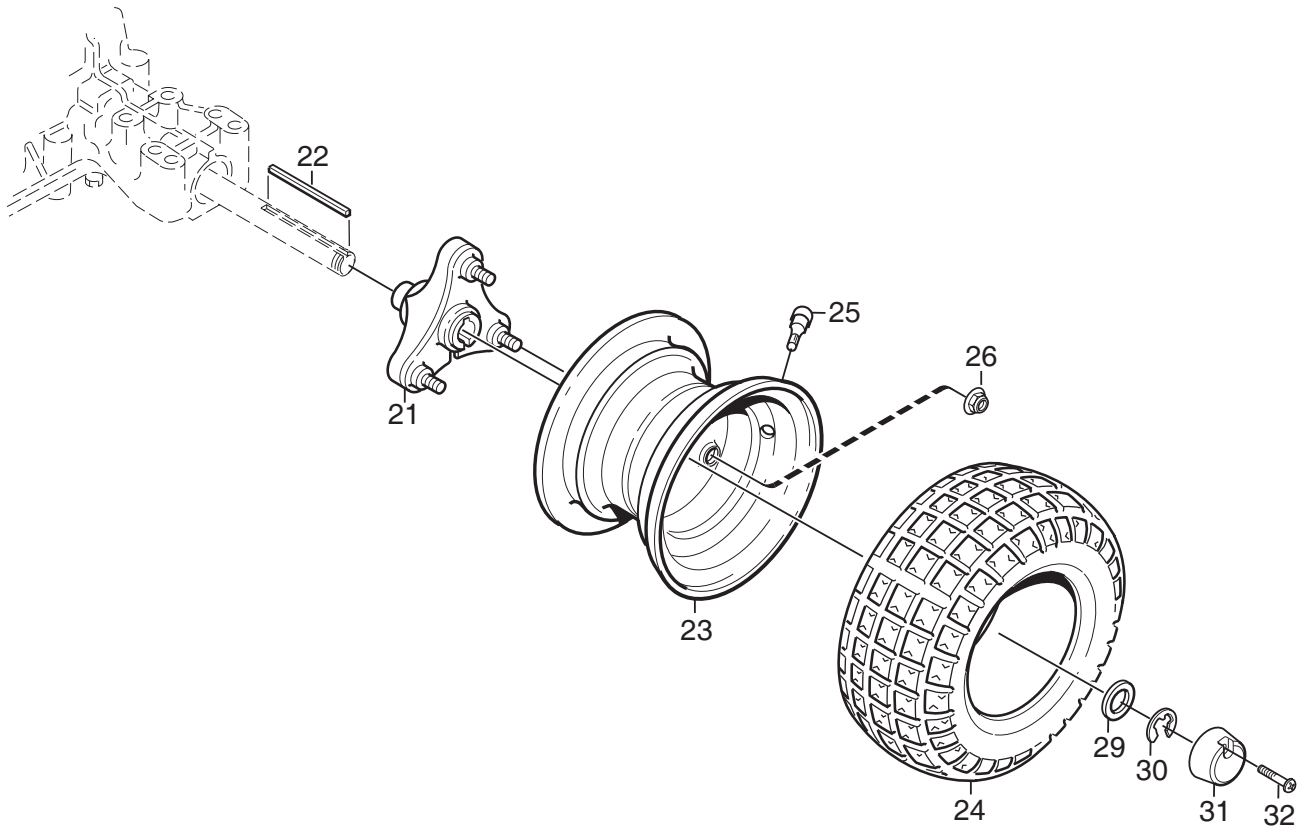
X



Ausgabe Issue 2008-31		Bild Nr Picture No C154		XK4 160HD TRANSMISSION 4WD (mekanische Teile)		XK4 160HD TRANSMISSION 4WD (mechanical parts)		Seite Page 104	
Pos. Fig.	Anzahl/Quantity				Artikel Nr. Part No	Bezeichnung	Description	Satz Kit	Anmerkung Notes
	6104								
1	1				1134-4000-02	Spannarm .....	Tension arm .....		
2	1				1134-3459-01	Spannrolle .....	Tension roller .....		
3	1				9924-1035-16	Schraube .....	Screw .....		
4	1				9799-1031-02	Mutter .....	Nut .....		
5	1				9585-0091-01	Keilriemen .....	V- belt.....		
6	1				9997-0625-16	Schraube .....	Screw .....		
7	1				9739-0631-22	Mutter .....	Nut .....		
8	1				9747-0631-02	Mutter .....	Lock nut .....		
9	1				1134-3377-02	Regulierstange.....	Control rod.....		
10	1				1134-4171-01	Gelenkzapfen .....	Pivot pin.....		
11	1				1134-4183-01	Druckfeder.....	Compression spring.....		
12	2				1134-3456-01	Buchse.....	Bushing.....		
13	1				9747-0631-02	Mutter .....	Lock nut .....		
14	1				1134-1565-08	Distanz.....	Spacer .....		
15	1				9997-0870-16	Schraube .....	Screw .....		
16	1				9699-0056-02	Scheibe.....	Flat washer.....		
17	1				9747-0831-02	Mutter.....	Lock nut .....		
18	1				1134-3289-02	Riemenführung.....	Belt guide .....		
19	1				9959-0820-16	Schraube .....	Screw .....		
20	1				9699-0056-02	Scheibe.....	Flat washer.....		
21	1				9739-0831-22	Mutter .....	Nut .....		
22	1				1134-6414-01	Feder .....	Spring .....		
23	1				9699-0060-02	Scheibe.....	Flat washer.....		
24	1				1134-6394-01	Getriebe kpl .....	Transaxle assy.....		Kanzaki K574G
25	4				9960-0860-12	Schraube .....	Screw .....		
26	4				9747-0831-02	Mutter.....	Lock nut .....		
27	1				1134-3913-01	Strebe.....	Strut .....		
28	1				9959-0825-16	Schraube .....	Screw .....		
29	1				9997-0845-12	Schraube .....	Screw .....		
30	1				9699-0090-02	Scheibe.....	Flat washer.....		
31	2				9747-0831-02	Mutter.....	Lock nut .....		
32	1				9747-0631-02	Mutter .....	Lock nut .....		
33	1				4231-0013-00	Feder .....	Spring .....		
40	1				1134-6029-01	Motorachse- vorne.....	Transaxle- front .....		Kanzaki KTM 10M
41	1				1134-5650-01	Getriebehalter .....	Transaxle bracket .....		
42	2				9997-0860-16	Schraube .....	Screw .....		
43	2				9699-0090-02	Scheibe.....	Flat washer.....		
44	2				9747-0831-02	Mutter.....	Lock nut .....		
45	1				9959-1025-16	Schraube .....	Screw .....		
46	1				9731-1031-22	Mutter.....	Nut .....		
47	2				9960-0860-12	Schraube .....	Screw .....		
49	2				9747-0831-02	Mutter.....	Lock nut .....		
50	1				1134-5703-01	Flanschlager .....	Flange bearing.....		
50A	1				9501-0500-00	• Schmiernippel.....	• Grease joint.....		
51	2				9997-1040-16	Schraube .....	Screw .....		
52	2				9731-1031-22	Mutter.....	Nut .....		
53	1				1134-5670-01	Strebe.....	Strut .....		
54	1				9997-0880-16	Schraube .....	Screw .....		
55	1				9699-0090-02	Scheibe.....	Flat washer.....		
56	1				9747-0831-02	Mutter.....	Lock nut .....		
57	2				9945-0816-16	Schraube .....	Screw .....		

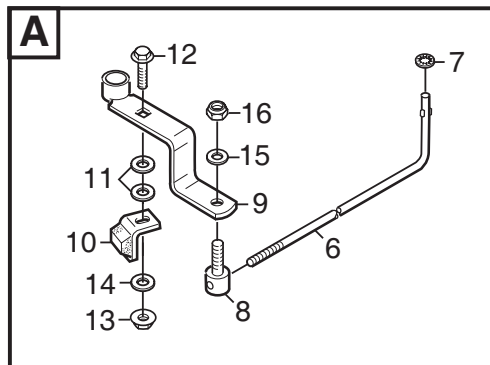
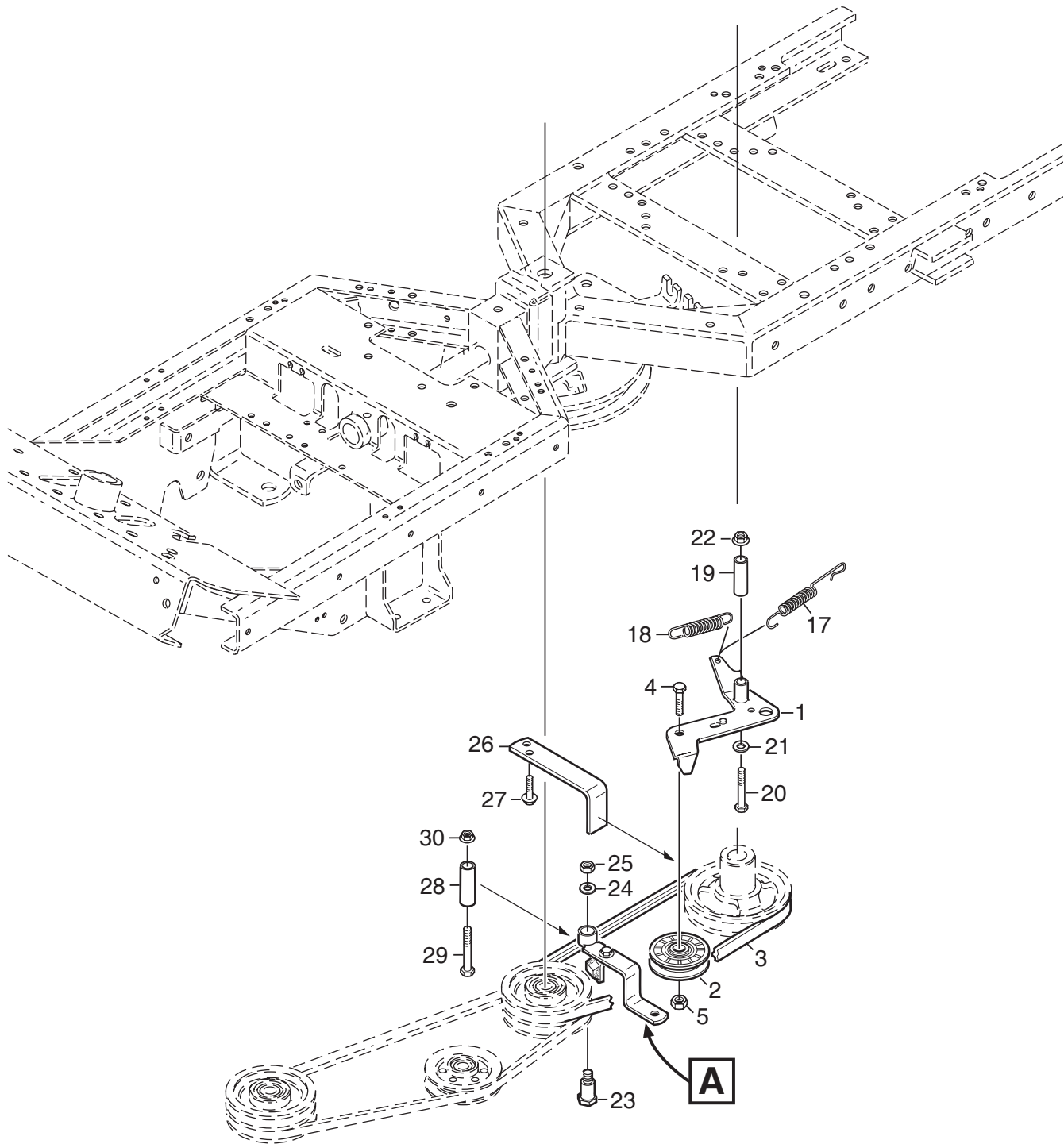


Ausgabe Issue 2008-31		Bild Nr Picture No C155		XK4 160HD TRANSMISSION 4WD (hydraulische Teile)		XK4 160HD TRANSMISSION 4WD (hydraulic parts)		Seite Page 106	
Pos. Fig.	Anzahl/Quantity				Artikel Nr. Part No	Bezeichnung	Description	Satz Kit	Anmerkung Notes
	6104								
1	1				1134-6044-01 Winkeladapter.....	Angle coupling .....			3/4" x 9/16"
1A	1				9404-0029-01 • O-ring.....	• O-ring .....			
2	1				1134-5875-01 Hydraulikkupplung.....	Hydraulic coupling .....			3/4"
2A	1				9404-0029-01 • O-ring.....	• O-ring .....			
3	1				1134-6039-01 Hydraulrohr .....	Hydraulic pipe .....			
4	1				1134-4948-01 Dichtungsscheibe .....	Seal washer.....			1/4"
5	1				1134-6042-01 Schnellkupplung .....	Quick coupling-male.....			
6	1				9578-0028-01 Rohrklemme.....	Tube clamp.....			
7	1				9959-0825-16 Schraube .....	Screw .....			
8	1				1134-1565-09 Distanz.....	Spacer.....			
9	1				1134-5809-01 Hydraulikkupplung.....	Hydraulic coupling .....			3/4" x 9/16"
9A	1				9404-0029-01 • O-ring.....	• O-ring .....			
10	1				1134-5758-01 Hydraulschlauch .....	Hydraulic tube.....			
11	1				1134-6048-01 Hydraulschlauch .....	Hydraulic tube.....			
12	1				1134-6043-01 Hydraulschlauch .....	Hydraulic tube.....			
13	1				1134-6011-01 Hydraulöltank .....	Hydraulic oil tank .....			
13A	1				1134-5965-01 • Tankdeckel .....	• Tank cap .....			
14	1				1134-6009-01 Tankkonsole.....	Tank bracket.....			
15	1				9959-0820-16 Schraube .....	Screw .....			
16	1				9739-0831-22 Mutter .....	Nut .....			
17	1				9945-0816-16 Schraube .....	Screw .....			
18	1				1134-6030-01 Tankbügel .....	Tank loop .....			
19	2				9747-0631-02 Mutter .....	Lock nut .....			
20	3				9578-0023-04 Schlauchklemme .....	Hose clamp .....			
21	1				1134-2779-08 Schlauch.....	Tube .....			L = 165 mm
30	1				1134-6162-01 Halterung .....	Bracket.....			
31	2				9939-0612-16 Schraube .....	Screw .....			
32	2				9699-0025-02 Scheibe.....	Washer.....			
33	1				1134-6163-01 Draht .....	Cable .....			
34	1				9997-0835-12 Schraube .....	Screw .....			
35	2				9739-0831-22 Mutter .....	Nut .....			
36	1				1134-6084-01 Konsole .....	Control bracket .....			
37	1				1134-6083-01 Regulierstange.....	Control rod.....			
38	1				1134-4014-01 Plastikknopf.....	Plastic button .....			
39	1				1134-2790-01 Gummihülse .....	Rubber grommet.....			
40	1				9675-0009-02 Verriegelungsscheibe .....	Starlock .....			
50	1				1134-4015-01 Zugstange.....	Pull rod .....			
51	1				1134-4014-01 Plastikknopf.....	Plastic button .....			
52	1				1134-4713-01 Winkel .....	Bracket.....			
53	1				1134-2790-01 Gummihülse .....	Rubber grommet.....			
54	1				9959-0820-16 Schraube .....	Screw .....			
55	1				9739-0831-22 Mutter .....	Nut .....			
56	1				9675-0009-02 Verriegelungsscheibe .....	Starlock .....			

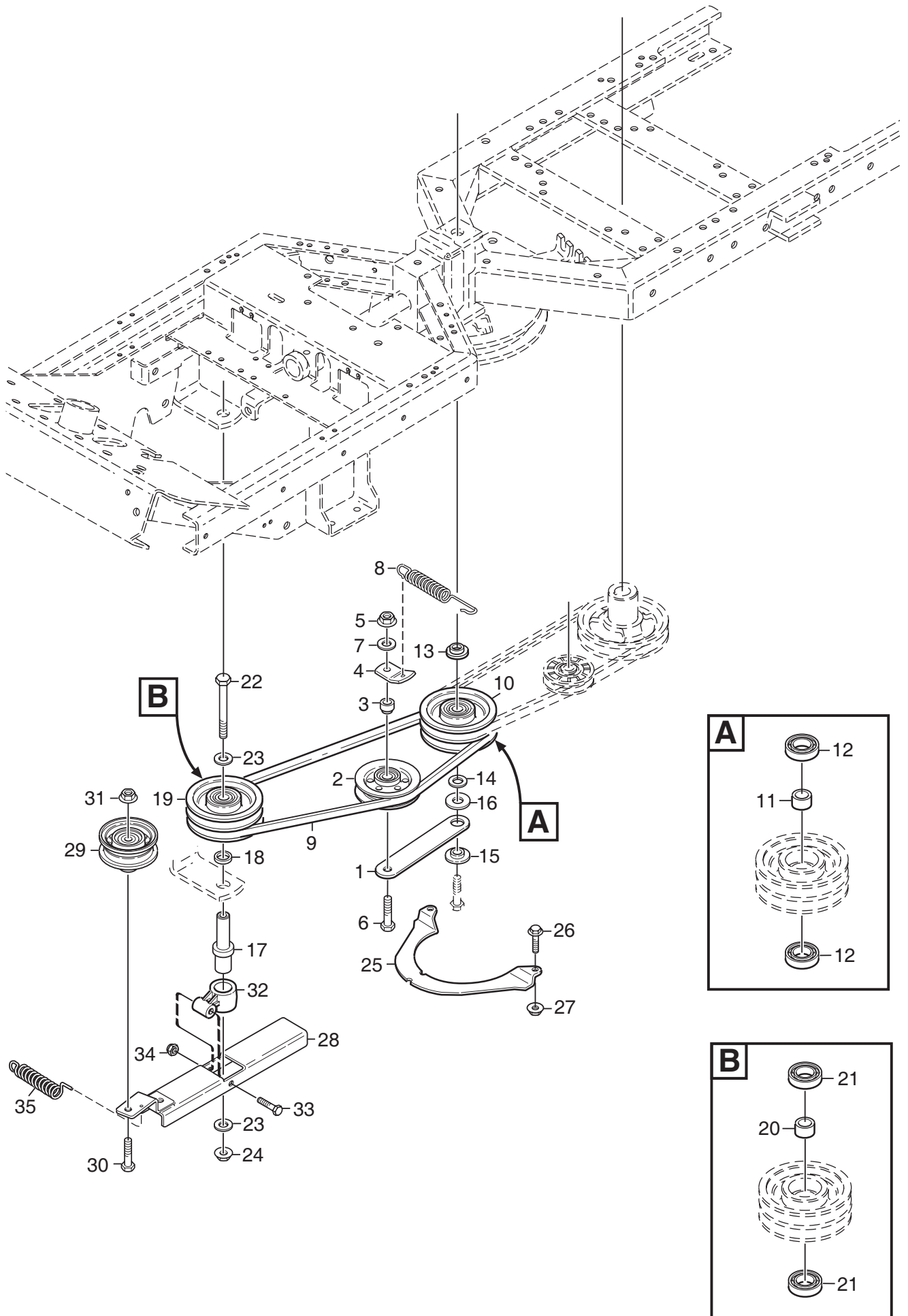


Ausgabe Issue 2008-31		Bild Nr Picture No C157		XK4 160HD RÄDER 4WD		XK4 160HD WHEELS 4WD		Seite Page 110	
Pos. Fig.	Anzahl/Quantity				Artikel Nr. Part No	Bezeichnung	Description	Satz Kit	Anmerkung Notes
	6104								
1	2				1134-4844-03 Radnabe .....	Wheel hub .....			
2	2				1134-3383-02 Keil .....	Key .....			
3	2				1134-4558-01 Felge .....	Rim .....			
4	2				9545-0116-00 Reifen .....	Tyre .....			16 x 7.50 - 8
5	2				9545-0500-00 Ventil .....	Valve .....			
6	6				9731-1031-22 Mutter .....	Nut .....			
9	4				1134-5797-01 Scheibe .....	Washer .....			
10	2				9653-0002-04 Schließring .....	Lock ring .....			
11	2				1134-5886-01 Geräthalter Kpl. ....	Tool attachment assy .....			
12	2				1134-5686-01 • Lagerbuchse .....	• Bearing bush .....			
13	1				9501-0502-00 • Schmiernippel .....	• Grease joint .....			
21	2				1134-4844-02 Radnabe .....	Wheel hub .....			
22	2				1134-2471-01 Keil .....	Key .....			
23	2				1134-4558-01 Felge .....	Rim .....			
24	2				9545-0116-00 Reifen .....	Tyre .....			16 x 7.50 - 8
25	2				9545-0500-00 Ventil .....	Valve .....			
26	6				9731-1031-22 Mutter .....	Nut .....			
29	2				9699-0042-02 Scheibe .....	Flat washer .....			
30	2				9653-0001-04 Schließring .....	Lock ring .....			
31	2				1134-4796-01 Nabenkapsel .....	Hub cap .....			
32	2				9947-0540-19 Schraube .....	Screw .....			
99					9545-0203-00 Innenschlauch .....	Inner tube .....			Only as spare part

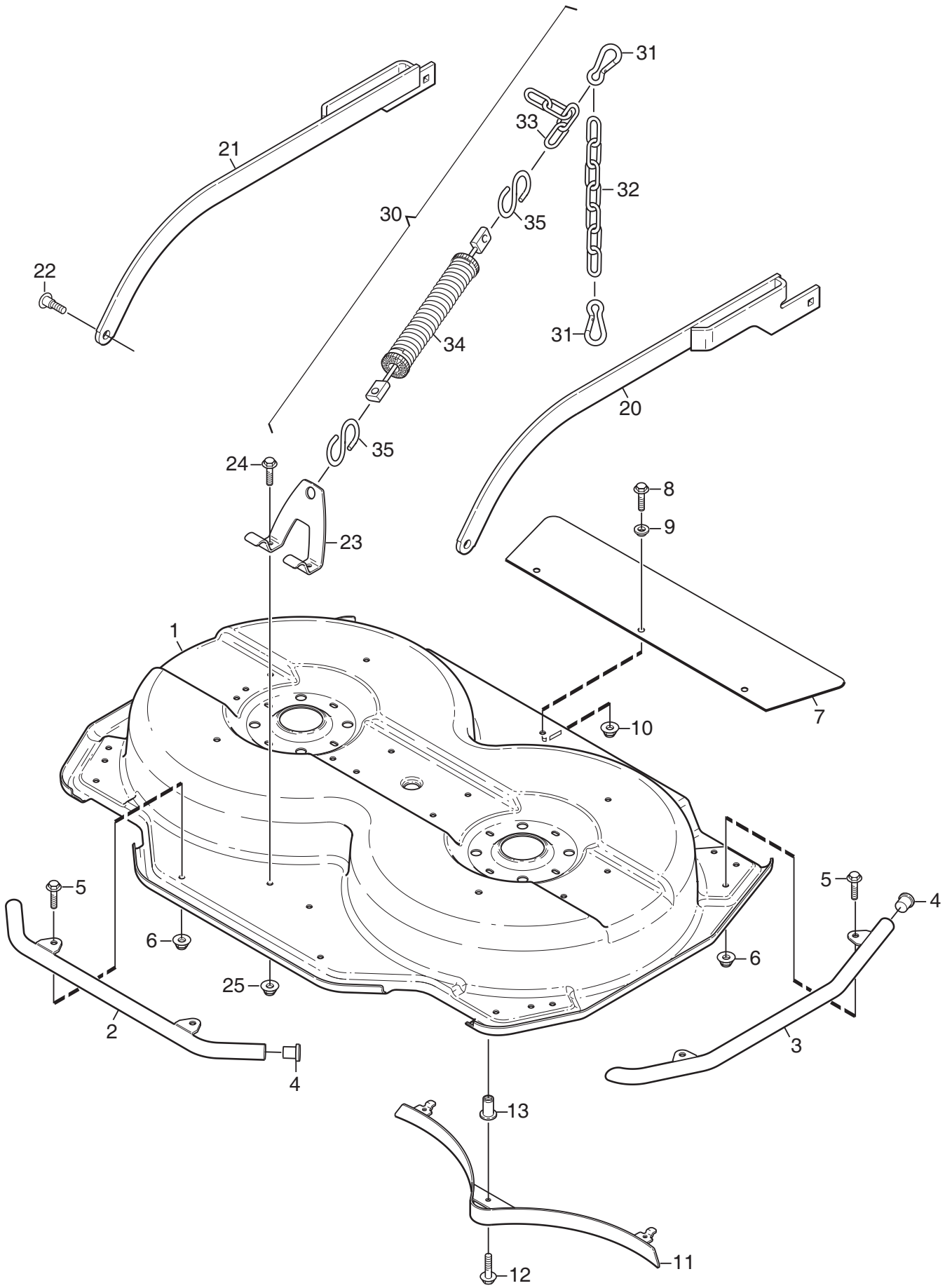




Ausgabe Issue 2008-31		Bild Nr Picture No C159		XK4 160HD NEBENANTRIEB 4WD		XK4 160HD POWER TAKE- OFF 4WD		Seite Page 114	
Pos. Fig.	Anzahl/Quantity				Artikel Nr. Part No	Bezeichnung	Description	Satz Kit	Anmerkung Notes
	6104								
1	1				1134-2018-02	Spannarm .....	Tension arm .....		
2	1				1134-2989-02	Spannrolle- grau .....	Tension roller- grey .....		
3	1				9585-0129-01	Keilriemen .....	V- belt .....		
4	1				9997-1030-16	Schraube .....	Screw .....		
5	1				9799-1031-02	Mutter .....	Nut .....		
6	1				1134-4162-01	Bremsstange .....	Brake rod .....		
7	1				9675-0008-02	Verriegelungsscheibe .....	Locking washer .....		
8	1				1134-4170-01	Nippel .....	Nipple .....		
9	1				1134-4111-01	Bremsarm .....	Brake arm .....		
10	1				1134-4164-03	Bremsklotz .....	Brake pad .....		
11	2				9699-0035-02	Scheibe .....	Flat washer .....		
12	1				9897-0825-16	Schraube .....	Screw .....		
13	1				9747-0831-02	Mutter .....	Lock nut .....		
14	1				9699-0090-02	Scheibe .....	Flat washer .....		
15	1				9699-0025-02	Scheibe .....	Washer .....		
16	1				9747-0631-02	Mutter .....	Lock nut .....		
17	1				4231-0013-00	Feder .....	Spring .....		
18	1				1134-4231-01	Zugfeder .....	Spring .....		
19	1				1134-1565-10	Distanz .....	Spacer .....		
20	1				9997-0860-16	Schraube .....	Screw .....		
21	1				9699-0056-02	Scheibe .....	Flat washer .....		
22	1				9739-0831-22	Mutter .....	Nut .....		
23	1				1134-4163-01	Ansatzschraube .....	Shoulder bolt .....		
24	1				9699-0035-02	Scheibe .....	Flat washer .....		
25	1				9739-1031-22	Mutter .....	Nut .....		
26	1				1134-3958-01	Riemenführung .....	Belt guide .....		
27	2				9893-0616-16	Schraube .....	Screw .....		
28	1				1134-0041-03	Hülse .....	Collar .....		
29	1				9997-1070-12	Schraube .....	Screw .....		
30	1				9739-1031-22	Mutter .....	Nut .....		

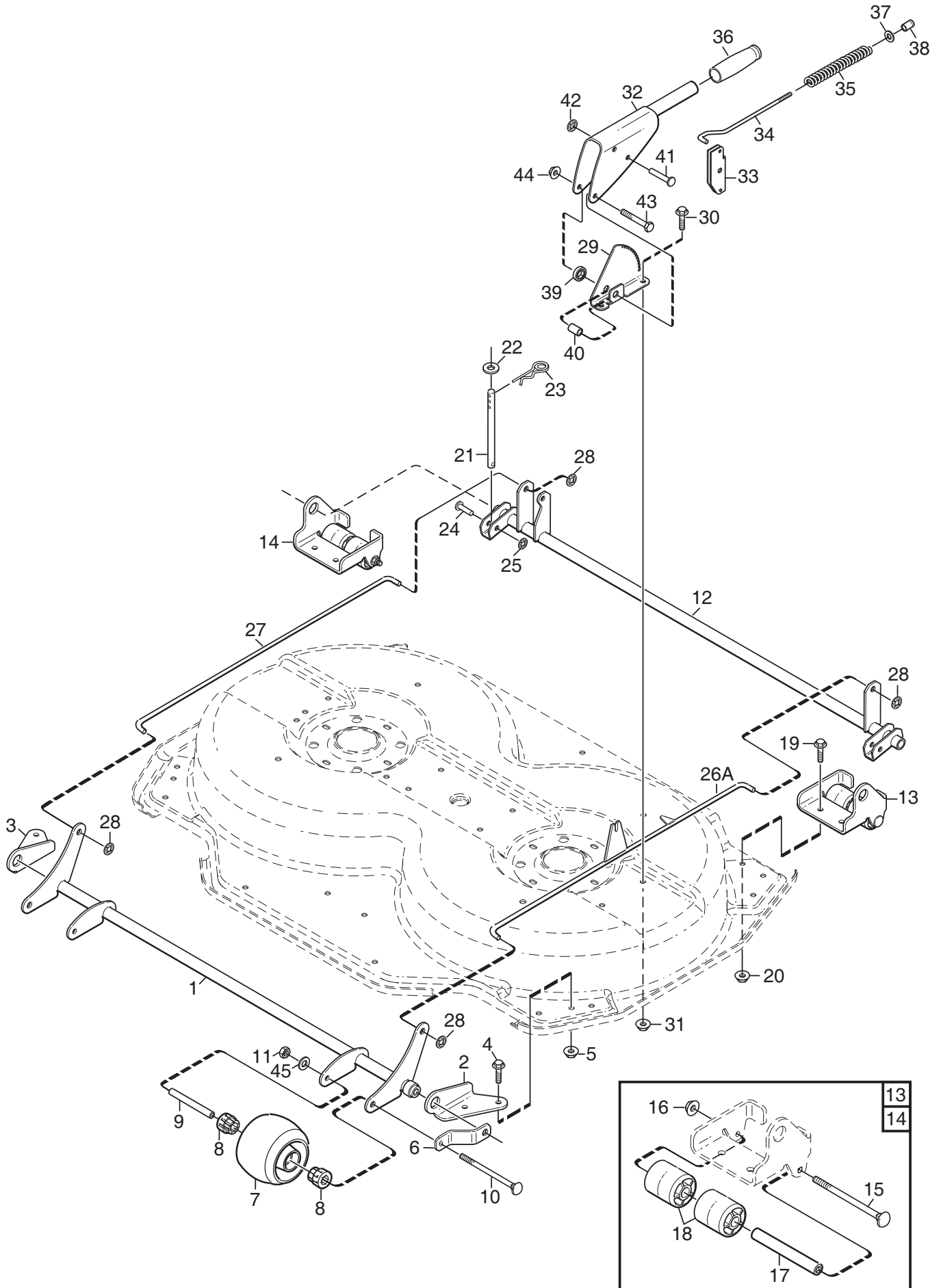


Ausgabe Issue 2008-31		Bild Nr Picture No C160		XK4 160HD NEBENANTRIEB 4WD		XK4 160HD POWER TAKE- OFF 4WD		Seite Page 116	
Pos. Fig.	Anzahl/Quantity				Artikel Nr. Part No	Bezeichnung	Description	Satz Kit	Anmerkung Notes
	6104								
1	1				1134-1730-01	Spannradarm.....	Tension wheel arm.....		
2	1				1134-3663-01	Spannrolle.....	Tension wheel.....		
3	1				1134-1888-05	Distanz.....	Spacer.....		
4	1				1134-1893-01	Federhalterung.....	Spring attachment.....		
5	1				9739-1031-22	Mutter.....	Nut.....		
6	1				9997-1060-12	Schraube.....	Screw.....		
7	1				9699-0035-02	Scheibe.....	Flat washer.....		
8	1				1134-5713-01	Zugfeder.....	Spring.....		
9	1				9585-0148-01	Keilriemen.....	V-belt.....		
10	1				1134-1769-03	Riemenscheibe Kpl.....	Centre pulley assy.....		
11	1				1134-0051-09	• Distanz.....	• Spacer.....		
12	2				9549-0019-00	• Kugellager.....	• Ball bearing.....		
13	1				1134-5548-01	Distanz.....	Spacer.....		
14	1				9699-0035-02	Scheibe.....	Flat washer.....		
15	1				1134-0222-00	Spannradscheibe.....	Washer.....		
16	1				9699-0109-02	Scheibe.....	Flat washer.....		
17	1				1134-5663-01	Achse.....	Shaft.....		
18	1				1134-0052-00	Lagerdistanz.....	Bearing spacer.....		
19	1				1134-1769-03	Riemenscheibe Kpl.....	Centre pulley assy.....		
20	1				1134-0051-09	• Distanz.....	• Spacer.....		
21	2				9549-0019-00	• Kugellager.....	• Ball bearing.....		
22	1				9997-1011-06	Schraube.....	Screw.....		
23	2				9699-0030-02	Scheibe.....	Flat washer.....		
24	1				9739-1031-22	Mutter.....	Nut.....		
25	1				1134-3654-01	Fingerschutz.....	Finger guard.....		
26	2				9959-0612-16	Schraube.....	Screw.....		
27	2				9739-0631-22	Mutter.....	Nut.....		
28	1				1134-5660-01	Spannarm.....	Tension arm.....		
29	1				1134-5823-01	Spannrolle.....	Tension roller.....		
30	1				9997-1050-16	Schraube.....	Screw.....		
31	1				9739-1031-22	Mutter.....	Nut.....		
32	1				1134-6314-01	Halterung.....	Attachment.....		
33	1				9997-0645-12	Schraube.....	Screw.....		
34	1				9747-0631-02	Mutter.....	Lock nut.....		
35	1				1134-5824-01	Feder.....	Spring.....		



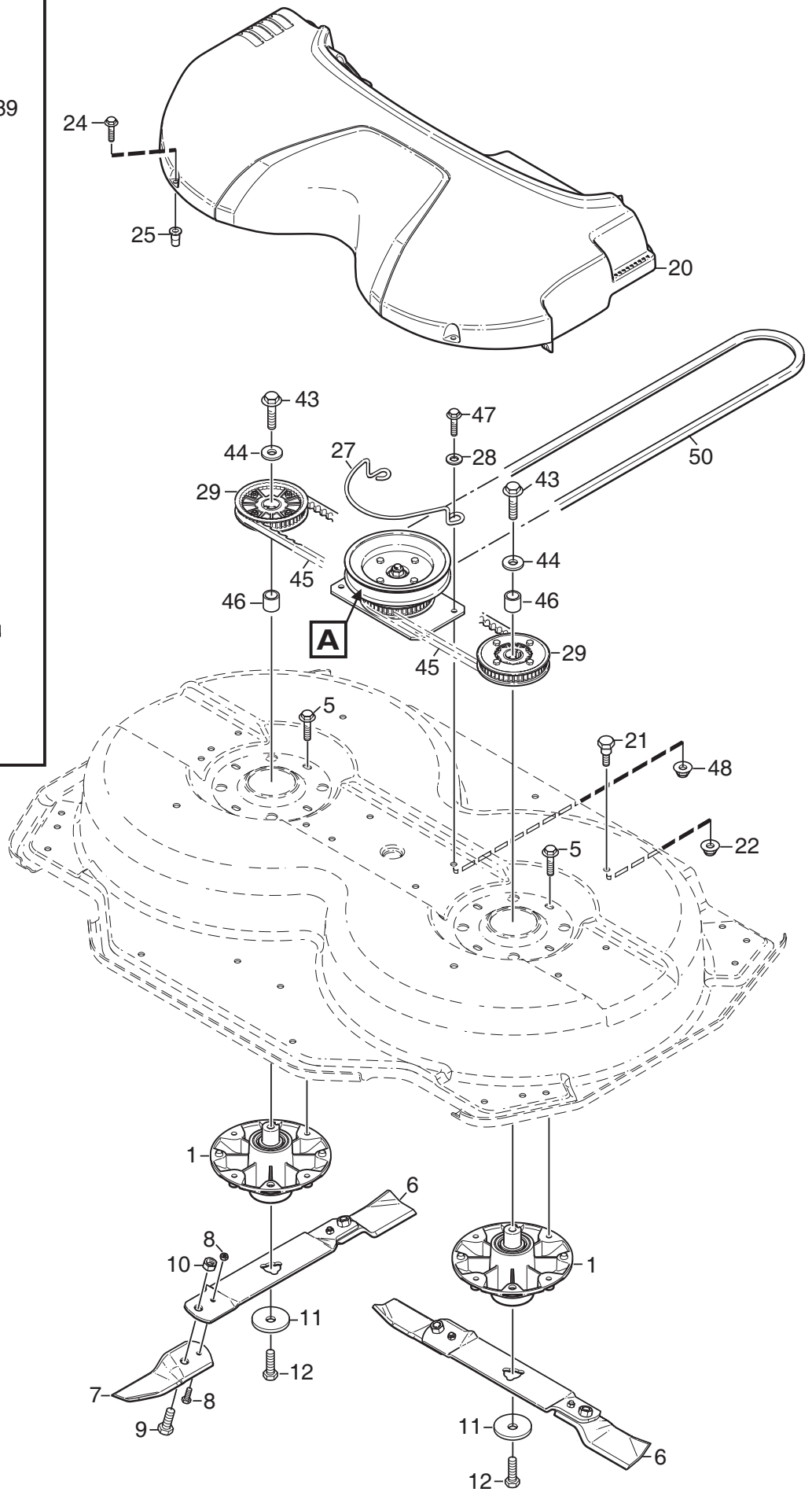
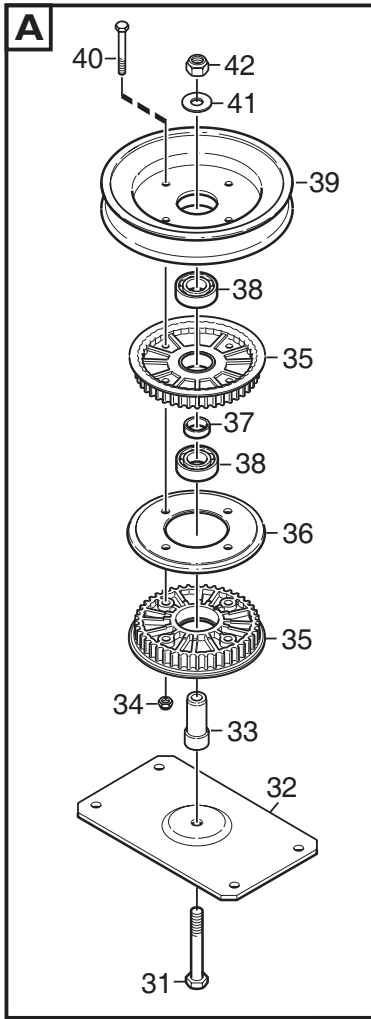
Ausgabe Issue 2008-31		Bild Nr Picture No C130		XK MÄHWERK 105C RAHMEN		XK MOWER DECK 105C FRAME		Seite Page 124		
Pos. Fig.	Anzahl/Quantity				Artikel Nr. Part No	Bezeichnung	Description	Satz Kit	Anmerkung Notes	
	2972									
1	1				1134-6191-03	Haube- rot.....	Casing- red.....		Pos 13 incl.	
2	1				1134-6208-02	Frontschutz- schwarz.....	Front guard tube- bl. ....			
3	2				1134-6223-02	Seitenschutz- schwarz .....	Side guard tube- black .....			
4	4				9403-0025-70	Propfen- schwarz.....	End cap- black.....			
5	6				9959-0816-16	Schraube .....	Screw .....			
6	6				9739-0831-22	Mutter .....	Nut .....			
7	1				1134-6281-03	Gummischutz .....	Rubber guard .....			
8	3				9959-0816-16	Schraube .....	Screw .....			
9	3				1134-4185-01	Flanschscheibe .....	Flange washer .....			
10	3				9739-0831-22	Mutter .....	Nut .....			
11	1				1134-6231-01	Mulchpropfen .....	Mulching plug .....			
12	1				9959-0816-16	Schraube .....	Screw .....			
13	1				1134-5595-01	• Nietmutter.....	• Riveting nut.....			
20	1				1134-6237-07	Mähwerkarm- L, schw .....	Deck arm- LH, black.....			
21	1				1134-6237-08	Mähwerkarm- R, schw.....	Deck arm- RH, black .....			
22	2				1134-6279-01	Schulter-schraube.....	Shoulder bolt .....			
23	1				1134-6315-02	Hebehalter- schw .....	Lift bracket- black.....			
24	2				9959-0816-16	Schraube .....	Screw .....			
25	2				9739-0831-22	Mutter .....	Nut .....			
30	1				1134-6362-01	Hebefeder kpl .....	Lift spring assy .....			
31	2				1134-5528-01	• Karabinerhaken.....	• Snap hook.....	Pos 31 - 35 incl.		
32	1				1134-6368-02	• Kette .....	• Chain .....			7 links
33	1				1134-6368-01	• Kette .....	• Chain .....			4 links
34	1				1134-6365-03	• Hebefeder .....	• Lift spring.....			
35	2				1134-4623-01	• S- Haken .....	• S- hook.....			
99	1				8211-7080-81	Bedienungsanleitung .....	Owner's manual .....			Not ill.

X



Ausgabe Issue 2008-31		Bild Nr Picture No C131		XK MÄHWERK 105C REGULIERUNGEN		XK MOWER DECK 105C CONTROLS		Seite Page 126	
Pos. Fig.	Anzahl/Quantity				Artikel Nr. Part No	Bezeichnung	Description	Satz Kit	Anmerkung Notes
	2972								
1	1				1134-6275-02	Vorderachse- schwarz .....	Front axle- black.....		
2	1				1134-6215-03	Halter- L, schwarz.....	Bracket fr- LH, black.....		
3	1				1134-6215-04	Halter- R, schwarz .....	Bracket fr- RH, black .....		
4	4				9959-0816-16	Schraube .....	Screw .....		
5	4				9739-0831-22	Mutter .....	Nut .....		
6	2				1134-6278-02	Leitblech- schwarz.....	Guide- black .....		
7	2				1134-4284-01	Rad .....	Wheel.....		
8	4				1134-4319-01	Lager .....	Bearing.....		
9	2				1134-4318-01	Radachse.....	Wheel axle.....		
10	2				9897-0813-02	Schraube .....	Screw.....		
11	2				9747-0831-02	Mutter.....	Lock nut.....		
12	1				1134-6197-02	Hinterachse- schwarz .....	Rear axle- black .....		
13	1				1134-6282-01	Rollen- L, m.Halter.....	Roller- LH, w/bracket .....		Pos 15 - 18 incl.
14	1				1134-6282-02	Rollen- R, m.Halter .....	Roller- RH, w/bracket.....		Pos 15 - 18 incl.
15	1				9897-0813-02	• Schraube .....	• Screw .....		
16	1				9739-0831-22	• Mutter .....	• Nut .....		
17	1				1134-4318-01	• Radachse.....	• Wheel axle.....		
18	2				1134-6206-01	• Rollen .....	• Roller .....		
19	4				9959-0816-16	Schraube .....	Screw.....		
20	4				9739-0831-22	Mutter .....	Nut .....		
21	2				1134-6198-01	Stange .....	Stud .....		
22	2				9699-0104-02	Scheibe.....	Washer.....		
23	2				9598-2001-02	Schließnadel .....	Spring pin .....		
24	2				9646-0098-22	Niet.....	Rivet.....		
25	2				9675-0012-02	Verriegelungsscheibe .....	Locking washer.....		
26 A	1				1134-6249-01	Druckstange- L .....	Push rod- LH.....		
27	1				1134-6246-01	Druckstange- R.....	Push rod- RH .....		
28	4				9675-0015-02	Verriegelungsscheibe .....	Lock washer.....		
29	1				1134-6255-01	Höhenverstellsektor.....	Height adj. quadrant.....		
30	2				9959-0816-16	Schraube .....	Screw.....		
31	2				9739-0831-22	Mutter .....	Nut .....		
32	1				1134-6244-02	Höhenverst.hebel- schw .....	Height adj.lever- bl. ....		
33	1				1134-6254-01	Sperre.....	Catch.....		
34	1				1134-5444-01	Druckstange .....	Push rod .....		
35	1				1134-5445-01	Feder .....	Spring .....		
36	1				1134-5503-01	Griff .....	Handle.....		
37	1				9699-0087-02	Scheibe.....	Flat washer.....		
38	1				1134-3051-01	Sperrknopf.....	Locking knob .....		
39	1				1134-6286-03	Distanz.....	Spacer.....		
40	1				1134-1565-16	Distanz.....	Spacer.....		
41	2				9646-0105-22	Niet.....	Rivet.....		
42	2				9672-0006-02	Verriegelungsscheibe .....	Lock washer .....		
43	1				9997-0850-16	Schraube .....	Screw.....		
44	1				9747-0831-02	Mutter.....	Lock nut.....		
45	2				9699-0028-02	Scheibe.....	Flat washer.....		





Ausgabe Issue 2008-31		Bild Nr Picture No C132		XK MÄHWERK 105C TRANSMISSION		XK MOWER DECK 105C TRANSMISSION		Seite Page 128	
Pos. Fig.	Anzahl/Quantity			Artikel Nr. Part No	Bezeichnung	Description	Satz Kit	Anmerkung Notes	
	2972 -42 -82	2972 -52 -72							
1	2	2		1134-5831-01	Lagerbuchse kpl .....	Bearing box assy.....			
5	8	8		9945-0825-16	Schraube .....	Screw .....			
6	2	2		1134-6240-03	Messer kpl.....	Blade bar assy.....		Pos 7 incl.	
7	1	1		1134-9119-01	• Messersatz .....	• Blade kit .....		Pos 8 - 10 incl.	
8	1	1		1134-9054-01	•• Scherbolzensatz.....	•• Shear bolt kit.....			
9	2	2		1134-6311-01	•• Bolt .....	•• Bolt.....		7/16" UNF	
10	2	2		1134-6312-01	•• Schloßmutter .....	•• Lock nut .....		7/16" UNF	
11	2	2		1134-6211-01	Messerscheibe.....	Blade washer.....			
12	2	2		9997-1060-12	Schraube .....	Screw.....			
20	1	1		1134-6280-03	Deckel- grau.....	Transm.cover- grey .....			
21	2	2		1134-0240-01	Schulter-schraube.....	Shoulder screw .....			
22	2	2		9739-0831-22	Mutter .....	Nut .....			
24	2	2		9945-0825-16	Schraube .....	Screw .....			
25	2	2		1134-5595-01	Nietmutter .....	Riveting nut.....			
27	1	1		1134-6431-01	Riemenführung.....	Belt guide .....			
28	2	2		9699-0090-02	Scheibe.....	Flat washer.....			
29	2	2		1134-6287-01	Zahnriemenscheibe .....	Toothed belt pulley .....			
31	1	1		9997-1065-12	Schraube .....	Screw .....			
32	1	1		1134-6209-01	Halterung.....	Bracket .....			
33	1	1		1134-6205-01	Achse.....	Shaft .....			
34	4	4		9747-0631-02	Mutter .....	Lock nut .....			
35	2	2		1134-6186-01	Zahnriemenscheibe .....	Toothed belt pulley .....			
36	1	1		1134-6188-01	Distanzplatte.....	Spacer plate .....			
37	1	1		1134-3725-05	Distanz.....	Spacer.....			
38	2	2		9549-0019-00	Kugellager .....	Ball bearing .....			
39	1	1		1134-6204-01	Riemenscheibe .....	Belt pulley .....		Ø = 168 mm	
40	4	4		9997-0650-12	Schraube .....	Screw .....			
41	1	1		9699-0030-02	Scheibe.....	Flat washer.....			
42	1	1		9747-1031-02	Mutter .....	Lock nut .....			
43	2	2		9997-1060-12	Schraube .....	Screw .....			
44	2	2		1134-5406-01	Scheibe.....	Washer.....			
45	2	2		9585-0165-01	Zahnriemen .....	Toothed belt .....			
46	2	2		1134-5400-04	Distanz.....	Spacer.....			
47	4	4		9959-0820-16	Schraube .....	Screw .....			
48	4	4		9739-0831-22	Mutter .....	Nut .....			
50	1			9585-0170-01	Keilriemen .....	V- belt.....			
50		1		9585-0172-01	Keilriemen .....	V- belt.....			