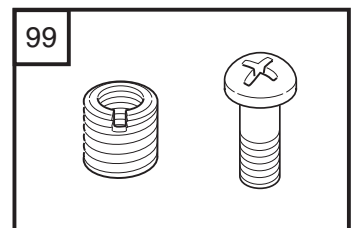
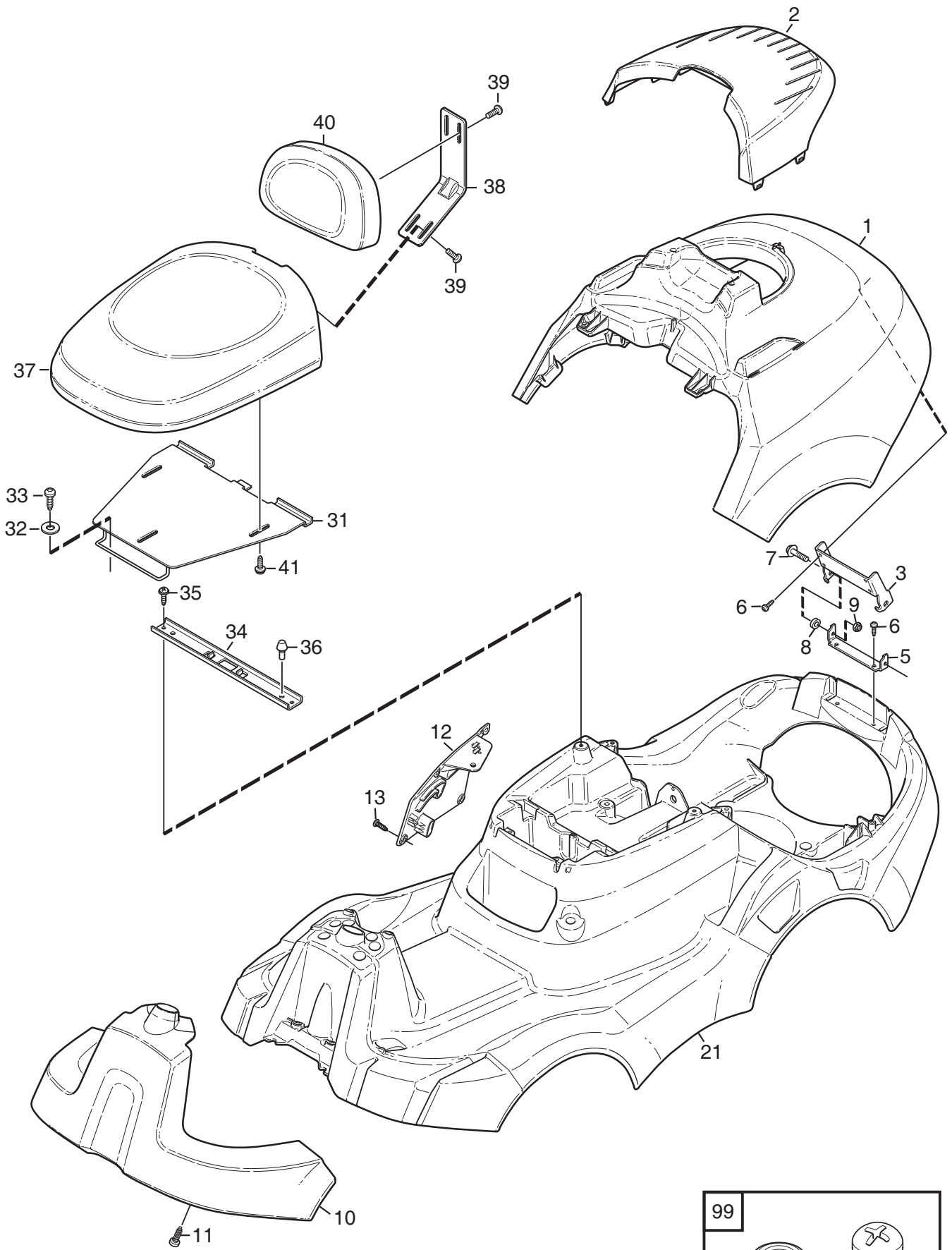
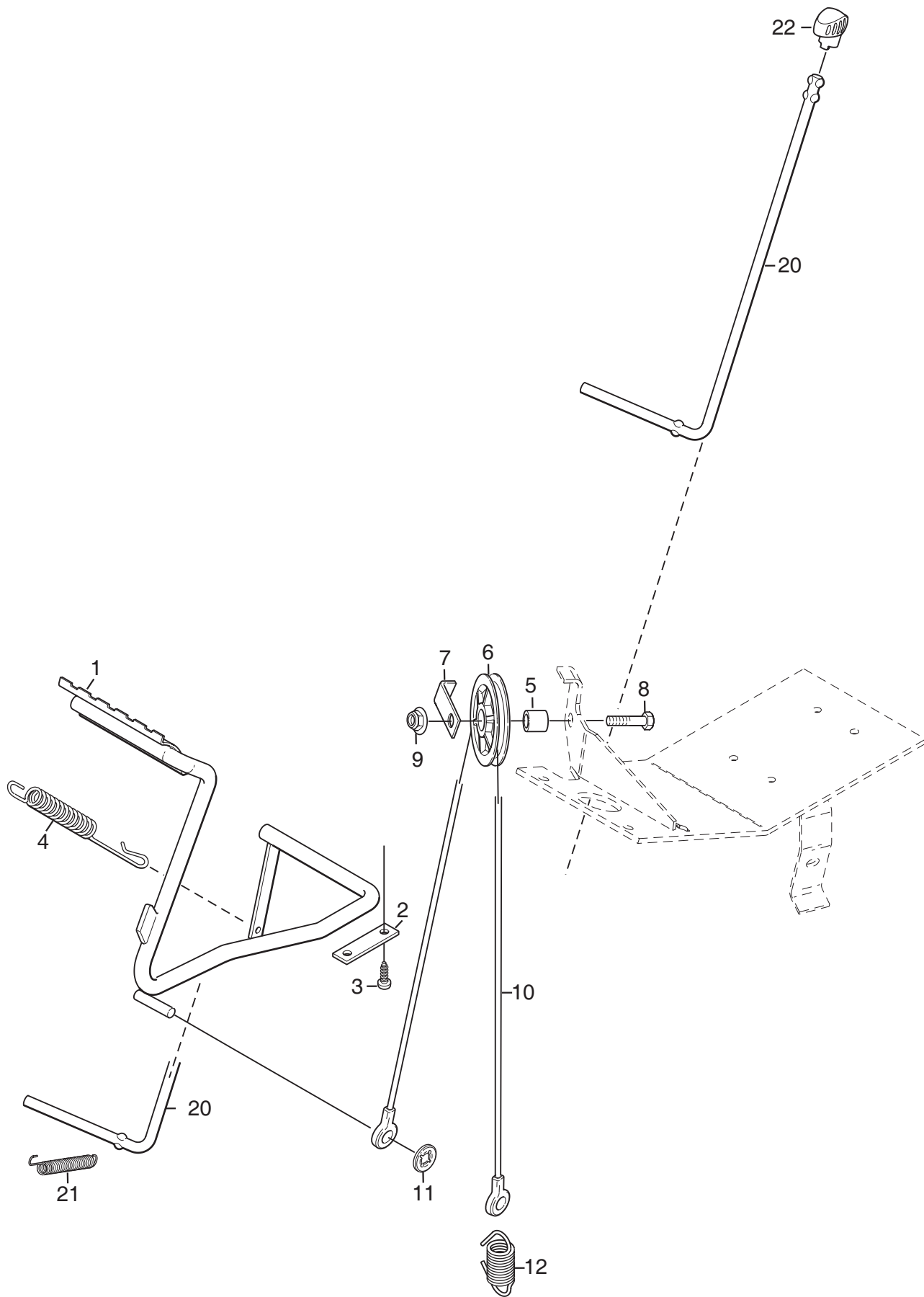


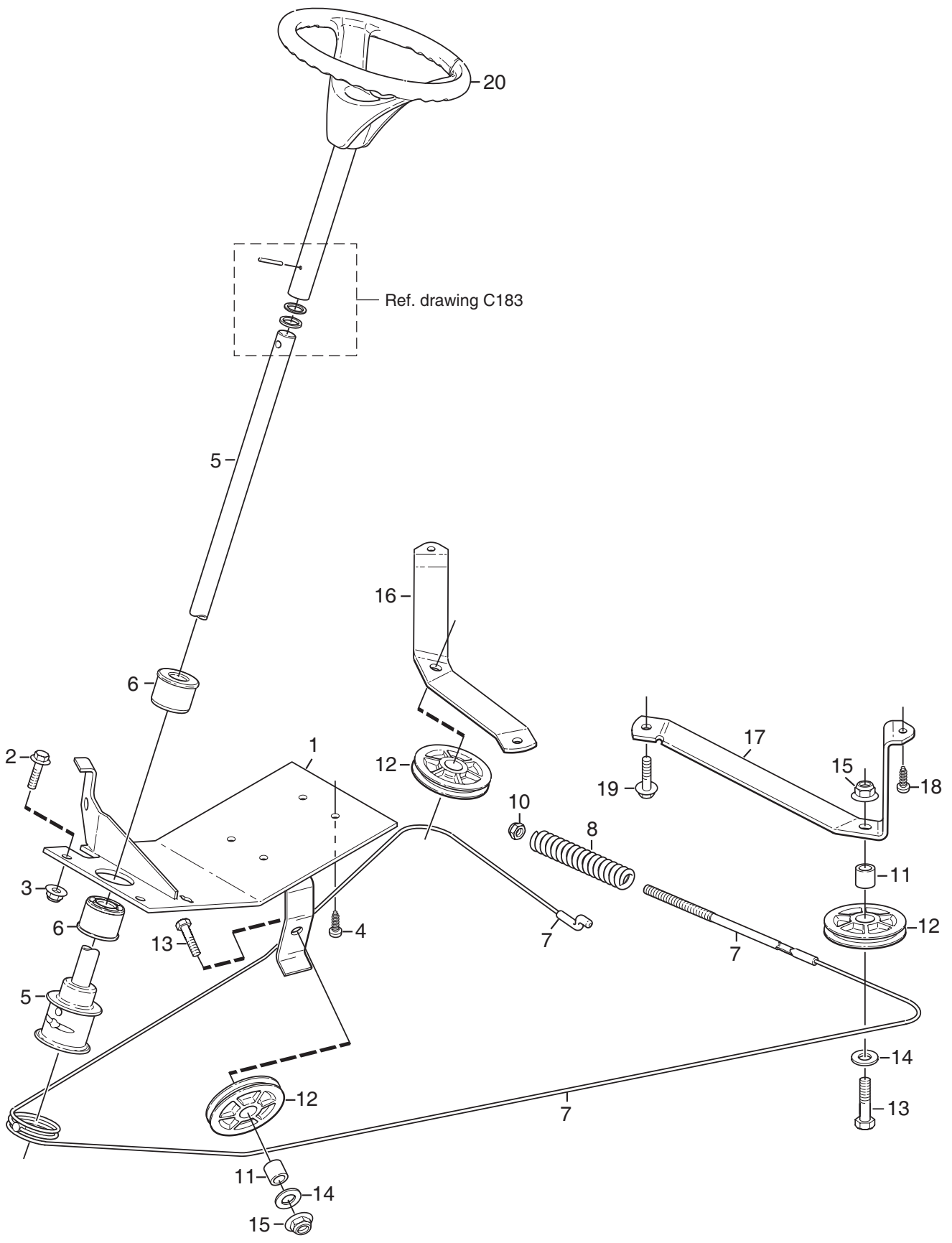
Ausgabe Issue 2008-31		Bild Nr Picture No C183		X1 MONTAGETEILEN		X1 ASSEMBLY PARTS		Seite Page 2	
Pos. Fig.	Anzahl/Quantity				Artikel Nr. Part No	Bezeichnung	Description	Satz Kit	Anmerkung Notes
	2413 -81								
X	1	1			9595-0262-00	Spannstift .....	Locating pin .....		
X	2	1			9699-0103-02	Scheibe.....	Flat washer.....		0.5 mm
X	3	1			9699-0114-02	Scheibe.....	Flat washer.....		1.0 mm
	4	1			1134-4734-01	Zündschlüssel .....	Ignition key .....		
	5	1			1134-6125-01	Zündschlüssel .....	Ignition key .....		
	6	1			1134-6113-01	Batterieschrauben.....	Battery screws .....		
	21	1			8211-0086-80	Bedienungsanleitung .....	Owner's manual .....		
	21	1			8211-0087-80	Bedienungsanleitung .....	Owner's manual .....		
	21	1			8211-0781-80	Sicherheitsvorschrift .....	Safety regulations .....		



Ausgabe Issue 2008-31		Bild Nr Picture No C184		X1 KAROSSERIE SITZ		X1 BODY WORK SEAT		Seite Page 4	
Pos. Fig.	Anzahl/Quantity				Artikel Nr. Part No	Bezeichnung	Description	Satz Kit	Anmerkung Notes
	2413 -81								
X	1	1			1134-6711-02	Motorhaube- rot.....	Engine hood- red.....		
X	2	1			1134-6712-01	Motordeckel.....	Engine cover .....		
X	3	1			1134-6583-01	Halter.....	Bracket.....		
X	5	1			1134-6584-01	Halter.....	Bracket.....		
X	6	6			9838-8822-19	Schraube .....	Screw.....		
	7	2			9959-0620-16	Schraube .....	Screw.....		
	8	2			1134-5114-01	Distanz.....	Spacer.....		
	9	2			9747-0631-02	Mutter .....	Lock nut.....		
X	10	1			1134-6708-02	Vorderdeckel- rot.....	Front cover- red.....		
X	11	2			9838-8822-19	Schraube .....	Screw.....		
X	12	1			1134-6581-03	Deckel- grau.....	PTO- cover- grey .....		
X	13	4			9838-8822-19	Schraube .....	Screw.....		
X	21	1			1134-6530-01	Chassie.....	Chassis .....		
X	31	1			1134-6740-01	Sitzplatte.....	Seat plate .....		
	32	2			9699-0056-02	Scheibe.....	Flat washer.....		
X	33	4			9838-8822-19	Schraube .....	Screw.....		
X	34	1			1134-6741-01	Schalterbefestigung.....	Switch bracket .....		
X	35	2			9838-8822-19	Schraube .....	Screw.....		
	36	2			1134-3134-01	Gummifeder.....	Rubber spring .....		
X	37	1			1134-6724-01	Sitz .....	Seat cushion .....		
X	38	1			1134-6725-01	Rückenlehnekonsole.....	Backrest bracket .....		Pos 39 (2 pcs) incl.
	39	2			9959-0820-16	Schraube .....	Screw.....		
X	40	1			1134-7022-01	Rückenlehne.....	Backrest cushion.....		
	41	3			9959-0820-16	Schraube .....	Screw.....		
X	98	1			1134-7497-01	Reparatursatz- Chassie.....	Rep.kit- chassis.....		Not ill.
X	99	1			1134-7498-01	Reparatursatz- Gewinde.....	Rep.kit- threads.....		

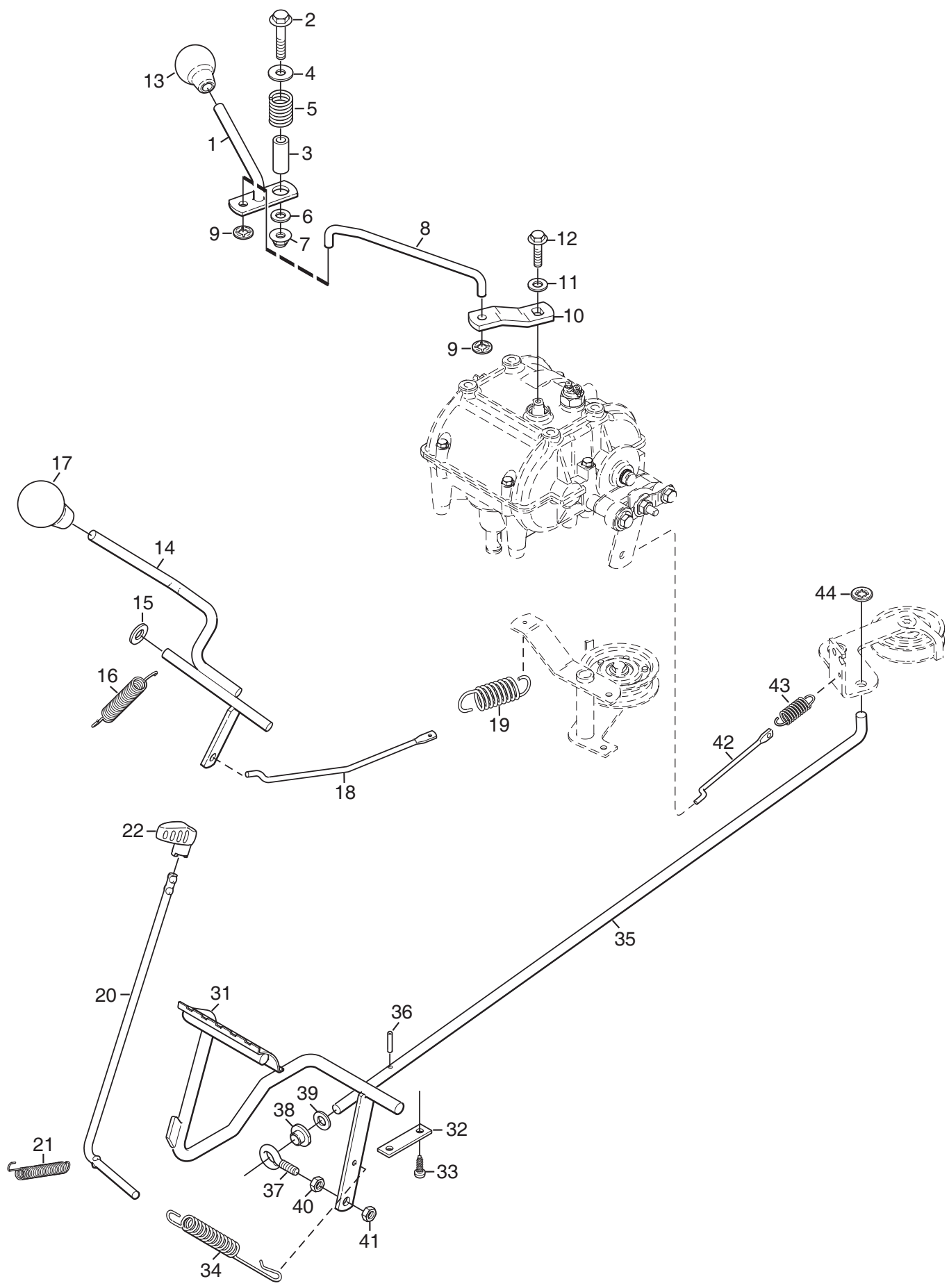


Ausgabe Issue		Bild Nr Picture No		X1 MÄHWERKHEBER		X1 MOWER DECK LIFT		Seite Page	
2008-31		C185						6	
Pos. Fig.	Anzahl/Quantity				Artikel Nr. Part No	Bezeichnung	Description	Satz Kit	Anmerkung Notes
	2413 -81								
X	1	1			1134-6529-01	Hebepedal.....	Lift pedal .....		
X	2	2			1134-6527-01	Klemme .....	Clamp.....		
X	3	5			9838-8822-19	Schraube .....	Screw.....		
	4	1			4231-0013-00	Feder .....	Spring .....		
	5	1			1134-0041-01	Hülse .....	Bushing.....		
X	6	1			1134-0072-02	Seilrolle .....	Steering pulley .....		
X	7	1			1134-0046-00	Drahthalter.....	Wire clamp.....		
	8	1			9997-1040-16	Schraube .....	Screw.....		
	9	1			9739-1031-22	Mutter .....	Nut.....		
X	10	1			1134-6565-01	Hebedraht.....	Lift wire.....		
	11	1			9675-0012-02	Verriegelungsscheibe .....	Locking washer .....		
X	12	1			1134-6536-01	Feder .....	Spring .....		
X	20	1			1134-6526-01	Pedalsperre .....	Pedal catch .....		
	21	1			1131-1497-01	Feder .....	Spring .....		
X	22	1			1134-6552-01	Sperrknopf.....	Catch button .....		



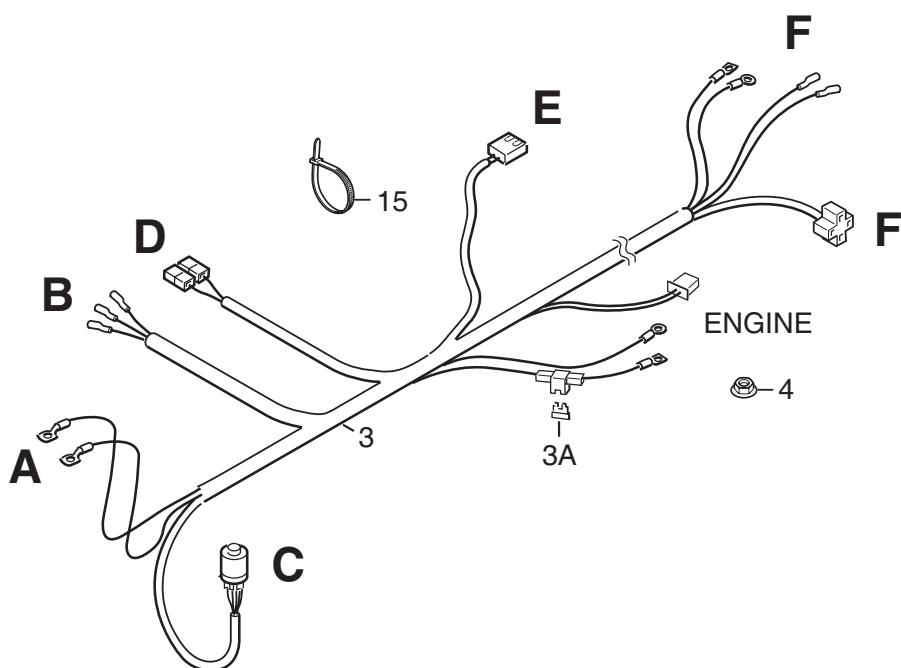
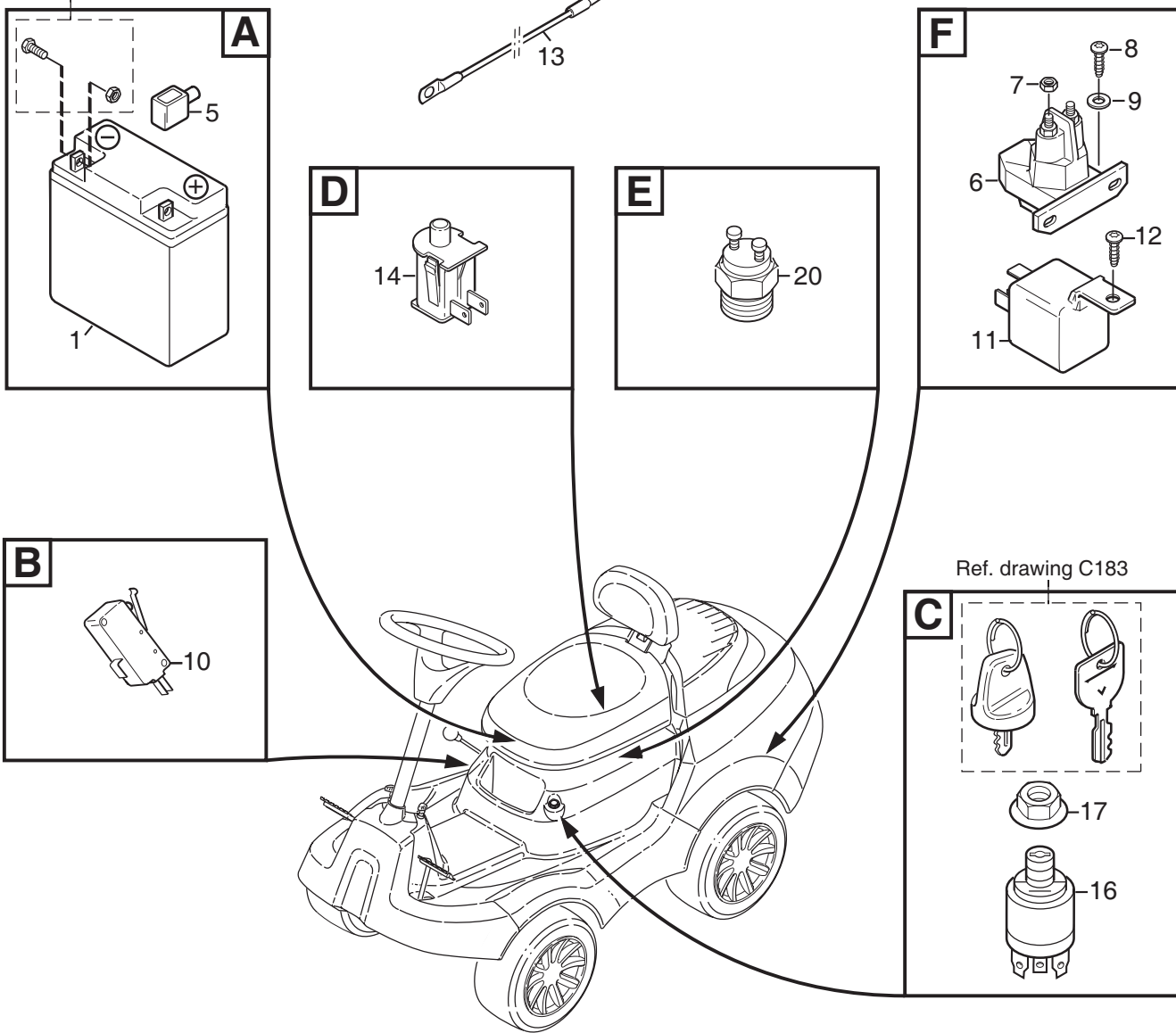
Ausgabe Issue 2008-31		Bild Nr Picture No C186		X1 LENKUNG		X1 STEERING		Seite Page 8	
Pos. Fig.	Anzahl/Quantity				Artikel Nr. Part No	Bezeichnung	Description	Satz Kit	Anmerkung Notes
	2413 -81								
X	1	1			1134-6562-01	Lenkplatte .....	Steering plate .....		
	2	2			9959-0825-16	Schraube .....	Screw .....		
	3	2			9739-0831-22	Mutter .....	Nut .....		
X	4	4			9838-8822-19	Schraube .....	Screw .....		
X	5	1			1134-6551-01	Lenkstange .....	Steering column .....		
	6	2			1134-1901-01	Lager .....	Bearing .....		
X	7	1			1134-6521-01	Lenkdrahtseil .....	Steering cable .....		
	8	1			1134-3817-01	Druckfeder .....	Compression spring .....		
	10	1			9747-0831-02	Mutter .....	Lock nut .....		
	11	4			1134-0041-01	Hülse .....	Bushing .....		
X	12	4			1134-0072-02	Seilrolle .....	Steering pulley .....		
	13	4			9997-1040-16	Schraube .....	Screw .....		
	14	4			9699-0035-02	Scheibe .....	Flat washer .....		
	15	4			9739-1031-22	Mutter .....	Nut .....		
X	16	1			1134-6490-01	Strebe- R .....	Bracket- RH .....		
X	17	1			1134-6491-01	Strebe- L .....	Bracket- LH .....		
X	18	2			9838-8822-19	Schraube .....	Screw .....		
	19	2			9945-0816-16	Schraube .....	Screw .....		
X	20	1			1134-5496-02	Lenkrad .....	Steering wheel .....		



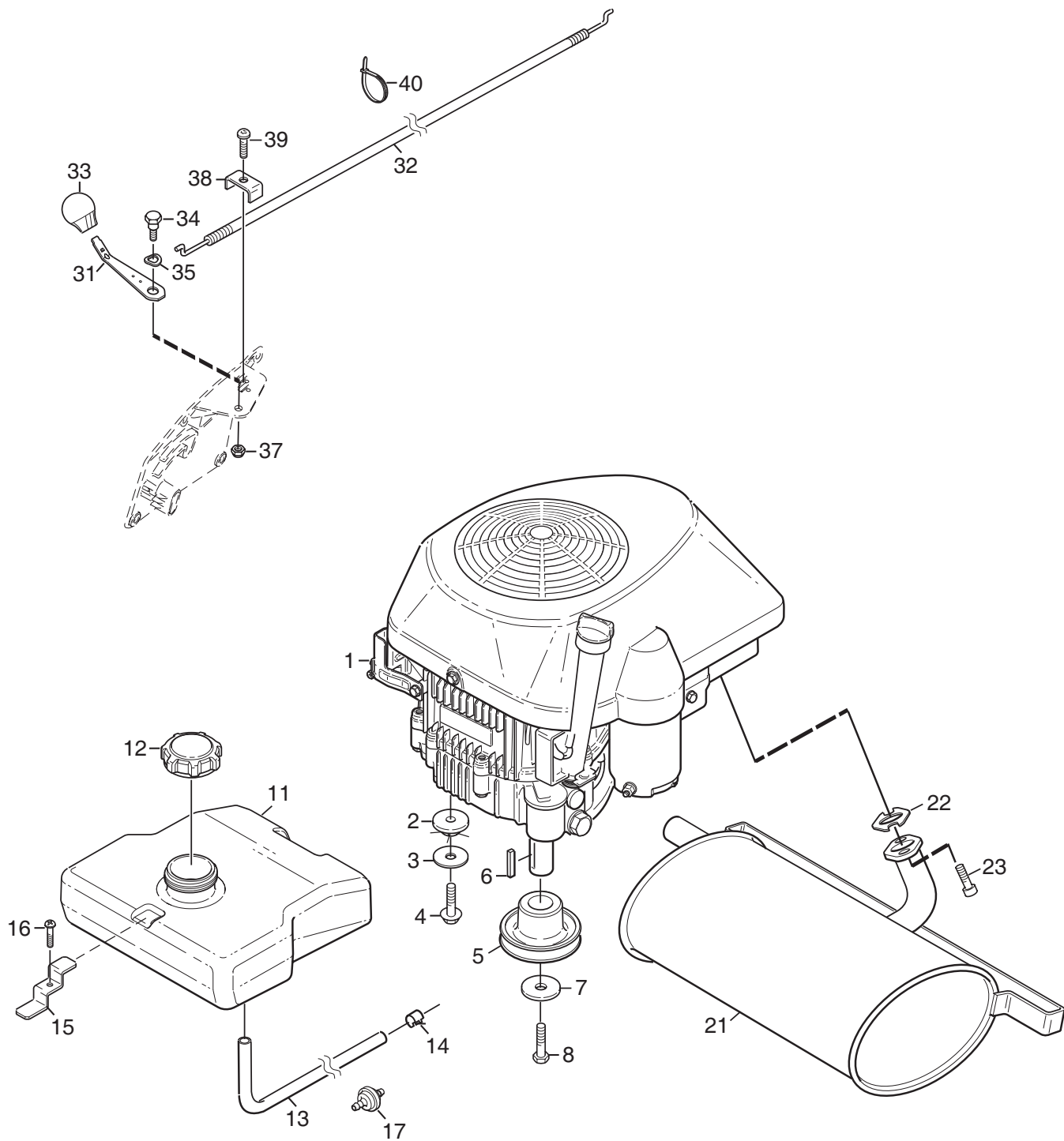


Ausgabe Issue 2008-31		Bild Nr Picture No C187		X1 BEDIENELEMENTE		X1 CONTROLS		Seite Page 10	
Pos. Fig.	Anzahl/Quantity				Artikel Nr. Part No	Bezeichnung	Description	Satz Kit	Anmerkung Notes
	2413 -81								
X	1	1			1134-6483-01	Schalthebel .....	Gear shift lever .....		
	2	1			9997-0860-16	Schraube .....	Screw .....		
X	3	1			1134-6554-01	Distanz .....	Spacer .....		
	4	1			9699-0056-02	Scheibe .....	Flat washer .....		
	5	1			1134-4079-01	Feder .....	Spring .....		
	6	1			9695-0011-00	Scheibe .....	Washer .....		
	7	1			9739-0831-22	Mutter .....	Nut .....		
X	8	1			1134-6486-01	Schaltstange .....	Gear shift rod .....		
	9	2			9675-0012-02	Verriegelungsscheibe .....	Locking washer .....		
X	10	1			1134-6482-01	Schaltarm .....	Gear shift arm .....		
	11	1			9699-0060-02	Scheibe .....	Flat washer .....		
	12	1			9987-5016-16	Schraube .....	Screw .....		
	13	1			1134-2551-01	Knopf .....	Knob .....		
X	14	1			1134-6558-01	Einkupplungshebel .....	Deck engagement lever .....		
	15	1			9699-0109-02	Scheibe .....	Flat washer .....		
X	16	1			1134-6556-01	Zugfeder .....	Spring .....		
	17	1			1134-2551-01	Knopf .....	Knob .....		
X	18	1			1134-6523-01	Stange .....	Rod .....		
	19	1			1134-4231-01	Zugfeder .....	Spring .....		
X	20	1			1134-6526-01	Pedalsperre .....	Pedal catch .....		
	21	1			1131-1497-01	Feder .....	Spring .....		
X	22	1			1134-6552-01	Sperrknopf .....	Catch button .....		
X	31	1			1134-6528-01	Kupplungspedal .....	Clutch pedal .....		
X	32	2			1134-6527-01	Klemme .....	Clamp .....		
X	33	5			9838-8822-19	Schraube .....	Screw .....		
	34	1			4231-0013-00	Feder .....	Spring .....		
X	35	1			1134-6509-01	Kupplungsstange .....	Clutch rod .....		
	36	1			9595-0208-00	Spannstift .....	Locating pin .....		
	37	1			1134-2138-01	Schrauböse .....	Eye bolt .....		
	38	1			1134-4779-01	Plastikbuchse .....	Plastic bushing .....		
	39	1			9699-0035-02	Scheibe .....	Flat washer .....		
	40	1			9739-0831-22	Mutter .....	Nut .....		
	41	1			9747-0831-02	Mutter .....	Lock nut .....		
X	42	1			1134-6666-01	Stange .....	Rod .....		
	43	1			1134-5989-01	Feder .....	Spring .....		
	44	1			9675-0015-02	Verriegelungsscheibe .....	Lock washer .....		

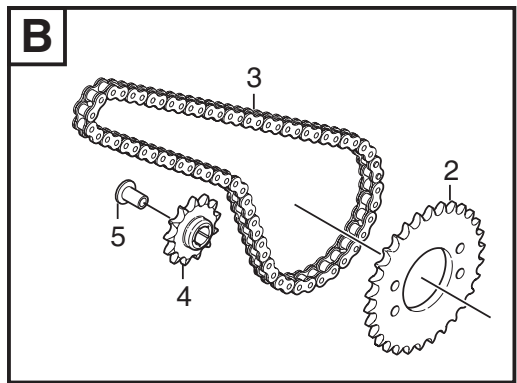
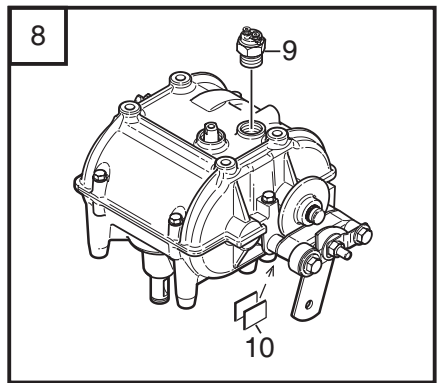
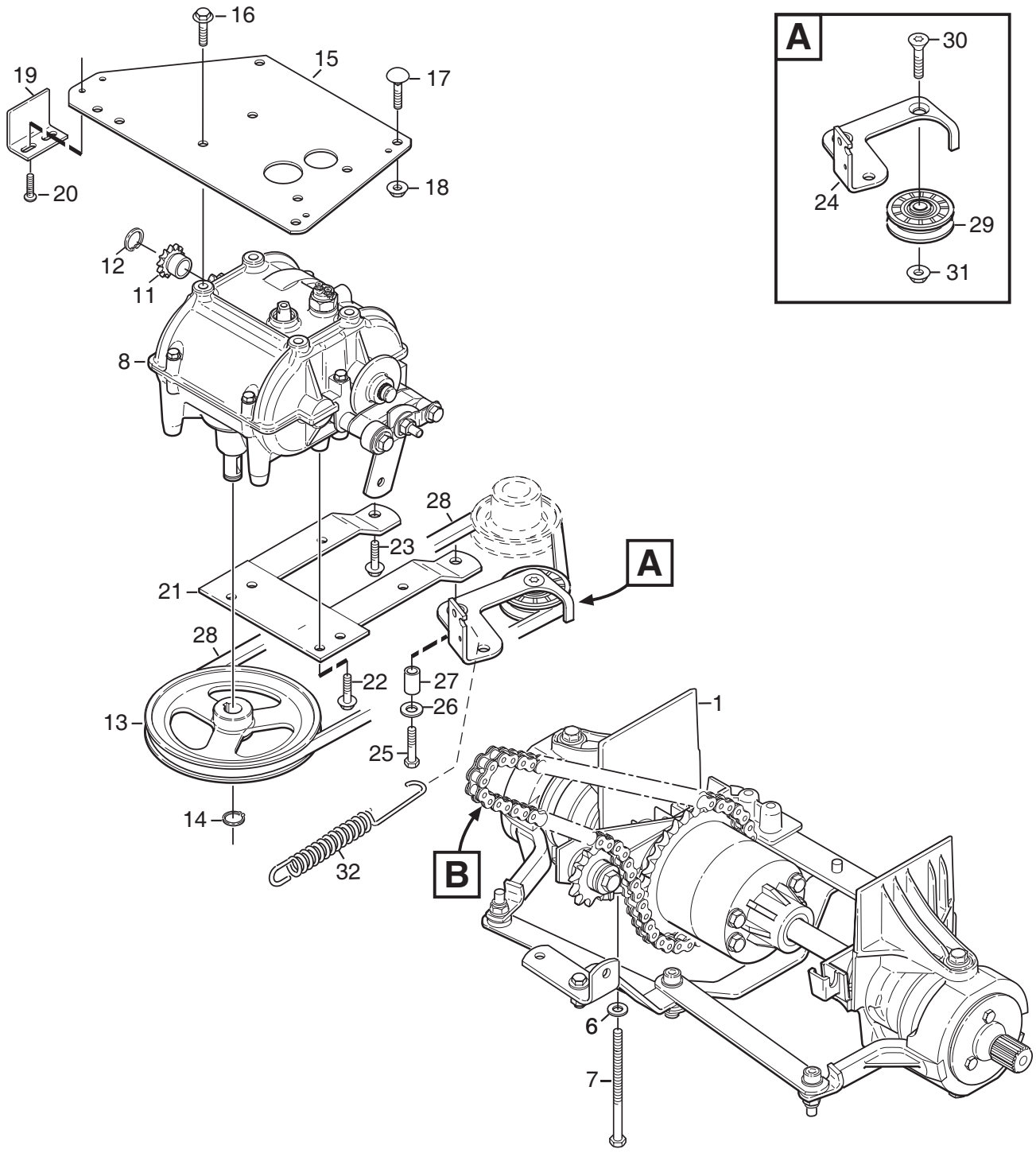
Ref. drawing C183



Ausgabe Issue		Bild Nr Picture No		X1 ELEKTRISCHES SYSTEM	X1 ELECTRIC SYSTEM	Seite Page		
2008-31		C188				12		
Pos. Fig.	Anzahl/Quantity			Artikel Nr. Part No	Bezeichnung	Description	Satz Kit	Anmerkung Notes
	2413 -81							
X	1	1		1134-6677-01	Batterie .....	Battery .....		16 Ah
X	3	1		1134-6498-01	Kabelbündel .....	Cable harness .....		
	3A	1		1134-3496-06	• Sicherung .....	• Fuse .....		20 A
	4	1		9739-0631-22	Mutter .....	Nut .....		
	5	1		1134-2310-01	Schutzkappe .....	Guard cap .....		
	6	1		1134-2962-01	Magnetschalter .....	Solenoid assy .....		
	7	2		9794-5131-02	• Mutter .....	• Nut .....		
	8	1		9838-9516-12	Schraube .....	Screw .....		
	9	1		9699-0056-02	Scheibe .....	Flat washer .....		
	10	1		9400-0312-01	Schalter .....	Micro switch .....		
	11	1		1134-2871-03	Relais .....	Relay .....		
	12	1		9838-9516-12	Schraube .....	Screw .....		
	13	1		1134-4702-01	Kabel- rot .....	Cable- red .....		
	14	1		1134-3156-02	Schalter (grau) .....	Switch (grey) .....		
	15	6		9579-0003-00	Kabelhalter .....	Cable holder .....		
	16	1		1134-4093-01	Zündschloß .....	Ignition switch .....		
	17	1		1134-4749-01	Mutter .....	Nut .....		
X	20	1		1134-7381-01	Schalter .....	Switch- neutral .....		

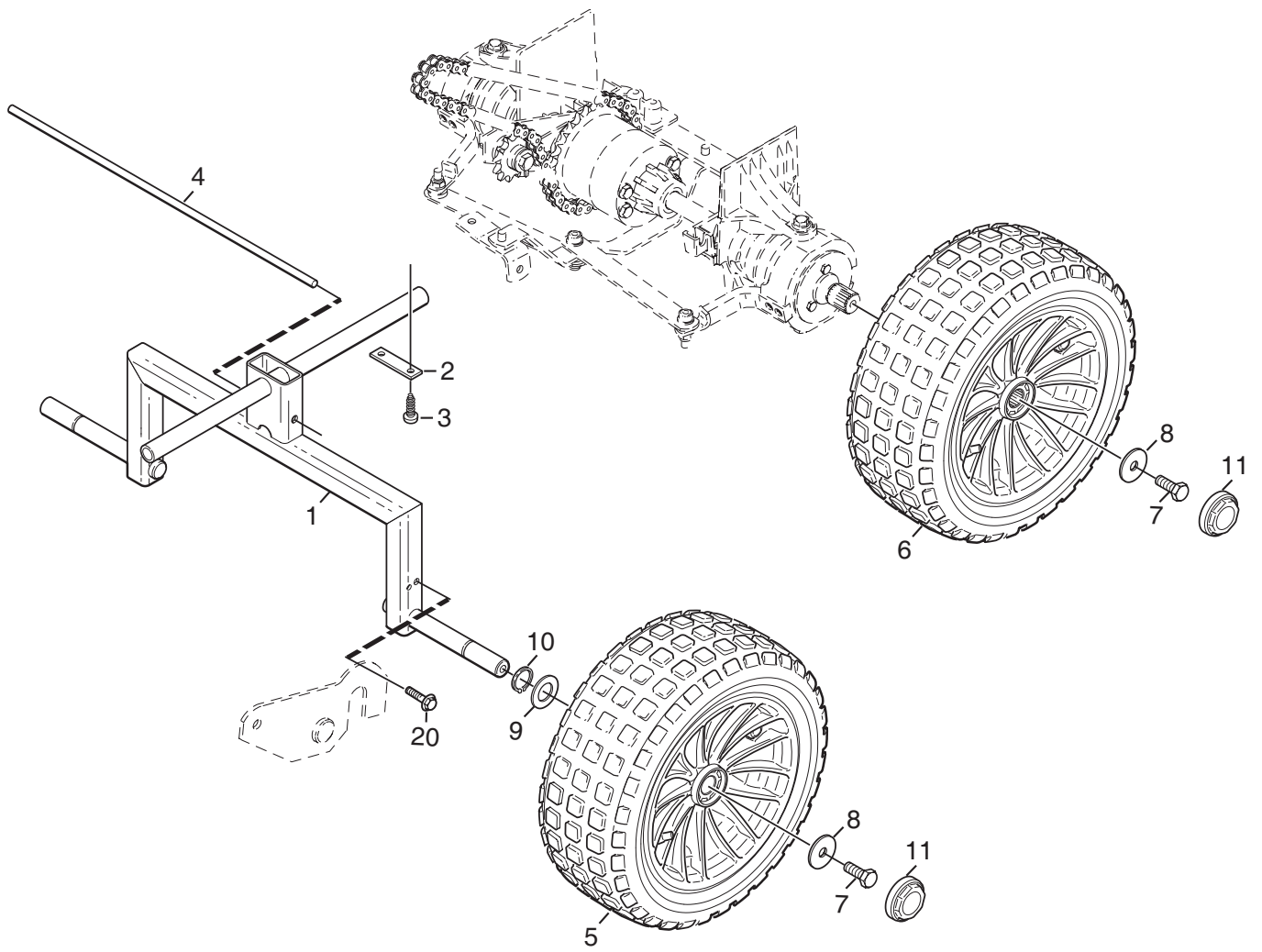




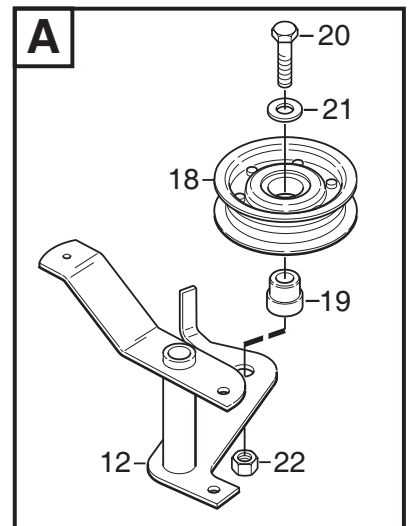
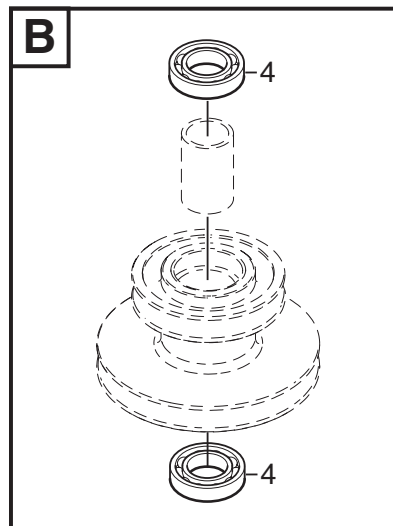
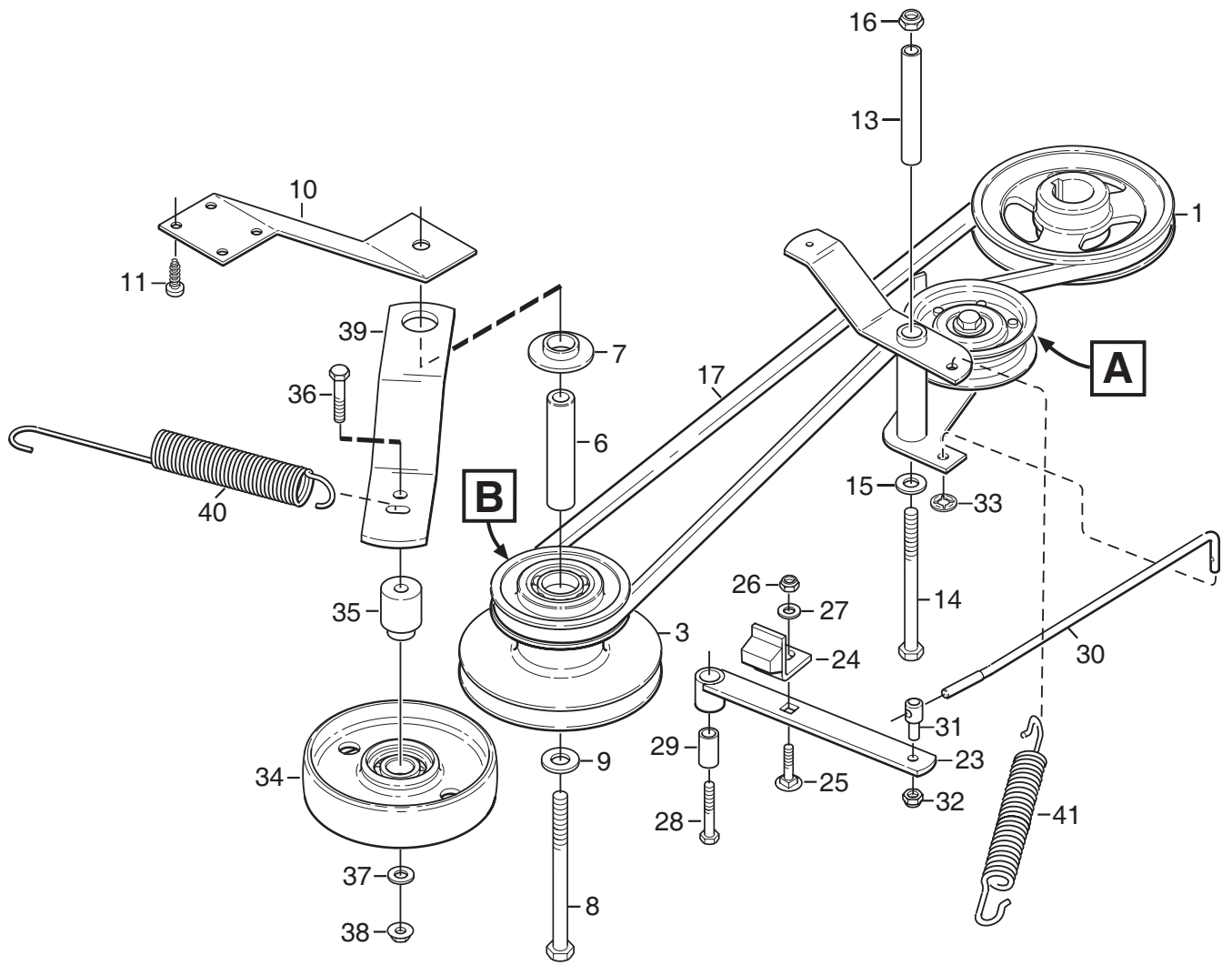


Ausgabe Issue 2008-31		Bild Nr Picture No C190		X1 TRANSMISSION		X1 TRANSMISSION		Seite Page 16	
Pos. Fig.	Anzahl/Quantity				Artikel Nr. Part No	Bezeichnung	Description	Satz Kit	Anmerkung Notes
	2413 -81								
X	1	1			1134-6650-01	Hinterachse kpl.....	Rear axle assy.....		
X	2	1			1134-6667-01	• Kettenrad.....	• Chain wheel.....		
X	3	1			1134-6668-01	• Kette.....	• Chain.....		
	4	1			1134-3820-01	• Kettenrad.....	• Sprocket.....		
	5	1			1134-3797-01	• Distanz.....	• Spacer.....		
	6	4			9699-0090-02	Scheibe.....	Flat washer.....		
	7	4			9997-0814-02	Schraube.....	Screw.....		M8 x 140
X	8	1			1134-6717-01	Getriebe kpl.....	Gearbox assy.....		
X	9	1			1134-7381-01	• Schalter.....	• Switch- neutral.....		
X	10	1			1134-7382-01	• Bremsbelag.....	• Brake pad.....		Kit of 2 pcs.
X	11	1			1134-6652-01	Kettenrad.....	Chain wheel.....		
X	12	1			9651-0016-04	Schließring.....	Lock ring.....		
X	13	1			1134-6494-01	Riemenscheibe.....	Belt pulley.....		
	14	1			9650-0016-04	Seegersicherung.....	Lock ring.....		
X	15	1			1134-6481-01	Getriebeplatte.....	Gearbox plate.....		
	16	4			9945-0816-16	Schraube.....	Screw.....		
	17	4			9897-0850-12	Schraube.....	Screw.....		
	18	4			9739-0831-22	Mutter.....	Nut.....		
X	19	1			1134-6564-01	Neutralbegrenzung.....	Neutral stop.....		
	20	2			9893-0616-16	Schraube.....	Screw.....		
X	21	1			1134-6487-01	Konsole.....	Console.....		
	22	4			9945-0816-16	Schraube.....	Screw.....		
	23	1			9959-0820-16	Schraube.....	Screw.....		
X	24	1			1134-6505-01	Kupplungsarm.....	Clutch lever.....		
	25	1			9997-0840-16	Schraube.....	Screw.....		
	26	1			9699-0056-02	Scheibe.....	Flat washer.....		
	27	1			1134-1565-06	Distanz.....	Spacer.....		
X	28	1			9585-0174-01	Keilriemen.....	V- belt.....		
	29	1			1134-2989-02	Spannrolle- grau.....	Tension roller- grey.....		
	30	1			9924-1035-16	Schraube.....	Screw.....		
	31	1			9739-1031-22	Mutter.....	Nut.....		
X	32	1			1134-6692-01	Feder.....	Spring.....		

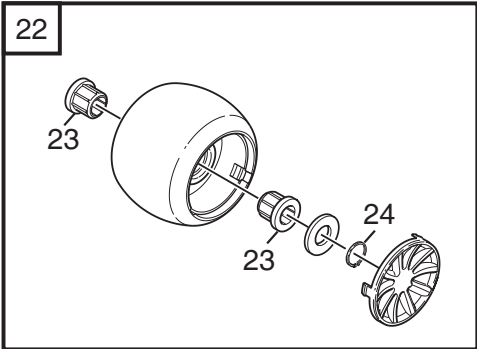
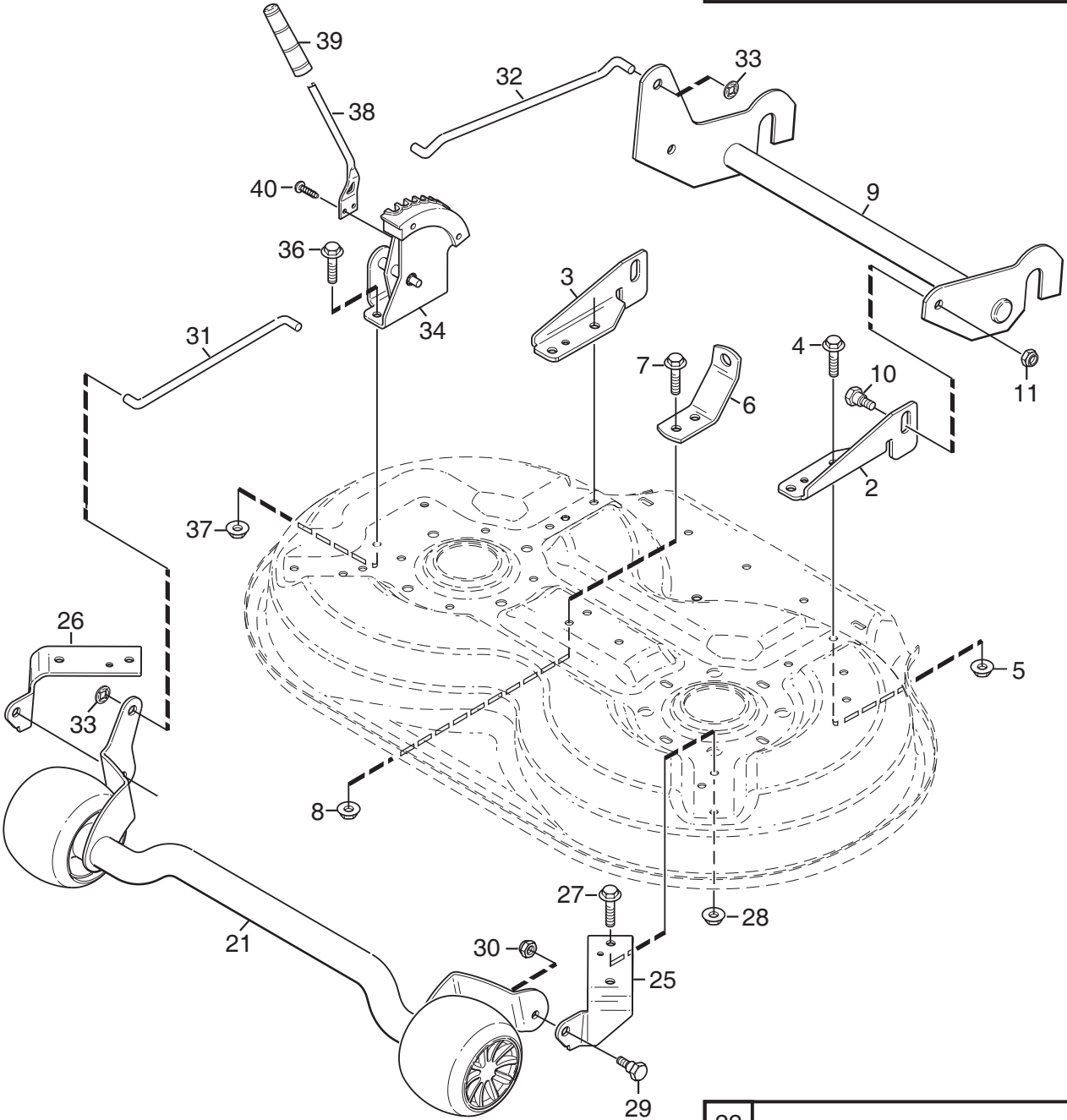
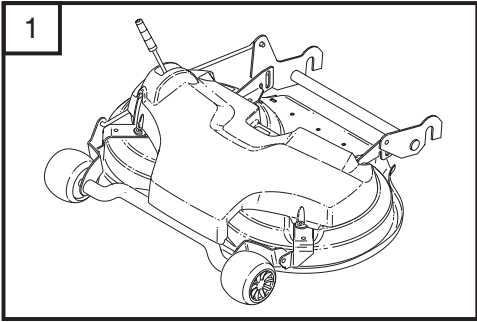




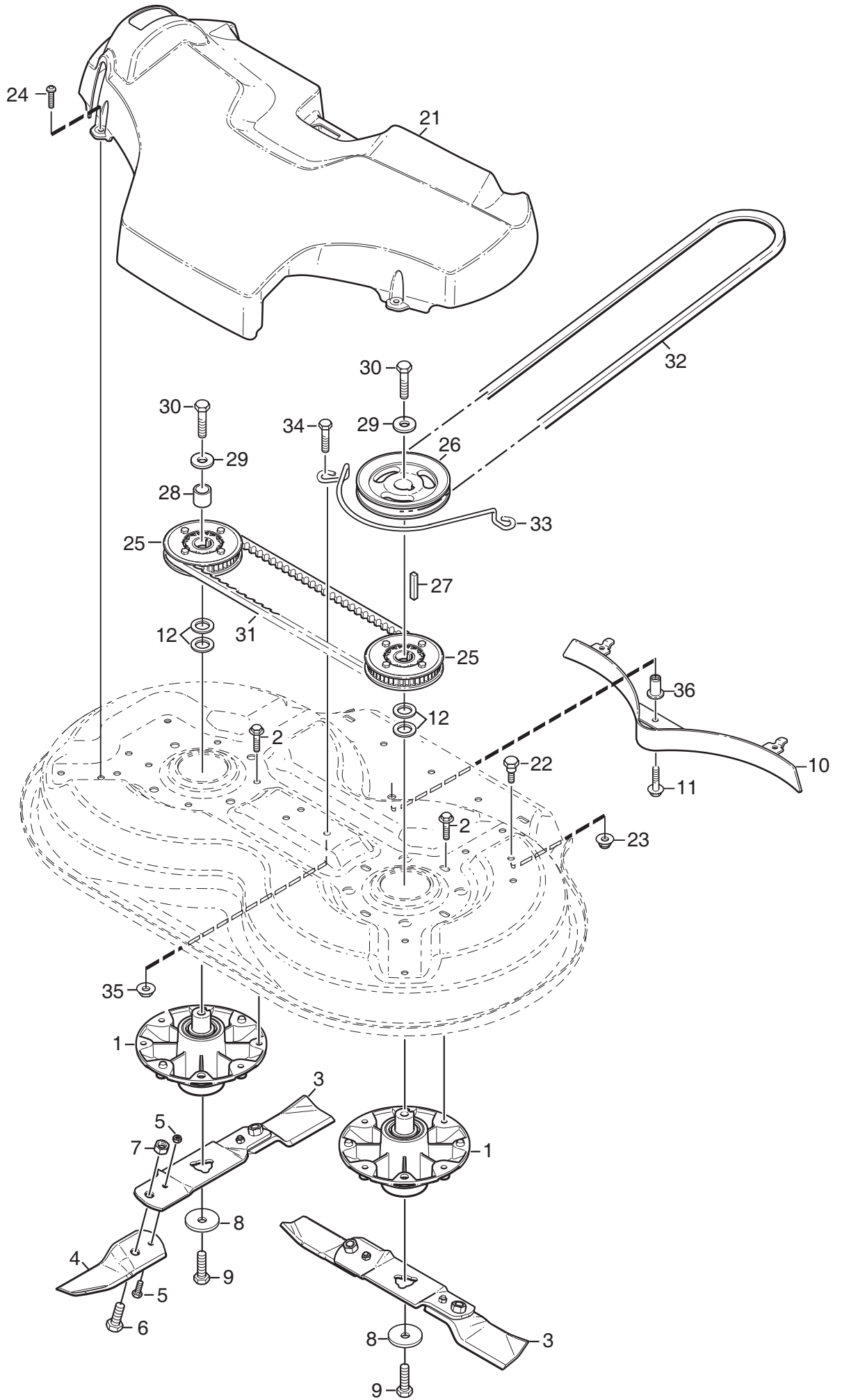
Ausgabe Issue 2008-31		Bild Nr Picture No C191		X1 RÄDER		X1 WHEELS		Seite Page 18	
Pos. Fig.	Anzahl/Quantity				Artikel Nr. Part No	Bezeichnung	Description	Satz Kit	Anmerkung Notes
	2413 -81								
X	1	1			1134-6540-01	Vorderachse .....	Front wheel axle .....		
X	2	1			1134-6527-01	Klemme .....	Clamp.....		
X	3	2			9838-8822-19	Schraube .....	Screw.....		
X	4	1			1134-6569-01	Vorderachsfeder .....	Wheel axle spring.....		
X	5	2			1134-7244-01	Vorderrad kpl.....	Front wheel assy .....		
X	6	2			1134-7243-01	Hinterrad kpl.....	Rear wheel assy .....		
	7	4			9997-1020-16	Schraube .....	Screw.....		
	8	4			1134-5406-01	Scheibe.....	Washer.....		
	9	2			1134-0341-01	Scheibe.....	Washer.....		
	10	2			9650-0020-04	Seegersicherung.....	Circlip.....		
X	11	4			1134-6510-01	Radkappe.....	Hub cap.....		
	20	2			9945-0816-16	Schraube .....	Screw.....		



Ausgabe Issue 2008-31		Bild Nr Picture No C192		X1 NEBENANTRIEB		X1 POWER TAKE-OFF		Seite Page 20	
Pos. Fig.	Anzahl/Quantity				Artikel Nr. Part No	Bezeichnung	Description	Satz Kit	Anmerkung Notes
	2413 -81								
X	1	1			1134-6496-01	Riemenscheibe .....	Belt pulley .....		M8 x 130
X	3	1			1134-6617-01	Riemenscheibe kpl .....	Intermediate pulley .....		
X	4	2			9549-0019-00	• Kugellager .....	• Ball bearing .....		
X	6	1			1134-6519-01	Achse .....	Shaft .....		
X	7	1			1134-5548-01	Distanz .....	Spacer .....		
X	8	1			9997-0813-02	Schraube .....	Screw .....		
X	9	1			9699-0056-02	Scheibe .....	Flat washer .....		
X	10	1			1134-6567-01	Stützstrebe .....	Support plate .....		
X	11	4			9838-8822-19	Schraube .....	Screw .....		
X	12	1			1134-6501-01	Kupplungsarm .....	Clutch lever .....		
X	13	1			1134-1565-17	Distanz .....	Spacer .....		
X	14	1			9997-0811-02	Schraube .....	Screw .....		
X	15	1			9699-0056-02	Scheibe .....	Flat washer .....		
X	16	1			9747-0831-02	Mutter .....	Lock nut .....		
X	17	1			9585-0175-01	Keilriemen .....	V-belt .....		
X	18	1			25601576/0	Riemenrolle .....	Belt roller .....		
X	19	1			1134-6548-01	Distanz .....	Spacer .....		
X	20	1			9997-1040-16	Schraube .....	Screw .....		
X	21	1			9699-0035-02	Scheibe .....	Flat washer .....		
X	22	1			9799-1031-02	Mutter .....	Nut .....		
X	23	1			1134-6497-01	Bremsarm .....	Brake lever .....		
X	24	1			1134-4164-04	Bremsbelag .....	Brake pad .....		
X	25	1			9897-0825-16	Schraube .....	Screw .....		
X	26	1			9747-0831-02	Mutter .....	Lock nut .....		
X	27	2			9699-0056-02	Scheibe .....	Flat washer .....		
X	28	1			9997-0855-12	Schraube .....	Screw .....		
X	29	1			1134-1565-06	Distanz .....	Spacer .....		
X	30	1			1134-6500-01	Bremsstange .....	Brake rod .....		
X	31	1			1134-4170-01	Nippel .....	Nipple .....		
X	32	1			9747-0631-02	Mutter .....	Lock nut .....		
X	33	1			9675-0008-02	Verriegelungsscheibe .....	Locking washer .....		
X	34	1			1134-1770-01	Spannrolle .....	Tension roller .....		
X	35	1			1134-1888-04	Distanz .....	Spacer .....		
X	36	1			9997-0840-16	Schraube .....	Screw .....		
X	37	1			9699-0056-02	Scheibe .....	Flat washer .....		
X	38	1			9739-0831-22	Mutter .....	Nut .....		
X	39	1			1134-6492-01	Spannarm .....	Tension lever .....		
X	40	1			1134-5111-02	Feder .....	Spring .....		
X	41	1			1134-5713-03	Feder .....	Spring .....		



Ausgabe Issue 2008-31		Bild Nr Picture No C193		X1 MÄHWERK RAHMEN		X1 MOWER DECK FRAME		Seite Page 22	
Pos. Fig.	Anzahl/Quantity				Artikel Nr. Part No	Bezeichnung	Description	Satz Kit	Anmerkung Notes
	2413 -81								
X	1	1			1134-7383-02	Mähwerk kpl.....	Mower deck assy .....		
X	2	1			1134-6587-01	Halter- L.....	Holder- LH.....		
X	3	1			1134-6587-02	Halter- R.....	Holder- RH.....		
	4	4			9959-0820-16	Schraube .....	Screw.....		
	5	4			9739-0831-22	Mutter .....	Nut.....		
X	6	1			1134-6591-01	Hebehaken.....	Lift loop.....		
	7	2			9959-0820-16	Schraube .....	Screw.....		
	8	2			9739-0831-22	Mutter .....	Nut.....		
X	9	1			1134-6598-01	Rahmen.....	Mounting frame .....		
	10	2			1134-0240-00	Ansatzbolzen .....	Shoulder screw .....		
	11	2			9747-0831-02	Mutter.....	Lock nut.....		
X	21	1			1134-6735-01	Vorderrohr kpl .....	Front tube assy .....		Pos 22 incl. Pos 23, 24 incl.
X	22	2			1134-9139-01	• Stützrad kpl .....	• Support wheel kit .....		
	23	4			1134-0068-00	•• Lager .....	•• Bearing.....		
	24	1			9650-0020-04	•• Seegersicherung.....	•• Circlip.....		
X	25	1			1134-6594-01	Halter- L.....	Bracket- LH.....		
X	26	1			1134-6594-02	Halter- R.....	Bracket- RH.....		
	27	4			9959-0820-16	Schraube .....	Screw.....		
	28	4			9739-0831-22	Mutter .....	Nut.....		
	29	2			1134-0240-00	Ansatzbolzen .....	Shoulder screw .....		
	30	2			9747-0831-02	Mutter.....	Lock nut.....		
X	31	1			1134-6599-01	Stange.....	Strut.....		
X	32	1			1134-6600-01	Stange.....	Strut.....		
	33	4			9675-0015-02	Verriegelungsscheibe .....	Lock washer.....		
X	34	1			1134-6755-01	Höhenverstellkonsole .....	Level bracket assy.....		
	36	2			9959-0820-16	Schraube .....	Screw.....		
	37	2			9739-0831-22	Mutter .....	Nut.....		
	38	1			1111-2816-01	Höheneinstellhebel .....	Height adj.lever .....		
	39	1			1111-2817-01	Griff .....	Lever knob.....		
	40	2			9893-0616-16	Schraube .....	Screw.....		



Ausgabe Issue 2008-31		Bild Nr Picture No C194		X1 MÄHWERK TRANSMISSION MESSERN		X1 MOWER DECK TRANSMISSION BLADES		Seite Page 24	
Pos. Fig.	Anzahl/Quantity				Artikel Nr. Part No	Bezeichnung	Description	Satz Kit	Anmerkung Notes
	2413 -81								
X	1	2			1134-6613-01	Lagerbuchse kpl .....	Bearing box assy.....		
	2	8			9945-0825-16	Schraube .....	Screw.....		
X	3	2			1134-6609-01	Messerbalken .....	Blade bar.....		
X	4	1			1134-9130-01	• Messersatz .....	• Blade kit .....		
	5	1			1134-9054-01	•• Scherbolzensatz.....	•• Shear bolt kit.....		
	6	2			1134-6311-01	•• Bolt .....	•• Bolt.....		
	7	2			1134-6312-01	•• Schloßmutter .....	•• Lock nut .....		
	8	2			1134-6211-01	Messerscheibe.....	Blade washer.....		
X	9	2			9997-1050-12	Schraube .....	Screw.....		
X	10	1			1134-6590-01	Mulchpropfen .....	Mulch plug.....		
	11	1			9959-0820-16	Schraube .....	Screw.....		
	12	4			1134-0341-01	Scheibe.....	Washer.....		
X	21	1			1134-6713-02	Transmissionsdeckel .....	Transmission cover.....		
	22	1			1134-0240-00	Ansatzbolzen .....	Shoulder screw .....		
	23	1			9739-0831-22	Mutter .....	Nut.....		
	24	3			9893-0616-16	Schraube .....	Screw.....		
X	25	2			1134-6616-01	Zahnriemenscheibe .....	Toothed belt pulley.....		
X	26	1			1134-6607-01	Riemenscheibe .....	Belt pulley .....		
	27	1			9600-0168-01	Keil .....	Key.....		
X	28	1			1134-5124-02	Distanz.....	Spacer.....		
	29	2			1134-5406-01	Scheibe.....	Washer.....		
	30	2			9997-0850-16	Schraube .....	Screw.....		
X	31	1			9585-0173-01	Zahnriemen .....	Timing belt.....		
X	32	1			9585-0176-01	Keilriemen .....	V- belt.....		
X	33	1			1134-7017-01	Riemenfuehrung .....	Belt guide.....		
	34	2			9959-0820-16	Schraube .....	Screw.....		
	35	2			9739-0831-22	Mutter .....	Nut.....		
	36	1			1134-5595-01	Nietmutter .....	Riveting nut.....		Not ill.