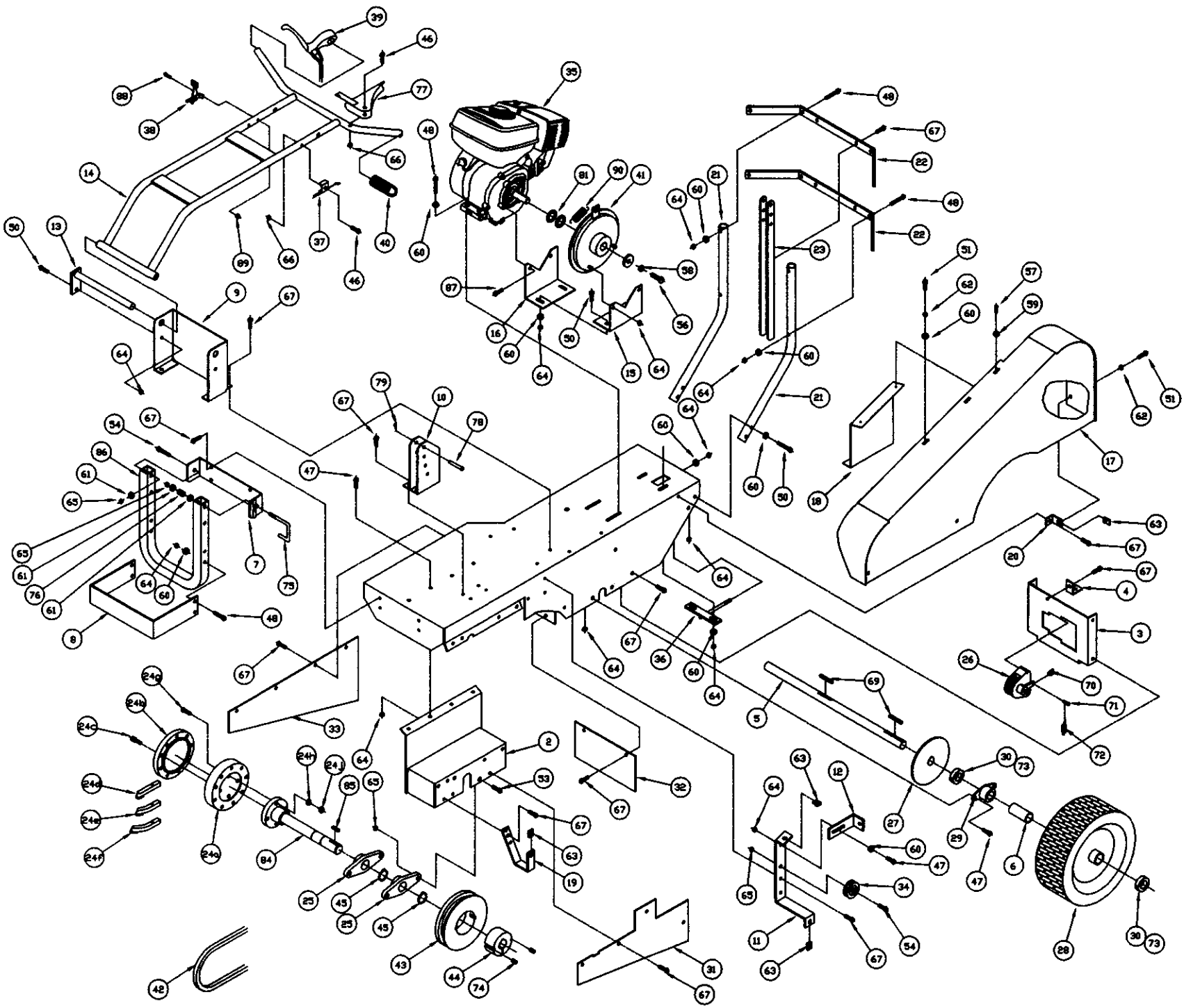


SECTION VIII - CPSC92 ASSEMBLY DRAWING



# PARTS LIST – CPSC92

<u>Item No.</u>	<u>Part No.</u>	<u>Qty.</u>	<u>Description</u>
1	807-0101	1	Machine Base Weldment
2	807-0104	1	Cutter Head Support Weldment
3	807-0121	1	Brake Plate
4	807-0122	1	Brake Cable End Mount
5	807-0137	1	Axle
6	807-0060	1	Wheel Spacer
7	807-0108	1	Kickstand Bracket Weldment
8	807-0109	1	Kick Guard
9	807-0110	1	Handle Mount Plate
10	807-0111	2	Adjustment Plate
11	807-0118	1	Idler Bracket
12	807-0119	1	Cable End Support
13	807-0025	1	Pivot Pin Weldment
14	807-0068	1	Handle Weldment
15	807-0140	1	Clutch Plate- Clutch
16	807-0141	1	Clutch Plate- Engine
17	807-0124	1	Belt Guard Weldment
18	807-0128	1	Inner Guard
19	807-0129	1	Guard Mount- Cutter End
20	807-0130	1	Guard Mount- Engine End
21	807-0131	2	Bumper Tube
22	807-0132	2	Bumper Strap
23	807-0133	1	Handle Support
24	807-0070	1	Cutter Head Assembly
24a	807-0007	1	Cutter Head Body
24b	807-0008	1	Cutter Head Cover
24c	090-0513	9	3/8-24 x 1" Socket Head. Cap Screw GR8
24d	807-0001	3	Cutter Teeth - Straight
24e	807-0002	3	Cutter Teeth - 25 Degree LH
24f	807-0003	3	Cutter Teeth - 45 Degree LH
24g	090-0113	4	3/8-16 x 1 3/4 HHCS GR5 PLTD
24h	090-0228	4	3/8 Split Lock Washer PLTD
24j	090-0207	4	3/8-16 Hex Nut PLTD
25	030-0279	2	1 3/16" 2 Bolt Bearing
26	807-0006	1	Brake Caliper
27	807-0005	1	Brake Rotor
28	807-0013	2	Wheel 13/5.00-6 W/1" Dia. Hub
29	030-0246	2	1" Drive Shaft Bearing
30	807-0059	3	Axle Locking Collar
31	807-0134	1	Drive Side Guard
32	807-0135	1	Engine Side Guard
33	807-0136	1	Open Side Guard
34	909-0012	1	Idler Sheave
35	030-0201	1	Engine- 9HP B & S Vanguard
36	913-0044	1	Belt Tensioner
37	807-0116	1	Clutch Control Cable
38	807-0139	1	72" Throttle Control- 74.5 Wire
39	807-0037	1	Brake Handle
40	500-0041	2	Black Handle Grip 7/8" x 5"
41	030-0269	1	Clutch Brake CB62S
42	030-0268	1	5H740 Belt
43	807-0004	1	Pulley- 5 3/4" Dia.

## PARTS LIST CONTINUED – CPSC92

<u>Item No.</u>	<u>Part No.</u>	<u>Qty.</u>	<u>Description</u>
44	030-0118	1	Bushing 1 3/16"
45	030-0117	2	Retaining Ring 1 3/16
46	090-0013	1	1/4-20 x 1 3/4 HHCS GR5 PLTD
47	090-0066	9	5/16-18 x 3/4 HHCS GR5 PLTD
48	090-0072	12	5/16-18 x 2 HHCS GR5 PLTD
49	090-0073	4	5/16-18 x 2 1/4 HHCS GR5 PLTD
50	090-0088	3	5/16-18 x 1 HHCS GR5 PLTD
51	090-0089	3	5/16-18 x 1 1/4 HHCS GR5 PLTD
52	090-0110	4	3/8-16 X 1 HHCS GR5 PLTD
53	090-0111	4	3/8-16 X 1 1/4 HHCS GR5 PLTD
54	090-0114	1	3/8-16 X 2 HHCS GR5 PLTD
55	090-0119	1	3/8-16 X 2 1/4 HHCS GR5 PLTD
56	090-0153	1	7/16-20 X 1 1/4 HHCS GR8 PLTD
57	090-0162	2	#10-32 X 3/8 Slotted Self Tapping Screw
58	090-0226	1	7/16 Internal Tooth Lock Washer PLTD
59	090-0232	2	1/4 USS Flat Washer PLTD
60	090-0233	27	5/16 USS Flat Washer PLTD
61	090-0234	4	3/8 USS Flat Washer PLTD
62	090-0394	3	5/16 Split Lock Washer
63	090-0438	4	5/16-18 J-nut Plain
64	090-0460	31	5/16-18 Nylon Insert Locknut PLTD
65	090-0461	12	3/8-16 Nylon Insert Locknut PLTD
66	090-0470	2	1/4-20 Nylon Insert Locknut PLTD
67	090-0503	35	5/16-18 Self Tapping Screw
68	090-0617	1	1/4-20 x 2 1/2 HHCS GR5 PLTD
69	703-0424	2	1/4 SQ x 2" Key
70	807-0036	1	Full Clevis
71	807-0057	1	Clevis Pin 1/4 Dia. x 7/8 Long PLTD
72	703-0425	1	Spring- Le-041D-7MW
73	080-0053	3	5/16-18 x 5/16 Socket Set Screw w/patch
74	020-0001	2	3/8-16 x 5/8 Socket Set Screw
75	804-0049	1	J Bolt
76	804-0050	1	Spring
77	807-0146	1	Operator Presence Handle Weldment
78	807-0056	2	Clevis Pin 5/16 Dia. x 2 Long PLTD
79	100-0015	2	3/32 Hair Spring Cotter PLTD
80	807-0035	1	Brake Cable Assembly
81	090-0024-3	2	1.500 OD x 1.015 ID x 0.075 THK Shim
82	900-0074	4	Cable Tie 1/8 x 5 1/2
83	090-0418	2	5/16-18 Whiz Lock Nut PLTD
84	807-0009	1	Drive Shaft Weldment
85	500-0031	1	1/4 SQ x 1" Key
86	804-0048	1	Leg Stand
87	090-0248	2	5/16-24 x 3/4 HHCS GR5 PLTD
88	090-0400	2	#10-32 X 1 1/4 Slotted Head Machine Screw
89	706-1539	2	#10-32 Kep Nut PLTD
90	706-0152	1	Clutch Control Spring