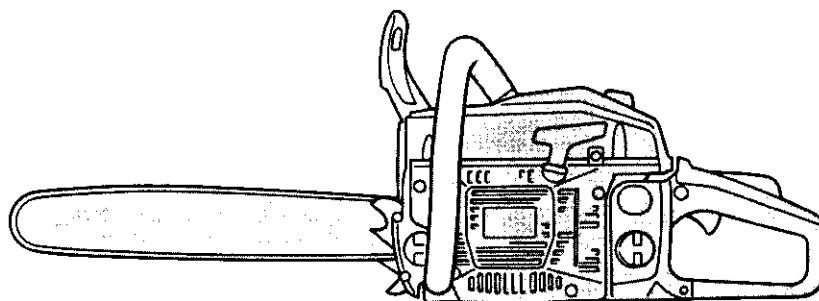


# SERVICE PARTS LIST

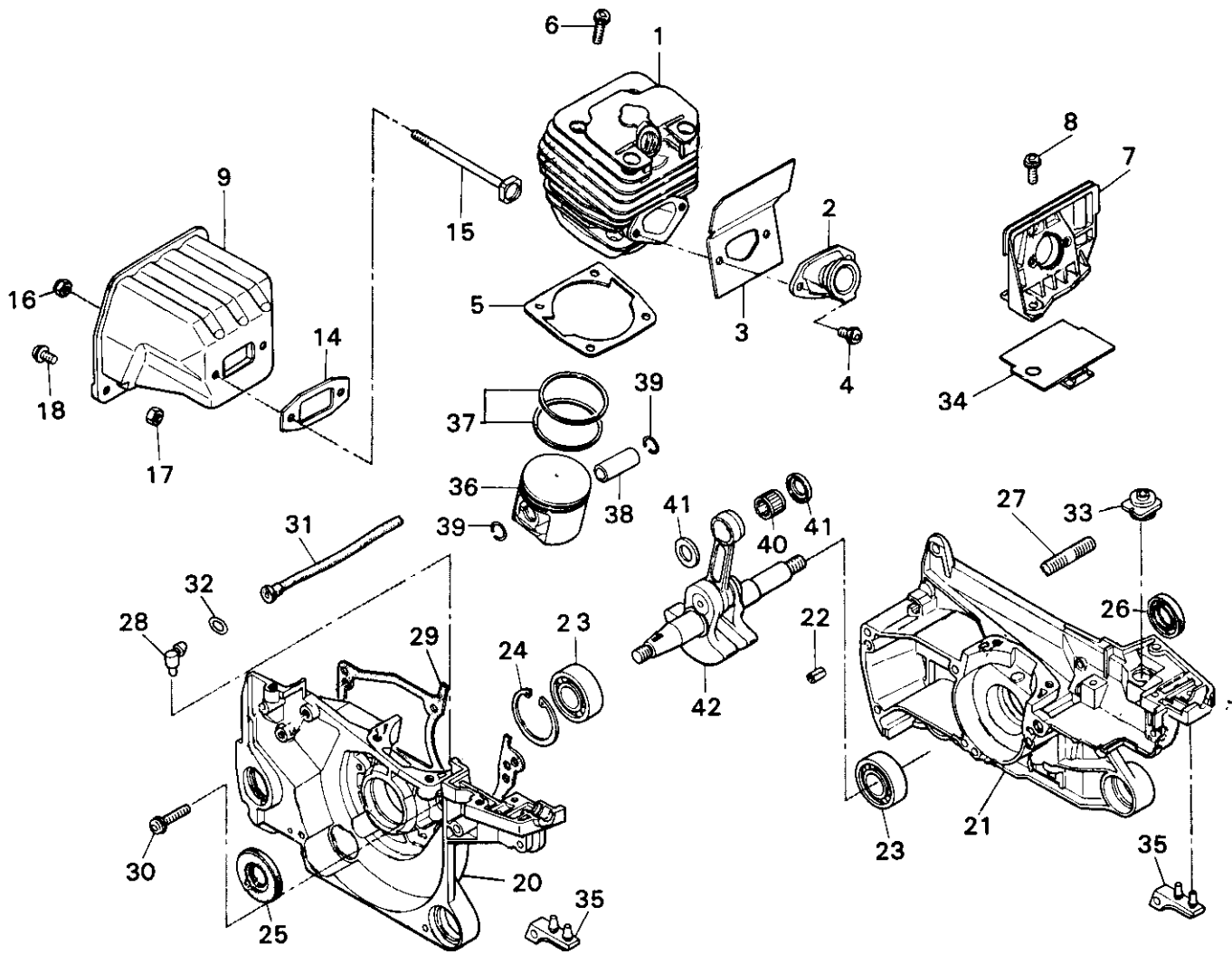
## Chain saw G450AVS



**KOMATSU  
ZENOAH**

**Note:** The parts indicated by " \* " in the Part Number column are supplied, not individually but, as an assembly. Please see the Remarks for assembly part number. Those parts with "OP" in the Remarks column are not supplied with standard unit, but available by separate order.

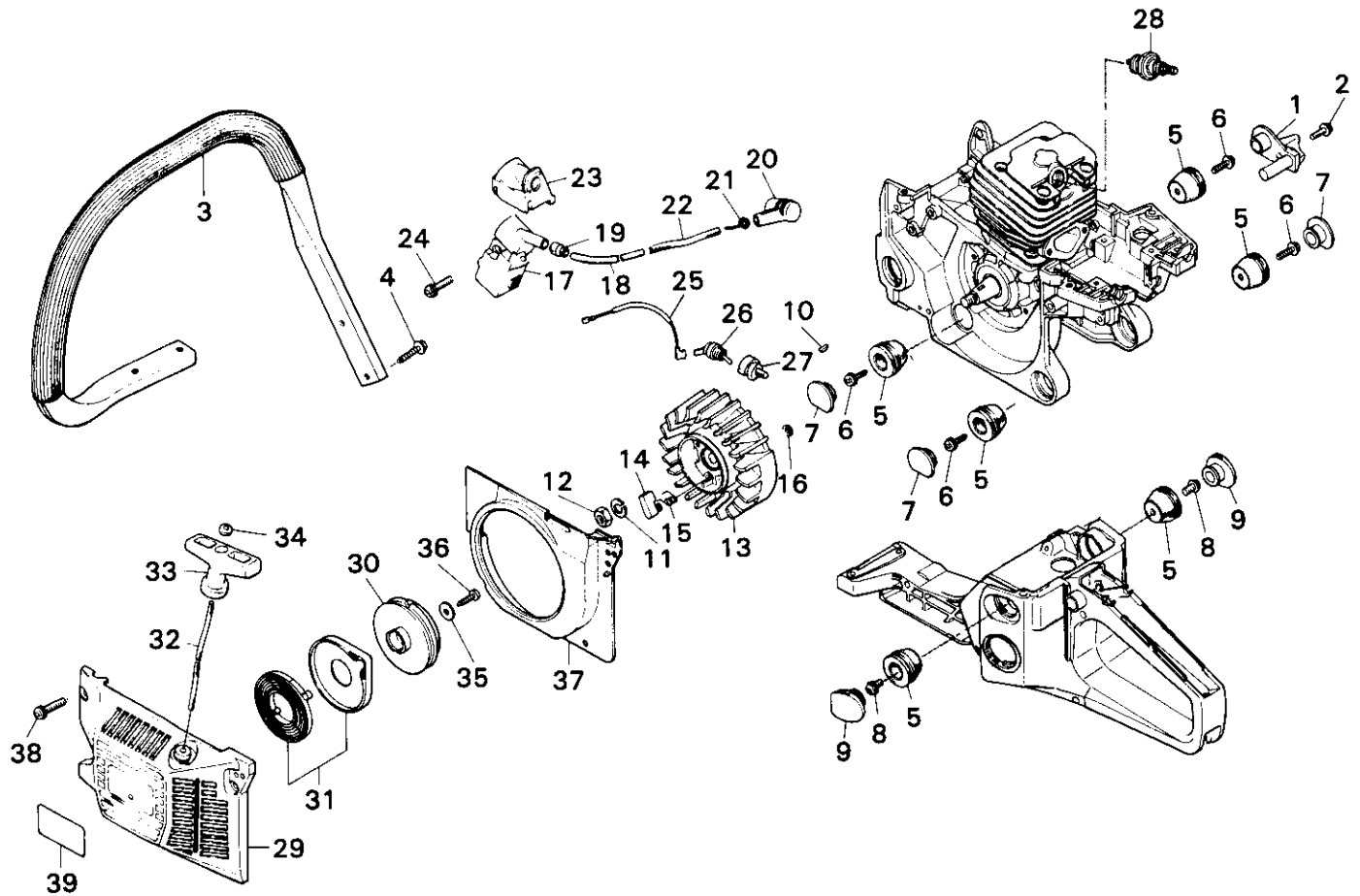
# Fig. 1 ENGINE BLOCK & MUFFLER



Index No.	Part Number	Description	Q'ty per Unit	Remarks
1	2670-12110	Cylinder	1	
2	2670-14111	Inlet pipe	1	
3	2670-14120	Gasket, inlet pipe	1	K1
4	2670-14130	Screw, M5 x 10L	2	
5	2670-14210	Gasket, cylinder base	1	K1
6	2670-14220	Screw, M5 x 20L	4	
7	2670-14310	Bracket	1	
8	2670-14320	Screw, M5 x 14L	2	
9	2670-15110	Muffler	1	
14	3356-15210	Gasket, muffler	1	K1
15	2670-15220	Bolt, M5 x 80L	2	
16	3356-15230	Nut	2	
17	0280-10504	Nut	2	
18	2670-14130	Screw, M5 x 10L	2	
	<b>2670-21000</b>	<b>Crankcase ass'y</b>		<b>20 to 28</b>
20	*	Crankcase mag.	1	*2670-21000
21	*	Crankcase PTO	1	*2670-21000
22	3356-21130	Spring pin	3	
23	06030-06202	Bearing	2	
24	04065-03515	Snap ring	1	
25	2670-21210	Oil seal, mag	1	
26	2670-21220	Oil seal, PTO	1	
27	0250-50825	Stud	2	
28	2670-21250	Elbow	1	
29	2670-21310	Gasket, crankcase	1	K1
30	2670-21320	Screw, M5 x 25L	5	
31	2670-22211	Pulse pipe	1	
32	3310-82230	Clip	1	
33	2670-22310	Grommet	1	
34	2670-22410	Mat	1	
35	2670-22510	Rear stopper	2	
36	2671-41111	Piston	1	
37	2670-41210	Piston ring	2	
38	3350-41310	Piston pin	1	

Index No.	Part Number	Description	Q'ty per Unit	Remarks
39	3350-41320	Snap ring	2	
40	1400-41410	Needle bearing	1	
41	2670-41510	Thrust washer	2	
42	2670-42000	Crankshaft comp.	1	
K1	2670-06010	Gasket kit		OP one ea. of 3, 5, 14 & 29

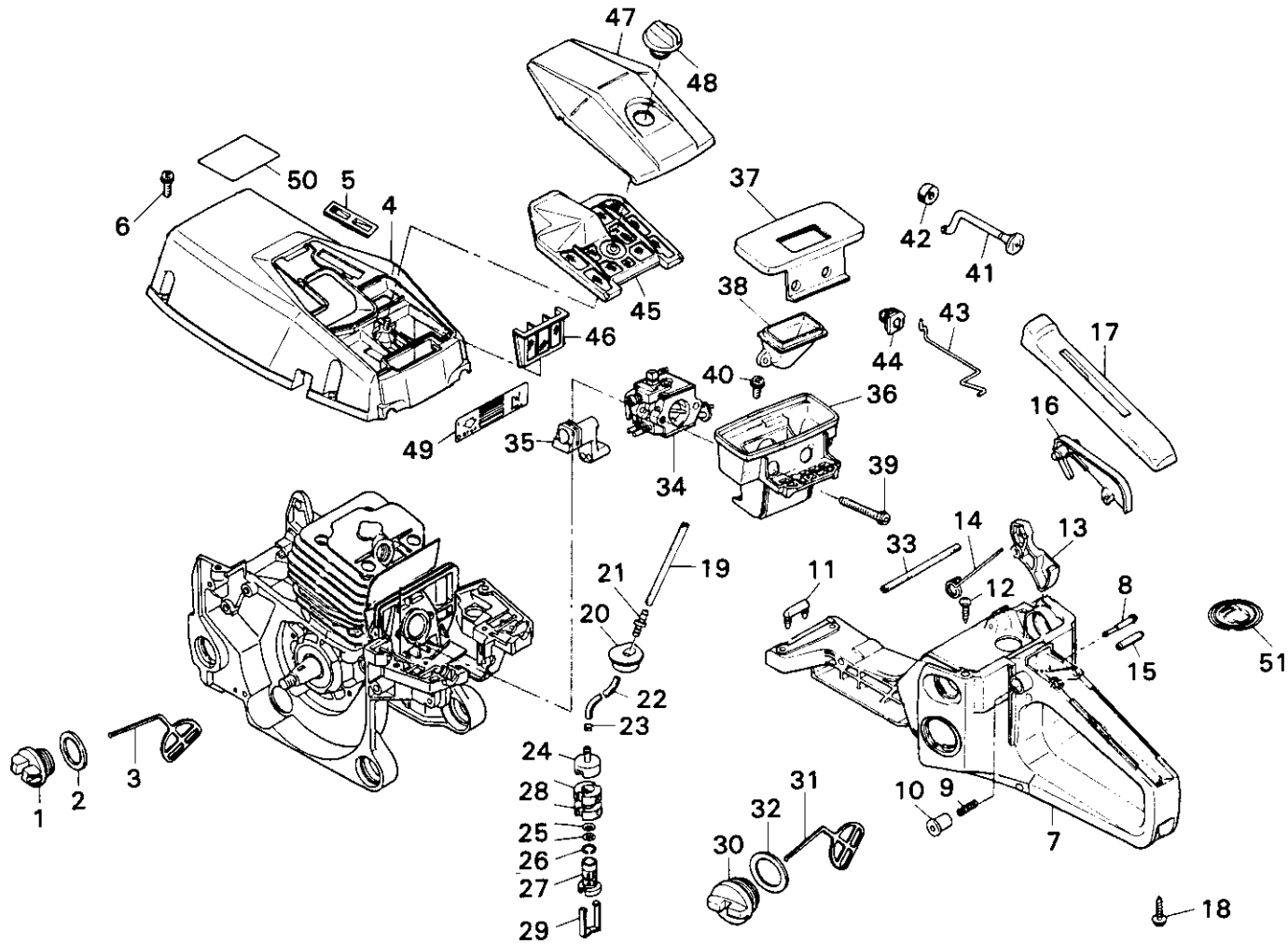
# Fig. 2 FRONT HANDLE, RUBBER JOINTS, IGNITION SYSTEM & STARTER



Index No.	Part Number	Description	Q'ty per Unit	Remarks
1	2670-25210	Chain catcher	1	
2	2670-14320	Screw, M5 x 14L	1	
3	2671-32100	Left handle comp.	1	
4	2671-32210	Screw, 5 x 19L	4	
5	2670-35110	Damper	6	
6	2670-35120	Screw, 5 x 16L	4	
7	2616-35180	Cap, damper	3	
8	2670-14130	Screw, M5 x 10L	2	
9	2670-35250	Cap, damper	2	
10	1000-43240	Key	1	
11	0290-20820	Washer	1	
12	3350-43230	Nut	1	
13	2670-71100	Rotor ass'y	1	13 to 16
14	1850-75220	Ratchet	2	*2670-71100
15	2670-71130	Return spring	2	
16	0308-00040	E-ring	2	
	2670-71300	Ignition coil ass'y		17 to 23
17	2670-71200	Ignition coil comp.	1	17 to 19
18	2670-71220	Ignition coil	1	*2670-71200
19	2670-71230	High tension cord	1	
20	3350-71220	Cap, spark plug	1	
21	1400-72121	Spring	1	
22	2670-71320	Tube	1	
23	2670-71310	Cover, coil	1	
24	2670-14220	Screw, M5 x 20L	2	
25	2670-71510	Cord, switch	1	
26	2670-71611	Switch	1	
27	2670-71620	Cover, switch	1	
28	3356-73110	Spark plug	1	Champion CJ7Y

Index No.	Part Number	Description	Q'ty per Unit	Remarks
	2670-75000	Starter ass'y		29 to 36
29	2670-75110	Recoil Case	1	
30	2670-75210	Reel	1	
31	3317-75300	Spring comp.	1	
32	2670-75410	Rope	1	
33	3310-75421	Knob	1	
34	3310-75431	Washer	1	
35	1400-86280	Washer	1	
36	2670-75520	Screw, 4 x 16L	1	
37	2670-75610	Fan cover	1	
38	2670-14320	Screw, M5 x 14L	4	
39	2670-75130	Label	1	

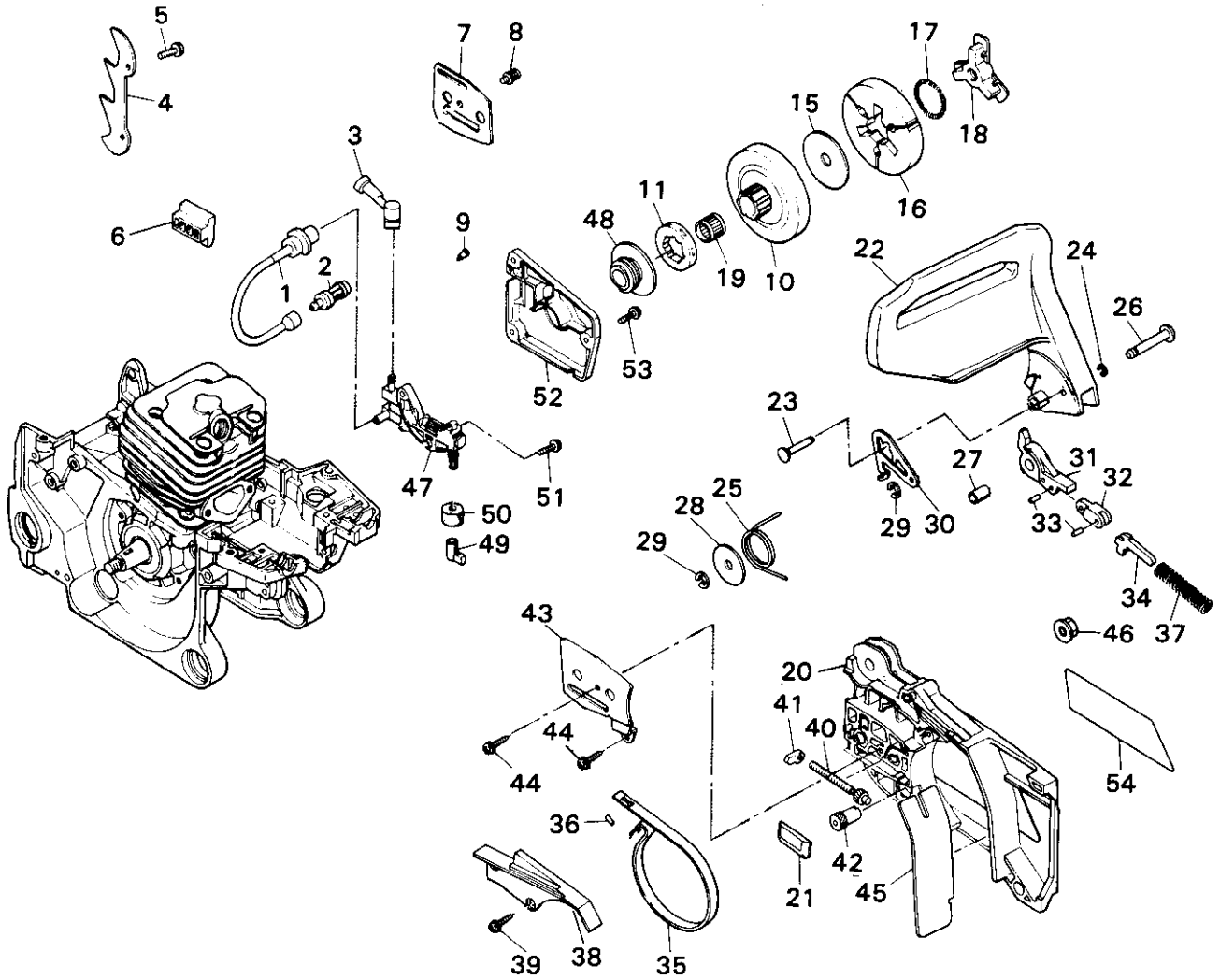
# Fig. 3 REAR HANDLE, FUEL FEED LINE & AIR CLEANER



Index No.	Part Number	Description	Q'ty per Unit	Remarks
1	2630-31801	Cap ass'y	1	1 to 3
2	2630-31820	Cap, oil tank	1	*2630-31801
3	.	Gasket	1	
4	2670-31100	Cylinder cover comp.	1	4 & 5
5	2670-31120	Cylinder cover	1	*2670-31100
6	2670-14320	Cap	1	
7	2670-14320	Screw, M5 x 14L	3	
8	2670-33000	Right handle ass'y	1	7 to 15
9	3330-33250	Right handle comp.	1	*2670-33000
10	3330-33250	Stopper	1	
11	3310-33262	Spring	1	
12	3310-33271	Knob	1	
13	2670-33280	Damper (A)	1	
14	2670-75520	Screw, 4 x 16L	1	
15	2670-33310	Throttle Lever	1	
16	3356-33321	Throttle Spring	1	
17	04025-00524	Spring pin	1	
18	3356-33350	Arm	1	
19	2670-34300	Fuel pipe ass'y	1	19 to 29
20	1492-85410	Fuel pipe	1	
21	2670-34320	Grommet	1	
22	1600-85630	Joint	1	
23	1601-85432	Suction pipe	1	
24	1260-85460	Clip	1	
24	3302-85400	Fuel filter ass'y	1	24 to 29
25	.	Body, filter	1	*3302-85400
25	.	Screen	2	*3302-85400

Index No.	Part Number	Description	Q'ty per Unit	Remarks
26	.	Ring	1	*3302-85400
27	.	Sleeve	1	*3302-85400
28	.	Filter	2	*3302-85400
29	.	Clip	1	*3302-85400
30	2670-34400	Tank cap ass'y	1	30 to 32
31	.	Cap, fuel tank	1	*2670-34400
32	.	Stopper	1	*2670-34400
32	2670-34430	Gasket	1	
33	1492-85410	Breather pipe	1	
34	2670-81001	Carburetor ass'y	1	WT-114
35	2670-82310	Guide	1	
36	2670-82110	Intake box	1	
37	2670-82120	Cover, intake box	1	
38	2670-82130	Guide, intake	1	
39	2670-82210	Screw, M5 x 45L	2	
40	2670-14130	Screw, M5 x 10L	2	
41	2670-82410	Choke rod	1	
42	2670-82420	Grommet, choke rod	1	
43	2670-82510	Throttle rod	1	
44	2670-82520	Grommet, Th rod	1	
45	2670-83110	Air cleaner, main	1	
46	2670-83210	Air cleaner, sub	1	
47	2670-83300	Cleaner cover comp.	1	47 & 48
48	.	Cleaner cover	1	*2670-83300
48	3356-83321	Knob	1	
49	2670-31210	Label, indication	1	
50	3359-83340	Label, caution	1	
51	3356-31160	Label, ear muff	1	

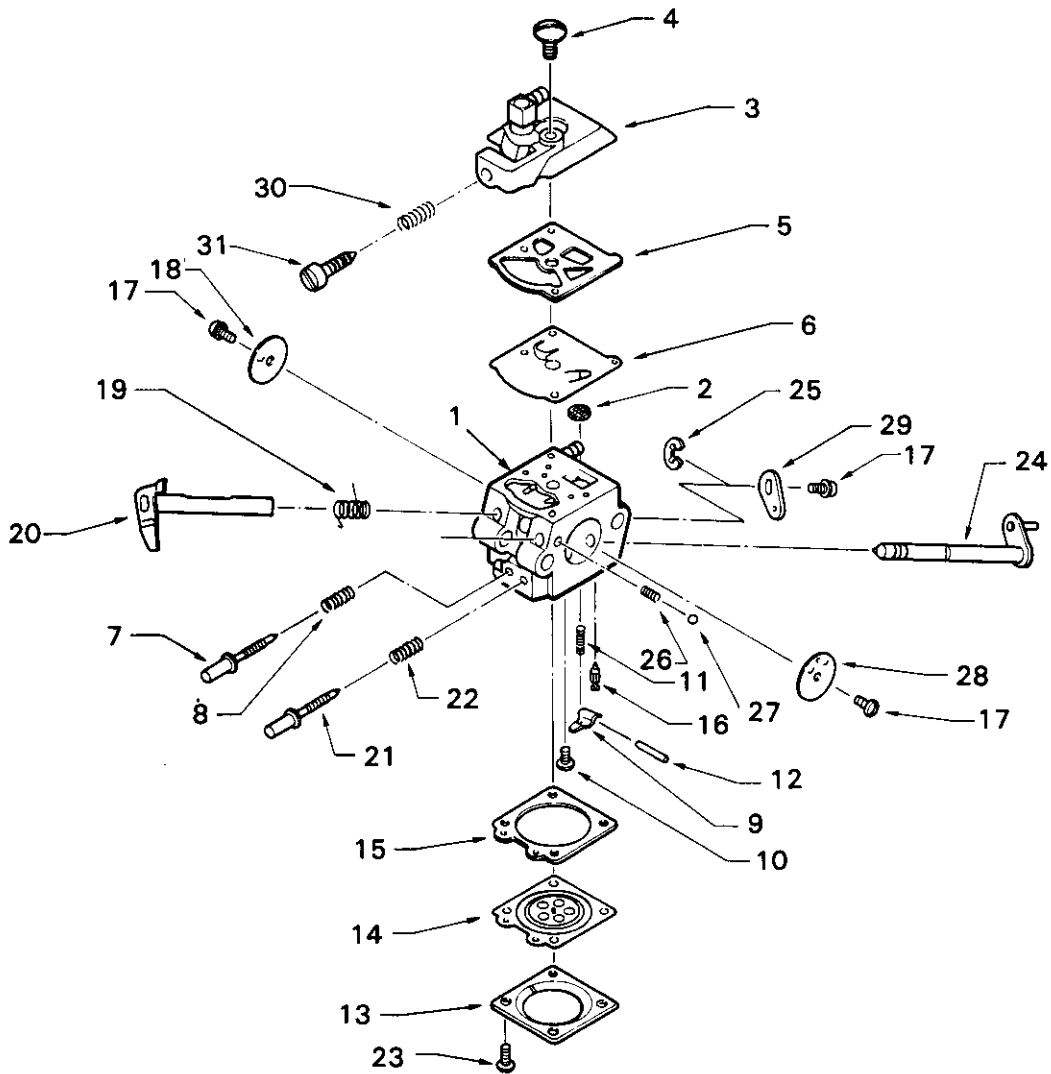
# Fig. 4 OIL FEED LINE, CLUTCH & CHAIN BRAKE



Index No.	Part Number	Description	Q'ty per Unit	Remarks
1	2670-23100	Oil pipe comp.		1 & 2
2	2670-23120	Oil pipe, inlet	1	
3	2670-23130	Oil filter	1	
4	2670-23210	Oil pipe, outlet	1	
5	2670-25310	Spike bumper	1	
6	2670-14320	Screw, M5 x 14L	2	
7	2670-25410	Chain guide	1	
8	2670-25422	Base plate	1	
9	2670-25430	Screw, M4 x 10L	1	
10	3330-23121	Breather valve	1	
11	2670-51110	Clutch drum	1	
12	3350-51121	Sprocket rim	1	7T x .325
13	2670-51200	Clutch ass'y		15 to 18
14	2670-51210	Thrust plate	1	
15	2670-51210	Clutch shoe	3	*2670-51200
16	3317-51230	Clutch spring	1	
17	*	Boss, clutch	1	*2670-51200
18	2670-51310	Needle bearing	1	
19	2671-54000	Chain cover ass'y		20 to 45
20	2671-53110	Chain cover	1	
21	2670-25410	Chain guide	1	
22	2670-54110	Front guard	1	
23	2670-54120	Stopper pin	1	
24	0308-00030	E-ring	1	
25	2670-54210	Return spring	1	
26	2670-54220	Pin	1	
27	2670-54230	Spacer	1	
28	3238-15230	Washer	1	
29	0308-00040	E-ring	2	
30	2670-54240	Stopper plate	1	

Index No.	Part Number	Description	Q'ty per Unit	Remarks
31	2670-54300	Brake lever comp.		31 to 33
32	*	Brake lever	1	*2670-54300
33	*	Yoke	1	*2670-54300
34	2670-54410	Roller	2	*2670-54300
35	2670-54410	Slide arm	1	
36	2670-54510	Brake band	1	
37	3356-24140	Roller	1	
38	2670-54610	Brake spring	1	
39	2670-54620	Cover, spring	1	
40	2670-54630	Screw, 4 x 12L	3	
41	2671-53210	Screw, chain adj.	1	
42	2671-53220	Nut, tensioner	1	
43	2671-53230	Gear	1	
44	2671-53240	Plate	1	
45	2670-54630	Screw, 4 x 12L	2	
46	2671-53310	Protector	1	
47	3350-53410	Nut	2	
48	2670-55100	Oil pump ass'y		47 & 48
49	*	Oil pump	1	*2670-55100
50	2670-55120	Worm gear	1	
51	2670-55210	Adjuster cap	1	
52	2670-55220	Seal	1	
53	2670-55410	Screw, M4 x 14L	2	
54	2670-55610	Cover, pump	1	
55	2670-55410	Screw, M4 x 14L	3	
56	2670-53120	Label	1	

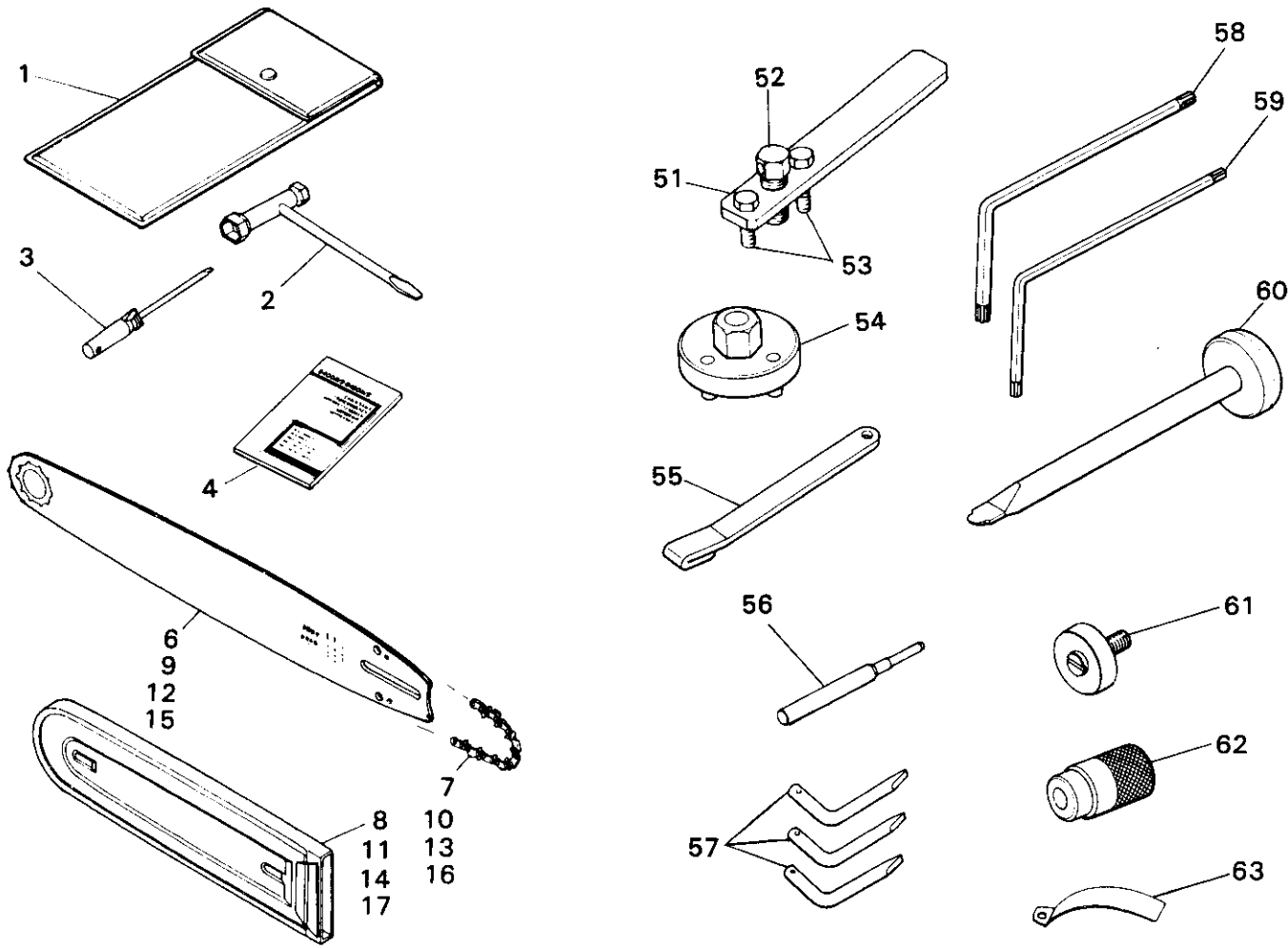
# Fig. 5 CARBURETOR COMPONENTS



Index No.	Part Number	Description	Q'ty per Unit	Remarks
	2670-81001	Carburetor ass'y		WT-114
1	*	Body ass'y	1	*2670-81000
2	3306-81380	Inlet screen	1	
3	2670-81120	Pump cover ass'y	1	
4	3310-81130	Screw	1	
5	*	Gasket, pump dia	1	*3304-81910
6	*	Pump diaphragm	1	*3304-81920
7	2670-81170	Low speed needle	1	
8	1491-81160	Spring, LSN	1	
9	3310-81230	Metering lever	1	
10	3310-81240	Screw, lever pin	1	
11	2670-81270	Spring, lever	1	
12	3310-81250	Pin, lever	1	
13	3310-81280	Cover, diaphragm	1	
14	*	Metering diaphragm	1	*3304-81920
15	*	Gasket, metering dia	1	*3304-81910
16	3356-81310	Inlet valve	1	
17	3310-81360	Screw, shutter	3	
18	3310-81340	Valve, throttle	1	
19	2670-81410	Return spring	1	
20	2670-81420	Shaft ass'y, Th	1	
21	2670-81330	High speed needle	1	
22	3080-81320	Spring, HSN	1	
23	3310-81351	Screw ass'y	4	
24	2670-81460	Shaft ass'y	1	
25	1148-81390	Ring	1	
26	3350-81350	Spring, friction	1	
27	3350-81220	Ball, friction	1	
28	2670-81450	Valve, choke	1	
29	2670-81440	Lever, throttle	1	
30	2630-81460	Spring, IAS	1	
31	2670-81430	Idle adjust screw	1	

Index No.	Part Number	Description	Q'ty per Unit	Remarks
K2	3304-81910	Gasket kit		OP one ea. of 5 & 15
K3	3304-81920	Diaphragm kit		OP one ea. of 6 & 14

# Fig. 6 ACCESSORIES & SERVICE TOOLS



Index No.	Part Number	Description	Q'ty per Unit	Remarks
	<b>2670-91000</b>	<b>Tool set</b>		<b>1 to 3</b>
1	1820-91111	Bag	1	
2	3320-91140	Plug wrench	1	
3	3350-91150	Screwdriver	1	
4	2670-93110	Owner's manual	1	
	<b>3643-00000</b>	<b>Bar set 13</b>		<b>6 to 8</b>
6	3643-52110	Bar 13 in.	1	Sprocket nose
7	3643-52210	Chain	1	21BP × 56E
8	3310-97112	Protector	1	
	<b>3644-00000</b>	<b>Bar set 14</b>		<b>9 to 11</b>
9	3644-52110	Bar 14 in.	1	Sprocket nose
10	3611-52210	Chain	1	21BP × 60E
11	3310-97112	Protector	1	
	<b>3645-00000</b>	<b>Bar set 16</b>		<b>12 to 14</b>
12	3645-52110	Bar 16 in.	1	Sprocket nose
13	3612-52210	Chain	1	21BP × 66E
14	3356-97110	Protector	1	
	<b>3646-00000</b>	<b>Bar set 18</b>		<b>15 to 17</b>
15	3646-52110	Bar 18 in.	1	Sprocket nose
16	3646-52210	Chain	1	21BP × 72E
17	3356-97110	Protector	1	
	<b>2670-96000</b>	<b>Special tool set</b>		<b>51 to 62</b>
	<b>3310-96100</b>	<b>Puller ass'y</b>		<b>51 to 53</b>
51	1075-96110	Puller, flywheel	1	OP
52	1075-96120	Bolt	1	OP
53	3310-96130	Bolt	2	OP
54	2670-96210	Clutch wrench	1	OP
55	2670-96220	Piston stopper	1	OP
56	3350-96230	Guide, piston pin	1	OP

Index No.	Part Number	Description	Q'ty per Unit	Remarks
57	2670-96240	Installer, clutch spring	3	OP
58	2670-96310	Wrench, torx M5	1	OP
59	2670-96320	Wrench, torx M4	1	OP
60	2670-96510	Guide, brake spring	1	OP
61	3350-96620	Guide, bearing	1	OP
62	2670-96660	Holder, guide	1	OP
63	3350-96240	Gauge	1	OP