

PARTS LIST

CHAIN SAW

G415AVS

NOTE :

1. Use KOMATSU ZENOAH genuine parts specified in the parts list for repair and/or replacement.
2. KOMATSU ZENOAH does not warrant the machines, those which have been damaged by the use of any parts other than those specified by the company.
3. When placing orders of parts for repair and/or replacement, check if the model name and the serial number are suitable to those specified in the parts list, then use parts number described in the parts list.
4. The contents described in the parts list may change due to improvement.
5. The parts for the machine shall be supplied within ten (10) years after the machine is discontinued.
[It is possible that some specific parts may be subject to change of their delivery term and list price within the limit of ten (10) years after the machine is discontinued. And it is also possible that some parts may be available even after the limit of ten (10) years.]

Fig.1 CLUTCH, IGNITION, POWER UNIT

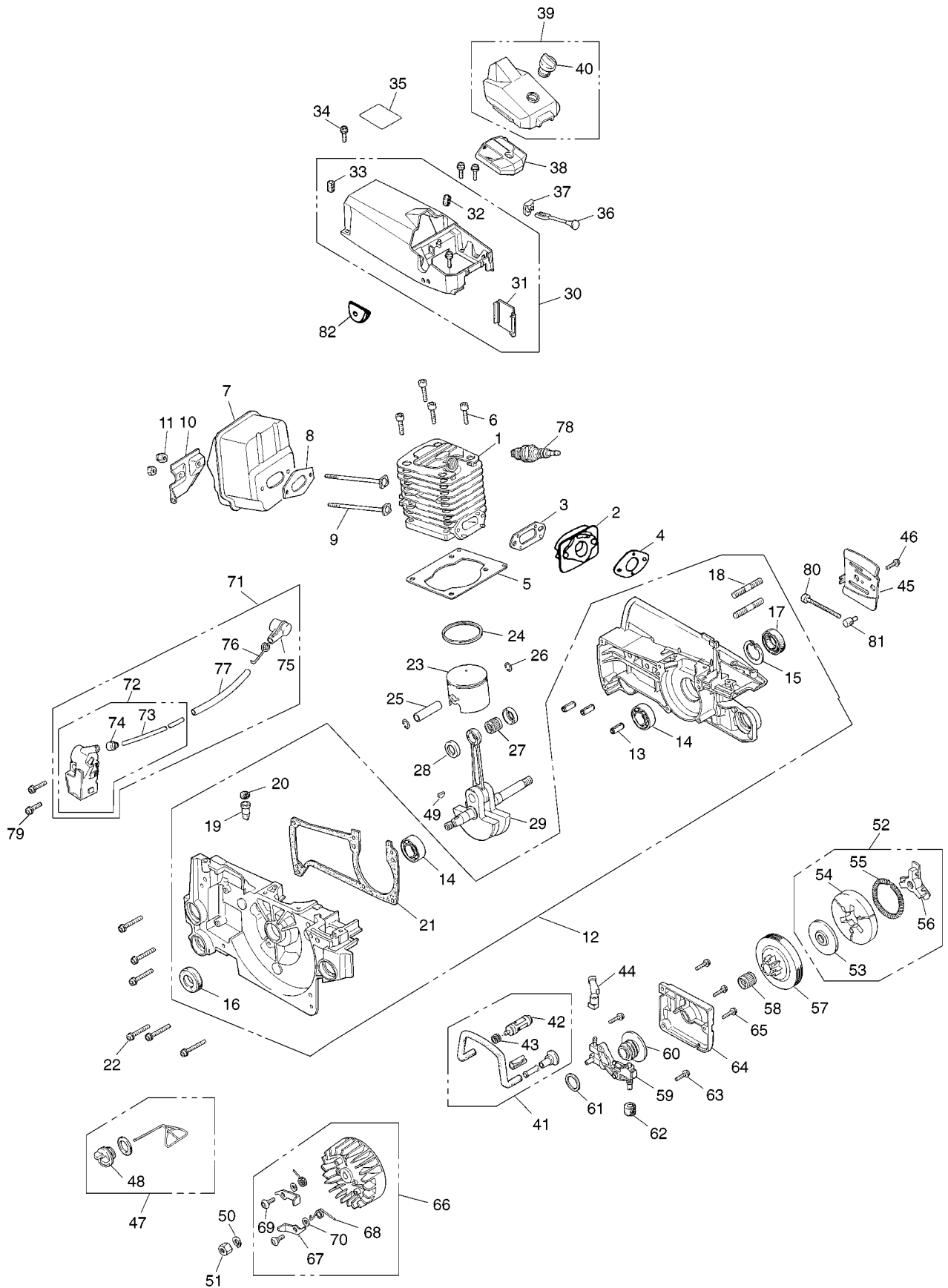


Fig.1 CLUTCH, IGNITION, POWER UNIT

Key#	PART NUMBER	DESCRIPTION	Q'TY /UNIT	NOTE	Key#	PART NUMBER	DESCRIPTION	Q'TY /UNIT	NOTE
1	2869-12110	Cylinder	1		57	2851-51111	Clutch drum(0.325"-7)	1	
2	2867-14110	Insulator	1		58	3310-51310	Needle bearing 10x13x13	1	
3	2850-14122	Gasket (K2867-06010)	1		59	2850-55110	Oil pump	1	
4	3330-14121	Gasket (K2867-06010)	1		60	2851-55120	Worm (7T)	1	
5	2850-14212	Gasket, Cylinder (K2867-06010)	1		61	2850-55211	Washer	1	
6	2850-14220	Bolt, Cylinder M5x70	4		62	2670-55220	Seal	1	
7	2869-15110	Muffler	1		63	2670-55410	Screw M4x14	2	
8	2850-15211	Gasket, Muffler	1		64	2850-55611	Pump cover	1	
9	3356-15220	Bolt, Muffler	2		65	2670-55410	Screw M4x14	3	
10	2867-15310	Stay	1		66	2867-71100	Rotor assembly	1	
11	2850-15230	Nut, Muffler M5	2		67	2850-71120	• Pole	2	
12	2850-21004	Crankcase Assembly	1		68	3350-71131	• Spring	2	
13	3356-21130	• Spring Pin 5.2x10	3		69	2850-71140	• Screw M5x12	2	
14	2850-21240	• Bearing 12x32x10	2		70	2850-71151	• Washer 5x10x10	2	
15	04065-03212	• Snap Ring ø32	1		71	2850-71302	Coil Assembly	1	
16	2169-21210	• Oil Seal 12x22x7	1		72	2850-71202	• Coil Complete	1	
17	2630-43150	• Oil Seal 12x32X5.5	1		73	2850-71220	•• Cord	1	
18	2616-21230	• Stud M8	2		74	2670-71230	•• Grommet	1	
19	3330-23121	• Valve, Oil	1		75	2850-72110	• Plug cap	1	
20	2850-21250	• Valve Seal	1		76	1400-72121	• Spring	1	
21	2850-21312	• Gasket, Case (K2867-06010)	1		77	2850-71320	• Tube 6x7x80	1	
22	2850-21320	Screw M5x30	6		78	1630-73110	Spark plug (RCJ7Y)	1	
23	2869-41110	Piston ø40.5	1		79	2670-14220	Screw M5x20	2	
24	2660-41211	Piston Ring ø40.5	1		80	0263-20550	Screw M5x50	1	
25	2850-41310	Piston Pin7x10x31.5	1		81	2867-53220	Nut	1	
26	1300-41320	Snap Ring	2		82	2867-82320	Grommet	1	
27	2850-41410	Needle Bearing 10x14x10.7	1						
28	2850-41510	Washer	2						
29	2850-42002	Crankshaft Complete	1						
30	2850-31103	Cylinder cover complete	1						
31	2856-31120	• Cap, Cylinder cover	1						
32	2810-83410	• Grommet, Air cleaner	1						
33	3356-31152	• Grommet, Cylinder	1						
34	2670-14320	Screw M5x14	4						
35	2869-31510	Label	1						
36	2850-82411	Choke rod	1						
37	2850-82421	Grommet, Choke	1						
38	2850-83100	Air cleaner complete	1						
39	2850-83303	Cleaner cover complete	1						
40	2841-83320	• Knob	1						
41	2850-23101	Oil pipe complete	1						
42	2670-23131	• Oil filter	1						
43	3310-82230	• Clip	1						
44	2850-23211	Oil pipe, out let	1						
45	2850-25411	Guide Plate(A)	1						
46	2670-25430	Screw M4x10	1						
47	2841-31800	Oil cap assembly	1						
48	2630-31820	• Gasket, cap	1						
49	1000-43240	Key	1						
50	0290-20820	Washer	1						
51	3350-43231	Nut M8	1						
52	2850-51201	Clutch assembly	1						
53	2850-51211	• Plate	1						
54	3317-51220	• Clutch shoe	3						
55	3317-51231	• Spring	1						
56	3317-51240	• Boss(B)	1						

Fig.2 BREAKING, STARTING, FUELING SYSTEMS

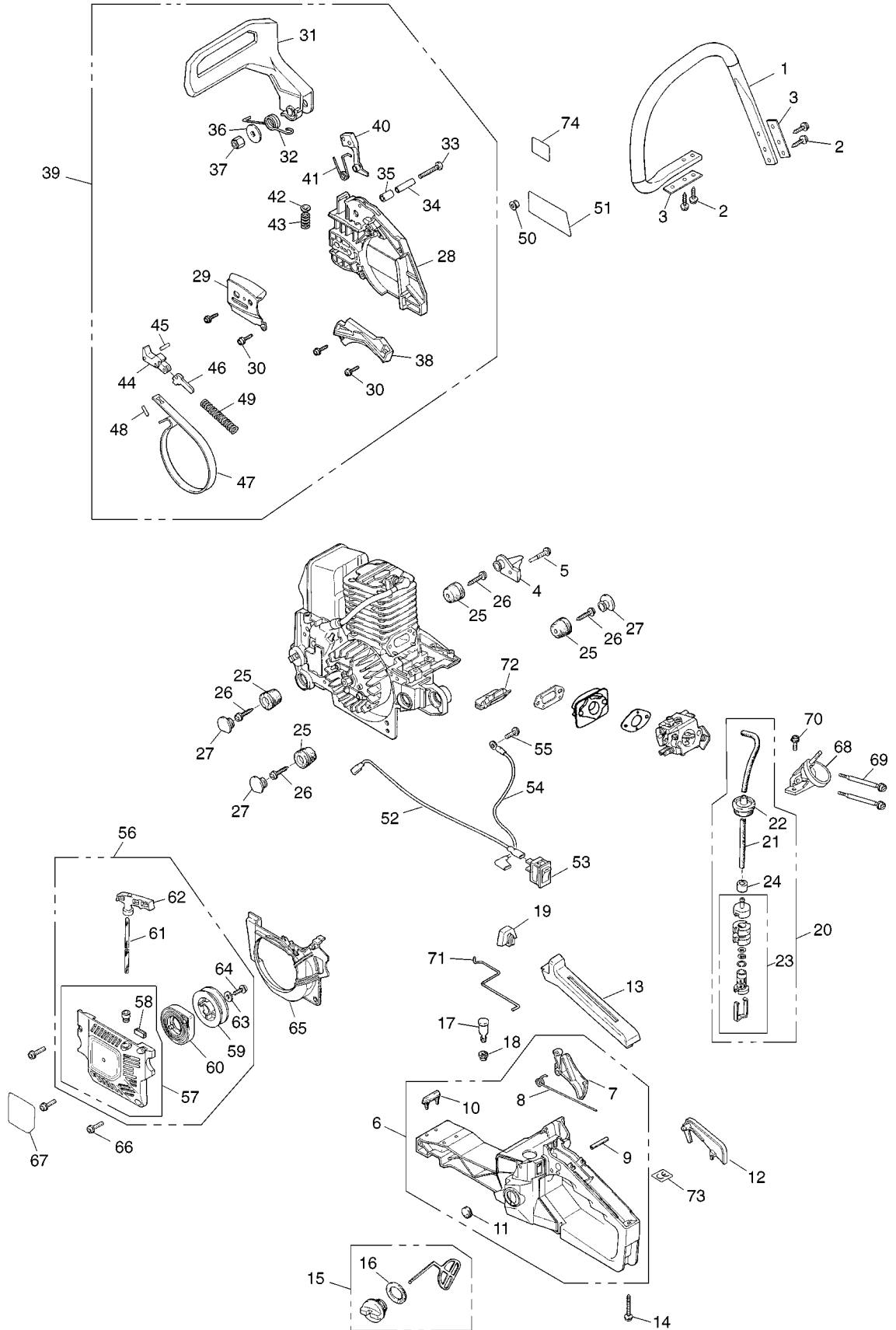


Fig.2 BREAKING, STARTING, FUELING SYSTEMS

Key#	PART NUMBER	DESCRIPTION	Q'TY /UNIT	NOTE	Key#	PART NUMBER	DESCRIPTION	Q'TY /UNIT	NOTE
1	2851-32111	Left handle	1		57	2850-75102	• Recoil case complete	1	
2	2660-32210	Screw M5x27	4		58	2850-75150	•• Cushion	1	
3	2851-32180	Plate	2		59	2850-75211	• Reel	1	
4	2850-25211	Chain catcher	1		60	2850-75301	• Spring complete	1	
5	2850-25220	Screw, Stopper M5x33	1		61	3317-75410	• Rope	1	
6	2850-33006	Right handle assembly	1		62	3330-75421	• Knob	1	
7	2850-33313	• Throttle lever	1		63	1400-86280	• Washer	1	
8	3356-33321	• Throttle spring	1		64	2671-32210	• Screw TP5x19	1	
9	04025-00524	• Spring pin 5.2x24	1		65	2850-75611	Fan cover	1	
10	2670-33280	• Damper(A)	1		66	2670-14320	Screw M5x14	3	
11	2850-33370	• Helper, Magnetto	1		67	2869-75131	Label, recoil	1	
12	3356-33351	Arm	1		68	2850-82114	Manifold	1	
13	2850-34111	Grip cover	1		69	2867-82210	Bolt M4x70	2	
14	2660-32210	• Screw M5x27	1		70	2670-14320	Screw M5x14	1	
15	2670-34401	Tank cap assembly	1		71	2850-82511	Throttle rod	1	
16	2670-34430	• Gasket, Tankcap	1		72	2850-82522	Grommet, throttle	1	
17	2850-34501	Breather Assembly	1		73	2634-31420	Label (CE)	1	
18	3317-85120	Grommet	1		74	2874-54990	Label brake	1	
19	2850-34150	Helper, rear	1						
20	2851-34301	Fuel pipe assembly	1						
21	2850-34311	• Fuel pipe	1						
22	2851-34320	• Grommet	1						
23	3302-85400	• Filter assembly	1						
24	2850-34350	• Collar	1						
25	2616-35141	Damper	4						
26	2670-35120	Screw M5x16	4						
27	2856-35180	Damper cap	3						
28	2850-53113	• Chain cover	1						
29	2850-53250	• Guide plate (B)	1						
30	2670-54630	• Screw M4x12	4						
31	2850-54110	• Front guard	1						
32	2850-54120	• Return spring	1						
33	2850-54130	• Screw M5x40	1						
34	2850-54140	• Spacer inner	1						
35	2850-54211	• Spacer outer	1						
36	3330-75411	• Washer	1						
37	3310-53331	• Nut(B) M5 Nylon nut	1						
38	2850-54623	• Spring cover	1						
39	2869-54000	Chain brake assembly	1						
40	2851-54221	• Weight	1						
41	2872-54230	• Spring	1						
42	2851-54260	• Stopper plate	1						
43	2851-54270	• Spring	1						
44	2851-54301	• Brake lever complete	1						
45	2851-54350	• Roller	1						
46	2670-54410	• Slide arm	1						
47	2851-54510	• Brake band	1						
48	3356-24140	• Roller	1						
49	2670-54610	• Brake spring	1						
50	3350-53410	Nut M8	2						
51	2869-53150	Label, Chain cover	1						
52	2850-71513	Switch cord	1						
53	2850-74102	Swiitch assembly	1						
54	2850-74213	Cord	1						
55	2670-14130	Screw M5x10	1						
56	2850-75003	Starter assembly	1						

Fig.3 CARBURETOR

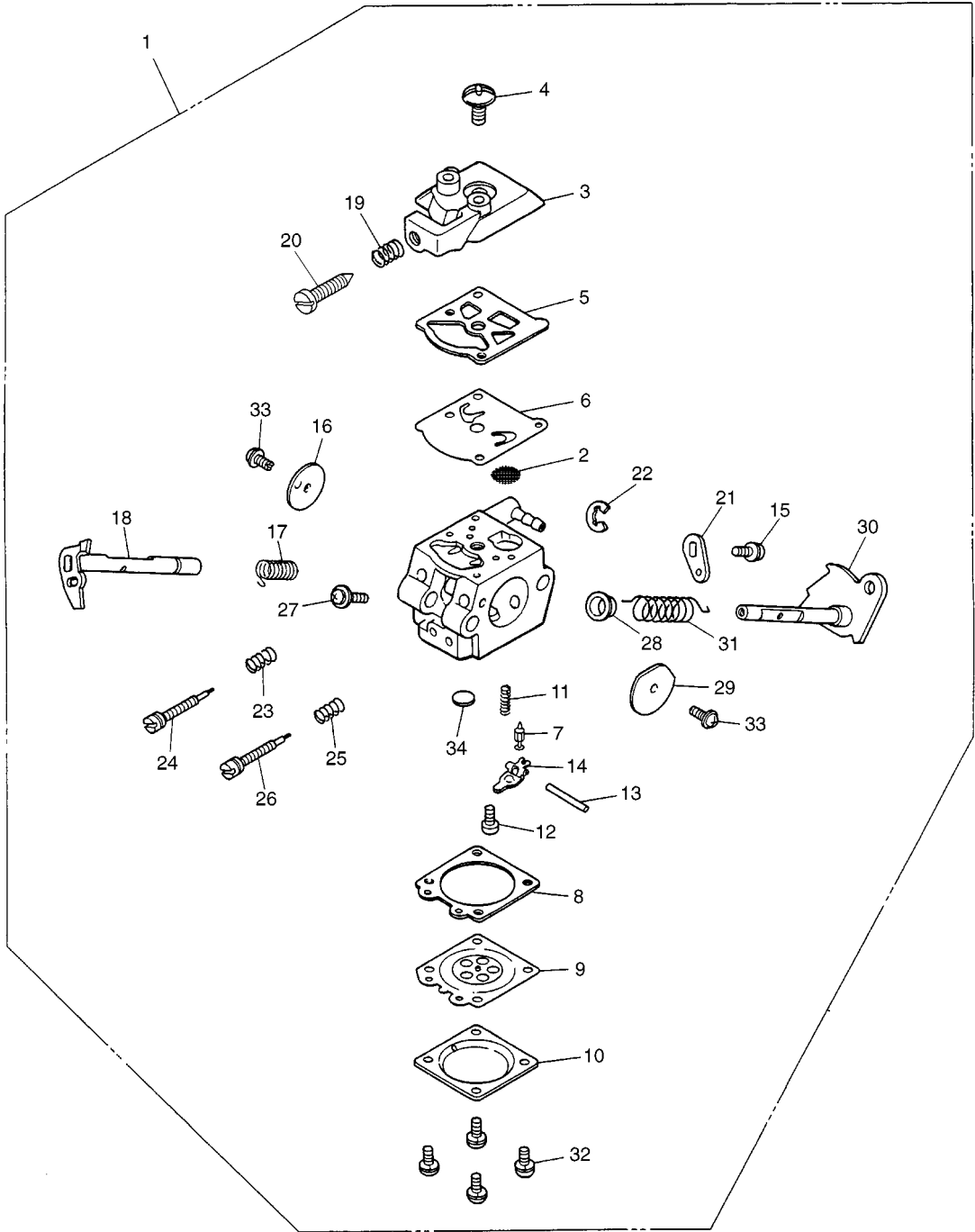


Fig.3 CARBURETOR

Key#	PART NUMBER	DESCRIPTION	Q'TY /UNIT	NOTE	Key#	PART NUMBER	DESCRIPTION	Q'TY /UNIT	NOTE
1	2869-81000	Carburetor assembly	1						
2	3306-81380	• Screen	1						
3	2850-81120	• Pump cover	1						
4	3310-81130	• Screw	1						
5	3304-81140	• Gasket, pump	1						
6	3304-81150	• Diaphragm, pump	1						
7	3356-81310	• Valve	1						
8	2850-81290	• Gasket	1						
9	3310-81260	• Diaphragm	1						
10	3310-81280	• Cover	1						
11	2867-81270	• Spring	1						
12	3310-81240	• Screw M lever pin	1						
13	3310-81250	• Pin, lever	1						
14	3310-81230	• Lever	1						
15	3310-81360	• Screw, Shutter	1						
16	3356-81340	• Throttle valve	1						
17	2670-81410	• Throttle spring	1						
18	2850-81371	• Throttle shaft	1						
19	3350-81380	• Idle spring	1						
20	2630-81330	• Idle screw	1						
21	2670-81440	• Throttle lever	1						
22	1148-81390	• Ring	1						
23	1491-81160	• L needle spring	1						
24	2869-81170	• L needle	1						
25	3080-81320	• H needle spring	1						
26	2850-81330	• H needle	1						
27	2850-81190	• Screw	1						
28	2850-81430	• Bush	1						
29	2670-81450	• Choke valve	1						
30	2850-81460	• Choke shaft	1						
31	2850-81350	• Choke spring	1						
32	3310-81351	• Screw	4						
33	2880-81470	• Screw, valve	2						
34	1480-81420	• Plug	1						

Fig.4 GUIDE BAR, SAW CHAIN, TOOLS

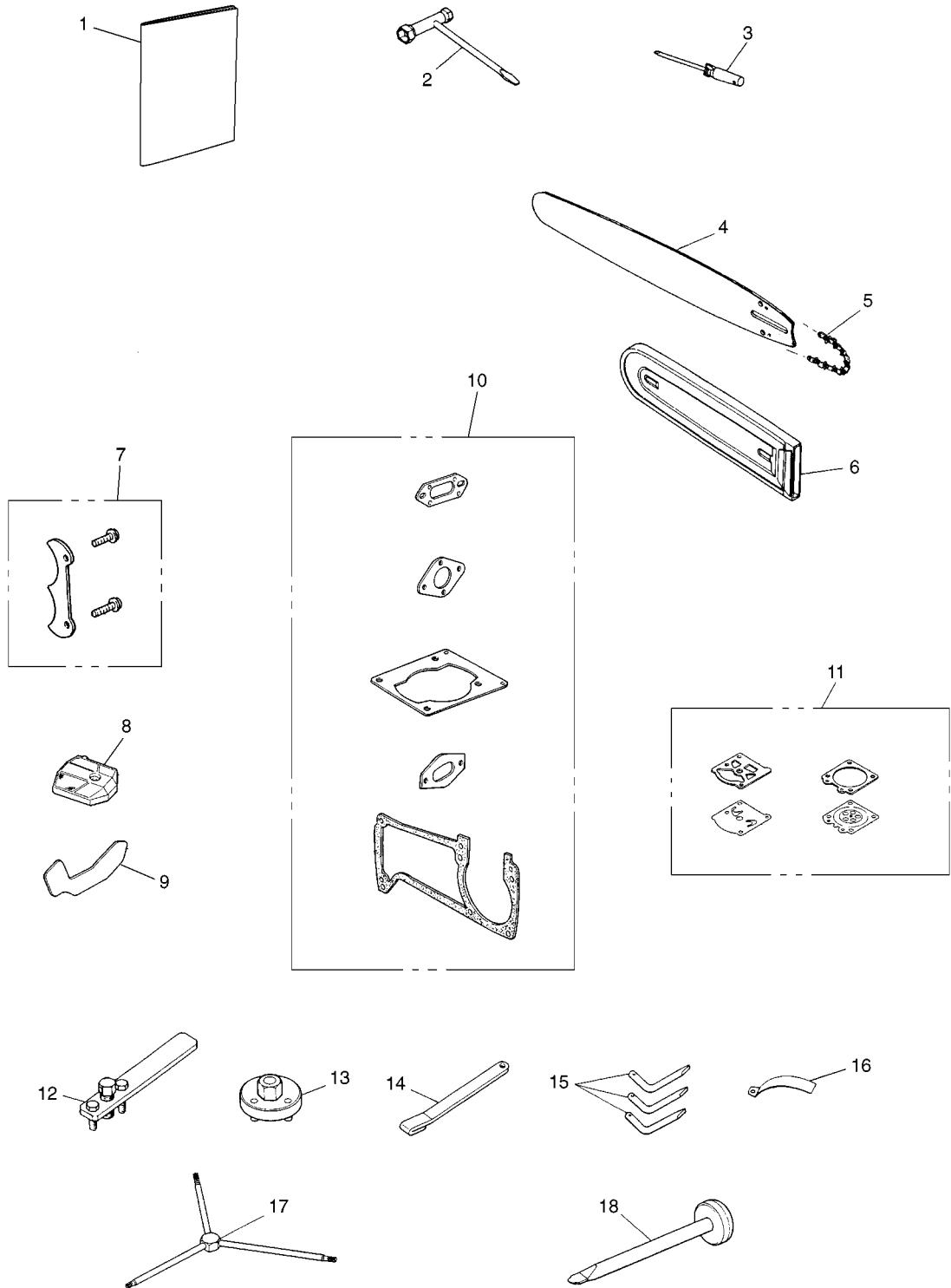


Fig.4 GUIDE BAR, SAW CHAIN, TOOLS

Key#	PART NUMBER	DESCRIPTION	Q'TY /UNIT	NOTE	Key#	PART NUMBER	DESCRIPTION	Q'TY /UNIT	NOTE
1	2869-93110	Owner's manual	1						
2	3320-91140	Plug 13x19	1						
3	2670-91150	Driver	1						
4	2939-52110	Sprocket nose bar 16"	1						
5	2939-52210	Chain 16"(95VP-66E)	1						
6	3356-97110	Protector	1						
7	2850-98100	Spike kit	1						
8	2850-98300	Air cleaner complete	1	OP					
9	2850-98210	Snow protector	1	OP					
10	2867-06010	Gasket kit	1	OP					
11	2850-06020	Gasket kit	1	OP					
12	2890-96100	Puller Assembly (for rotor)	1	OP					
13	2670-96210	Wrench (for clutch)	1	OP					
14	2670-96220	Stopper (for piston)	1	OP					
15	2670-96240	Wrench (for clutch ASSY)	3	OP					
16	3350-96240	Gauge	1	OP					
17	2670-96410	Wrench	1	OP					
18	2670-96510	Guide (for brake spring)	1	OP					