

RESERVEDELSLISTE

TEXAS kædesave

Model:

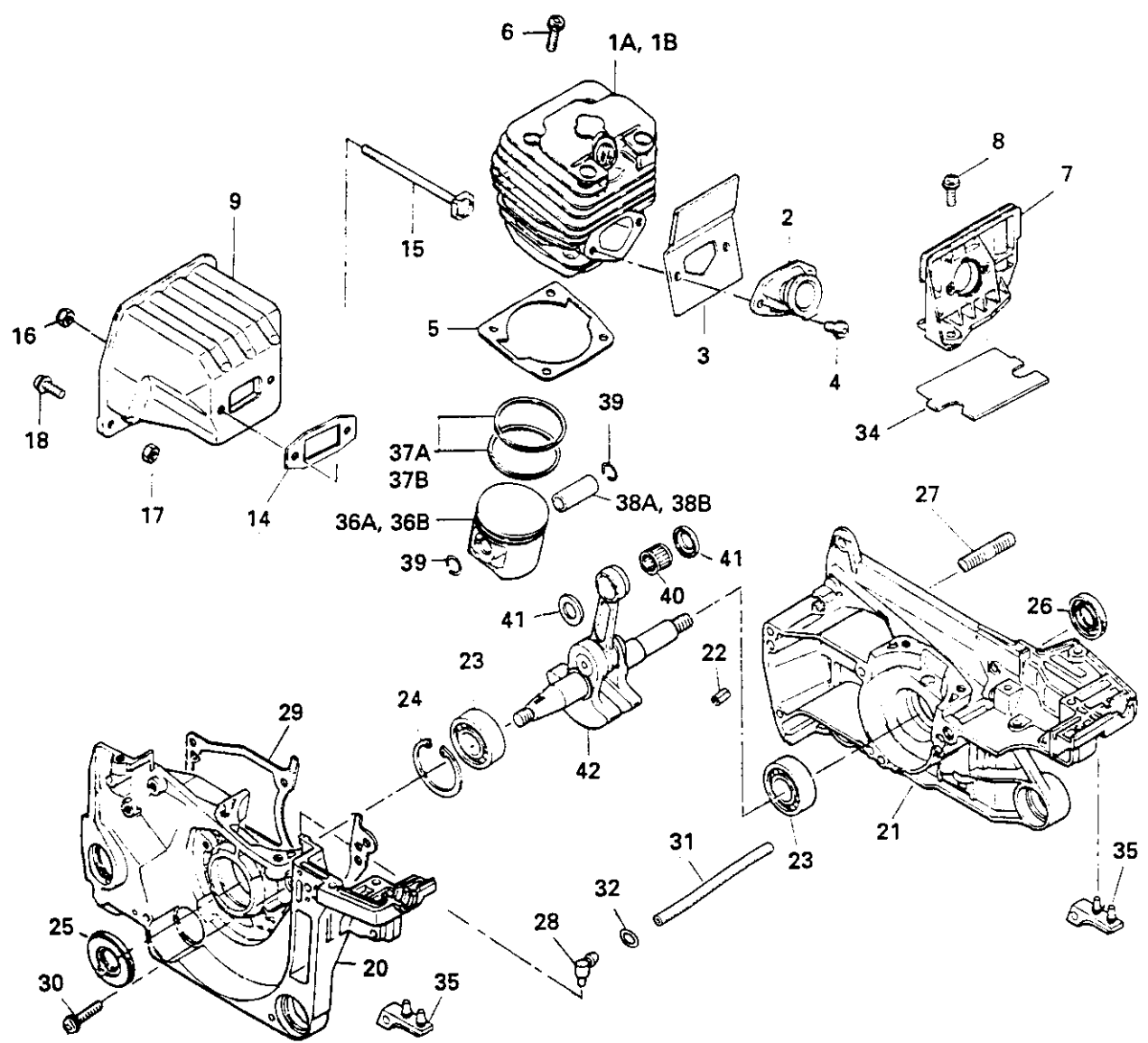
G410AVS/G410AVSH

G455AVS/G455AVSH

1990/1

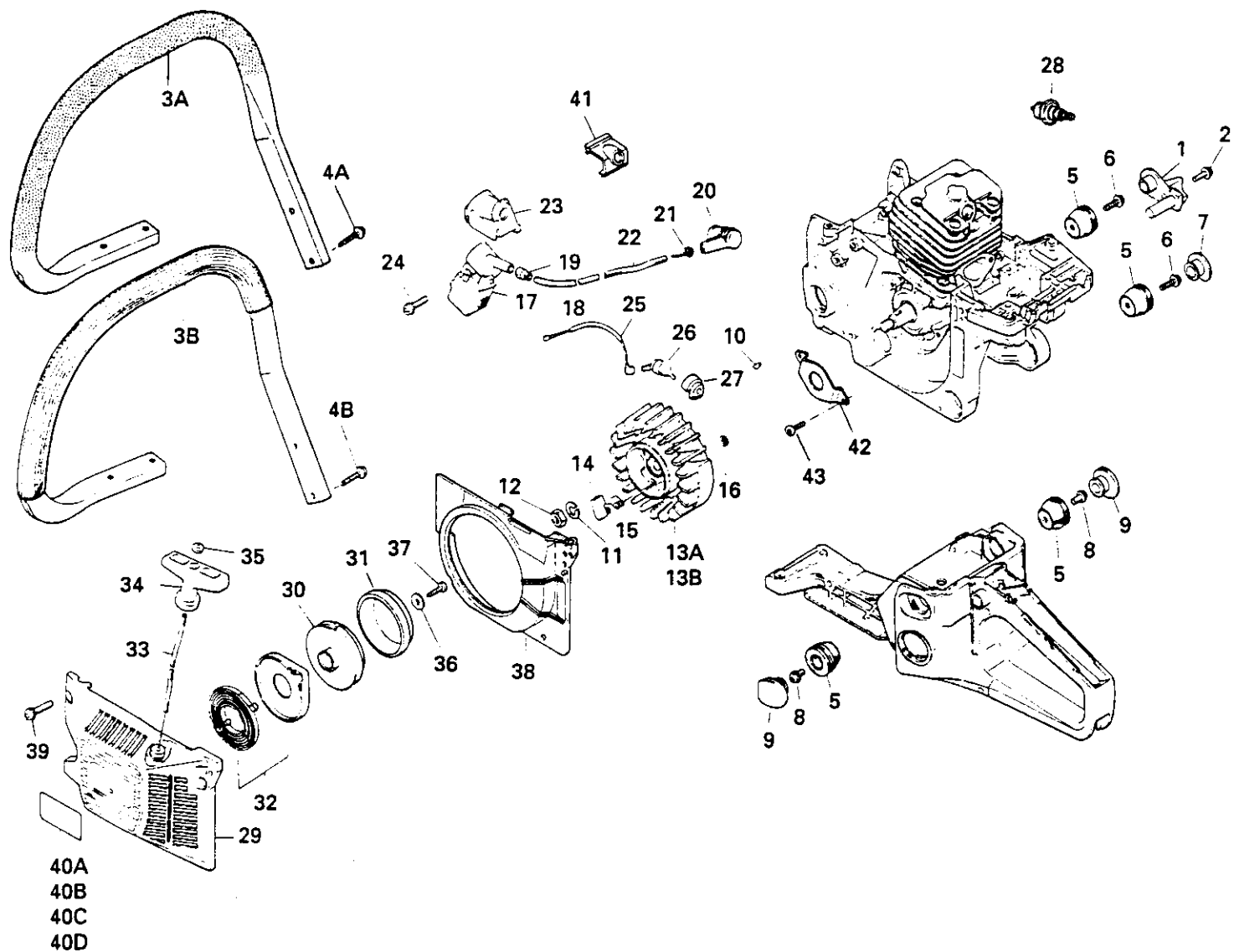
ANDREAS PETERSEN HØJBY ApS
Knullen 2 - 5260 Odense S
Tlf.: 65 95 81 80 - Fax: 65 95 86 58

Fig. 1 ENGINE BLOCK & MUFFLER



Index No.	Part Number	Description	Q'ty per Unit	Remarks	Index No.	Part Number	Description	Q'ty per Unit	Remarks
1A	2660-12111	Cylinder	1	G410AVS (H) only	34	2810-22410	Mat	1	
1B	2670-12111	Cylinder	1	G455AVS (H) only	35	2670-22510	Rear stopper	2	
2	2670-14111	Inlet pipe	1		36A	2683-41112	Piston	1	G410AVS (H) only
3	2810-14120	Gasket, inlet pipe	1	K1	36B	2670-41113	Piston	1	G455AVS (H) only
4	2670-14130	Screw, M5 x 10L	2		37A	2660-41210	Piston ring	2	G410AVS (H) only
5	2670-14210	Gasket, cylinder base	1	K1	37B	2670-41211	Piston ring	2	G455AVS (H) only
6	2670-14220	Screw, M5 x 20L	4		38A	2660-41310	Piston pin	1	G410AVS (H) only
7	2670-14311	Bracket	1		38B	3350-41310	Piston pin	1	G455AVS (H) only
8	2670-14320	Screw, M5 x 14L	2		39	3350-41320	Snap ring	2	
9	2810-15110	Muffler	1		40	1400-41410	Needle bearing	1	
14	3356-15210	Gasket, muffler	1	K1	41	2670-41510	Thrust washer	2	
15	2670-15220	Bolt, M5 x 80L	2		42	2670-42002	Crankshaft comp.	1	
16	3356-15230	Nut	2						
17	0280-10504	Nut	2						
18	2670-14130	Screw, M5 x 10L	2						
20	2810-21001	Crankcase ass'y	1	20 to 28	K1	2810-06010	Gasket kit		OP
21	.	Crankcase mag.	1	* 2810-21001					
22	.	Crankcase PTO	1	* 2810-21001					
22	3356-21130	Spring pin	3						
23	06030-06202	Bearing	2						
24	04065-03515	Snap ring	1						
25	2670-21210	Oil seal, mag	1						
26	2670-21220	Oil seal, PTO	1						
27	0250-50825	Stud	2						
28	2670-21250	Elbow	1						
29	2670-21310	Gasket, crankcase	1	K1					
30	2670-21320	Screw, M5 x 25L	5						
31	2810-22210	Pulse pipe	1						
32	3310-82230	Clip	1						

Fig. 2 FRONT HANDLE, RUBBER JOINTS, IGNITION SYSTEM & STARTER

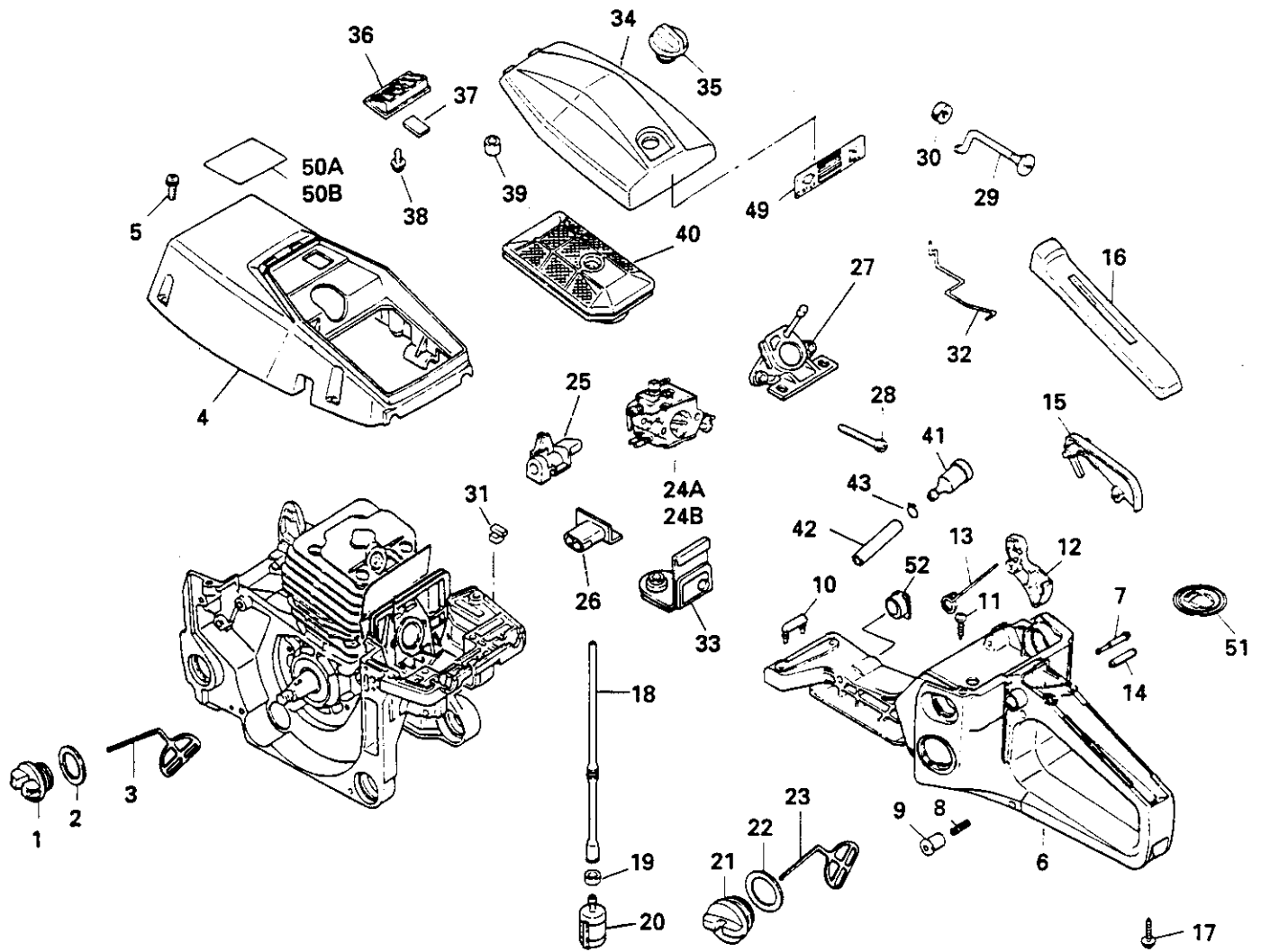


40A
40B
40C
40D

Index No.	Part Number	Description	Q'ty per Unit	Remarks
1	2670-25210	Chain catcher	1	
2	2670-14320	Screw, M5 x 14L	1	
3A	2660-32110	Left handle	1	G410AVS only
3B	2671-32100	Left handle comp.	1	G455AVS only
4A	2660-32210	Screw, 5 x 27L	4	G410AVS only
4B	2671-32210	Screw, 5 x 19L	4	All except for G410AVS
5	2670-35110	Damper	6	
6	2670-35120	Screw, 5 x 16L	4	
7	2616-35180	Cap, damper	3	
8	2670-14130	Screw, M5 x 10L	2	
9	2670-35250	Cap, damper	2	
10	1000-43240	Key	1	
11	0290-20820	Washer	1	
12	3350-43230	Nut	1	
	2670-71100	Rotor ass'y		G410AVS & G455AVS only. 13A to 16 * 2670-71100
13	*	Rotor	1	
14	1850-75220	Ratchet	2	
15	2670-71130	Return spring	2	
16	0308-00040	E-ring	2	
	2810-71301	Ignition coil ass'y		17 to 23 & 41
	2810-71201	Ignition coil comp.		17 to 19
17	*	Ignition coil	1	* 2810-71201
18	2810-71220	High tension cord	1	
19	2670-71230	Grommet	1	
20	2810-72110	Cap, spark plug	1	
21	1400-72121	Spring	1	
22	2670-71320	Tube	1	
23	2670-71310	Cover, coil	1	

Index No.	Part Number	Description	Q'ty per Unit	Remarks
24	2670-14220	Screw, M5 x 20L	2	
25	2670-71510	Cord, switch	1	
26	2810-71610	Switch	1	
27	2670-71621	Cover, switch	1	
28	3356-73110	Spark plug	1	Champion CJ7Y
	2810-75001	Starter ass'y		29 to 37
29	2670-75111	Recoil Case	1	
30	2670-75210	Reel	1	
31	2810-75221	Seal	1	
32	3317-75300	Spring comp.	1	
33	2670-75410	Rope	1	
34	3310-75421	Knob	1	
35	3310-75431	Washer	1	
36	1400-86280	Washer	1	
37	2670-35120	Screw, 5 x 16L	1	
38	2670-75611	Fan cover	1	
39	2670-14320	Screw, M5 x 16L	4	
40A	2820-75130	Label	1	G410AVS (H) only
40B	2824-75130	Label	1	G410AVS for UK only
40C	2810-75130	Label	1	G455AVS (H) only
40D	2814-75130	Label	1	G455AVS for UK only
41	2810-71250	Grommet	1	
42	2810-21270	Plate	1	G410AVS & G455AVS only.
43	0260-30410	Screw, M4 x 10L	2	G410AVS & G455AVS only.

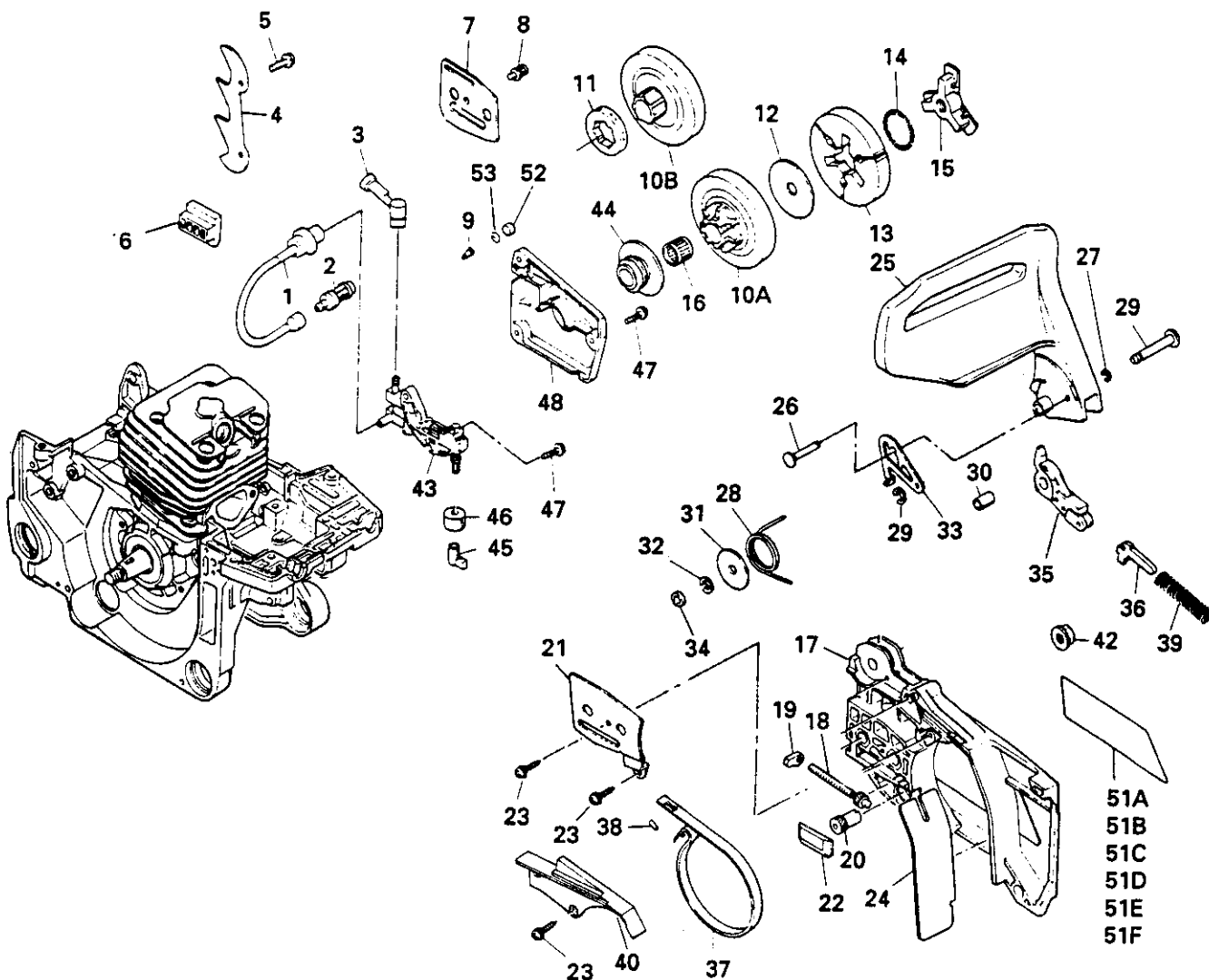
Fig. 3 REAR HANDLE, FUEL FEED LINE & AIR CLEANER



Index No.	Part Number	Description	Q'ty per Unit	Remarks
1	2630-31801	Oil cap ass'y	1	1 to 3
2	2630-31820	Cap	1	* 2630-31801
3		Gasket	1	
		Stopper	1	* 2630-31801
4	2810-31111	Cylinder cover	1	
5	2670-14320	Screw, M5 x 14L	5	
	2810-33001	Right handle ass'y		G410AVS & G455AVS only, 6 to 14 & 52
6		Right handle comp.	1	G410AVS & G455AVS only, * 2810-33001
7	3330-33250	Stopper	1	
8	3310-33262	Spring	1	
9	3310-33271	Knob	1	
10	2670-33280	Damper (A)	1	
11	2670-75520	Screw, 4 x 16L	1	
12	2670-33310	Throttle lever	1	
13	3356-33321	Spring, return	1	
14	04025-00524	Spring pin	1	
52	2810-33290	Stopper	1	
15	3356-33350	Arm	1	
16	2670-34110	Cover, grip	1	
17	2671-32210	Screw, 5 x 19L	1	
	2810-34301	Fuel pipe ass'y		18 to 20
18	2810-34311	Fuel pipe	1	
19	3317-85320	Collar	1	
20	3302-85400	Fuel filter ass'y	1	
	2670-34400	Fuel cap ass'y		21 to 23
21		Cap	1	* 2670-34400
22	2670-34430	Gasket	1	
23		Stopper	1	* 2670-34400

Index No.	Part Number	Description	Q'ty per Unit	Remarks
24A	2820-81002	Carburetor ass'y	1	G410AVS (H) only WT-172B
24B	2810-81002	Carburetor ass'y	1	G455AVS (H) only WT-171B
25	2810-82311	Guide, idle screw	1	
26	2810-82350	Guide, speed needles	1	
27	2810-82130	Manifold	1	
28	2670-82210	Screw, M5 x 45L	2	
29	2670-82411	Choke rod	1	
30	2670-82421	Grommet	1	
31	2670-82430	Guide	1	
32	2810-82510	Throttle rod	1	
33	2810-82520	Grommet	1	
	2810-83301	Cover comp.		34 to 39
34		Cover, air cleaner	1	* 2810-83301
35	3356-83321	Knob	1	
	2810-83500	Cleaner comp.		36 & 37
36		Cleaner, heating air	1	* 2810-83500
37	2810-83520	Seal	1	
38	1600-33130	Screw, 4 x 10L	1	
39	2810-83410	Grommet	1	
40	2810-83101	Air cleaner comp.	1	
	2670-34500	Breather ass'y		41 to 43
41	2670-34510	Breather, fuel tank	1	
42	3350-34540	pipe	1	
43	1260-85460	Clip	1	
49	2670-31210	Label, choke & switch	1	
50A	3359-83340	Label, caution	1	Except for UK
50B	3373-75510	Label, caution	1	UK only
51	3356-31160	Label, ear muff	1	

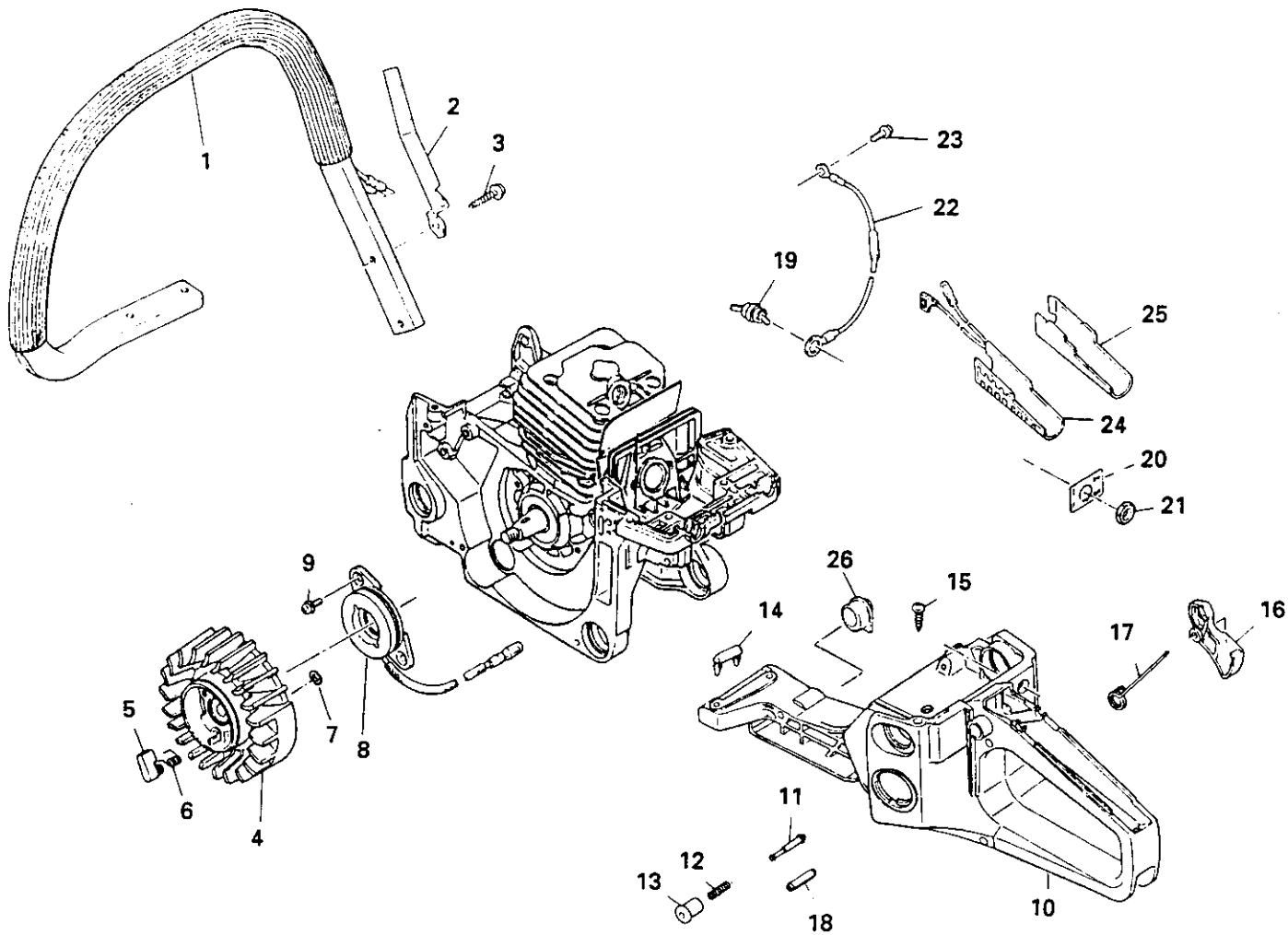
Fig. 4 OIL FEED LINE, CLUTCH & CHAIN BRAKE



51A
51B
51C
51D
51E
51F

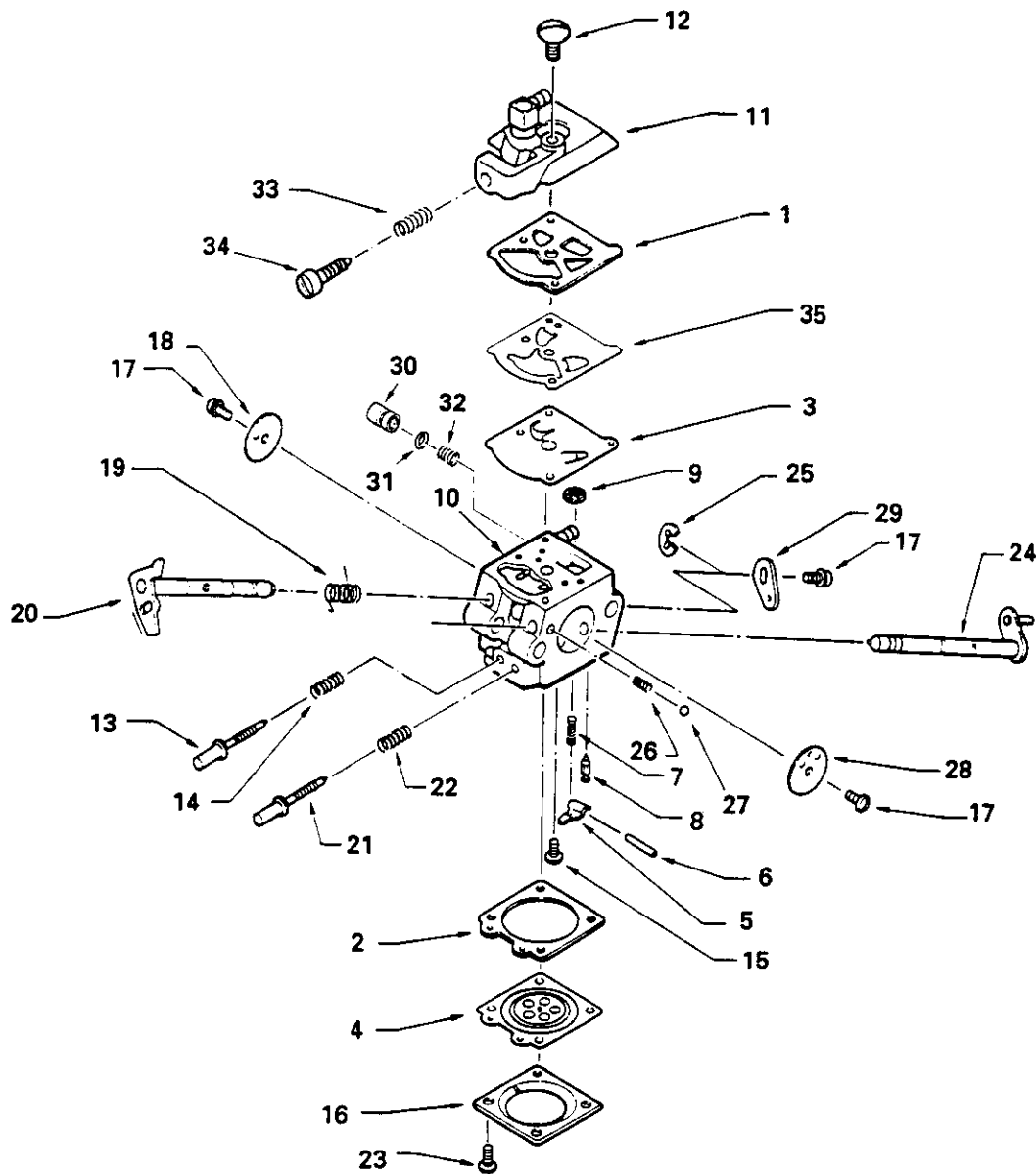
Index No.	Part Number	Description	Q'ty per Unit	Remarks	Index No.	Part Number	Description	Q'ty per Unit	Remarks
1	2670-23101	Oil pipe comp.	1	1 & 2	27	0308-00030	E-ring	1	
2	2670-23120	Oil pipe, inlet	1		28	2670-54210	Return spring	1	
	2670-23131	Oil filter	1		29	2670-54220	Pin	1	
3	2670-23210	Oil pipe, outlet	1		30	2670-54231	Spacer	1	
4	2670-25310	Spike bumper	1		31	3238-15230	Washer	1	
5	2670-14320	Screw, M5 x 14L	2		32	0308-00040	E-ring	2	
6	2670-25410	Chain guide	1		33	2670-54241	Stopper plate	1	
7	2670-25422	Base plate	1		34	2810-54260	Spacer	1	
8	2670-25430	Screw, M4 x 10L	1		35	2670-54300	Brake lever comp.	1	
9	3330-23121	Breather valve	1		36	2670-54410	Slide arm	1	
10A	2672-51110	Clutch drum	1	G410AVS (H) only. 325 x 7T	37	2670-54510	Brake band	1	
10B	2670-51110	Clutch drum	1	G455AVS (H) only	38	3356-24140	Roller	1	
11	3350-51121	Rim	1	G455AVS (H) only. 325 x 7T	39	2670-54610	Brake spring	1	
	2670-51200	Clutch ass'y	1	12 to 15	40	2670-54620	Cover, spring	1	
12	2670-51210	Thrust plate	1		42	3350-53410	Nut	2	
13		Clutch shoe	3	* 2670-51200		2670-55101	Oil pump ass'y		43 & 44 * 2670-55101
14	3317-51230	Clutch spring	1		43		Oil pump	1	
15		Boss, clutch	1		44	2670-55120	Worm gear	1	
16	2670-51310	Needle bearing	1		45	2670-55210	Adjuster cap	1	
	2671-54001	Chain cover ass'y	1	17 to 40	46	2670-55220	Seal	1	
17	2671-53110	Chain cover	1		47	2670-55410	Screw, M4 x 14L	5	
18	2671-53210	Screw	1		48	2670-55610	Cover, pump	1	
19	2671-53220	Nut	1		51A	2820-53120	Label	1	G410AVS only
20	2671-53230	Gear	1		51B	2824-53120	Label	1	G410AVS for UK only
21	2671-53240	Plate	1		51C	2828-53120	Label	1	G410AVSH only
22	2670-25410	Chain guide	1		51D	2810-53120	Label	1	G455AVS only
23	2670-54630	Screw, 4 x 12L	5		51E	2814-53120	Label	1	G455AVS for UK only
24	2671-53310	Protector	1		51F	2818-53120	Label	1	G455AVSH only
25	2670-54110	Front guard	1		52	3350-26220	Seal	1	
26	2670-54121	Stopper pin	1		53	3350-26230	Clip	1	

Fig.5 HANDLE HEATING SYSTEM (G410AVSH & G455AVSH ONLY)



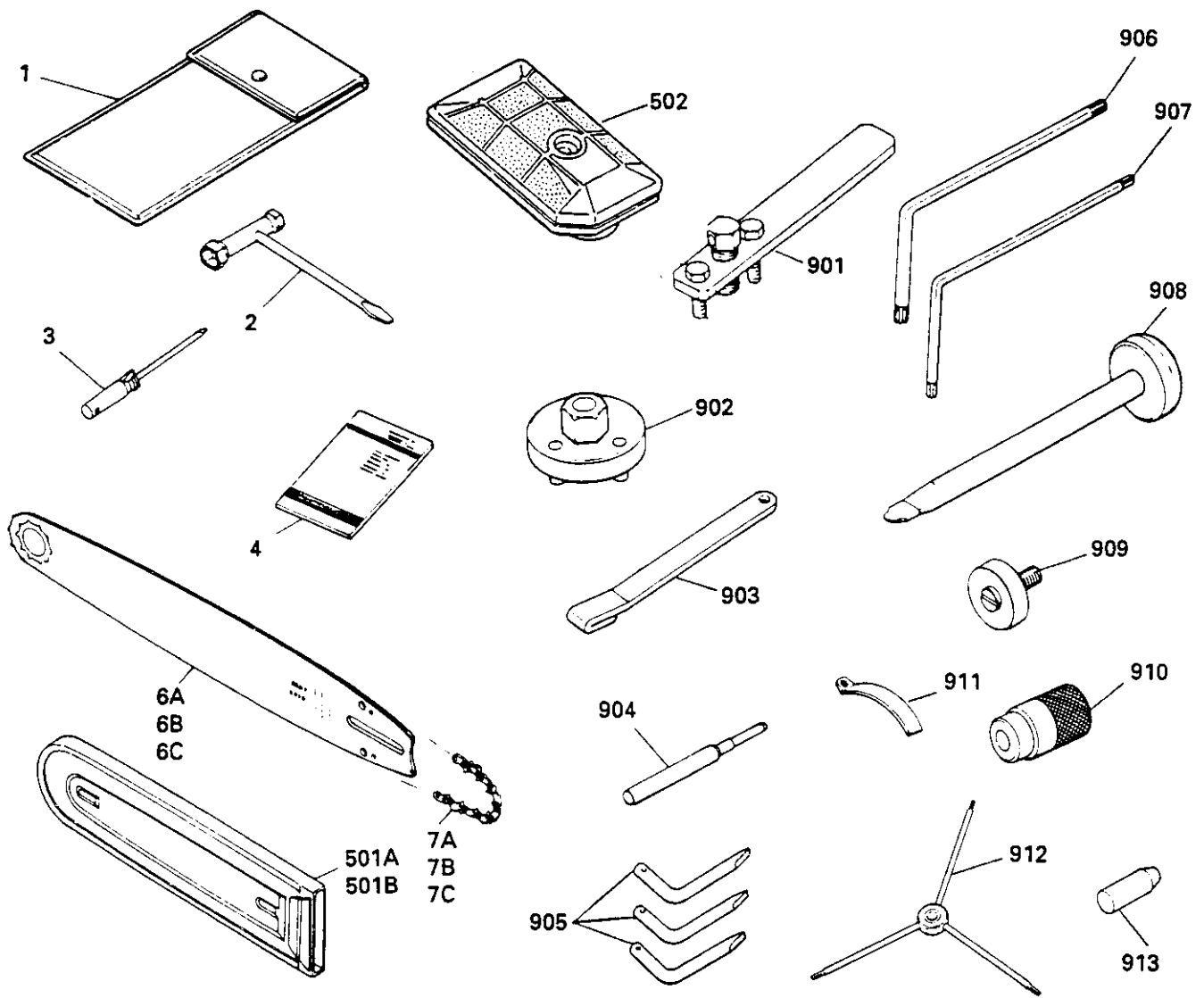
Index No.	Part Number	Description	Q'ty per Unit	Remarks	Index No.	Part Number	Description	Q'ty per Unit	Remarks
1	2655-32100	Left handle comp	1						
2	2655-32220	Plate	1						
3	2671-32210	Screw, 5 x 19L	4						
4	2655-71100	Rotor ass'y	1	4 to 7					
5	1850-75220	Ratchet	2	*2655-71100					
6	2670-71130	Return spring	2						
7	0308-00040	E-ring	2						
8	2655-71410	Heater coil	1						
9	2670-25430	Screw, M4 x 10L	2						
10	2818-33001	Right handle ass'y	1	10 to 18 & 26					
11	3330-33250	Right handle comp.	1	*2818-33001					
12	3310-33262	Stopper	1						
13	3310-33271	Spring	1						
14	3310-33271	Knob	1						
15	2670-33280	Damper (A)	1						
16	2670-75520	Screw, 4 x 16L	1						
17	2670-33310	Throttle lever	1						
18	3356-33321	Spring, return	1						
19	04025-00524	Spring pin	1						
20	2810-33290	Stopper	1						
21	2655-34800	Switch ass'y	1	19 to 21					
22	2655-34820	Switch, heater	1	*2655-34800					
23	2655-34830	Plate	1						
24	2655-34830	Nut	1						
25	2655-34850	Cord	1						
26	2670-25430	Screw, M4 x 10L	1						
	2655-34910	Heater	1						
	2655-34920	Plate	1						

Fig. 6 CARBURETOR COMPONENTS



Index No.	Part Number	Description	Q'ty per Unit	Remarks	Index No.	Part Number	Description	Q'ty per Unit	Remarks	
1	2660-06030	Repair kit		1 to 9	23	3310-81351	Screw ass'y	4		
	2670-06020	Gasket kit, large		1 to 4		24	2670-81461	Shaft ass'y, choke		1
	3304-81910	Gasket kit, small		1 & 2		25	1148-81390	E-ring		1
	.	Gasket, pump dphrgm	1	* 3304-81910		26	3350-81350	Spring, friction		1
	2	.	Gasket, metering dphrgm	1		* 3304-81910	27	3350-81220		Ball, friction
3	3304-81920	Diaphragm kit		3 & 4	28	2670-81450	Choke valve	1		
	.	Pump diaphragm	1	* 3304-81920	29	2670-81440	Lever, thrtl. shaft	1		
4	.	Metering diaphragm	1	* 3304-81920	30	2660-81510	Piston	1		
5	3310-81230	Metering lever	1		31	2660-81520	O-ring	1		
6	3310-81250	Pin, mtrg. lever	1		32	2660-81530	Spring	1		
7	1262-81270	Spring, mtrg. lever	1		33	2630-81460	Spring, IAS	1		
8	3356-81310	Inlet valve	1		34	2670-81430	Idle adjust screw	1		
9	3306-81380	Screen	1		35	2810-81610	Plate, backup	1		
10A	.	Body, carburetor	1	G410AVS (H) only. * 2820-81002						
10B	.	Body, carburetor	1	G455AVS (H) only. * 2810-81002						
11	2810-81120	Pump cover ass'y	1							
12	3310-81130	Screw	1							
13	2820-81170	Low speed needle	1							
14	1491-81160	Spring, LSN	1							
15	3310-81240	Screw	1							
16	3310-81280	Cover, diaphragm	1							
17	3310-81360	Screw	3							
18	3356-81340	Throttle valve	1							
19	2670-81410	Spring, return	1							
20	2810-81420	Shaft ass'y, thrtl. valve	1							
21	2810-81330	High speed needle	1							
22	3080-81320	Spring, HSN	1							

Fig. 7 ACCESSORIES & SERVICE TOOLS



Index No.	Part Number	Description	Q'ty per Unit	Remarks	Index No.	Part Number	Description	Q'ty per Unit	Remarks
1	2670-91001	Tool set	1	1 to 3					
	1820-91111	Bag	1						
2	3320-91140	Plug wrench	1						
3	2670-91150	Screwdriver	1						
4	2810-93110	Owner's manual	1						
6A	3644-52111	Bar 14	1	OP					
6B	3645-52111	Bar 16	1	OP					
6C	3646-52111	Bar 18	1	OP					
7A	3611-52210	Chain for 14" bar	1	OP 21BP x 60E					
7B	3612-52210	Chain for 16" bar	1	OP 21BP x 66E					
7C	3646-52210	Chain for 18" bar	1	OP 21BP x 72E					
501A	3310-97112	Protector for 14" bar	1	OP					
501B	3356-97110	Protector for 16" & 18" bars	1	OP					
502	2811-98501	Air cleaner comp., felt type	1	OP					
901	3310-96100	Pulley ass'y	1	OP					
902	2670-96210	Clutch wrench	1	OP					
903	2670-96220	Piston stopper	1	OP					
904	3350-96230	Guide, piston pin	1	OP					
905	2670-96240	Installer, clutch spring	3	OP					
906	2670-96310	Wrench, torx M5	1	OP					
907	2670-96320	Wrench, torx M4	1	OP					
908	2670-96510	Guide, brake spring	1	OP					
909	3350-96620	Guide, bearing	1	OP					
910	2670-96660	Holder, guide	1	OP					
911	3350-96240	Gauge, air gap	1	OP					
912	2670-96410	Wrench	1	OP					
913	2810-96710	Guide, oil seal	1	OP					