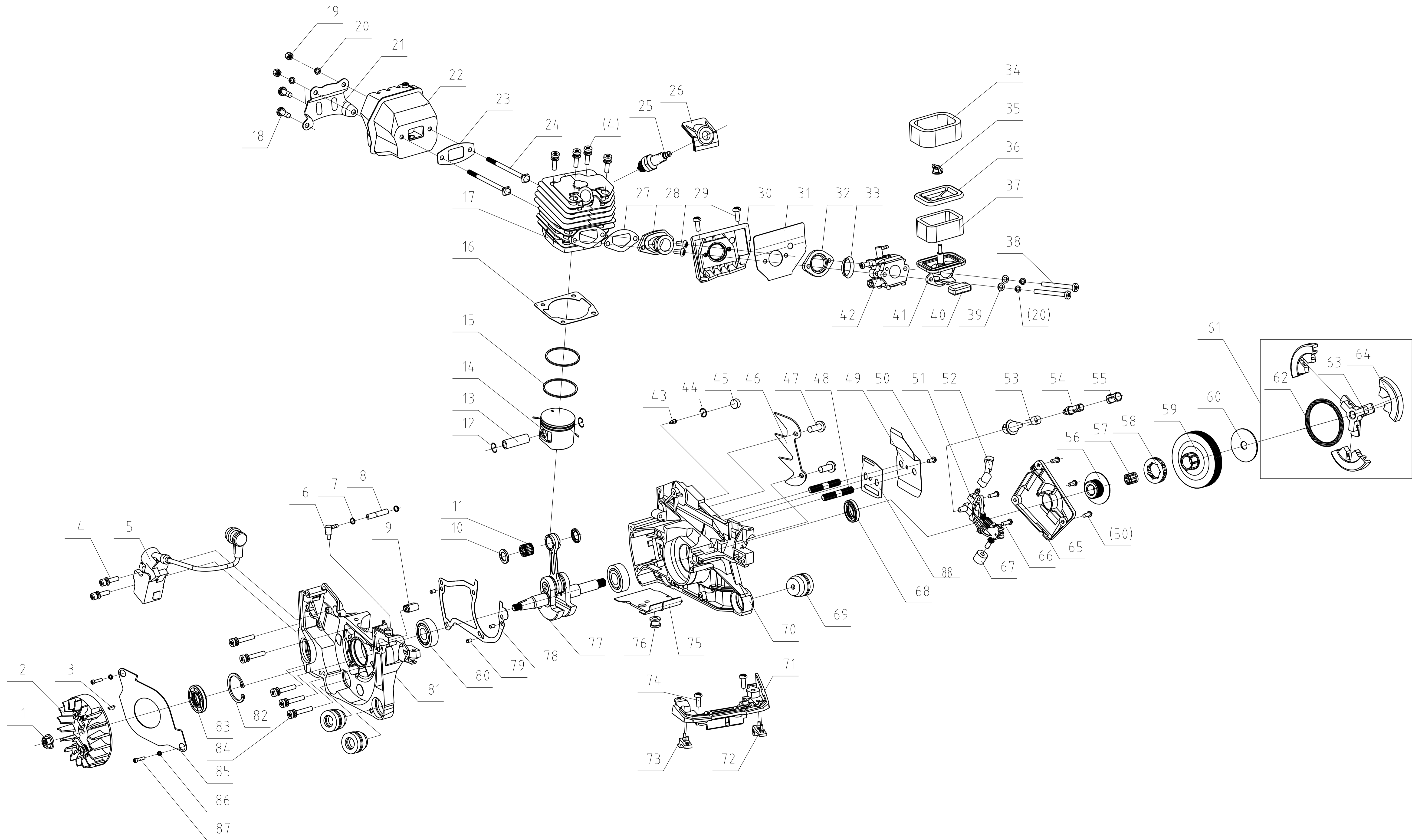


Model: XCS5600
Part Number: 90068147
Year: 2020

| POS | QTY | PARTNUMBER | BESKRIVELSE | DESCRIPTION |
|-----|-----|------------|-----------------------|------------------------------|
| 1 | 1 | 403211 | BOLT ST3.5X6 | SCREW |
| 2 | 1 | 445250 | BESLAG | PLATE |
| 3 | 1 | 441524 | KONTAKT | ENGINE SWITCH |
| 4 | 1 | 445290 | TRIGGER | EXTINCTION CONDUCTOR |
| 5 | 1 | 445291 | KABEL | GROUND LEAD |
| 6 | 1 | 441602 | PRIMER | PRIMER BULB |
| 7 | 1 | 413145 | STIFT | PIN 6X40 |
| 8 | 1 | 445292 | FJEDER | THROTTLE TRIGGER SPRING |
| 9 | 1 | 445293 | GASHÅNDTAG | THROTTLE TRIGGER |
| 10 | 2 | 445294 | GUMMI DÆMPER | SHOCK RUBBER GLAND |
| 11 | 2 | 445295 | BOLT | REAR HANDLE FIXING SCREW |
| 12 | 2 | 445296 | STØVDÆKSEL | DUST COVER |
| 13 | 1 | 445297 | BAGERSTE HÅNDTAG | REAR HANDLE |
| 14 | 1 | 445298 | OLIEDYSE | OIL NOZZLE |
| 15 | 1 | 445299 | SUGE SLANGE 2,5X5X155 | PUMP TUBE?2.5X5X155? |
| 16 | 1 | 445300 | FILTER | FUEL FILTER |
| 17 | 1 | 445301 | LÅSERING | CIRCLIP |
| 18 | 1 | 445302 | BENZINSLANGE | FUEL TUBE |
| 19 | 1 | 429670 | PROP | VALVE |
| 20 | 1 | 441603 | BØS | BALANCER ROOT |
| 21 | 1 | 445303 | LÅG | SHOCK RUBBER |
| 22 | 1 | 445304 | LÅG KPL. | OIL TANK CAP ASSEMBLY |
| 23 | 1 | 441596 | HOLDER | ANTI-DROP PLATE |
| 24 | 1 | 434341 | PAKNING 24.7×3.55 | PACKING WASHER 24.7×3.55 |
| 25 | 1 | 445246 | TANKLÅG | OIL COVER |
| 26 | 1 | 445305 | DÆKSEL | FLOW GUIDING COVER |
| 27 | 1 | 445306 | REKYLSTARTER KPL. | STARTER ASSEMBLY |
| 28 | 1 | 445307 | FJEDER | START COIL SPRING |
| 29 | 1 | 445308 | STARTER HJUL | START PLATE |
| 30 | 1 | 445309 | FJEDER FOR EASY START | EASY START-COIL SPRING |
| 31 | 1 | 445310 | DÆKSEL FJEDER | EASY START-COIL SPRING COVER |
| 32 | 1 | 445311 | SKIVE Ø5 | PLATE WASHER 5 |
| 33 | 1 | 403211 | BOLT ST3.5X6 | SCREW |
| 34 | 1 | 441622 | HÅNDTAG | HANDLE |
| 35 | 1 | 445312 | SNOR | STARTER ROPE |
| 36 | 1 | 440186 | SNØREHUL | EYELET |
| 37 | 1 | 445313 | BESLAG | L/H GUIDER |
| 38 | 1 | 445314 | STARTERHUS | START HOUSING |
| 39 | 1 | 445266 | LABEL | LABEL |
| 40 | 4 | 662082 | BOLT 4X8 | MACHINE SCREW 5X14 |
| 41 | 1 | 445315 | OLIEPROP KOMPLET | OIL TANK CAP ASSEMBLY |
| 42 | 1 | 445197 | OLIEPROP | OIL COVER |
| 43 | 1 | 434341 | PAKNING 24.7×3.55 | PACKING WASHER 24.7×3.55 |
| 44 | 1 | 445316 | KÆDE FANG | CHAIN CATCHER |
| 45 | 1 | 445317 | FJEDER | ANTI-VIBRATION SPRING |
| 46 | 1 | 445318 | HOLDER FOR FJEDER | SPRING BASE |
| 47 | 1 | 445200 | RETUR FJEDER | RESET SPRING |
| 48 | 1 | 445199 | HOLDER | RESET DEVICE |
| 49 | 2 | 445194 | BOLT | SCREW |

| POS | QTY | PARTNUMBER | BESKRIVELSE | DESCRIPTION |
|-----|-----|------------|--------------------------------|---|
| 50 | 1 | 445319 | KÆDEBREMSE HÅNDTAG | FRONT HANDLE GUARD |
| 51 | 1 | 445320 | CYLINDER DÆKSEL KOMPLET | CYLINDER SHIELD ASSEMBLY |
| 52 | 3 | 403211 | BOLT ST3.5X6 | SCREW |
| 53 | 1 | 445321 | DÆKSEL | TOP COVER AIR GUIDE SHEET |
| 54 | 1 | 445322 | ALUPAKNING | ALUMINIUM SEPTUM FOR CYLINDER SHIELD |
| 55 | 2 | 445323 | PLADE FOR LÅS | CLIP FIXING PLATE |
| 56 | 2 | 445324 | LÅS | CLIP |
| 57 | 1 | 445325 | DÆKSEL | CYLINDER SHIELD |
| 58 | 1 | 445326 | DÆKSEL FOR LUFTFILTER | AIR FILTER COVER |
| 59 | 1 | 662082 | BOLT 4X8 | MACHINE SCREW 5X14 |
| 60 | 1 | 445327 | ALUPAKNING | ALUMINIUM SEPTUM FOR CYLINDER SHIELD |
| 61 | 1 | 445328 | TOMGANGSSKRUE | IDLE ADJUSTING GUIDE SET |
| 62 | 1 | 445329 | BESLAG | THROTTLE LEVER RETAINING BRACKET |
| 63 | 1 | 445330 | CHOKERARM | CHOKE KNOB |
| 64 | 1 | 445331 | KOBLING KOMPLET | CLUTCH COVER ASSEMBLY |
| 65 | 1 | 662082 | BOLT 4X8 | MACHINE SCREW 5X14 |
| 66 | 1 | 445332 | DÆKSEL | TENSIONER COVER PLATE |
| 67 | 1 | 445333 | DÆKSEL FOR BREMSEFJEDER | BRAKE SPRING COVER |
| 68 | 3 | 413145 | STIFT | PIN 6X40 |
| 69 | 1 | 445334 | CONTROL ARM | MAIN LEVEL |
| 70 | 2 | 413145 | STIFT | PIN 6X40 |
| 71 | 1 | 445236 | FØLER | SECONDARY PULL-ROD |
| 72 | 1 | 445335 | BREMSESTANG | BRAKE CONTROL ROD |
| 73 | 1 | 445336 | BREMSEBÅND | BRAKE STRAP |
| 74 | 1 | 445337 | BREMSEFJEDER | SECONDARY BRAKE SPRING |
| 75 | 1 | 441563 | FJEDER | BRAKE SPRING |
| 76 | 1 | 445338 | KOBLINGS DÆKSEL | CLUTCH COVER |
| 77 | 1 | 445243 | KÆDESTRAMMER SKRUE | TIGHTENER SCREW |
| 78 | 1 | 445244 | KÆDESTRAMMER MØTRIK | TENSION BLOCK |
| 79 | 1 | 445239 | TANDHJUL GEAR | DRIVEN GEAR |
| 80 | 1 | 445240 | GEAR | DRIVING GEAR |
| 81 | 2 | 445339 | MØTRIK OG PLANSKIVE KOMPLET | LENGTHEN NUT COMBINATION |
| 82 | 2 | 445245 | PLANSKIVE | FLAT WASHER |
| 83 | 2 | 445241 | MØTRIK M8 | NUT M8 |
| 84 | 1 | 445340 | KOBLINGSHUS | NUT PLATE |
| 85 | 1 | 445341 | DÆKSEL | REAR HANDLE COVER |
| 86 | 1 | 445342 | LÅS FOR GASHÅNDTAG | THROTTLE TRIGGER LOCK- OUT |
| 87 | 1 | 445343 | GASHÅNDTAG | THROTTLE ROD |
| 88 | 1 | 445344 | HÅNDTAG | FRONT HANDLE |
| 89 | 2 | 445345 | STØVDÆKSEL | SMALL DUST COVER |
| 90 | 1 | 445348 | SVÆRD 208PXBK095 20" | GUIDE BAR 208PXBK095 |
| 91 | 1 | 40-280 | TEX-KÆDE 280 | TEX CHAIN 280 (78LINKS/1.5MM/.0325) |
| 92 | 1 | 445347 | BESKYTTELSE FOR SVÆRD | GUIDE BAR COVER |



| POS | QTY | PARTNUMBER | BESKRIVELSE | DESCRIPTION |
|-----|-----|------------|------------------------------|--|
| 1 | 1 | 406139 | SVINGHJULSMØTRIK M8X1 | NUT |
| 2 | 1 | 445351 | SVINGHJUL | ROTATOR |
| 3 | 1 | 413163 | NOT 3X3.5X10 | KEY 3X3.5X10 |
| 4 | 2 | 429546 | MASKINSKRUE M5X20 | SCREW GB/T2671.2 |
| 5 | 1 | 445352 | TÆNDSPOLE | IGNITION |
| 6 | 1 | 441511 | VINKEL | ELBOW |
| 7 | 2 | 440198 | LÅSERING | JUMP RING |
| 8 | 1 | 445284 | BENZINSLANGE 2,5X6X115 | OIL TUBE 2.5×6×115 |
| 9 | 1 | 445353 | JUSTERSTYKKE | IDLE ADJUSTING GUIDE SET |
| 10 | 2 | 445410 | NÅLELEJERING | NEEDLE BEARING RING |
| 11 | 1 | 445355 | NÅLEKRANS 11X15X12.5 | NEEDLE BEARING ?11×? 15×12.5 |
| 12 | 2 | 445356 | LÅSERING | CIRCLIP |
| 13 | 1 | 445411 | KRYDSPIND | PISTON PIN |
| 14 | 1 | 445412 | STEMPEL | PISTON |
| 15 | 2 | 445413 | STEMPELRING | PISTON RING |
| 16 | 1 | 445360 | CYLINDER PAKNING | CYLINDER GASKET |
| 17 | 1 | 445414 | CYLINDER | CYLINDER |
| 18 | 2 | 662082 | BOLT 4X8 | MACHINE SCREW 5X14 |
| 19 | 2 | 445362 | MØTRIK M5 | NUT M5 |
| 20 | 2 | 403343 | FJEDERSKIVE | SPRING COLLAR |
| 21 | 1 | 445363 | PLADE FOR Udstødning | MUFFLER COVER |
| 22 | 1 | 445415 | UDSTØDNING | MUFFLER |
| 23 | 1 | 445416 | UDSTØDNINGSPAKNING | MUFFLER GASKET |
| 24 | 2 | 445366 | FORBINDELSBOLT UDSTØDNING | MUFFLER CONNECTING SCREW |
| 25 | 1 | 429581 | TÆNDRØR RCJ7Y CHAMPION | SPARK PLUG |
| 26 | 1 | 445367 | TÆNDRØR HÆTTE | SPARK PLUG CAP |
| 27 | 1 | 445368 | PAKNING | AIR INTAKE TUBE SEALING PLATE |
| 28 | 1 | 445369 | INDSUGNINGSRØR | INTAKE PIPE |
| 29 | 4 | 662082 | BOLT 4X8 | MACHINE SCREW 5X14 |
| 30 | 1 | 445370 | STØTTERAMME KARBURATOR | CARBURETTOR SUPPORTING FRAME |
| 31 | 1 | 445371 | PAKNING INDSUGNING | SEALING PLATE OF AIR INTAKE SUPPORT |
| 32 | 1 | 445372 | FLANGE INDSUGNING | AIR INTAKE FLANGE |
| 33 | 1 | 445373 | STØTTERING | SUPPORT RING |
| 34 | 1 | 445374 | LUFTFILTER SKUM | AIR CLEANER FOAM |
| 35 | 1 | 445375 | LÅSEMØTRIK LUFTFILTER | AIR FILTER LOCK NUT |
| 36 | 1 | 445376 | COVER LUFTFILTER | AIR FILTER COVER |
| 37 | 1 | 445377 | LUFTFILTER | AIR FILTER |
| 38 | 2 | 662082 | BOLT 4X8 | MACHINE SCREW 5X14 |
| 39 | 2 | 403342 | SKIVE 4 | WASHER |
| 40 | 1 | 445378 | LUFTINDTAG PUDE | CUSHION OF AIR INTAKE SOCKET |
| 41 | 1 | 445379 | LUFTFILTERHUS | AIR FILTER BASE |
| 42 | 1 | 445380 | KARBURATOR | CARBURETTOR |
| 43 | 1 | 445222 | DYSE | AERATION JET |
| 44 | 1 | 445381 | LÅSERING | AERATION JET CIRCLIP |
| 45 | 1 | 445382 | BLOK | SPONGE TRANSITION BLOCK |
| 46 | 1 | 441598 | BARKSTED | SPIKED BUMPER |

| POS | QTY | PARTNUMBER | BESKRIVELSE | DESCRIPTION |
|-----|-----|------------|----------------------|---------------------------------|
| 47 | 2 | 662082 | BOLT 4X8 | MACHINE SCREW 5X14 |
| 48 | 2 | 413178 | PINBOLT M8-M8X26-8.8 | PIN BOLT M8-M8X26-8.8 |
| 49 | 1 | 445383 | SKJOLD | TENSIONER COVER |
| 50 | 1 | 662082 | BOLT 4X8 | MACHINE SCREW 5X14 |
| 51 | 1 | 445384 | OLIEPUMPE | OIL PUMP |
| 52 | 1 | 445385 | SPRØJTEDYSE | SPRAY NOZZLE |
| 53 | 1 | 445386 | OLIERØR | OIL TUBE |
| 54 | 1 | 441585 | OLIEFILTER | OIL FILTER |
| 55 | 1 | 441586 | SKRUE OLIEFILTER | OIL FILTER SCREEN |
| 56 | 1 | 445387 | KOBLINGSSKIVE | TURBINE |
| 57 | 1 | 445388 | NÅLELEJE 12X15X14.5 | NEEDLE BEARING ?12×? 15×14.5 |
| 58 | 1 | 445389 | TANDHJUL | SPROCKET |
| 59 | 1 | 445390 | KOBLINGSTROMLE | CLUTCH DRUM |
| 60 | 1 | 445391 | KOBLINGSSKIVE | WASHER FOR CLUTCH |
| 61 | 1 | 445392 | KOBLING | CLUTCH |
| 62 | 1 | 445393 | KOBLINGSFJEDER | CLUTCH SPRING |
| 63 | 1 | 445394 | KOBLINGSHOLDER | RETAINER |
| 64 | 3 | 445395 | KOBLINGSSKO | SHOE BLOCK |
| 65 | 1 | 445396 | DÆKSEL | COVER PLATE |
| 66 | 2 | 662082 | BOLT 4X8 | MACHINE SCREW 5X14 |
| 67 | 1 | 441540 | PAKDÅSE | SEAL |
| 68 | 1 | 445397 | PAKNING | OIL SEALING |
| 69 | 3 | 445398 | DÆMPER | CUSHION SOCKET |
| 70 | 1 | 445399 | HØJRE KRUMTAPHUS | RIGHT CRANKCASE |
| 71 | 1 | 445400 | STØTTE | TOP COVER SUPPORT |
| 72 | 1 | 445401 | HØJRE STØDDÆMPER | RIGHT SHOCK BLOCK |
| 73 | 1 | 445402 | VENSTRE STØDDÆMPER | LEFT SHOCK BLOCK |
| 74 | 2 | 662082 | BOLT 4X8 | MACHINE SCREW 5X14 |
| 75 | 1 | 445403 | STØVDÆKSEL | DUST COVER |
| 76 | 1 | 429665 | STØDDÆMPER | RUBBER BUMP |
| 77 | 1 | 445417 | KRUMTAPAKSEL | CRANKSHAFT |
| 78 | 1 | 445405 | PAKNING | CRANKCASE GASKET |
| 79 | 3 | 413145 | STIFT 3X9 | PIN 6X40 |
| 80 | 2 | 419754 | KUGLELEJE 15X35X11 | BALL BEARING 15X35X11 |
| 81 | 1 | 445406 | VENSTRE KRUMTAPHUS | LEFT CRANKCASE |
| 82 | 1 | 11GB/T8931 | BRUG 11GB/T893128 | USE |
| 83 | 1 | 445407 | OLIETÆTNINGSRING | OIL SEALING |
| 84 | 5 | 429546 | MASKINSKRUE M5X20 | SCREW GB/T2671.2 |
| 85 | 1 | 445408 | OLIETÆTNINGSØDÆMPER | OIL SEAL DAMPER |
| 86 | 2 | 403343 | FJEDERSKIVE | SPRING COLLAR |
| 87 | 2 | 662082 | BOLT 4X8 | MACHINE SCREW 5X14 |
| 88 | 1 | 445409 | PAKNING | GASKET |