

PARTS LIST

HEDGE - TRIMMAER

**HT2300A
CHT2300B**

APPLICABLE SERIAL NUMBERS: **HT2300A**

JANUARY 1995

DRIVE UNIT	504001	and up
ENGINE UNIT	500001	and up

APPLICABLE SERIAL NUMBERS: **CHT2300B**

DRIVE UNIT	504001	and up
ENGINE UNIT	500001	and up

Fig. 1 CUTTER GROUP — HT2300A

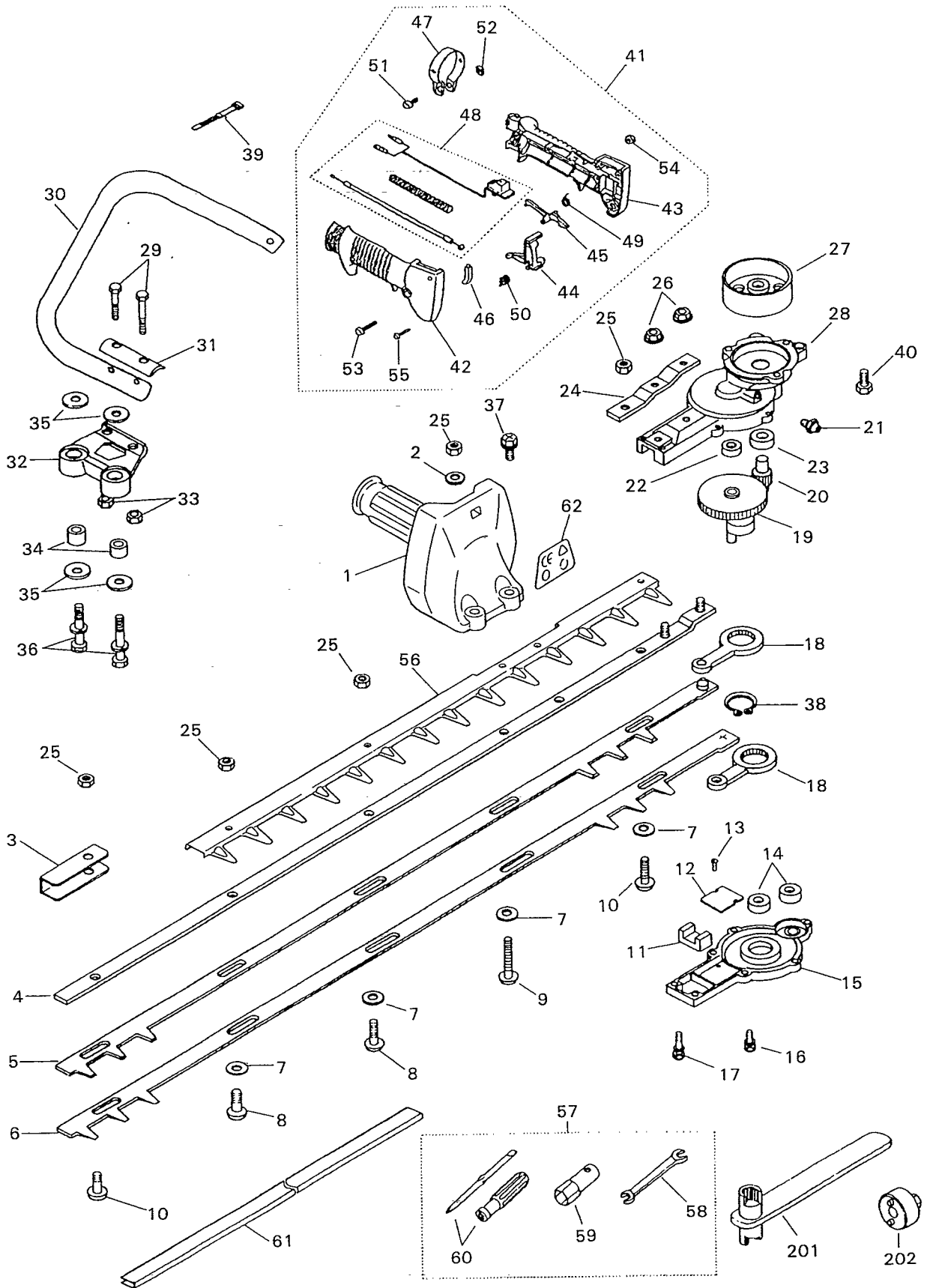


Fig.1 CUTTER GROUP — HT2300A

Key No.	Description	Part Number	Q'ty	Note
1	Right handle comp.	6844-12100	1	
2	Washer	3883-12130	1	
3	Reinforce	3880-11750	1	
4	Guide plate	3883-11611	1	
5	Upper blade	3880-11720	1	
6	Lower blade	3880-11730	1	
7	Washer	3880-11780	4	
8	Screw, 19mm long	3884-11750	2	
9	Screw, 29mm long	6095-11810	1	
10	Screw, 22mm long	3884-11660	2	
11	Felt	3873-11320	1	
12	Plate	3880-11340	1	
13	Screw	0260-00305	2	
14	Bearing	06001-00608	2	
15	Lower case	3873-11210	1	
16	Bolt	0225-10516	5	
17	Bolt	0225-10520	2	
18	Rod	3873-11500	2	
19	Gear comp.	6830-11400	1	
20	Pinion	3884-11420	1	
21	Fitting	3199-13350	1	
22	Bearing	06001-00608	1	
23	Bearing	06004-06001	1	
24	Plate	3876-11670	1	
25	Nut	3880-11790	5	
26	Nut	3880-11140	2	
27	Clutch drum	3884-11410	1	
28	Upper case	3887-11111	1	
29	Bolt	0212-50350	2	
30	Left handle	6835-13110	1	
31	Plate	6095-13310	1	
32	Bracket	6095-13320	1	
33	Nut	3876-14470	2	
34	Collar	6095-13330	2	
35	Washer	6095-13360	4	
36	Bolt	0225-10625	2	
37	Bolt	3883-12140	1	
38	Snap ring	04064-02512	1	
39	Band	3880-13350	1	
40	Bolt	0225-10614	3	
41	Lever ass'y	6835-13200	1	
42	Grip, right	6835-13210	1	
43	Grip, left	6835-13220	1	
44	Lever, throttle	1638-81430	1	
45	Lever, safety	1638-84140	1	
46	Lock	1638-84150	1	
47	Band	1638-84160	1	
48	Cable comp.	6835-13300	1	
49	Spring	1638-84170	1	
50	Spring	1638-84180	1	
51	Screw	0263-60620	1	
52	Nut	1638-84190	1	
53	Screw	0260-60535	1	
54	Nut	1638-84210	1	
55	Screw	1638-84220	1	
56	Blade Guard	6844-11910	1	
57	Tool set	1111-91003	1	
58	Spanner	3540-91120	1	
59	Socket	1110-91320	1	
60	Screwdriver	1030-91340	1	
61	Cover, blade	3880-91140	1	
62	Label	6844-12190	1	
201	Wrench	3880-95020	(1)	Optional part
202	Wrench	3880-95010	(1)	Optional part

Fig.2 ENGINE GROUP — HT2300A

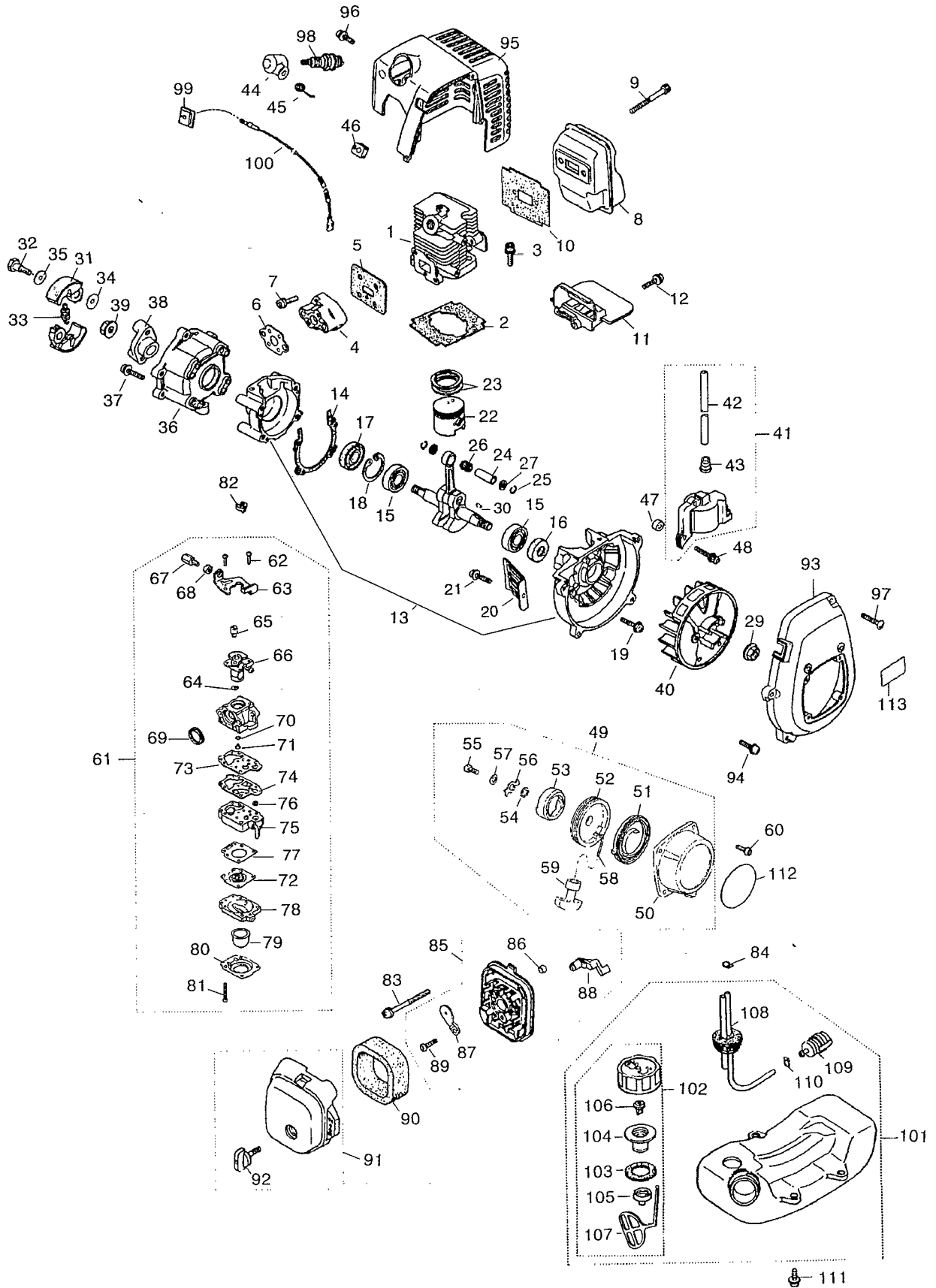


Fig.2 ENGINE GROUP — HT2300A

Key No.	Description	Part Number	Q'ty	Note	Key No.	Description	Part Number	Q'ty	Note
1	Cylinder	5600-12110	1		67	Screw	1918-81170	1	
2	Gasket, base	5500-12211	1		68	Nut	1751-81180	1	
3	Bolt, M5x22	1850-12130	2		69	Ring	1881-81130	1	
4	Insulator	5500-13161	1		70	O-ring	1751-81240	1	
5	Gasket, insulator	5500-13120	1		71	Jet	5600-81250	1	
6	Gasket, carb	5500-13130	1		72	Diaphragm	3310-81260	1	
7	Screw, M5x20	0263-90520	2		73	Gasket	1065-81410	1	
8	Muffler	5600-15110	1		74	Diaphragm	1065-81420	1	
9	Bolt, M5x50	01252-30550	2		75	Body ass'y	1794-81450	1	
10	Gasket, muffler	5600-15210	1		76	Screen	3306-81380	1	
11	Plate, muffler	5600-15220	1		77	Gasket	1850-81470	1	
12	Screw, M4x16	0263-90416	1		78	Body	1850-81490	1	
13	Crankcase comp.	5600-21100	1		79	Pump	1751-81510	1	
14	Gasket, case	5500-21140	1		80	Cover	1850-81520	1	
15	Bearing	06030-06001	2		81	Screw	1850-81530	4	
16	Oil seal	2169-21210	1		82	Cap	1601-81810	1	
17	Oil seal	1850-21220	1		83	Screw, M5x60	0263-30560	2	
18	Snap ring	04065-02812	1		84	Clip	1950-86120	1	
19	Bolt, M5x30	01252-30530	4		85	Body ass'y	5500-82101	1	
20	Guard	5500-22110	1		86	Sleeve	1970-82190	2	
21	Screw, M5x14	0263-90514	1		87	Plate, choke	5500-82131	1	
22	Piston	5600-41111	1		88	Lever, choke	5500-82140	1	
23	Ring, piston	1100-41210	2		89	Screw	2630-33610	1	
24	Pin, piston	1101-41310	1		90	Element	5500-82171	1	
25	Snap ring	1260-41320	2		91	Cover ass'y	5600-82200	1	
26	Bearing	1140-41330	1		92	Knob	5500-82220	1	
27	Washer	1101-41340	2		93	Cover, fan	5600-31110	1	
28	Crankshaft comp.	5600-42001	1		94	Screw, M5x20	0263-90520	4	
29	Nut	1650-43230	1		95	Cover, engine	5600-32100	1	
30	Key	1000-43240	1		96	Screw, M5x12	1850-32160	1	
31	Shoe	1140-51110	2		97	Screw	1900-31410	1	
32	Screw	1140-51250	2		98	Spark plug	5602-73110	1	RCJ6Y
33	Spring	1970-51220	1		99	Grommet	1852-72120	1	
34	Washer	1140-51230	2		100	Cord comp.	5500-73201	1	
35	Washer	1970-51241	2		101	Tank ass'y	5606-85000	1	
36	Case, clutch	5600-52110	1		102	Cap ass'y	5606-85201	1	
37	Screw, M5x16	0263-90516	4		103	Packing	5500-85220	1	
38	Plate, clutch	5600-52150	1		104	Holder	5600-85230	1	
39	Nut	1650-43230	1		105	Cap, holder	5600-85240	1	
40	Rotor	5600-71110	1		106	Valve	5600-85250	1	
41	Coil ass'y	5501-71200	1		107	Stopper	3317-57242	1	
42	Cord	5500-71220	1		108	Pipe comp.	5500-85300	1	
43	Cap	2616-71320	1		109	Filter ass'y	3302-85400	1	
44	Cap, spark plug	1900-72111	1		110	Clip	1260-85460	1	
45	Spring	1900-72120	1		111	Screw	5500-85510	3	
46	Grommet	5500-72130	1		112	Label, recoil	5606-91120	1	
47	Spacer	5500-72150	2		113	Label, fan cover	5504-91130	1	
48	Bolt, M4x25	3310-72150	2						
49	Recoil ass'y	1861-75100	1						
50	Case, recoil	1861-75110	1						
51	Spring, spiral	1861-75120	1						
52	Reel	1861-75130	1						
53	Ratchet	1861-75141	1						
54	Washer	1861-75150	1						
55	Screw	1179-75271	1						
56	Retainer	1861-75160	1						
57	Washer	1861-75170	1						
58	Rope	1861-75180	1						
59	Knob	1490-75180	1						
60	Screw	0263-90412	4						
61	Carburetor ass'y	5600-81000	1						
62	Screw	1752-81110	2						
63	Bracket	1891-81130	1						
64	Ring	1751-81130	1						
65	Swivel	1881-81140	1						
66	Valve	5600-81150	1						

Fig. 3 CUTTER GROUP — CHT2300B

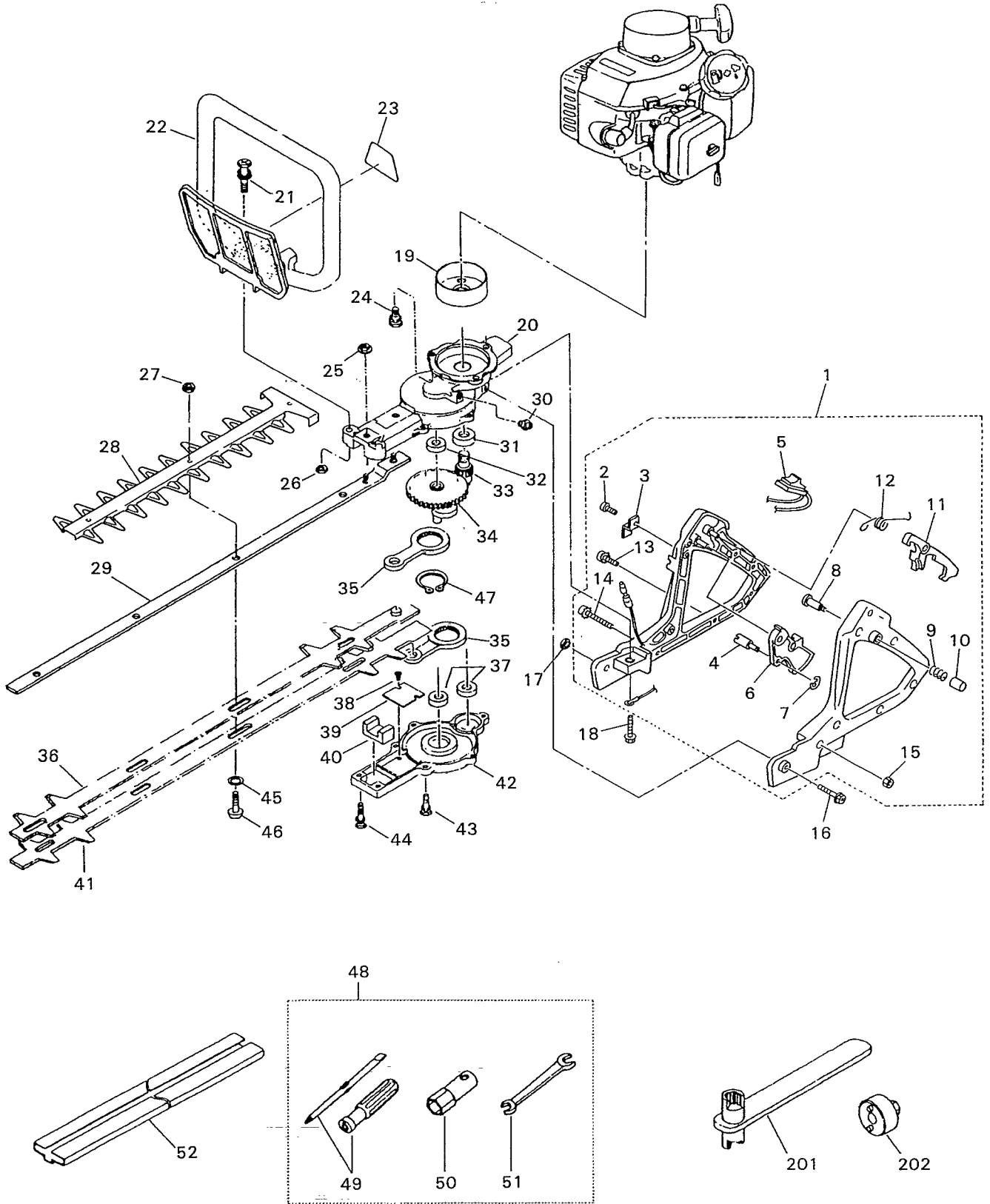


Fig.3 CUTTER GROUP — CHT2300B

Key No.	Description	Part Number	Q'ty	
1	Rear handle ass'y	6845-13100	1	
2	Screw, M4x10	3873-13180	1	
3	Plate	3873-13170	1	
4	Cable end	3873-13210	1	
5	Switch ass'y	6845-13130	1	
6	Throttle lever	3873-13221	1	
7	Snap ring	3873-13230	1	
8	Pin	3873-13140	1	
9	Spring	3873-13150	1	
10	Cap	3873-13160	1	
11	Stopper	6845-13310	1	
12	Spring	6845-13320	1	
13	Screw, M4x16	3873-13240	5	
14	Screw, M4x30	3873-13250	1	
15	Nut, M6	0280-10403	6	
16	Bolt, M6x50	0225-50650	1	
17	Nut, M6	0280-10605	1	
18	Bolt, M6x40	0225-50640	1	
19	Clutch drum	3884-11410	1	
20	Middle case	3873-11111	1	
21	Bolt, M6x35	0225-30635	2	
22	Front handle	3873-12102	1	
23	Label	6844-12190	1	
24	Bolt, M6x14	0225-10614	2	
25	Nut, M5	3880-11140	2	
26	Nut, M6	0280-10605	2	
27	Nut, M6U	3880-11790	2	
28	Blade Guard	6845-11910	1	
29	Guide plate	3873-11611	1	
30	Grease fitting	3199-13350	1	
31	Bearing, 6001 2RS	06004-06001	1	
32	Bearing, 608Z	06001-00608	1	
33	Pinion	3884-11420	1	
34	Gear comp.	6830-11400	1	
35	Rod ass'y	3873-11500	1	
36	Upper blade	3873-11720	1	
37	Bearing, 608Z	06001-00608	2	
38	Screw, M3x5	0260-00305	1	
39	Plate	3880-11340	1	
40	Felt	3873-11320	1	
41	Lower blade	3873-11730	1	
42	Lower case	3873-11210	1	
43	Bolt, M5x16	0225-10516	5	
44	Bolt, M5x20	0225-10520	2	
45	Washer	3873-11760	4	
46	Screw, M6x19	3873-11750	4	
47	Snap ring	04064-02512	1	
48	Tool set	1111-91003	1	
49	Screwdriver	1030-91340	1	
50	Socket, Hex 3/4"	1110-91320	1	
51	Spanner, 8x10	3540-91120	1	
52	Cover, blade	6836-91140	1	
201	Wrench	3880-95020	(1)	Optional part
202	Wrench	3880-95010	(1)	Optional part

Fig.4 ENGINE GROUP — CHT2300B

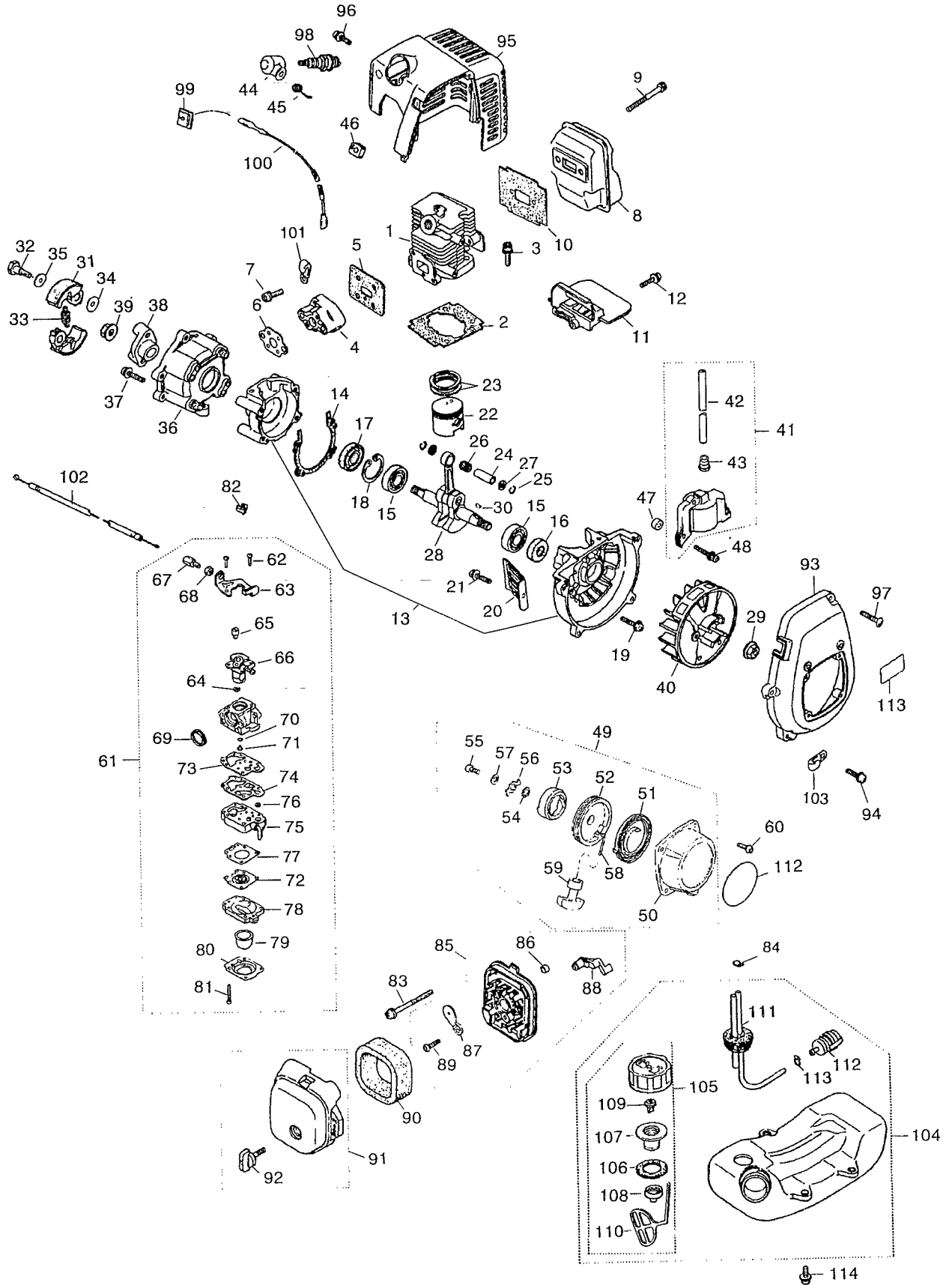


Fig.4 ENGINE GROUP — CHT2300B

Key No.	Description	Part Number	Q'ty	Note	Key No.	Description	Part Number	Q'ty	Note
1	Cylinder	5600-12110	1		67	Screw	1918-81170	1	
2	Gasket, base	5500-12211	1		68	Nut	1751-81180	1	
3	Bolt, M5x22	1850-12130	2		69	Ring	1881-81130	1	
4	Insulator	5500-13161	1		70	O-ring	1751-81240	1	
5	Gasket, insulator	5500-13120	1		71	Jet	5600-81250	1	
6	Gasket, carb	5500-13130	1		72	Diaphragm	3310-81260	1	
7	Screw, M5x20	0263-90520	2		73	Gasket	1065-81410	1	
8	Muffler	5600-15110	1		74	Diaphragm	1065-81420	1	
9	Bolt, M5x50	01252-30550	2		75	Body ass'y	1794-81450	1	
10	Gasket, muffler	5600-15210	1		76	Screen	3306-81380	1	
11	Plate, muffler	5600-15220	1		77	Gasket	1850-81470	1	
12	Screw, M4x16	0263-90416	1		78	Body	1850-81490	1	
13	Crankcase comp.	5600-21100	1		79	Pump	1751-81510	1	
14	Gasket, case	5500-21140	1		80	Cover	1850-81520	1	
15	Bearing	06030-06001	2		81	Screw	1850-81530	4	
16	Oil seal	2169-21210	1		82	Cap	1601-81810	1	
17	Oil seal	1850-21220	1		83	Screw, M5x60	0263-30560	2	
18	Snap ring	04065-02812	1		84	Clip	1950-86120	1	
19	Bolt, M5x30	01252-30530	4		85	Body ass'y	5500-82101	1	
20	Guard	5500-22110	1		86	Sleeve	1970-82190	1	
21	Screw, M5x14	0263-90514	1		87	Plate, choke	5500-82131	1	
22	Piston	5600-41111	1		88	Lever, choke	5500-82140	1	
23	Ring, piston	1100-41210	2		89	Screw	2630-33610	1	
24	Pin, piston	1101-41310	1		90	Element	5500-82171	1	
25	Snap ring	1260-41320	2		91	Cover ass'y	5600-82200	1	
26	Bearing	1140-41330	1		92	Knob	5500-82220	1	
27	Washer	1101-41340	2		93	Cover, fan	5600-31110	1	
28	Crankshaft comp.	5600-42001	1		94	Screw, M5x20	0263-90520	4	
29	Nut	1650-43230	1		95	Cover, engine	5600-32100	1	
30	Key	1000-43240	1		96	Screw, M5x12	1850-32160	1	
31	Shoe	1140-51110	2		97	Screw	1900-31410	1	
32	Screw	1140-51250	2		98	Spark plug	5602-73110	1	RCJ6Y
33	Spring	1970-51220	1		99	Grommet	1852-72120	1	
34	Washer	1140-51230	2		100	Cord comp.	5601-73200	1	
35	Washer	1970-51241	2		101	Clamp	1140-72231	1	
36	Case, clutch	5600-52110	1		102	Cable comp.	5601-83100	1	
37	Screw, M5x16	0263-90516	4		103	Clamp	1140-72231	1	
38	Plate, clutch	5600-52150	1		104	Tank ass'y	5606-85000	1	
39	Nut	1650-43230	1		105	Cap ass'y	5606-85201	1	
40	Rotor	5600-71110	1		106	Packing	5500-85220	1	
41	Coil ass'y	5501-71200	1		107	Holder	5600-85230	1	
42	Cord	5500-71220	1		108	Cap, holder	5600-85240	1	
43	Cap	2616-71320	1		109	Valve	5600-85250	1	
44	Cap, spark plug	1900-72111	1		110	Stopper	3317-57242	1	
45	Spring	1900-72120	1		111	Pipe comp.	5500-85300	1	
46	Grommet	5500-72130	1		112	Filter ass'y	3302-85400	1	
47	Spacer	5500-72150	2		113	Clip	1260-85460	1	
48	Bolt, M4x25	3310-72150	2		114	Screw	5500-85510	3	
49	Recoil ass'y	1861-75100	1		115	Label, recoil	5608-91120	1	
50	Case, recoil	1861-75110	1		116	Label, fan cover	5504-91130	1	
51	Spring, spiral	1861-75120	1						
52	Reel	1861-75130	1						
53	Ratchet	1861-75141	1						
54	Washer	1861-75150	1						
55	Screw	1179-75271	1						
56	Retainer	1861-75160	1						
57	Washer	1861-75170	1						
58	Rope	1861-75180	1						
59	Knob	1490-75180	1						
60	Screw	0263-90412	4						
61	Carburetor ass'y	5600-81000	1						
62	Screw	1752-81110	2						
63	Bracket	1891-81130	1						
64	Ring	1751-81130	1						
65	Swivel	1881-81140	1						
66	Valve	5600-81150	1						

Fig. 4 ENGINE GROUP CHT2300B

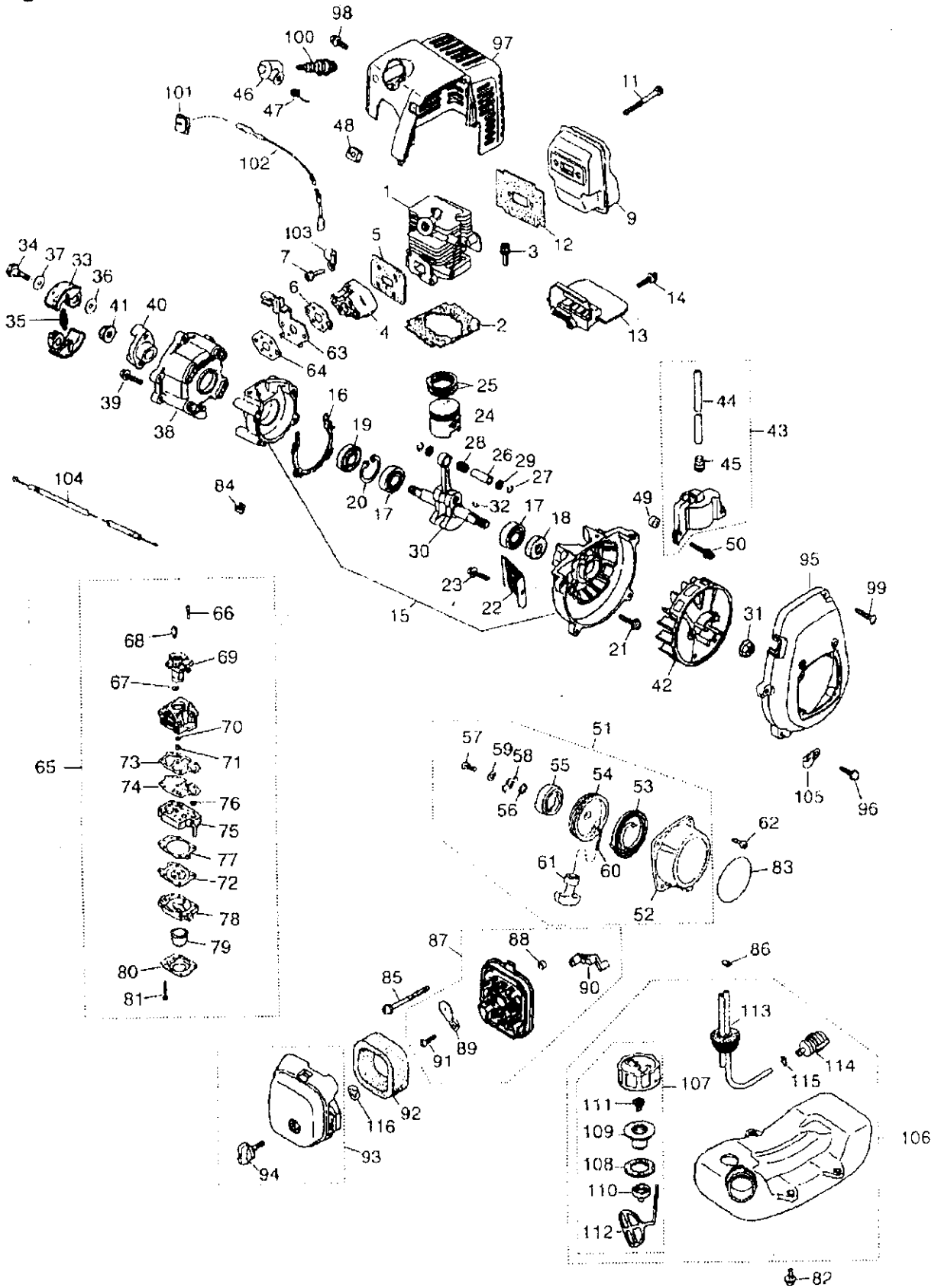


Fig. 4 ENGINE GROUP CHT2300B

Key#	DESCRIPTION	PART NUMBER	QTY /UNIT	NOTE	Key#	DESCRIPTION	PART NUMBER	QTY /UNIT
1	Cylinder	5600-12110	1		64	Gasket, carburetor	5500-13130	1
2	Gasket, base	5500-12211	1		65	Carburetor ass'y	5628-81000	1
3	Bolt, M5x22	1850-12130	2		66	Screw	5850-81110	2
4	Insulator	5500-13102	1		67	Ring	1751-81130	1
5	Gasket, insulator	5500-13120	1		68	Swivel	1881-81140	1
6	Gasket, carb	5500-13130	1		69	Valve ass'y	5628-81150	1
7	Screw, M5x20	0263-90520	2		70	O-ring	1751-81240	1
8					71	Jet	5628-81250	1
9	Muffler	5601-15110	1		72	Diaphragm	3310-81260	1
10					73	Gasket, pump	1065-81410	1
11	Bolt, M5x50	01252-30550	2		74	Diaphragm, pump	1065-81420	1
12	Gasket, muffler	5600-15210	1		75	Body, pump	1850-81450	1
13	Plate, muffler	5600-15220	1		76	Screen	3306-81380	1
14	Screw, M4x16	0263-90416	1		77	Gasket, diaphragm	1850-81470	1
15	Crankcase comp.	5600-21100	1		78	Body, purge	1850-81490	1
16	Gasket, case	5500-21140	1		79	Pump, priming	1751-81510	1
17	Bearing	06030-06001	2		80	Cover, pump	1850-81520	1
18	Oil seal	2169-21210	1		81	Screw	1850-81530	4
19	Oil seal	1850-21220	1		82	Screw	5500-85510	3
20	Snap ring	04065-02812	1		83	Label, recoil	5608-91120	1
21	Bolt, M5x30	01252-30530	4		84	Cap	1601-81810	1
22	Guard	5500-22110	1		85	Screw, M5x50	0263-90560	2
23	Screw, M5x14	0263-90514	1		86	Clip	1950-86120	1
24	Piston	5600-41111	1		87	Body ass'y	5500-82102	1
25	Ring, piston	1100-41210	2		88	Sleeve	1970-82190	2
26	Pin, piston	1101-41310	1		89	Plate, choke	5500-82131	1
27	Snap ring	1260-41320	2		90	Lever, choke	5500-82140	1
28	Bearing	1140-41330	1		91	Screw	2630-33610	1
29	Washer	1101-41340	2		92	Element	5500-82171	1
30	Crankshaft comp.	5600-42001	1		93	Cover ass'y	5600-82201	1
31	Nut	1650-43230	1		94	Knob	5500-82221	1
32	Key	1000-43240	1		95	Cover, fan	5600-31110	1
33	Shoe	1140-51111	2		96	Screw, M5x20	0263-90520	4
34	Screw	1140-51250	2		97	Cover, engine	5600-32100	1
35	Spring	1970-51221	1		98	Screw, M5x12	1850-32160	1
36	Washer	1140-51230	2		99	Screw	1900-31410	1
37	Washer	1970-51241	2		100	Spark plug	5933-73110	1
38	Case, clutch	5600-52110	1		101	Grommet	1852-72120	1
39	Screw, M5x16	0263-90516	4		102	Cord comp.	5601-73200	1
40	Plate, clutch	5600-52150	1		103	Clamp	1140-72231	1
41	Nut	1650-43230	1		104	Cable comp.	5601-83100	1
42	Rctor	5600-71110	1		105	Clamp	1140-72231	1
43	Coil ass'y	5501-71201	1		106	Tank ass'y	5606-85001	1
44	Cord	5500-71220	1		107	Cap ass'y	5606-85202	1
45	Cap	2616-71320	1		108	Packing	5500-85220	1
46	Cap, spark plug	1900-72111	1		109	Holder	5600-85231	1
47	Spring	1900-72120	1		110	Cap, holder	5600-85240	1
48	Grommet	5500-72130	1		111	Valve	5600-85250	1
49	Spacer	1260-71261	2		112	Stopper	3317-57242	1
50	Bolt, M4x25	3310-72150	2		113	Pipe comp.	5500-85300	1
51	Recoil ass'y	1861-75100	1		114	Filter ass'y	5500-85400	1
52	Case, recoil	1861-75110	1		115	Clip	1260-85460	1
53	Spring, Spiral	1861-75120	1		116	Ring	5500-82230	1
54	Reel	1861-75130	1					
55	Ratchet	1861-75141	1					
56	Washer	1861-75150	1					
57	Screw	1483-75270	1					
58	Retainer	1487-75160	1					
59	Washer	1487-75170	1					
60	Rope	1861-75180	1					
61	Knob	1490-75180	1					
62	Screw	0263-90412	4					
63	Bracket	5628-83221	1					