

HEDGE-TRIMMER

**HT2300A
CHT2300B**

PARTS LIST

EFFECTIVE MAR.1994

APPLIED TO SERIAL NUMBERS:

**HT2300A — 300101 and up
CHT2300B — 400101 and up**



CONTENTS:

Fig. 1 CUTTER GROUP — HT2300A	2
Fig. 2 ENGINE GROUP — HT2300A	4
Fig. 3 CUTTER GROUP — CHT2300B	6
Fig. 4 ENGINE GROUP — CHT2300B	8

Fig.1 CUTTER GROUP — HT2300A

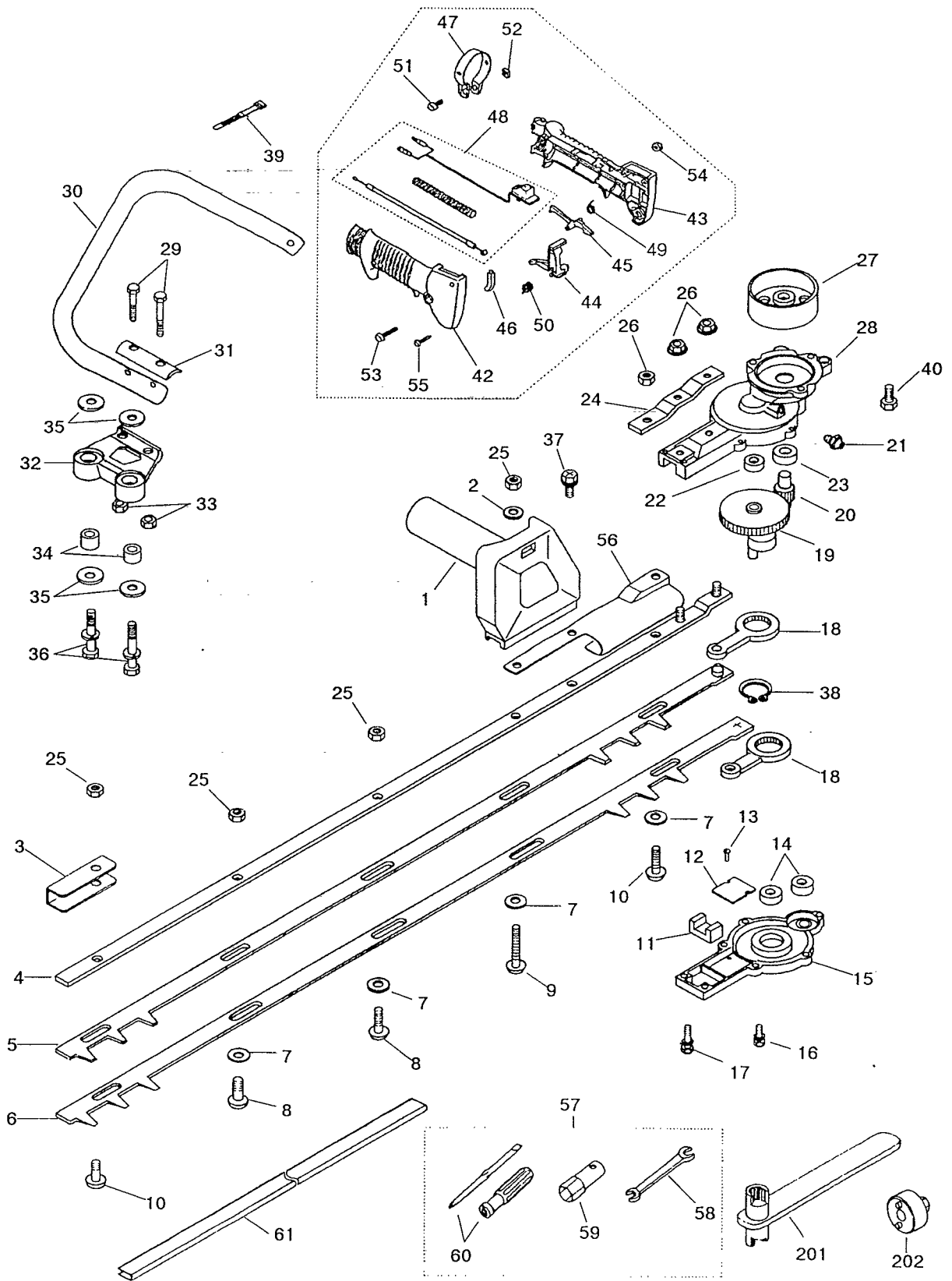


Fig. 1 CUTTER GROUP — HT2300A

Key No.	Description	Part Number	Q'ty	Note
1	Right handle comp.	3883-12101	1	
2	Washer	3883-12130	1	
3	Reinforce	3880-11750	1	
4	Guide plate	3883-11611	1	
5	Upper blade	3880-11720	1	
6	Lower blade	3880-11730	1	
7	Washer	3880-11780	4	
8	Screw, 19mm long	3884-11750	2	
9	Screw, 29mm long	6095-11810	1	
10	Screw, 22mm long	3884-11660	2	
11	Felt	3873-11320	1	
12	Plate	3880-11340	1	
13	Screw	0260-00305	2	
14	Bearing	06001-00608	2	
15	Lower case	3873-11210	1	
16	Bolt	0225-10516	5	
17	Bolt	0225-10520	2	
18	Rod	3873-11500	2	
19	Gear comp.	6830-11400	1	
20	Pinion	3884-11420	1	
21	Fitting	3199-13350	1	
22	Bearing	06001-00608	1	
23	Bearing	06004-06001	1	
24	Plate	3876-11670	1	
25	Nut	3880-11790	5	
26	Nut	3880-11140	2	
27	Clutch drum	3884-11410	1	
28	Upper case	3887-11111	1	
29	Bolt	0212-50530	2	
30	Left handle	6835-13110	1	
31	Plate	6095-13310	1	
32	Bracket	6095-13320	1	
33	Nut	3876-14470	2	
34	Collar	6095-13330	2	
35	Washer	6095-13360	4	
36	Bolt	0225-10625	2	
37	Bolt	3883-12140	1	
38	Snap ring	04064-02512	1	
39	Band	3880-13350	1	
40	Bolt	0225-10614	3	
41	Lever ass'y	6835-13200	1	
42	Grip, right	6835-13210	1	
43	Grip, left	6835-13220	1	
44	Lever, throttle	1638-81430	1	
45	Lever, safety	1638-84140	1	
46	Lock	1638-84150	1	
47	Band	1638-84160	1	
48	Cable comp.	6835-13300	1	
49	Spring	1638-84170	1	
50	Spring	1638-84180	1	
51	Screw	0263-60620	1	
52	Nut	1638-84190	1	
53	Screw	0260-60535	1	
54	Nut	1638-84210	1	
55	Screw	1638-84220	1	
56	Protector	3887-91170	1	
57	Tool set	1111-91003	1	
58	Spanner	3540-91120	1	
59	Socket	1110-91320	1	
60	Screwdriver	1030-91340	1	
61	Cover, blade	3880-91140	1	
201	Wrench	3880-95020	(1)	Optional part
202	Wrench	3880-95010	(1)	Optional part

Fig.2 ENGINE GROUP — HT2300A

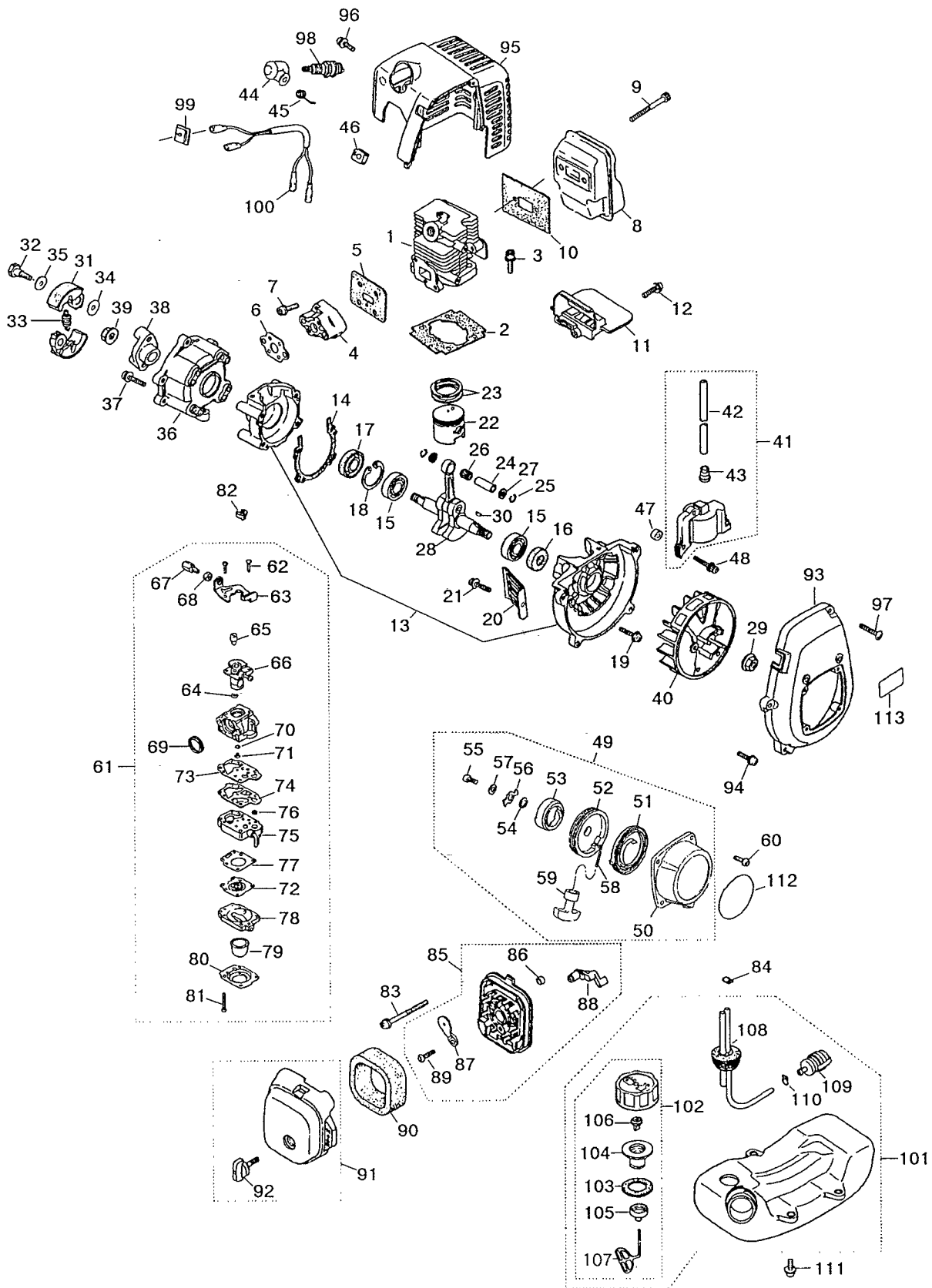


Fig.2 ENGINE GROUP — HT2300A

Key No.	Description	Part Number	Q'ty	Note	Key No.	Description	Part Number	Q'ty	Note
1	Cylinder	5600-12110	1		67	Screw	1918-81170	1	
2	Gasket, base	5500-12210	1		68	Nut	1751-81180	1	
3	Bolt, M5x22	1850-12130	2		69	Ring	1881-81130	1	
4	Insulator	5500-13160	1		70	O-ring	1751-81240	1	
5	Gasket, insulator	5500-13120	1		71	Jet	5600-81250	1	
6	Gasket, carb	5500-13130	1		72	Diaphragm	3310-81260	1	
7	Screw, M5x20	0263-90520	2		73	Gasket	1065-81410	1	
8	Muffler	5600-15110	1		74	Diaphragm	1065-81420	1	
9	Bolt, M5x50	01252-30550	2		75	Body ass'y	1794-81450	1	
10	Gasket, muffler	5600-15210	1		76	Screen	3306-81380	1	
11	Plate, muffler	5600-15220	1		77	Gasket	1850-81470	1	
12	Screw, M4x16	0263-90416	1		78	Body	1850-81490	1	
13	Crankcase comp.	5600-21100	1		79	Pump	1751-81510	1	
14	Gasket, case	5500-21140	1		80	Cover	1850-81520	1	
15	Bearig	06030-06001	2		81	Screw	1850-81530	4	
16	Oil seal	2169-21210	1		82	Cap	1601-81810	1	
17	Oil seal	1850-21220	1		83	Screw, M5x55	0263-30555	2	
18	Snap ring	04065-02812	1		84	Clip	1950-86120	1	
19	Bolt, M5x30	01252-30530	4		85	Body ass'y	5500-82100	1	
20	Guard	5500-22110	1		86	Sleeve	1970-82190	2	
21	Screw, M5x12	0263-90512	1		87	Plate, choke	5500-82130	1	
22	Piston	5600-41110	1		88	Lever, choke	5500-82140	1	
23	Ring, piston	1850-41210	2		89	Screw	2630-33610	1	
24	Pin, piston	1101-41310	1		90	Element	5500-82171	1	
25	Snap ring	1260-41320	2		91	Cover ass'y	5600-82200	1	
26	Bearing	1140-41330	1		92	knob	5500-82220	1	
27	Washer	1101-41340	2		93	Cover, fan	5600-31110	1	
28	Crankshaft comp.	5600-42000	1		94	screw, M5x20	0263-90520	4	
29	Nut	1650-43230	1		95	Cover, engine	5600-32100	1	
30	Key	1000-43240	1		96	Screw, M5x12	1850-32160	1	
31	Shoe	1140-51110	2		97	Screw	1900-31410	1	
32	Screw	1140-51250	2		98	Spark plug	5602-73110	1	RCJ6Y
33	Spring	1970-51220	1		99	Grommet	1852-72120	1	
34	Washer	1140-51230	2		100	Cord comp.	5500-73201	1	
35	Washer	1970-51241	2		101	Tank ass'y	5606-85000	1	
36	Case, clutch	5600-52110	1		102	Cap sss'y	5606-85200	1	
37	Screw, M5x16	0263-90516	4		103	Packing	5500-85220	1	
38	Plate, Clutch	5600-52150	1		104	Holder	5600-85230	1	
39	Nut	1650-43230	1		105	Cap, holder	5600-85240	1	
40	Rotor	5600-71110	1		106	Valve	5600-85250	1	
41	Coil ass'y	5501-71200	1		107	Stopper	3317-57242	1	
42	Cord	5500-71220	1		108	Pipe comp.	5500-85300	1	
43	Cap	2616-71320	1		109	Filter ass'y	3302-85400	1	
44	Cap, spark plug	1900-72111	1		110	Clip	1260-85460	1	
45	Spring	1900-72120	1		111	Screw	5500-85510	3	
46	Grommet	5500-72130	1		112	Label, recoil	5606-91120	1	
47	Spacer	5500-72150	2		113	Label, fan cover	5504-91130	1	
48	Bolt, M4x25	3310-72150	2						
49	Recoil ass'y	1861-75100	1						
50	Case, recoil	1861-75110	1						
51	Spring, spiral	1861-75120	1						
52	Reel	1861-75130	1						
53	Ratchet	1861-75141	1						
54	Washer	1861-75150	1						
55	Screw	1179-75271	1						
56	Retainer	1861-75160	1						
57	Washer	1861-75170	1						
58	Rope	1861-75180	1						
59	Knob	1490-75180	1						
60	Screw	0263-90412	4						
61	Carburetor ass'y	5600-81000	1						
62	Screw	1752-81110	2						
63	Bracket	1891-81130	1						
64	Ring	1751-81130	1						
65	Swivel	1881-81140	1						
66	Valve	5600-81150	1						

Fig.3 CUTTER GROUP — CHT2300B

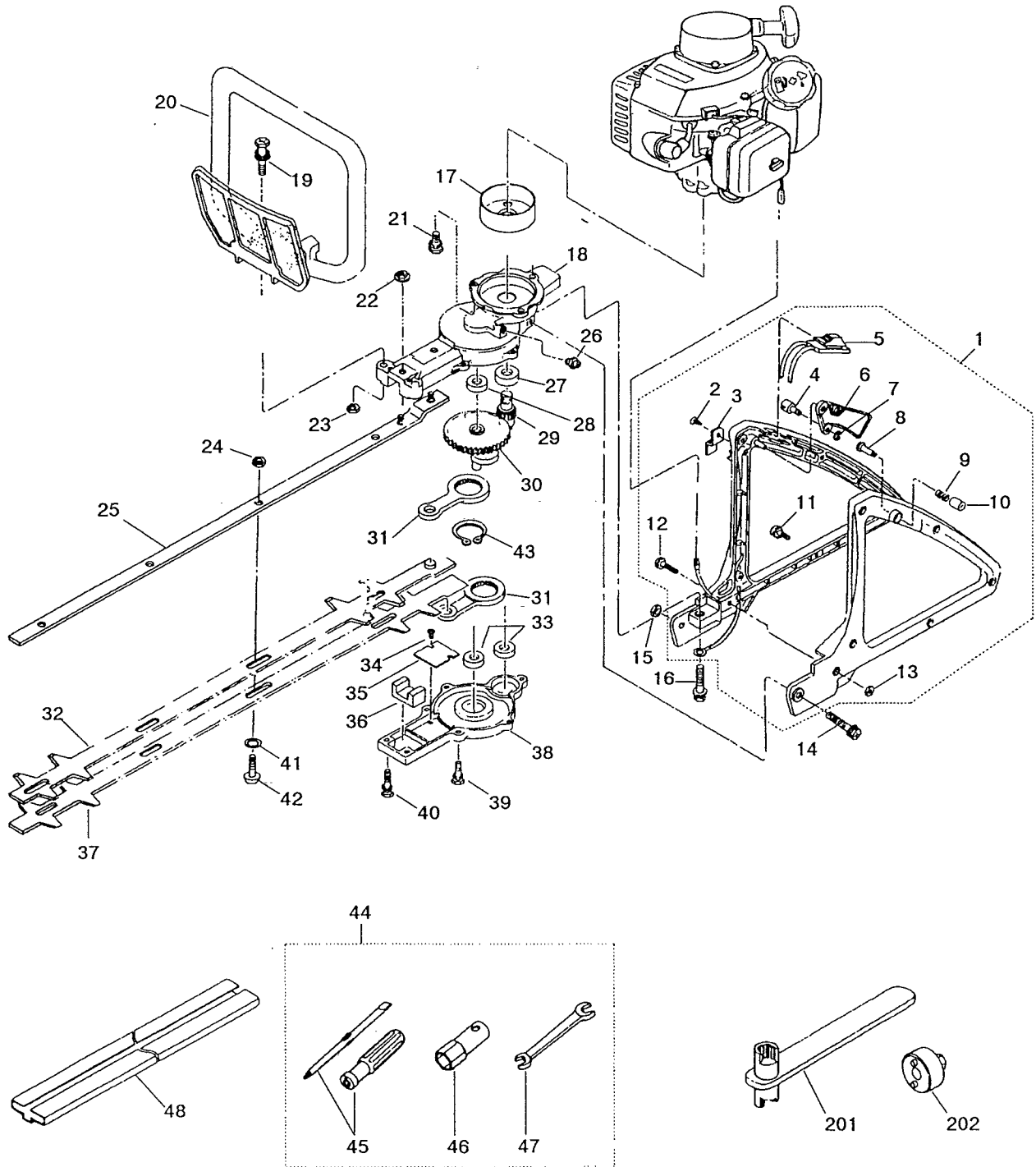


Fig.3 CUTTER GROUP — CHT2300B

Key No.	Description	Part Number	Q'ty	Note
1	Rear handle ass'y	3873-13100	1	
2	Screw, M4x10	3873-13180	1	
3	Plate	3873-13170	1	
4	Cable end	3873-13210	1	
5	Switch ass'y	3873-13130	1	
6	Throttle lever	3873-13220	1	
7	Snap ring	3873-13230	1	
8	Pin	3873-13140	1	
9	Spring	3873-13150	1	
10	Cap	3873-13160	1	
11	Screw, M4x16	3873-13240	5	0260 30 416
12	Screw, M4x30	3873-13250	1	
13	Nut, M6	0280-10403	6	9010 0661
14	Bolt, M6x50	0225-50650	1	
15	Nut, M6	0280-10605	1	
16	Bolt, M6x40	0225-50640	1	
17	Clutch drum	3884-11410	1	
18	Middle case	3873-11111	1	
19	Bolt, M6x35	0225-30635	2	
20	Front handle	3873-12102	1	
21	Bolt, M6x14	0225-10614	2	
22	Nut, M5	3880-11140	2	
23	Nut, M6	0280-10605	2	
24	Nut, M6U	3880-11790	4	
25	Guide plate	3873-11611	1	
26	Grease fitting	3199-13350	1	
27	Bearing, 6001 2RS	06004-06001	1	
28	Bearing, 608Z	06001-00608	1	
29	Pinion	3884-11420	1	
30	Gear comp.	6830-11400	1	
31	Rod	3873-11500	2	
32	Upper blade	3873-11720	1	
33	Bearing, 608Z	06001-00608	2	
34	Screw, M3x5	0260-00305	2	
35	Plate	3880-11340	1	
36	Felt	3873-11320	1	
37	Lower blade	3873-11730	1	
38	lower case	3873-11210	1	
39	Bolt, M5x16	0225-10516	5	
40	Bolt, M5x20	0225-10520	2	
41	Washer	3873-11760	4	
42	Screw, M6x19	3873-11750	4	
43	Snap ring	04064-02512	1	
44	Tool set	1111-91003	1	
45	Screwdriver	1030-91340	1	
46	Socket, Hex3/4"	1110-91320	1	
47	Spanner, 8x10	3540-91120	1	
48	Cover, blade	6836-91140	1	
201	Wrench	3880-95020	(1)	Optional part
202	Wrench	3880-95010	(1)	Optional part

Fig.4 ENGINE GROUP — CHT2300B

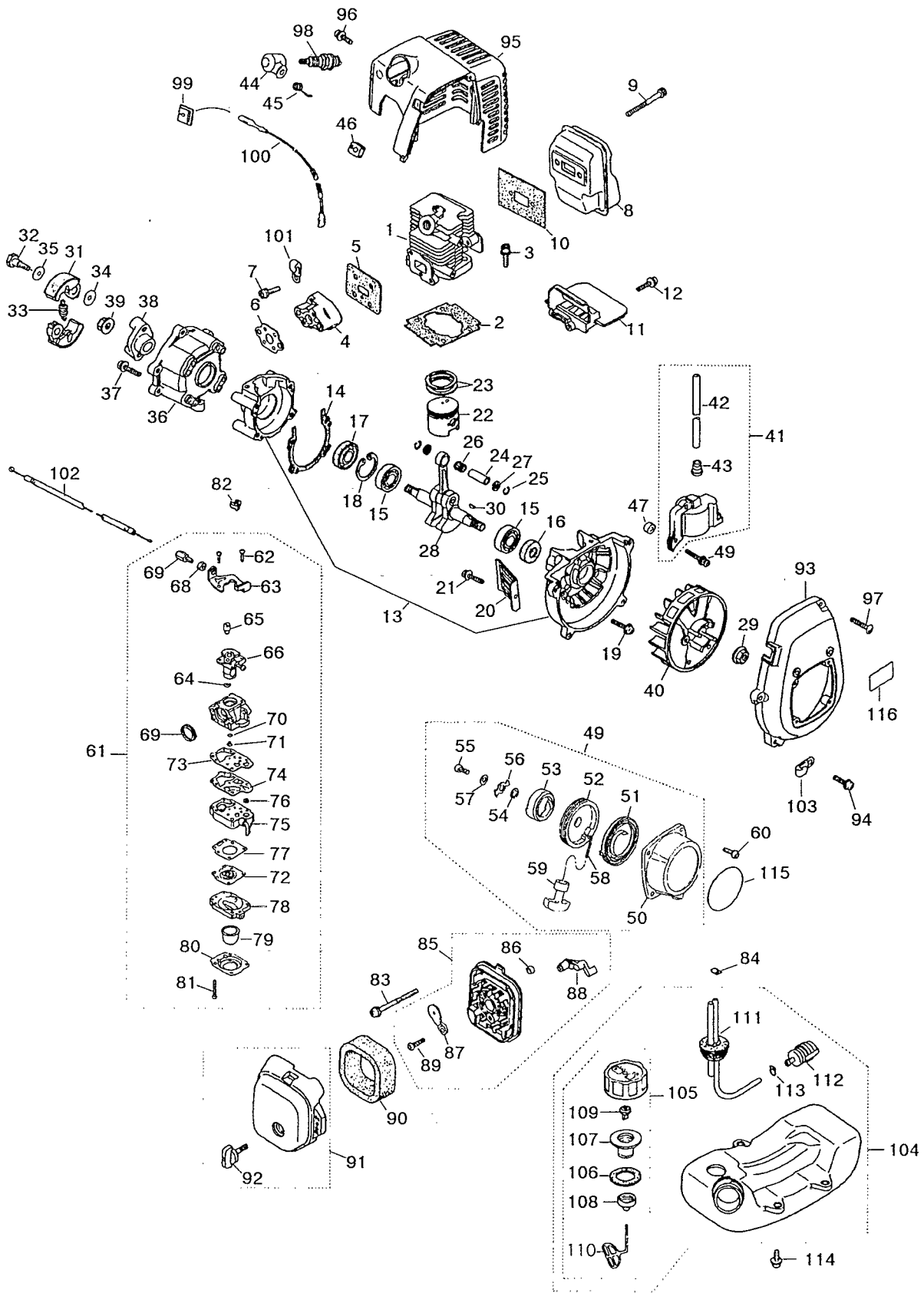


Fig.4 ENGINE GROUP — CHT2300B

Key No.	Description	Part Number	Q'ty	Note	Key No.	Description	Part Number	Q'ty	Note
1	Cylinder	5600-12110	1		67	Screw	1918-81170	1	
2	Gasket, base	5500-12210	1		68	Nut	1751-81180	1	
3	Bolt, M5x22	1850-12130	2		69	Ring	1881-81130	1	
4	Insulator	5500-13160	1		70	O-ring	1751-81240	1	
5	Gasket, insulator	5500-13120	1		71	Jet	5600-81250	1	
6	Gasket, carb	5500-13130	1		72	Diaphragm	3310-81260	1	
7	Screw, M5x20	0263-90520	2		73	Gasket	1065-81410	1	
8	Muffler	5600-15110	1		74	Diaphragm	1065-81420	1	
9	Bolt, M5x50	01252-30550	2		75	Body ass'y	1794-81450	1	
10	Gasket, muffler	5600-15210	1		76	Screen	3306-81380	1	
11	Plate, muffler	5600-15220	1		77	Gasket	1850-81470	1	
12	Screw, M4x16	0263-90416	1		78	Body	1850-81490	1	
13	Crankcase comp.	5600-21100	1		79	Pump	1751-81510	1	
14	Gasket, case	5500-21140	1		80	Cover	1850-81520	1	
15	Bearing	06030-06001	2		81	Screw	1850-81530	4	
16	Oil seal	2169-21210	1		82	Cap	1601-81810	1	
17	Oil seal	1850-21220	1		83	Screw, M5x55	0263-30555	2	
18	Snap ring	04065-02812	1		84	Clip	1950-86120	1	
19	Bolt, M5x30	01252-30530	4		85	Body ass'y	5500-82100	1	
20	Guard	5500-22110	1		86	Sleeve	1970-82190	1	
21	Screw, M5x12	0263-90512	1		87	Plate, choke	5500-82130	1	
22	Piston	5600-41110	1		88	Lever, choke	5500-82140	1	
23	Ring, piston	1850-41210	2		89	Screw	2630-33610	1	
24	Pin, piston	1101-41310	1		90	Element	5500-82171	1	
25	Snap ring	1260-41320	2		91	Cover ass'y	5600-82200	1	
26	Bearing	1140-41330	1		92	Knob	5500-82220	1	
27	Washer	1101-41340	2		93	Cover, fan	5600-31110	1	
28	Crankshaft comp.	5600-42000	1		94	Screw, M5x20	0263-90520	4	
29	Nut	1650-43230	1		95	Cover, engine	5600-32100	1	
30	Key	1000-43240	1		96	Screw, M5x12	1850-32160	1	
31	Shoe	1140-51110	2		97	Screw	1900-31410	1	
32	Screw	1140-51250	2		98	Spark plug	5602-73110	1	RCJ6Y
33	Spring	1970-51220	1		99	Grommet	1852-72120	1	
34	Washer	1140-51230	2		100	Cord comp.	5601-73200	1	
35	Washer	1970-51241	2		101	Clamp	1140-72231	1	
36	Case, clutch	5600-52110	1		102	Cable comp.	5601-83100	1	
37	Screw, M5x16	0263-90516	4		103	Clamp	1140-72231	1	
38	Plate, clutch	5600-52150	1		104	Tank ass'y	5606-85000	1	
39	Nut	1650-43230	1		105	Cap ass'y	5606-85200	1	
40	Rotor	5600-71110	1		106	Packing	5500-85220	1	
41	Coil ass'y	5501-71200	1		107	Holder	5600-85230	1	
42	Cord	5500-71220	1		108	Cap, holder	5600-85240	1	
43	Cap	2616-71320	1		109	Valve	5600-85250	1	
44	Cap, spark plug	1900-72111	1		110	Stopper	3317-57242	1	
45	Spring	1900-72120	1		111	Pioe comp.	5500-85300	1	
46	Grommet	5500-72130	1		112	Filter ass'y	3302-85400	1	
47	Spacer	5500-72150	2		113	Clip	1260-85460	1	
48	Bolt, M4x25	3310-72150	2		114	Screw	5500-85510	3	
49	Recoil ass'y	1861-75100	1		115	Label, recoil	5608-91120	1	
50	Case, recoil	1861-75110	1		116	Label, fan cover	5504-91130	1	
51	Spring, spiral	1861-75120	1						
52	Reel	1861-75130	1						
53	Ratchet	1861-75141	1						
54	Washer	1861-75150	1						
55	Screw	1179-75271	1						
56	Retainer	1861-75160	1						
57	Washer	1861-75170	1						
58	Rope	1861-75180	1						
59	Knob	1490-75180	1						
60	Screw	0263-90412	4						
61	Carburetor ass'y	5600-81000	1						
62	Screw	1752-81110	2						
63	Bracket	1891-81130	1						
64	Ring	1751-81130	1						
65	Swivel	1881-81140	1						
66	Valve	5600-81150	1						

DIFFERENCE BETWEEN HT230A AND HT231A

1. ENGINE GROUP

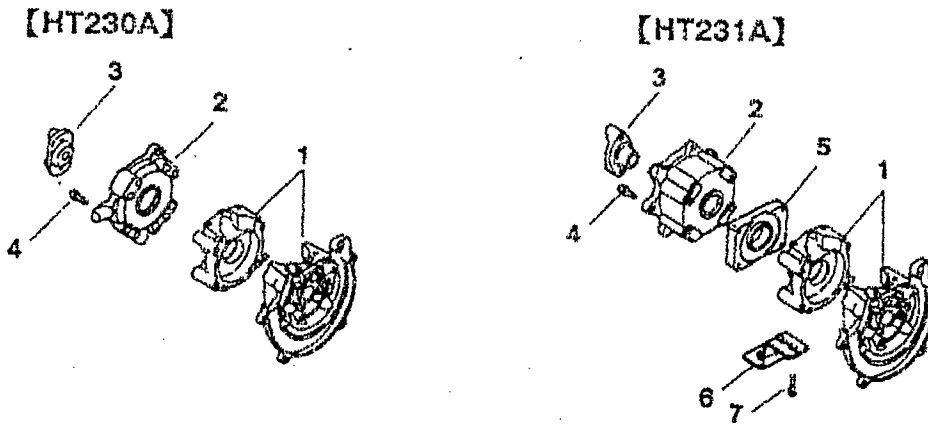


Fig No.	Part Name	HT230A		HT231A	
		Part Number	Q'ty	Part Number	Q'ty
1	CRANKCASE COMP.	1150-21100	1	1772-21101	1
2	CLUTCH CASE	1753-21161	1	1779-21160	1
3	CLUTCH PLATE	1140-55310	1	1772-55310	1
4	SCREW	0260-30516	4	0260-30525	1
5	PLATE	—	-	1772-56111	1
6	BRACKET, fuel tank	—	-	1772-86223	1
7	SCREW	—	-	0260-30512	1

2. LEFT HANDLE GROUP

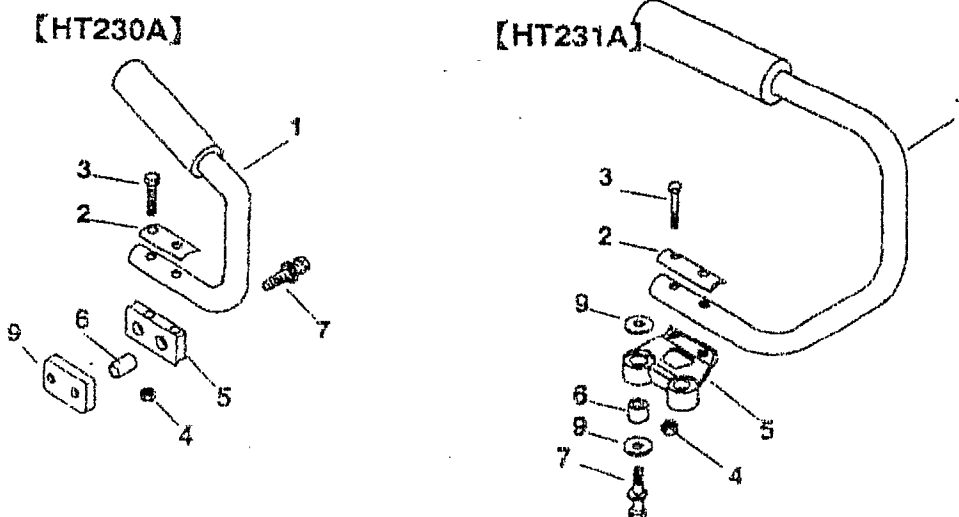


Fig No.	Part Name	HT230A		HT231A	
		Part Number	Q'ty	Part Number	Q'ty
1	HANDLE(w/o grip)	3880-13110	1	3887-13110	1
2	PLATE	3880-13310	1	6095-13310	1
3	BOLT	0212-20545	2	0212-50350	2
4	NUT	3880-13370	2	3876-14470	2
5	BRACKET	3880-13321	1	6095-13320	1
6	COLLAR	3880-13340	2	6095-13330	2
7	BOLT	0225-30635	2	0225-10625	2
8	ABSORBER	3880-13330	1	—	-
9	WASHER	—	-	6095-13360	4

3. GEARCASE GROUP

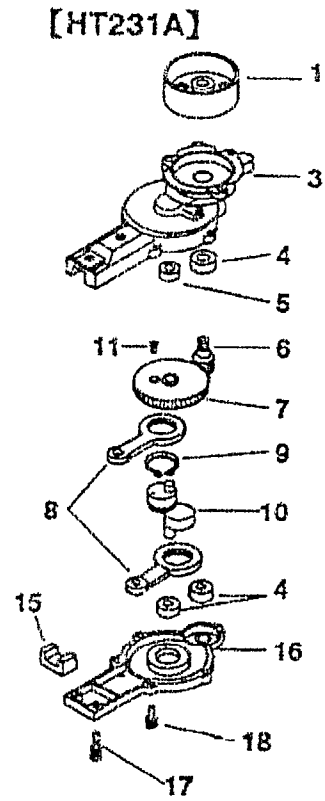
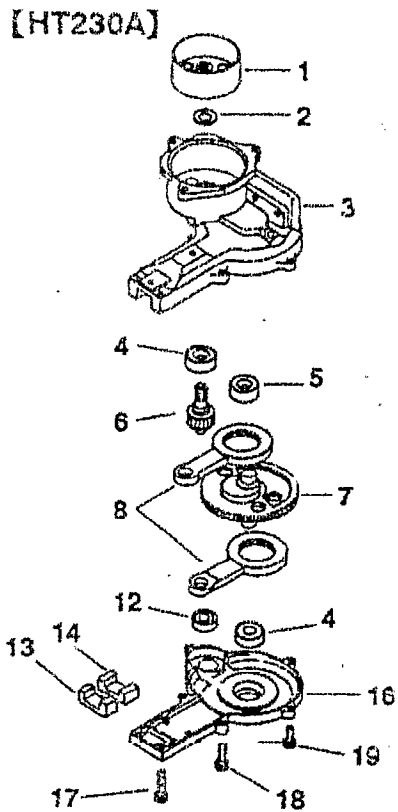


Fig No.	Part Name	HT230A		HT231A	
		Part Number	Q'ty	Part Number	Q'ty
1	DRUM, clutch	3880-11410	1	3884-11410	1
2	COLLAR	3880-11430	1	---	-
3	CASE, middle	3880-11110	1	3887-11110	1
4	BEARING	06002-06000	2	06004-06001	1
5	BEARING	06004-06000	1	06001-00608	3
6	PINION	3880-11420	1	3884-11420	1
7	GEAR	3880-11440	1	3884-11440	1
8	ROD	3880-11500	2	3873-11500	2
9	SNAP RING	---	-	04064-02512	1
10	CRANKSHAFT	---	-	3885-11450	1
11	SCREW	---	-	3873-11460	1
12	BEARING	06002-00608	1	---	-
13	FELT(A)	3880-11320	1	---	-
14	FELT(B)	3880-11330	1	---	-
15	FELT	---	-	3873-11320	1
16	CASE, lower	3880-11210	1	3873-11210	1
17	DOLT	01252-30522	2	0225-10520	2
18	BOLT	01252-30518	2	0225-10516	5
19	BOLT	01252-30516	3	---	-