

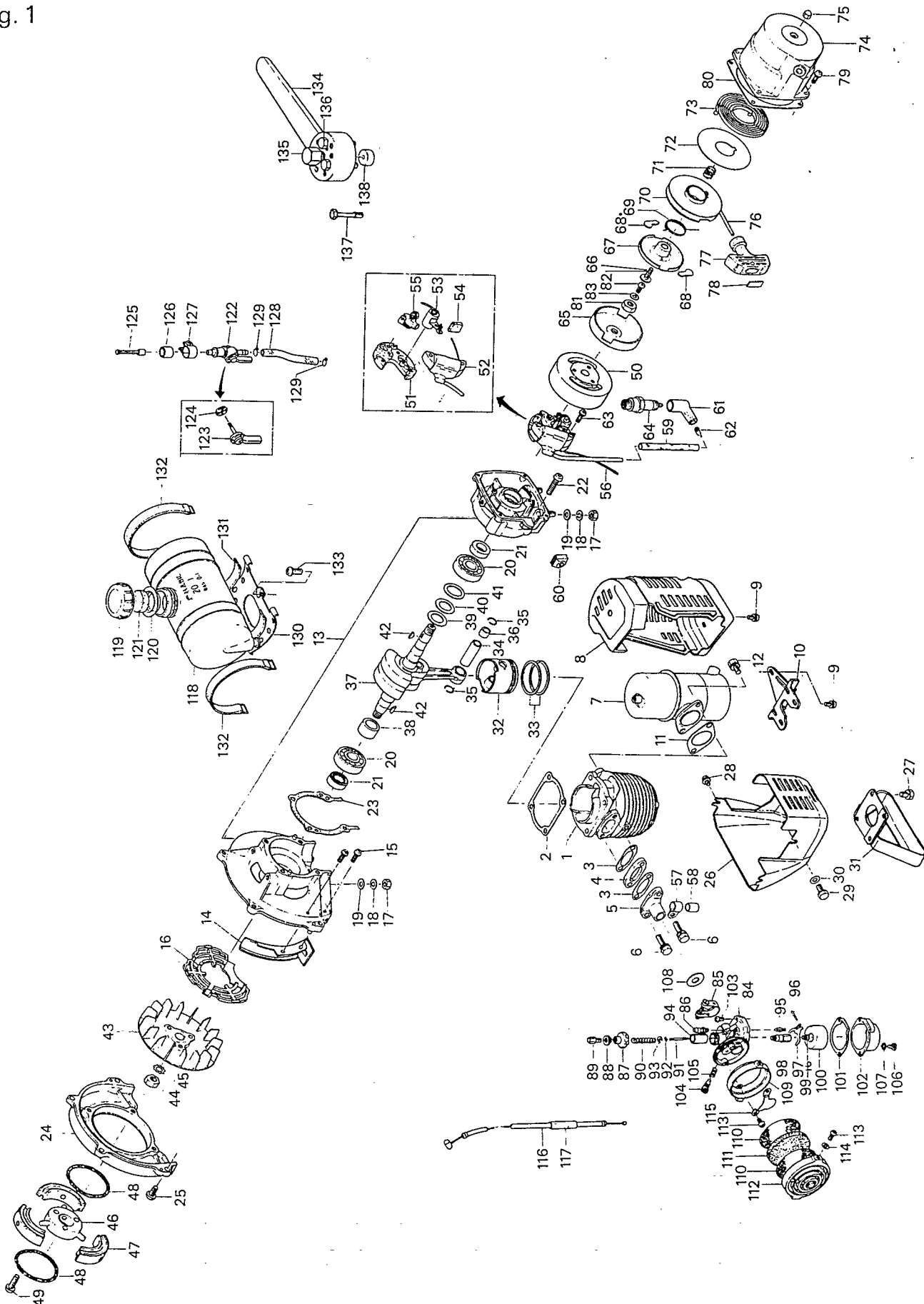
# PARTS LIST FOR ZENOAH BRUSH CUTTER

MODEL : FBC33-1

MODEL : FBC33AV-1

DATE : APR. 1 . 1981

Fig. 1



# CYLINDER GROUP

Fig. & Index No.	Part No.	Part Name	Q' ty	Serial No.	Remarks
I- 1	1520-12111	CYLINDER	1		
- 2	1521-13020	GASKET	1		
- 3	1520-13030	GASKET	2		
- 4	1520-13060	INSULATOR	1		
- 5	1520-13070	PIPE, inlet	1		
- 6	0224-50625	BOLT	2		
- 7	1527-17110	MUFFLER	1		
- 8	1527-17210	COVER, muffler	1		
- 9	0260-30512	SCREW	3		
-10	1529-17220	STAY	1		
-11	1700-13050	GASKET	1		
-12	0225-10612	BOLT	2		

# CRANK CASE GROUP

I-13	1527-27100	CRANKCASE COMP	1		
-14	1527-27190	GUIDE, fan	1		
-15	0260-30410	SCREW	2		
-16	1527-27180	SCREEN	1		
-17	0280-10605	NUT	4		
-18	0290-20615	WASHER	4		
-19	01641-20608	WASHER	4		
-20	06000-06203	BEARING	2		
-21	1520-21220	SEAL	2		
-22	0260-00630	SCREW	4		
-23	1527-21170	GASKET	1		

# COVER GROUP

I-24	1520-31110	COVER, fan	1		
-25	0260-00614	SCREW	4		
-26	1517-37311	COVER, cylinder	1 or 1		Zenoah Scarlet Mustard Yellow
	1517-37321	COVER, . cylinder			
-27	0224-10616	BOLT	4		
-28	1075-32110	SCREW	2		
-29	0224-10612	BOLT	1		
-30	01642-20608	WASHER	1		
-31	1527-37310	STAND	1		

# PISTON AND CRANKSHAFT GROUP

Fig. & Index No.	Part No.	Part Name	Q'ty	Serial No.	Remarks
I-32	1520-41110	PISTON	1		
-33	1520-41210	RING, piston	2		
-34	1510-41310	PIN, piston	1		
-35	1520-41320	RING	2		
-36	1540-41330	BEARING	1		
-37	1521-42002	CRANKSHAFT COMP	1		
-38	1521-42240	COLLAR	1		
-39	1527-42410	SHIM	1		
-40	1510-43310	SHIM	0 ~ 2		t 0.2
-41	1510-43320	SHIM	0 ~ 2		t 0.3
-42	1000-43240	KEY	2		
-43	1520-43111	FAN, cooling	1		
-44	1300-43230	NUT	1		
-45	1000-43220	WASHER	1		

## CLUTCH GROUP

	1520-51002	CLUTCH ASSY	1		
I-46	1520-51102	• HUB COMP	1		
-47	1520-51200	• SHOE COMP	3		
-48	1500-51311	• SPRING, clutch	2		
-49	0260-10625	SCREW	3		

## MAGNETO GROUP

	1520-71001	MAGNETO ASSY	1		
I-50	1030-71001-10	• FLYWHEEL	1		
	1520-71000-20	• STATOR ASSY	1		
-51	1030-71000-21	•• PLATE, stator	1		☆1520-71000-20
-52	1520-71000-22	•• COIL, ignition	1		
-53	1000-71000-25	•• CONDENSER	1		
-54	1000-71000-28	•• FELT, oil	1		
-55	1000-71000-30	•• BREAKER COMP	1		
-56	1030-71000-47	•• CORD	1		
-57	1520-71120	CLAMP, hightension cord	1		
-58	1000-71130	TUBE, hightension cord	1		
-59	1527-71450	PIPE	1		
-60	1500-71210	GROMMET	1		

## MAGNETO GROUP

Fig. & Index No.	Part No.	Part Name	Q' ty	Serial No.	Remarks
I-61	1100-72212	CAP, plug	1		
-62	1500-71420	SPRING, plug cap	1		
-63	0260-30414	SCREW	2		
-64	1517-73110	SPARK PLUG <b>86HS</b>	1		Champion RJ-6

## RECOIL STARTER GROUP

	1521-72104	STARTER ASSY	1		
I-65	1521-72102-01	• PULLEY, starter	1		
-66	1521-72102-02	• SCREW, set	1		
-67	1521-72102-03	• PLATE, friction	1		
-68	1521-72102-04	• RATCHET	2		
-69	1521-72102-05	• SPRING, return	1		
-70	1521-72102-06	• REEL	1		
-71	1521-72102-07	• SPRING, friction	1		
-72	1521-72102-08	• PLATE, slide	1		
-73	1521-72102-09	• SPRING, spiral	1		
-74	1521-72110	• CASE	1		
-75	1521-72102-11	• NUT	1		
-76	1521-72102-12	• ROPE	1		
-77	1521-72102-13	• KNOB	1		
-78	1521-72320	• TAPE	1		
-79	0260-30416	SCREW	4		
-80	1010-22132	GASKET	1		
-81	1521-43201	NUT	1		
-82	1040-45151	SCREW	1		
-83	1040-24330	SPACER	1		

## CARBURETOR GROUP

	103881002	CARBURETOR ASSY	1		
I-84	1038-81001-02	• BODY, carburetor	1		☆1527-81000
-85	1038-81000-08	• BAND ASSY	1		
-86	10388100210	• SEAT, needle	1		
-87	1030-81000-11	• CAP, body	1		
-88	1030-81000-12	• NUT, cable adjuster	1		
-89	1101-81170	• ADJUSTER, cable	1		
-90	1030-81000-14	• SPRING, throttle	1		

# CARBURETOR GROUP

Fig. & Index No.	Part No.	Part Name	Q' ty	Serial No.	Remarks
1- 91	1030-81000-15	• NEEDLE, jet	1		
- 92	1030-81000-16	• CLIP, jet needle	1		
- 93	1030-81000-17	• RECEIVE, throttle spring	1		
- 94	1030-81001-18	• VALVE, throttle	1		
- 95	1334-81230	• VALVE, needle	1		
- 96	1030-81000-20	• PIN, float hinge	1		
- 97	1030-81000-21	• HINGE, float	1		
- 98	1038-81000-22	• JET, needle	1		
- 99	1389-81000-23	• JET, main	1		
- 100	1030-81000-24	• FLOAT	1		
- 101	1030-81000-25	• PACKING, float chamber	1		
- 102	1038-81000-26	• CHAMBER, float	1		
- 103	0260-10410	• SCREW	2		
- 104	1038-81001-29	• SCREW, adjust	1		
- 105	1030-81001-31	• SPRING, adjust screw	1		
- 106	1038-81000-32	• SCREW, drain	1		
- 107	1030-81000-33	• GASKET	1		
- 108	1038-81002-34	• PACKING, flange	1		
	1038-82001	CLEANER ASS Y	1		
- 109	1038-82012	• BODY, cleaner	1		
- 110	1030-82020	• SCREEN	2		
- 111	1030-82030	• ELEMENT	1		
- 112	1038-82042	• COVER	1		
- 113	0260-10408	• SCREW	4		
- 114	1030-82081	• WASHER	2		
- 115	1520-82510	PLATE, shut	1		
- 116	1527-82100	CABLE COMP	1		
- 117	07270-00604	TUBE	1		

# FUEL TANK GROUP

	1520-85002	TANK ASSY	1		
1- 118	1520-85113	TANK	1		☆ 1520-85002
	1076-85300	• CAP ASSY	1		
- 119	1076-85310	•• CAP, fuel tank	1		☆ 1076-85300
- 120	1076-85320	•• CAP, inner	1		☆ 1076-85300
- 121	1076-85330	•• ELEMENT	1		☆ 1076-85300

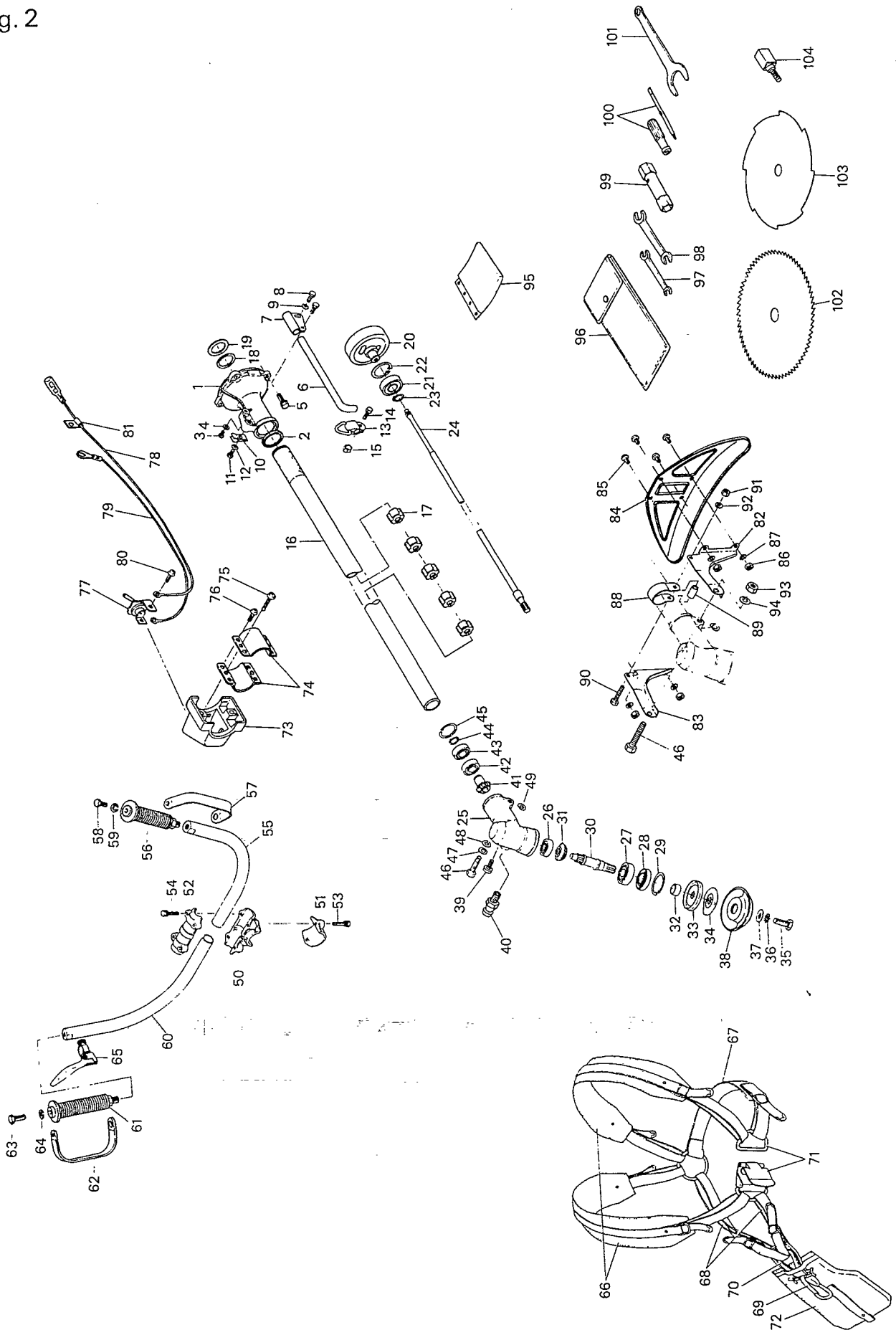
# FUEL TANK GROUP

Fig. & Index No.	Part No.	Part Name	Q'ty	Serial No.	Remarks
	1087-85400	• COCK ASSY	1		
1-122	1087-85410	•• BODY, cock	1		☆1087-85400
-123	1087-85450	••• LEVER, cock	1		
-124	1087-85460	••• PACKING, cock	1		
-125	1087-85420	•• STRAINER	1		☆1087-85400
-126	1087-85430	•• PIPE	1		☆1087-85400
-127	1087-85440	•• BAND ASSY	1		☆1087-85400
-128	1527-86110	PIPE, fuel	1		
-129	1030-86130	CLIP	2		
	1520-85500	BRACKET COMP	1		
-130	1520-85510	• BRACKET	1		☆1520-85500
-131	1520-85530	• CUSHION	2		
-132	1030-85520	BAND, fuel tank	2		
-133	0260-10612	SCREW	3		

# SPECIAL TOOLS GROUP

	1030-96101	PULLER ASSY	1		OP
1-134	1030-96111	• PULLER	1		OP ☆1030-96101
-135	1030-96120	• BOLT	1		OP
-136	1030-96130	• SCREW	3		OP
-137	1030-96141	• SCREW	2		OP
-138	1030-96150	• CAP	1		OP

Fig. 2





# HOUSING GROUP

Fig. & Index No.	Part No.	Part Name	Q' ty	Serial No.	Remarks
	3297-11100	HOUSING COMP	} or 1		Zenoah Scarlet
	3297-11103	HOUSING COMP			Mustard Yellow
2- 1	3297-11110	· HOUSING	} or 1		☆3297-11100 Zenoah Scarlet
- 1	3297-11113	· HOUSING			☆3297-11103 Mustard Yellow
- 2	3120-11120	· SEAL	1		
- 3	0260-00610	· SCREW	1		
- 4	3146-11140	· GASKET	1		
- 5	0225-50620	BOLT	4		
- 6	3144-11211	HANGER	1		
- 7	3144-11231	CLAMP	1		
- 8	0224-10616	BOLT	2		
- 9	01642-20608	WASHER	1		
- 10	3120-11230	CLAMP	1		
- 11	0224-00610	BOLT	1		
- 12	0290-20615	WASHER	1		
- 13	3144-11240	CLAMP	1		
- 14	0224-10620	BOLT	1		
- 15	0280-10605	NUT	1		
	3128-11303	PIPE COMP	1		
- 16	3128-11313	· PIPE	1		☆3128-11303
- 17	3120-11323	· BUSHING	5		
- 18	3120-11420	RING	1		
- 19	3120-11430	PLATE	1		
- 20	3120-12110	DRUM	1		
- 21	06004-06203	BEARING	1		
- 22	04065-04018	RING	1		
- 23	04064-01710	RING	1		
- 24	3128-12210	SHAFT	1		

# GEARCASE GROUP

Fig. & Index No.	Part No.	Part Name	Q' ty	Serial No.	Remarks
	3297-13000	GEARCASE ASSY	} or 1		Zenoah Scarlet
	3297-13003	GEARCASE ASSY			
2-25	3297-13110	• GEARCASE	} or 1		Mustard Yellow
-25	3297-13113	• GEARCASE			
-26	06000-06200	• BEARING			☆3297-13000 Zenoah Scarlet
-27	06000-06203	• BEARING			☆3297-13003 Mustard Yellow
-28	3100-13150	• SEAL			
-29	04065-04018	• RING			
-30	3120-13210	• SHAFT			
-31	3120-13220	• GEAR			
-32	3120-13233	• COLLAR			
-33	3127-13240	• HOLDER (A)			
-34	3120-13250	• HOLDER (B)			
-35	3130-13260	• BOLT			
-36	1000-43130	• WASHER			
-37	3100-16130	• WASHER			
-38	3144-13291	• COVER			
-39	0260-00510	• SCREW			
-40	07020-00000	• FITTING			
-41	3120-13311	• PINION			
-42	06000-06002	• BEARING			
-43	06001-06002	• BEARING			
-44	04064-01510	• RING			
-45	04065-03212	• RING			
-46	01016-50845	• BOLT			
-47	0290-20820	• WASHER			
-48	01641-20812	• WASHER			
-49	3130-13620	• SHIM			

## BRACKET GROUP

	3120-14102	• BRACKET ASSY	}	or 1	Zenoah Scarlet
	3297-14100	• BRACKET ASSY			Mustard Yellow
2-50	3120-14112	• BRACKET	}	or 1	Zenoah Scarlet
-50	3297-14110	• BRACKET			Mustard Yellow
-51	3120-14122	• CAP, lower	}	or 1	Zenoah Scarlet
-51	3297-14120	• CAP, lower			Mustard Yellow
-52	3120-14132	• CAP, upper	}	or 1	Zenoah Scarflow
-52	3297-14130	• CAP, upper			Mustard Yellow
-53	0224-50635	• BOLT			
-54	0224-50630	• BOLT			

## HANDLE GROUP

	3128-14200	HANDLE, left ASSY			
2-55	3128-14211	• HANDLE, left			
-56	3145-14330	• GRIP			
-57	3128-14240	• STAY			
-58	3145-14350	• BOLT			
-59	0290-20820	• WASHER			
	3128-14300	HADLE, right ASSY			
-60	3128-14211	• HANDLE, right			
-61	3145-14330	• GRIP			
-62	3128-14240	• STAY			
-63	3145-14350	• BOLT			
-64	0290-20820	• WASHER			
-65	3146-14410	• LEVER			

## HANGER GROUP

Fig. & Index No.	Part No.	Part Name	Q'ty	Serial No.	Remarks
	3146-17203	HARNES ASSY	1		
2-66	3146-17210	• PROTECTOR	2		
-67	3146-17220	• BELT	1		
-68	3146-17230	• BELT	2		
-69	3144-17240	• HOOK	1		
-70	3146-17251	• CUSHION	1		
-71	3146-17260	• BUCKLE	1		
-72	3146-17271	• PROTECTOR	1		

## SWITCH GROUP

	3297-18000	SWITCH COMP	1		
2-73	2294-18110	• CASE	1		
-74	3297-18120	• CLAMP	2		
-75	0277-10410	• SCREW	2		
-76	0260-00405	• SCREW	4		
-77	3238-14171	• SWITCH	1		
-78	3287-18130	• CORD(A)	1		
-79	3287-18140	• CORD(B)	1		
-80	0260-00405	• SCREW	2		
-81	3294-18150	• CLAMP	1		

## GUARD GROUP

	3128-24002	GUARD ASSY	} 3140-24000   or 1		Zenoah Scarlet
	3297-24000	GUARD ASSY			Mustard Yellow
2-82	3144-24110	• BRACKET (A)	1		
-83	3144-24120	• BRACKET (B)	1		
-84	3112-24131	• GUARD	or 1		Zenoah Scarlet
-84	3297-24130	• GUARD			Mustard Yellow
-85	0260-00510	• SCREW	4		
-86	0280-10504	• NUT	4		
-87	01601-20513	• WASHER	4		
-88	3128-24140	• CLAMP	1		
-89	3144-24150	• SPACER	1		
-90	0224-00530	• BOLT	1		
-91	0280-10504	• NUT	1		
-92	01601-20513	• WASHER	1		
-93	0280-10806	• NUT	1		
-94	0290-20820	• WASHER	1		

## ACCESSORY GROUP

Fig. & Index No.	Part No.	Part Name	Q' ty	Serial No.	Remarks
2- 95	3120-17111	PROTECTOR	1		
	3120-91003	TOOL SET	1		
- 96	1820-91111	• BAG	1		
- 97	0901-00810	• SPANNER	1		
- 98	0901-01317	• SPANNER	1		
- 99	3005-91211	• SOCKET	1		
- 100	1030-91340	• DRIVER	1		
- 101	3130-91121	• SPANNER	1		
- 102	3297-92110	• SAW, circular	1		80 teeth BLADE
- 103	3144-92122	• SAW, eddy	1		
- 104	3140-13260	• SHAFT	1		



# HOUSING GROUP

Fig. & Index No.	Part No.	Part Name	Q'ty	Serial No.	Remarks
	3297-11100	HOUSING COMP	} or 1		Zenoah Scarlet
	3297-11103	HOUSING COMP			Mustard Yellow
2- 1	3297-11110	• HOUSING	} or 1		☆3297-11100 Zenoah Scarlet
- 1	3297-11113	• HOUSING			☆3297-11103 Mustard Yellow
- 2	3120-11120	• SEAL	1		
- 3	0260-00610	• SCREW	1		
- 4	3146-11140	• GASKET	1		
- 5	0225-50620	BOLT	4		
- 6	3144-11211	HANGER	1		
- 7	3144-11231	CLAMP	1		
- 8	0224-10616	BOLT	2		
- 9	01642-20608	WASHER	1		
-10	3120-11230	CLAMP	1		
-11	0224-00610	BOLT	1		
-12	0290-20615	WASHER	1		
-13	3144-11240	CLAMP	1		
-14	0224-10620	BOLT	1		
-15	0280-10605	NUT	1		
	3128-11303	PIPE COMP	1		
-16	3128-11313	• PIPE	1		☆3128-11303
-17	3120-11323	• BUSHING	5		
-18	3120-11420	RING	1		
-19	3120-11430	PLATE	1		
-20	3120-12110	DRUM	1		
-21	06004-06203	BEARING	1		
-22	04065-04018	RING	1		
-23	04064-01710	RING	1		
-24	3128-12210	SHAFT	1		

# GEARCASE GROUP

Fig. & Index No.	Part No.	Part Name	Q'ty	Serial No.	Remarks
	3297-13000	GEARCASE ASSY	} or 1		Zenoah Scarlet
	3297-13003	GEARCASE ASSY			Mustard Yellow
2-25	3297-13110	• GEARCASE	} or 1		☆3297-13000 Zenoah Scarlet
-25	3297-13113	• GEARCASE			☆3297-13003 Mustard Yellow
-26	06000-06200	• BEARING	1		
-27	06000-06203	• BEARING	1		
-28	3100-13150	• SEAL	1		
-29	04065-04018	• RING	1		
-30	3120-13210	• SHAFT	1		
-31	3120-13220	• GEAR	1		
-32	3120-13233	• COLLAR	1		
-33	3127-13240	• HOLDER (A)	1		
-34	3120-13250	• HOLDER (B)	1		
-35	3130-13260	• BOLT	1		
-36	1000-43130	• WASHER	1		
-37	3100-16130	• WASHER	1		
-38	3144-13291	• COVER	1		
-39	0260-00510	• SCREW	1		
-40	07020-00000	• FITTING	1		
-41	3120-13311	• PINION	1		
-42	06000-06002	• BEARING	1		
-43	06001-06002	• BEARING	1		
-44	04064-01510	• RING	1		
-45	04065-03212	• RING	1		
-46	01016-50845	• BOLT	1		
-47	0290-20820	• WASHER	1		
-48	01641-20812	• WASHER	1		
-49	3130-13620	• SHIM	1		



# BRACKET GROUP

Fig. & Index No.	Part No.	Part Name	Q'ty	Serial No.	Remarks
	3298-14100	BRACKET ASSY	1 or 1		Zenoah Scarlet
	3298-14105	BRACKET ASSY			Mustard Yellow
2-50	3128-97110	· BRACKET (B)	1 or 1		Zenoah Scarlet
-50	3298-14110	· BRACKET (B)			Mustard Yellow
-51	3128-97120	· CAP, upper	1 or 1		Zenoah Scarlet
-51	3298-14120	· CAP, upper			Mustard Yellow
-52	3128-97130	· CUSHION (B)	2		
-53	0224-50630	· BOLT	4		
-54	3128-97210	· CLAMP	2		
-55	0224-00812	· BOLT	2		
-56	0280-10806	· NUT	2		
-57	3128-97140	· ABSORBER	4		
-58	3145-97150	· BRACKET (A)	1 or 1		Zenoah Scarlet
-58	3288-14150	· BRACKET (A)			Mustard Yellow
-59	3145-97160	· RING	1 or 2		Zenoah Scarlet
-59	3288-14160	· RING			Mustard Yellow
-60	3128-97170	· CUSHION (A)	2		
-61	0225-50516	· BOLT	4		
-62	3145-97180	· CAP, lower	1 or 1		Zenoah Scarlet
-62	3288-14180	· CAP, lower			Mustard Yellow
-63	0224-50630	· BOLT	2		

# HANDLE GROUP

	3298-14000	HANDLE ASSY	1		
2-64	3128-97220	· HANDLE	1		
-65	3145-14330	· GRIP	2		
-66	3128-14240	· STAY	2		
-67	3145-14350	· BOLT	2		
-68	0290-20820	· WASHER	2		
-69	3146-14410	· LEVER	1		

## HANGER GROUP

Fig. & Index No.	Part No.	Part Name	Q'ty	Serial No.	Remarks
	3146-17203	HARNES ASSY	1		
2-70	3146-17210	• PROTECTOR	2		
-71	3146-17220	• BELT	1		
-72	3146-17230	• BELT	2		
-73	3144-17240	• HOOK	1		
-74	3146-17251	• CUSHION	1		
-75	3146-17260	• BUCKLE	1		
-76	3146-17271	• PROTECTOR	1		

## SWITCH GROUP

	3297-18000	SWITCH COMP	1		
2-77	2294-18110	• CASE	1		
-78	3297-18120	• CLAMP	2		
-79	0277-10410	• SCREW	2		
-80	0260-00405	• SCREW	4		
-81	3238-14171	• SWITCH	1		
-82	3287-18130	• CORD(A)	1		
-83	3287-18140	• CORD(B)	1		
-84	0260-00405	• SCREW	2		
-85	3294-18150	• CLAMP	1		

## GUARD GROUP

	3128-24002	GUARD ASSY	or		Zenoah Scarlet
	3297-24000	GUARD ASSY			Mustard Yellow
2-86	3144-24110	• BRACKET (A)			
-87	3144-24120	• BRACKET (B)			
-88	3112-24131	• GUARD	or		Zenoah Scarlet
-88	3297-24130	• GUARD			Mustard Yellow
-89	0260-00510	• SCREW	4		
-90	0280-10504	• NUT	4		
-91	01601-20513	• WASHER	4		
-92	3128-24140	• CLAMP			
-93	3144-24150	• SPACER			
-94	0224-00530	• BOLT			
-95	0280-10504	• NUT			
-96	01601-20513	• WASHER			
-97	0280-10806	• NUT			
-98	0290-20820	• WASHER			

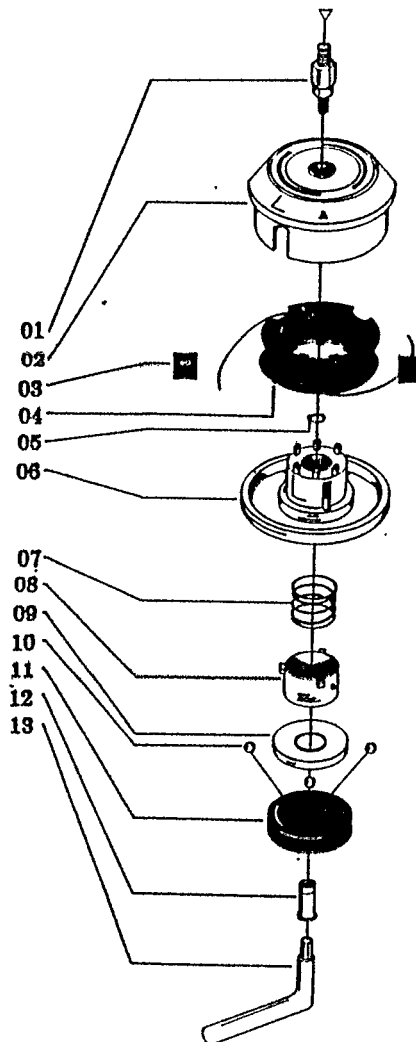
## ACCESSORY GROUP

Fig. & Index No.	Part No.	Part Name	Q' ty	Serial No.	Remarks
2- 99	3120-17111	PROTECTOR	1		
	3120-91003	TOOL SET	1		
- 100	1820-91111	• BAG	1		
- 101	0901-00810	• SPANNER	1		
- 102	0901-01317	• SPANNER	1		
- 103	3005-91211	• SOCKET	1		
- 104	1030-91340	• DRIVER	1		
- 105	3130-91121	• SPANNER	1		
- 106	3297-92110	• SAW, circular	1		80 teeth BLADE
- 107	3144-92122	• SAW, eddy	1		
- 108	3140-13260	• SHAFT	1		

# Reservedelsliste for Feed-Matic snørehoved

for 'TEXAS' buskryddere

1992/1



Pos.nr.	Best.nr.	Tekst
01	10-101007	Adapter for BC 220
01a	10-101008	Adapter for 340 M
01b	10-101010	Adapter for 431 M
02	10-101061	Spolehus
03	10-106003	Snørestyr
04	10-101030	Spole
05	10-103025	Låsering
06	10-101053	Bund for spolehus
06a	10-201003	Komplet bund pos. 5-12
07	10-107006	Fjeder
08	10-101069	Fjederholder
09	10-101070	Kugleskål
10	10-102073	Stålkugle
11	10-101071	Kugleholder
12	10-101056	Bolt
13	10-109006	Nøgle
14	22007100	Snørehoved for BC 220 7 MM
15	34008125	Snørehoved for 340 M 8 MM
16	43110125	Snørehoved for 431 M 10 MM

# OPTIONAL PARTS GROUP

Fig. 3

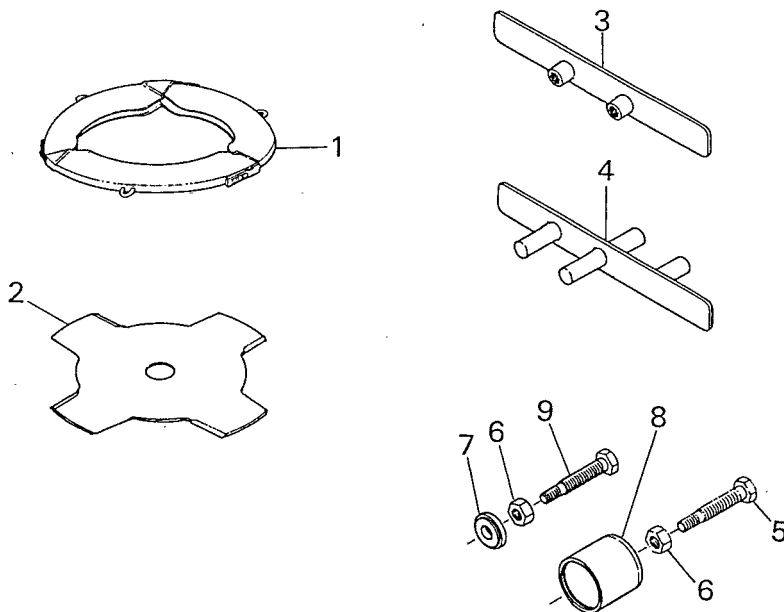
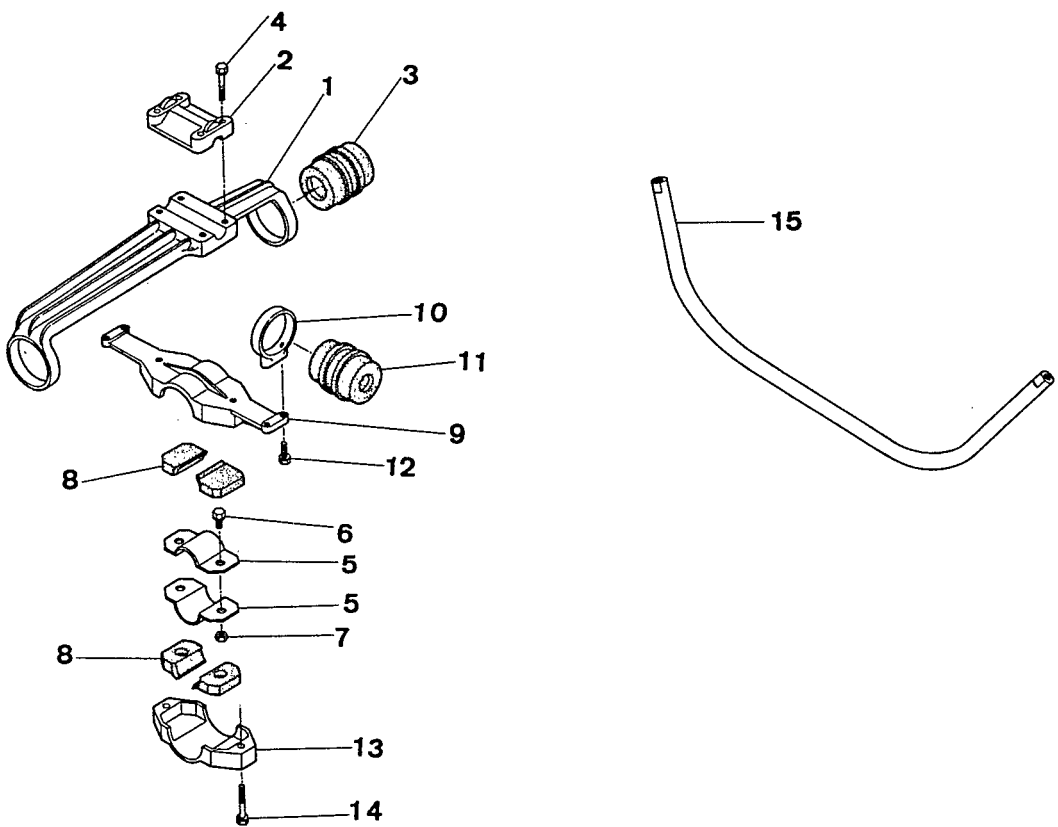


Fig. & Index No.	Part No.	Part Name	Q'ty	Serial No.	Remarks
3- 1	3220-94110	COVER	1		4 teeth BLADE
- 2	3197-92181	SAW, cross $\phi$ 255	1		
- 3	3120-96122	SPANNER (B)	1		
- 4	3180-96111	SPANNER (A)	1		
- 5	3120-96130	BOLT, puller	1		
- 6	0281-11613	NUT	1		
- 7	3120-96140	PULLER (A)	1		
- 8	3120-96160	PULLER (B)	1		
- 9	3120-96150	BOLT, puller	1		

ハンドル防振装置—FBC33・34用(OP)—ANTI-VIBRATION for FBC33, 34(OP)



図および索引番号 Fig. & Index No.	品番 Part No.	品名 Part Name	個数 Q'ty	適用号機 Serial No.	備考 Remarks
	3128-97100	ブラケット アセンブリ BRACKET ASSY	1		
1	3128-97110	・ブラケットB BRACKET(B)	1		
2	3128-97120	・キャップ アッパ CAP-UPPER	1		
3	3128-97130	・クッションB CUSION(B)	2		
4	0224-50630	・ボルト BOLT	4		
5	3128-97210	・クランプ CLAMP	2		
6	0224-00812	・ボルト BOLT	2		
7	0280-10806	・ナット NUT	2		
8	3128-97140	・アブソーバ ABSORBER	4		
9	3145-97150	・ブラケット BRACKET(A)	1		
10	3145-97160	・リング RING	2		
11	3128-97170	・クッションA CUSION	2		
12	0224-50516	・ボルト BOLT	4		
13	3145-97180	・キャップ ロア CAP-LOWER	1		
14	0224-50630	・ボルト BOLT	2		
15	3128-97220	・ハンドル HANDLE	1		