

Fig.2 CUTTER GROUP

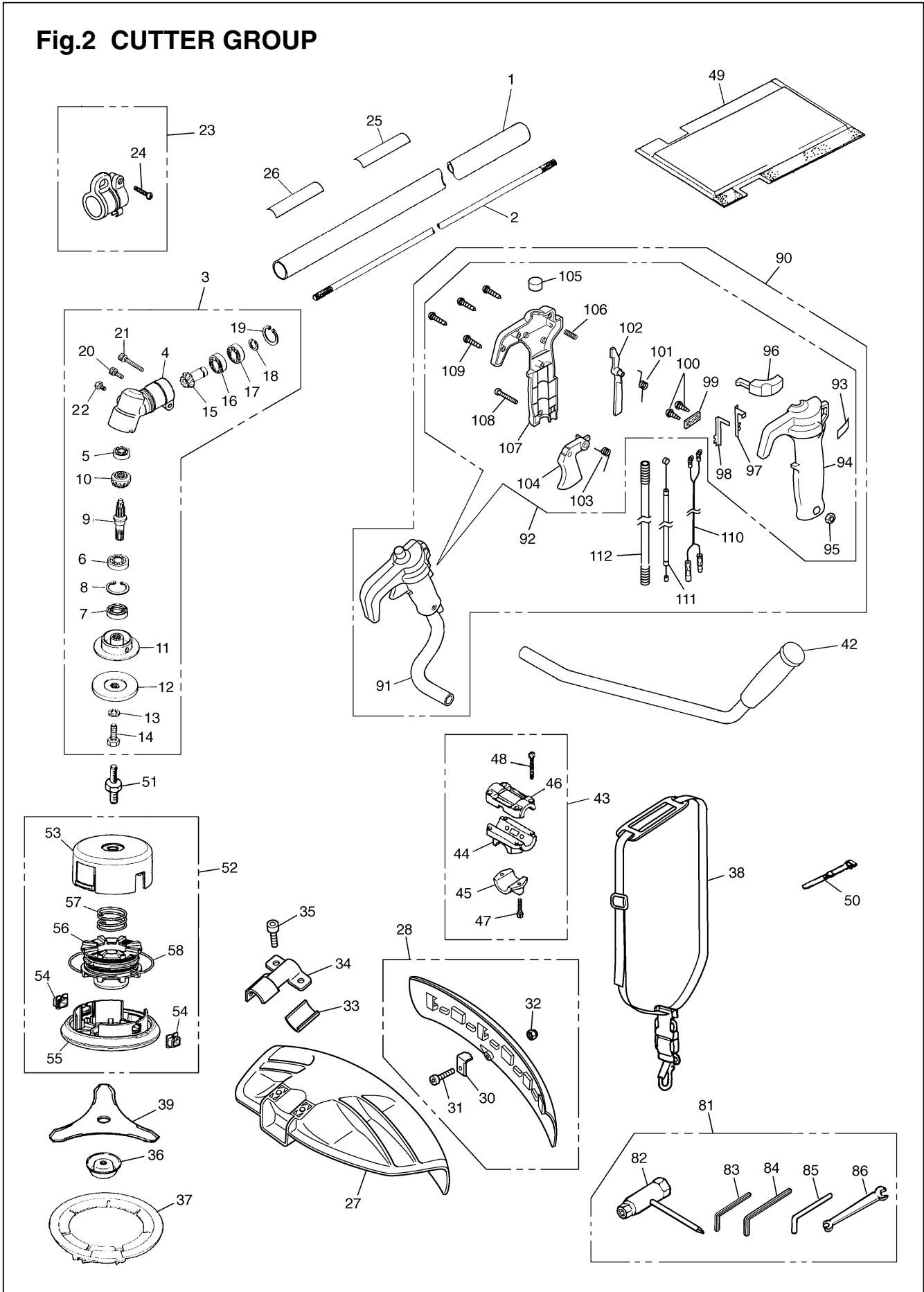


Fig.2 CUTTER GROUP

Key#	PART NUMBER	DESCRIPTION	Q'TY /UNIT	NOTE	Key#	PART NUMBER	DESCRIPTION	Q'TY /UNIT	NOTE
1	T3147-11300	PIPE COMP. 1500x24xT1.5	1		54	T3189-15191	• EYELET	2	
2	3520-12213	SHAFT, spline $\phi$ 7x7teeth	1	1536x7	55	T3189-15132	• COVER	1	
3	848JA06100	GEARCASE ASSY	1		56	T3189-15142	• CORD HOLDER	1	
4	6440-13122	• GEARCASE	1		57	T3189-15160	• SPRING	1	
5	06000-00626	• BEARING	1		58	T3189-15180	• CORD	1	
6	06000-06000	• BEARING	1		81	T3087-91000	TOOL-SET	1	
7	3565-13130	• SEAL	1		82	T3039-91310	• SOCKET	1	
8	04065-02612	• RING	1		83	09007-00425	• WRENCH	1	
9	6440-13211	• SHAFT	1		84	09007-00528	• WRENCH	1	
10	6440-13220	• GEAR	1		85	3540-91110	• BAR	1	
11	6440-13242	• HOLDER (A)	1		86	3540-91120	• SPANNER	1	
12	6019-13250	• HOLDER (B)	1		90	T3111-14100	HANDLE-R ASSY	1	
13	3560-13290	• WASHER	1		91	T3111-14110	• HANDLE-R	1	
14	3560-13261	• BOLT	1	M7x25(L)	92	K6010-000550	• GRIP&LEV COMP	1	
15	T3002-13310	• PINION	1		93	K2200-000040	• LABEL	1	
16	06000-00609	• BEARING	1		94	K2300-000050	• GRIP (L)	1	
17	06001-00609	• BEARING	1		95	B1181-040545	• NUT	1	
18	T3300-13330	• RING	1		96	K2300-000080	• SWITCH	1	
19	04065-02412	• RING	1		97	K5100-000030	• SPRING	1	
20	01252-30512	• BOLT	1		98	K5100-000040	• SPRING	1	
21	3350-21320	• BOLT	1	M5x30	99	K2300-000090	• HOLDER	1	
22	0224-40610	• BOLT	1		100	B1122-C2910H	• SCREW, tapping	2	M3x10
23	T3300-17202	HANGER COMP.	1		101	K5100-000020	• SPRING	1	
24	0263-90520	• SCREW	1		102	K2300-000070	• LEVER	1	
25	848JC290R0	PLATE NAME	1		103	K5100-000010	• SPRING	1	
26	6425-12552	PLATE CAUTION	1		104	K2300-000060	• LEVER	1	
27	848JL066A3	GUARD	1		105	K1300-000060	• PLUG	1	
28	848JL066B3	GUARD ASSY	1		106	K5100-000050	• SPRING	1	
30	848JL066B2	• BLADE	1		107	K2300-000040	• GRIP (R)	1	
31	4820-72150	• BOLT TORX	1	M4x16	108	B1111-A0530H	• SCREW	1	M5x30
32	3238-13150	• NUT	1	M4	109	B1122-C4220H	• SCREW, tapping	5	M4x20
33	3550-14170	SPACER	1		110	K5200-000060	• CORD	1	
34	848JC066C1	BRACKET	1		111	K5100-000130	• CABLE	1	
35	01252-30630	BOLT	2		112	K5200-000080	• TUBE	1	
36	3560-13284	COVER (BOLT)	1						
37	6251-15910	COVER (BLADE)	1						
38	T3300-17100	STRAP ASSY	1						
39	6298-E3390	BLADE	1						
42	T3111-14300	HANDLE-L COMP.	1						
43	3583-14101	BRACKET ASSY	1						
44	3583-14111	• BRACKET	1						
45	3583-14121	• CAP-L	1						
46	3257-14192	• CAP-U	1						
47	01252-30522	• BOLT	2						
48	01252-30525	• BOLT	4						
49	4050-17110	PROTECTOR	1						
50	3540-93120	BAND	1						
51	6041-99240	SHAFT	1						
52	T3189-15102	TAP HEAD COMP.	1						
53	T3189-15112	• CASE	1						

Fig.3 ENGINE GROUP

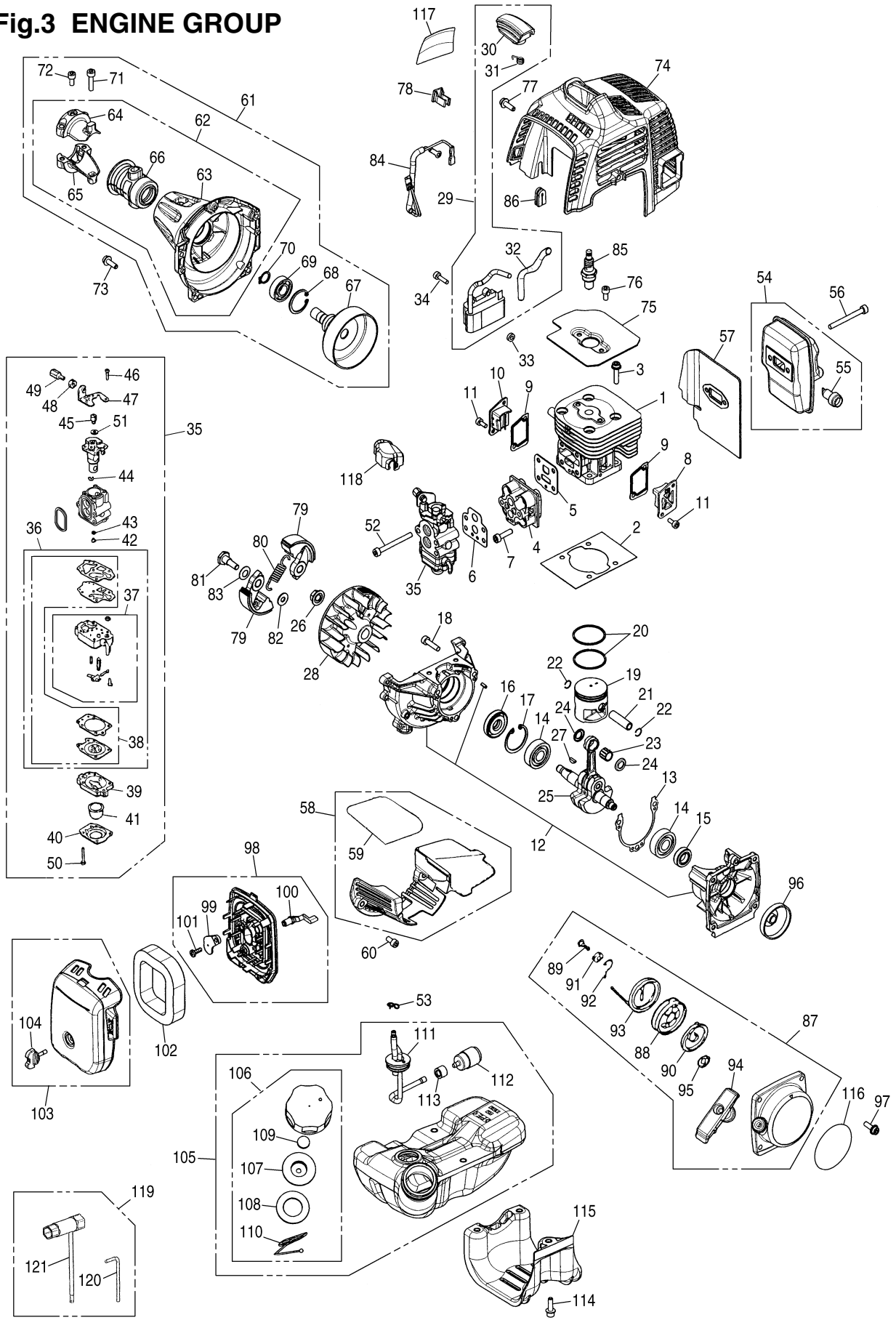


Fig.3 ENGINE GROUP

Key#	PART NUMBER	DESCRIPTION	Q'TY /UNIT	NOTE	Key#	PART NUMBER	DESCRIPTION	Q'TY /UNIT	NOTE
1	848F6012A1	CYLINDER	1		64	T1700-31212	•• BRACKET (A)	1	
2	T1590-12210	GASKET, base	1		65	T1700-31221	•• BRACKET (B)	1	
3	4820-12130	BOLT TORX	4	M5x22	66	T1700-31232	•• CUSHION	1	
4	848F6014A1	INSULATOR	1		67	T1590-31120	• DRUM	1	
5	T1590-13120	GASKET, insu	1		68	04065-02812	• SNAP RING	1	
6	T1590-13130	GASKET, carb	1		69	T1701-31150	• BEARING	1	
7	T4950-52021	BOLT TORX	4	M5x20	70	04064-01210	• SNAP RING	1	
8	848F6012C1	COVER, trs	1		71	4820-13180	• BOLT TORX	2	M5x20
9	848F6012E1	GASKET, tr	2		72	4820-12350	• BOLT TORX	1	M5x10
10	848F6012D2	COVER, trf	1		73	4820-85510	BOLT TORX	4	M5x16
11	4820-16310	BOLT TORX	4	M4x10	74	848F6031A1	COVER, engine	1	
12	848F602111	CRANKCASE COMP.	1		75	848F6012G1	PLATE, cyl	1	
13	848F6021D1	GASKET, case	1		76	4820-12350	BOLT TORX	2	M5x10
14	84889C3200	BEARING	2		77	4820-32120	BOLT TORX	2	M5x16
15	4810-21210	SEAL	1		78	T1600-72210	CLAMP	1	
16	1650-21220	SEAL	1		79	T1590-51110	SHOE	2	
17	04065-03212	SNAP RING	2		80	8488E93700	SPRING	1	
18	4820-13180	BOLT TORX	3	M5x20	81	1140-51250	SCREW	2	
19	848F6041A1	PISTON	1		82	1140-51230	WASHER	2	
20	T1590-41210	RING	2		83	8488728000	WASHER, wave	2	
21	T2200-41310	PIN	1		84	T1551-73200	CORD COMP.	1	
22	3310-41320	SNAP RING	2		85	T2070-73110	SPARK PLUG	1	
23	3310-41410	BEARING	1		86	4810-72120	GROMMET	1	
24	1650-41510	WASHER	2		87	T1551-75100	RECOIL ASSY	1	
25	848F604201	CRANKSHAFT COMP.	1		88	4500-75120	• REEL	1	
26	1650-43230	NUT	1		89	4500-75150	• SCREW	1	
27	1000-43240	KEY	1		90	1850-75130	• SPRING	1	
28	T1700-71110	ROTOR	1		91	4500-75180	• COLLAR	1	
29	T1590-71200	COIL ASSY	1		92	4500-75190	• ARM	1	
30	4810-72111	• CAP	1		93	4810-75160	• ROPE	1	
31	T1108-72120	• SPRING	1		94	3330-75421	• KNOB	1	
32	2850-71320	• TUBE	1		95	4810-75170	• PLATE	1	
33	1260-71261	SPACER	2		96	4500-75210	PULLEY	1	
34	4820-72150	BOLT TORX	2	M4x16	97	4820-32120	BOLT TORX	4	M5x16
35	848F608101	CARBURETOR ASSY	1		98	T1551-82100	BODY ASSY	1	
36	848F600630	• REBUILD KIT	1		99	T1512-82130	• PLATE, choke	1	
37	1850-81450	•• BODY ASSY	1		100	T1600-82140	• LEVER	1	
38	4810-06021	•• GASKET KIT	1		101	T1108-82190	• SCREW	1	
39	1850-81490	• BODY, purge	1		102	T1551-82170	ELEMENT	1	
40	1850-81520	• COVER, pump	1		103	T1551-82200	COVER ASSY	1	
41	1751-81510	• PUMP, priming	1		104	T1108-82220	• KNOB	1	
42	4810-81251	• JET	1		105	848F608501	TANK ASSY	1	
43	1751-81240	• O-RING	1		106	T1015-85202	• CAP ASSY	1	
44	1751-81130	• RING	1		107	4500-85300	•• HOLDER ASSY	1	
45	1881-81140	• SWIVEL	1		108	4500-85220	•• PACKING	1	
46	1752-81110	• SCREW	2		109	5601-85260	•• FILTER	1	
47	5500-81120	• BRACKET	1		110	4820-85260	•• STOPPER	1	
48	1751-81180	• NUT, adjuster	1		111	848F608530	• PIPE COMP.	1	
49	1918-81170	• SCREW, adjuster	1		112	3302-85400	• FILTER ASSY	1	
50	1850-81530	• SCREW	4		113	2841-31280	• COLLAR	1	
51	5500-81160	• WASHER	1		114	T4950-52030	BOLT TORX	3	M5x20
52	4820-15310	BOLT TORX	2	M5x50	115	848F6085Z0	GUARD, tank	1	
53	1950-86120	CLIP	1		116	848F6190C0	LABEL, recoil	1	
54	4810-15100	MUFFLER ASSY	1		117	T1504-31130	LABEL	1	
55	4810-15140	• ARRESTER	1		118	4500-81910	COVER	1	
56	4820-15310	BOLT TORX	2	M5x50					
57	848F6015C0	GASKET, muff	1						
58	848F601530	PLATE ASSY	1						
59	848F6015F0	• SHEET	1						
60	4820-12350	BOLT TORX	2	M5x10					
61	848F615300	HOUSING ASSY	1						
62	T1590-31100	• HOUSING COMP.	1						
63	T1590-31110	•• HOUSING	1						