

PARTS LIST

BRUSHCUTTERS

BC342DLM-1

BC342DWM-1

BC342DLM-1
BC342DWM-1

APPLICABLE SERIAL NUMBERS:

DRIVE UNIT 700101 and up

ENGINE UNIT 600101 and up

Fig.1 CUTTER GROUP

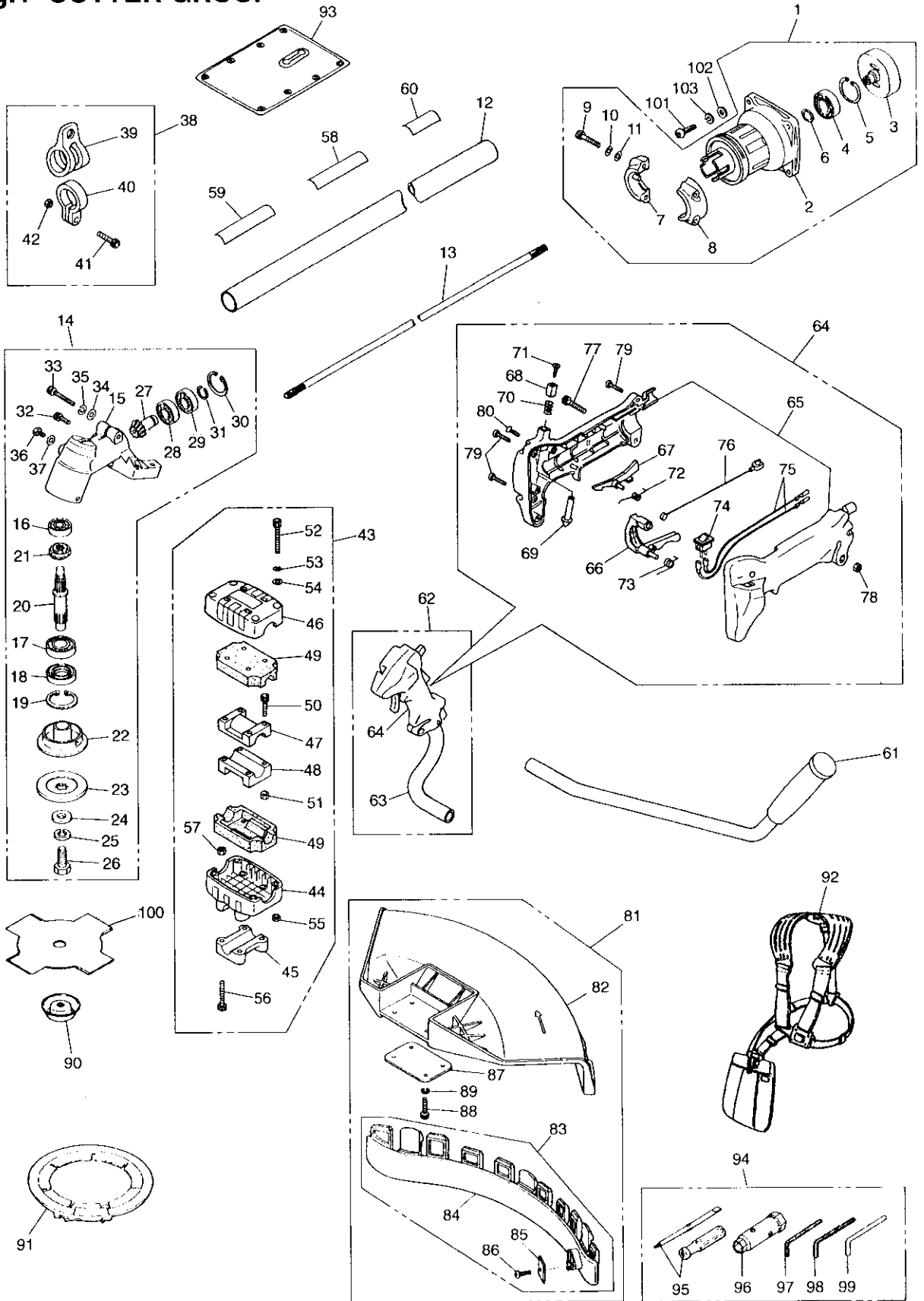


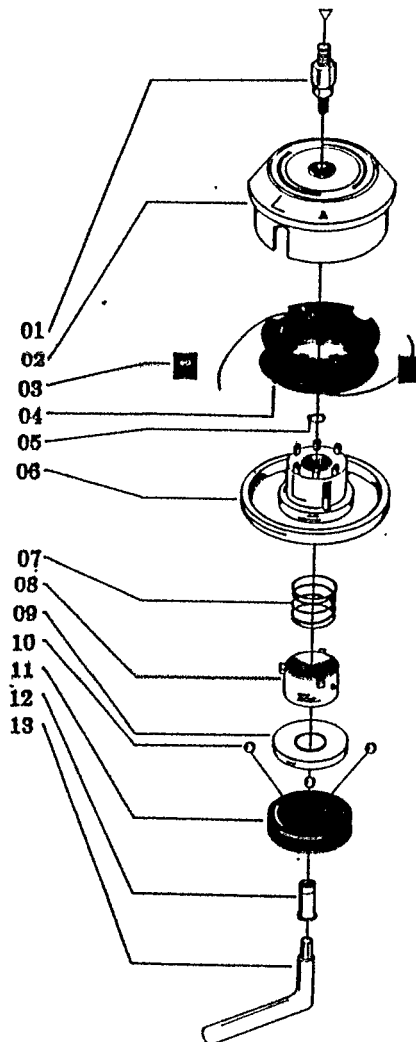
Fig.1 CUTTER GROUP

Key#	PART NUMBER	DESCRIPTION	Q'TY /UNIT	NOTE	Key#	PART NUMBER	DESCRIPTION	Q'TY /UNIT	NOTE
1	D10834	HOUSING ASSY	1		65	D10606	•• BODY	1	
2	D10918	• HOUSING COMP	1		66	D10613	•• LEVER	1	
3	D10745	• DRUM	1		67	D10612	•• LEVER	1	
4	D10218	• BEARING	1		68	D10610	•• BUTTON A	1	
5	5131	• RING	1		69	D10611	•• BUTTON B	1	
6	D10219	• RING	1		70	D10584	•• SPRING	1	
7	D10742	• CLAMP	1		71	D10802	•• SCREW	1	
8	D10743	• CLAMP	1		72	D10583	•• SPRING	1	
9	1172	• BOLT	2		73	D10579	•• SPRING	1	
10	1195	• WASHER	2		74	D10716	•• SWITCH	1	
11	1185	• WASHER	2		75	D10800	•• CORD	2	
12	D10617	PIPE COMP	1		76	D10585	•• CABLE	1	
13	D10107	SHAFT	1		77	1170	•• BOLT	1	M5x20
14	D10562	GEARCASE ASSY	1		78	1205	•• NUT	1	
15	D10601	• GEARCASE	1		79	D10921	•• SCREW	3	L20
16	D10270	• BEARING	1		80	D10323	•• SCREW	1	
17	D10578	• BEARING	1		81	D10570	GUARD ASSY	1	
18	D10549	• SEAL	1		82	D10655	• GUARD	1	
19	5131	• RING	1		83	D10653	• PLATE COMP	1	
20	D10546	• SHAFT	1		84	D10654	•• PLATE	1	
21	D10545	• GEAR	1		85	D10591	•• BLADE	1	
22	6251-13240	• HOLDER(A)	1		86	D10587	•• SCREW	1	
23	3540-13251	• HOLDER(B)	1		87	D10656	• PLATE	1	
24	D10590	• WASHER	1		88	5223	• BOLT	4	M5x16
25	D10589	• WASHER	1		89	1195	• WASHER	4	
26	D10595	• BOLT	1		90	D10522	COVER(BOLT)	1	
27	D10544	• PINION	1		91	D10540	COVER(BLADE)	1	
28	D10270	• BEARING	1		92	6220-17201	HARNES ASSY	1	
29	D10271	• BEARING	1		93	D10397	PROTRCTOR	1	
30	D10272	• RING	1		94	D10597	TOOL KIT	1	
31	D10273	• RING	1		95	D10332	• DRIVER	1	
32	D10222	• BOLT	1	M5x10	96	D10598	• SOCKET	1	
33	D10216	• BOLT	1		97	D10334	• WRENCH	1	
34	1186	• WASHER	1		98	1316	• WRENCH	1	
35	D10217	• WASHER	1		99	D10709	• BAR	1	
36	D10351	• BOLT	1	M6x10	100	6298-14343	SAW	1	
37	1186	• WASHER	1		101	1174	BOLT	4	M6x20
38	D10712	HANGER ASSY	1		102	1186	WASHER	4	
39	D10620	• HANGER	1		103	D10217	WASHER	4	
40	D10609	• CLAMP	1						
41	1171	• BOLT	1						
42	1205	• NUT	1						
43	D10576	BRACKET ASSY	1						
44	D10059	• BRACKET	1						
45	D10552	• CAP-L	1						
46	D10077	• CAP-U	1						
47	D10054	• CLAMP	1						
48	D10055	• CLAMP	1						
49	D10078	• ABSORBER	2						
50	D10721	• BOLT	4						
51	1205	• NUT	4						
52	D10588	• BOLT	4						
53	1195	• WASHER	4						
54	1185	• WASHER	4						
55	1205	• NUT	4						
56	1173	• BOLT	4						
57	1205	• NUT	4						
58	D10893	PLATE NAME	1						
59	D10560	PLATE CAUTION	1						
60	—	No. PLATE	1						
61	D10735	HANDLE-L COMP	1						
62	D10799	HANDLE-R COMP	1						
63	D10539	• HANDLE-R	1						
64	D10751	• GRIP ASSY	1						

Reservedelsliste for Feed-Matic snørehoved

for 'TEXAS' buskryddere

1992/1



Pos.nr.	Best.nr.	Tekst
01	10-101007	Adapter for BC 220
01a	10-101008	Adapter for 340 M
01b	10-101010	Adapter for 431 M
02	10-101061	Spolehus
03	10-106003	Snørestyr
04	10-101030	Spole
05	10-103025	Låsering
06	10-101053	Bund for spolehus
06a	10-201003	Komplet bund pos. 5-12
07	10-107006	Fjeder
08	10-101069	Fjederholder
09	10-101070	Kugleskål
10	10-102073	Stålkugle
11	10-101071	Kugleholder
12	10-101056	Bolt
13	10-109006	Nøgle
14	22007100	Snørehoved for BC 220 7 MM
15	34008125	Snørehoved for 340 M 8 MM
16	43110125	Snørehoved for 431 M 10 MM

Fig.2 ENGINE GROUP

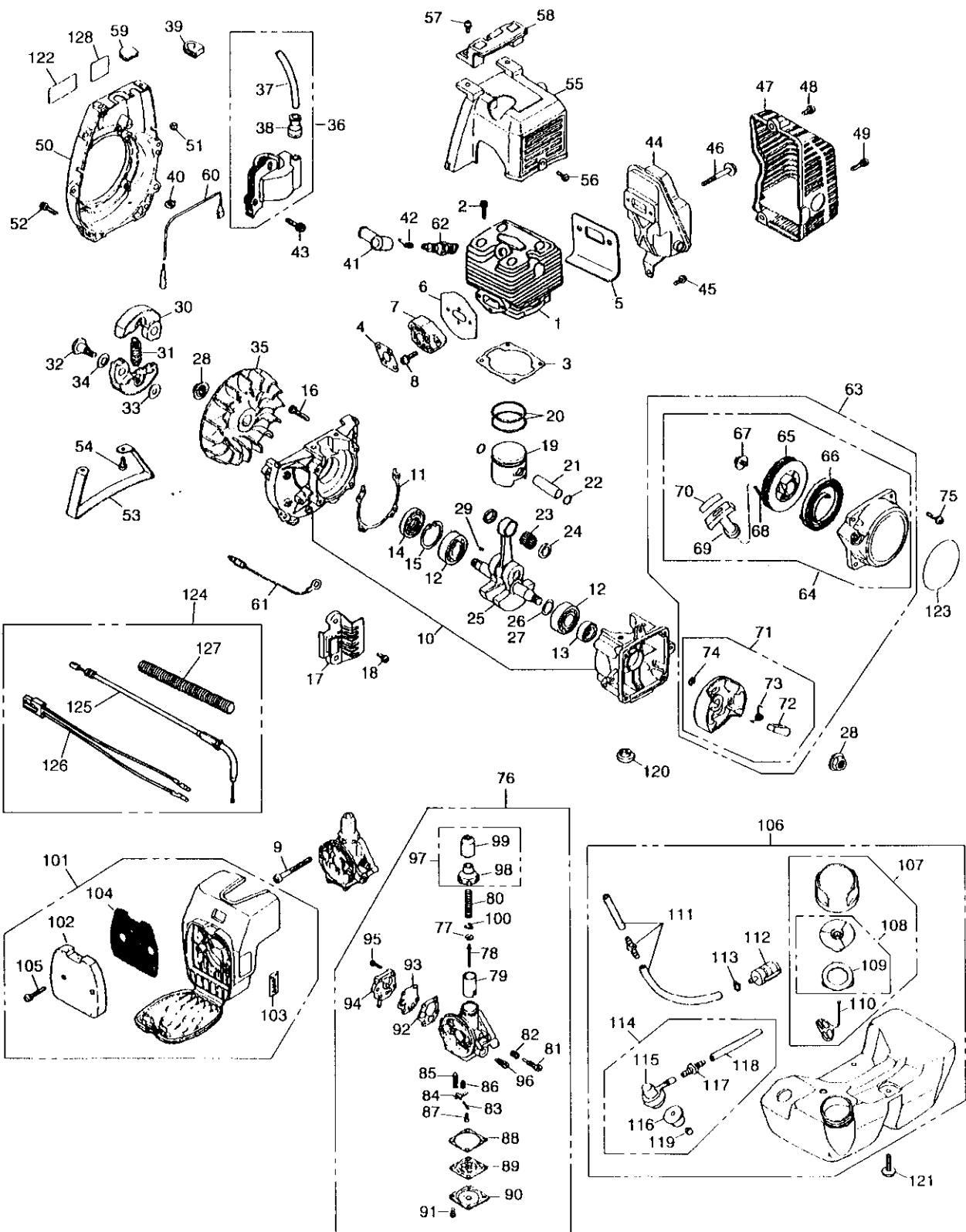


Fig.2 ENGINE GROUP

Key#	PART NUMBER	DESCRIPTION	Q'TY /UNIT	NOTE	Key#	PART NUMBER	DESCRIPTION	Q'TY /UNIT	NOTE
1	1650-12112	CYLINDER	1		65	1600-75120	•• REEL	1	
2	3310-12281	BOLT	4		66	1600-75130	•• SPRING	1	
3	1650-13120	GASKET	1		67	1600-75151	•• SCREW	1	
4	1600-13130	GASKET	1		68	1600-75160	•• ROPE	1	
5	1670-13141	GASKET	1		69	1140-75320	•• KNOB	1	
6	1600-13150	GASKET	1		70	1600-75180	•• TAPE	1	
7	1600-13160	INSULATOR	1		71	1600-75201	• PULLEY ASS'Y	1	
8	00263-90520	SCREW	2		72	1600-75220	•• RATCHET	1	
9	00260-00545	SCREW	2		73	1600-75230	•• SPRING	1	
10	1650-21102	CRANKCASE COMP	1		74	1034-72180	•• E-RING	1	
11	1650-21140	GASKET	1		75	00263-90520	SCREW	4	
12	06030-06201	BEARING	2		76	1672-81003	CARBURETOR ASS'Y	1	
13	2169-21210	SEAL	1		77	1600-81120	• RETAINER	1	
14	1650-21220	SEAL	1		78	1670-81130	• NEEDLE	1	
15	04065-03212	RING	1		79	1670-81140	• VALVE	1	
16	01252-30530	BOLT	4		80	1600-81150	• SPRING	1	
17	2155-21311	GUARD	1		81	1188-81162	• SCREW	1	
18	00263-90514	SCREW	2		82	1188-81170	• SPRING	1	
19	1650-41111	PISTON	1		83	1188-81180	• PIN	1	
20	1650-41210	RING	2		84	1188-81190	• ARM	1	
21	1650-41310	PIN	1		85	1188-81211	• VALVE	1	
22	3310-41320	RING	2		86	1188-81220	• SPRING	1	
23	3310-41410	BEARING	1		87	1188-81230	• SCREW	1	
24	1650-41510	WASHER	2		88	1600-81320	• GASKET	1	
25	1650-42000	CRANKSHAFT COMP	1		89	1600-81240	• DIAPHRAGM ASS'Y	1	
26	1130-43260	SHIM, 0.3t	0/1		90	1565-81240	• COVER	1	
27	1140-43250	SHIM, 0.1t	0/1		91	00260-10308	• SCREW	4	
28	1650-43230	NUT	2		92	1188-81280	• GASKET	1	
29	1000-43240	KEY	1		93	1670-81270	• DIAPHRAGM	1	
30	1400-51111	SHOE	2		94	1600-81260	• COVER ASS'Y	1	
31	1400-51220	SPRING	1		95	00260-10312	• SCREW	4	
32	1200-51211	SCREW	2		96	1188-81310	• NEEDLE	1	
33	1200-51230	WASHER	2		97	1188-81300	• CAP COMP	1	
34	1200-51240	WASHER	2		98	1188-81250	•• CAP	1	
35	2155-71110	ROTOR	1		99	1188-81330	•• SEAL	1	
36	2113-71200	COIL ASS'Y	1		100	1600-81411	• CLIP	1	
37	2113-71220	• CORD	1		101	1671-82001	CLEANER ASS'Y	1	
38	2616-71320	• CAP	1		102	1600-82120	• ELEMENT	1	
39	5500-72130	GROMMET	1		103	1133-82060	• LABEL	1	
40	1100-72120	GROMMET	1		104	1600-82140	• SCREEN	1	
41	1900-72111	CAP	1		105	00260-30422	• SCREW	2	
42	1900-72120	SPRING	1		106	2116-85000	TANK ASS'Y	1	
43	00263-90520	SCREW	2		107	2116-85201	• CAP ASS'Y	1	
44	1670-15110	MUFFLER	1		108	2116-85300	•• VALVE COMP	1	
45	00263-90512	SCREW	1		109	1600-85322	••• PACKING	1	
46	1650-15150	BOLT	2		110	3317-57242	•• STOPPER	1	
47	1670-15210	COVER	1		111	1606-85400	• PIPE COMP	1	
48	3310-12281	BOLT	1		112	3302-85400	• FILTER ASS'Y	1	
49	3350-21320	BOLT	1		113	1260-85460	• CLIP	1	
50	1650-31112	COVER, fan	1		114	1606-85601	• PUMP COMP	1	
51	1100-72120	GROMMET	1		115	1606-85610	•• PUMP	1	
52	3310-12281	BOLT	4		116	1600-85620	•• GROMMET	1	
53	3540-93110	STAND	1		117	1600-85630	•• JOINT	1	
54	3310-31720	BOLT	2		118	1000-03095	•• TUBE	1	
55	1670-32113	COVER, cylinder	1		119	1600-85651	•• VALVE	1	
56	00263-90512	SCREW	1		120	1600-86110	WASHER	3	
57	00263-90520	SCREW	2		121	1600-86120	SCREW	3	
58	1670-33110	GUARD	1		122	1660-31121	LABEL	3	
59	1650-31150	GROMMET	1		123	1654-75411	LABEL	1	
60	2313-71240	CORD	1		124	2249-83000	CABLE ASS'Y	1	
61	2116-71250	CORD, earth	1		125	2249-83100	• CABLE COMP	1	
62	5535-73110	SPARK PLUG	1		126	2249-73200	• CORD COMP	1	
63	1600-75001	STARTER ASS'Y	1		127	2249-73310	• TUBE	1	
64	1600-75101	• RECOIL ASS'Y	1		128	2634-31420	LABEL(CE)	1	