

PARTS LIST

BRUSHCUTTERS

**BC342DLM
BC342DWM**

APPLICABLE SERIAL NUMBERS:

DRIVE UNIT 600101 and up
ENGINE UNIT 500101 and up

NOVEMBER 1995

Fig.1 CUTTER GROUP

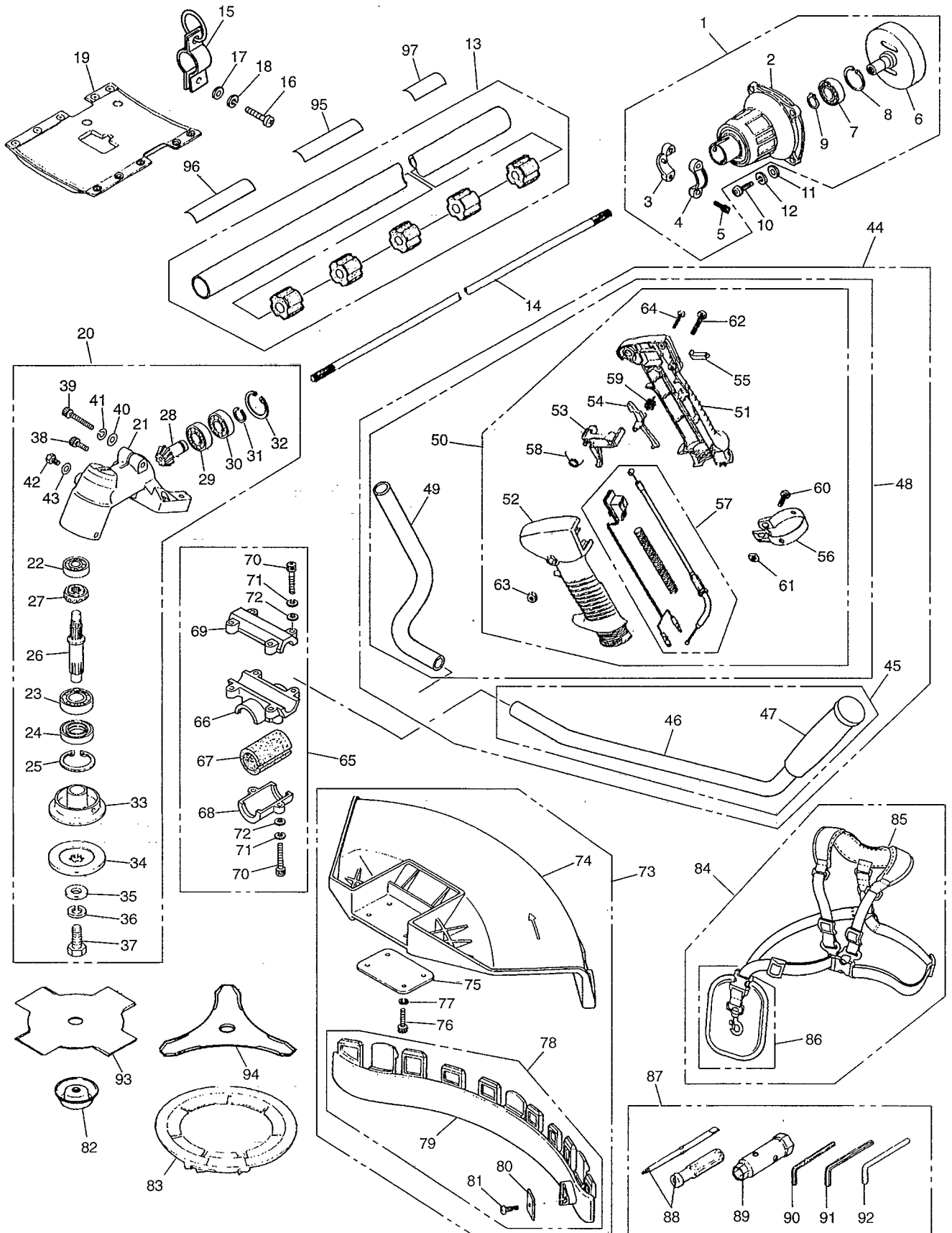


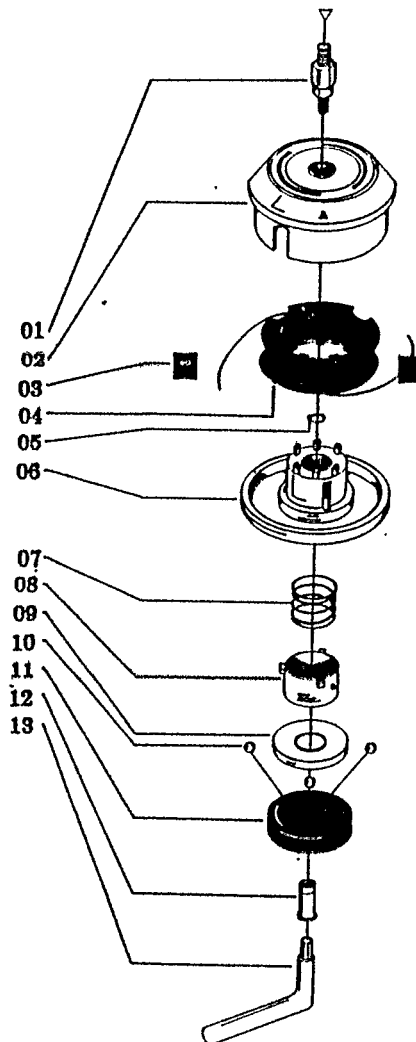
Fig.1 CUTTER GROUP

Key#	PART NUMBER	DESCRIPTION	Q'TY /UNIT	NOTE	Key#	PART NUMBER	DESCRIPTION	Q'TY /UNIT	NOTE
1	3531-11001	HOUSING ASS'Y	1		65	6577-14100	BRACKET ASS'Y	1	
2	3531-11101	• HOUSING COMP	1		66	6576-14110	• BRACKET	1	
3	3531-11131	• CLAMP(A)	1		67	6577-14140	• ABSORBER	1	
4	3531-11141	• CLAMP(B)	1		68	6576-14120	• CAP(L)	1	
5	3350-21320	• BOLT	2		69	6576-14130	• CAP(U)	1	
6	3530-11310	• DRUM	1		70	6576-14910	• BOLT	6	M6-25
7	06004-06202	• BEARING	1		71	6576-14920	• WASHER	6	
8	04065-03515	• RING	1		72	6574-13990	• WASHER	6	
9	04064-01510	• RING	1		73	6489-24000	GUARD ASS'Y	1	
10	6574-11910	BOLT	4	M6-20	74	6489-24110	• GUARD	1	
11	6574-13990	WASHER	4		75	6489-24120	• PLATE	1	
12	6576-14920	WASHER	4		76	6574-24910	• BOLT	4	M5-16
13	6577-12100	PIPE COMP	1		77	6574-13970	• WASHER	4	
14	6574-12210	SHAFT	1		78	6489-24200	• PLATE COMP	1	
15	6577-17100	HANGER	1		79	6489-24210	• PLATE	1	
16	6574-17910	SCREW	1	M5-10	80	6489-24220	• BLADE	1	
17	6574-13960	WASHER	1		81	00277-10412	• SCREW	1	
18	6574-13970	WASHER	1		82	6577-13280	COVER(BOLT)	1	
19	6576-17910	PROTECTOR	1		83	6574-15910	COVER(BLADE)	1	
20	6577-13000	GEARCASE ASS'Y	1		84	6577-17200	HARNES ASS'Y	1	
21	6577-13110	• GEARCASE	1		85	6577-17210	• BAND COMP	1	
22	6574-13820	• BEARING	1		86	6577-17220	• HOOK COMP	1	
23	6577-13810	• BEARING	1		87	6577-91000	TOOL KIT	1	
24	6577-13140	• SEAL	1		88	6574-91110	• DRIVER	1	
25	6577-13910	• RING	1		89	6577-91120	• SOCKET	1	
26	3540-13212	• SHAFT	1		90	09007-00425	• WRENCH	1	
27	3540-13220	• GEAR	1		91	09007-00528	• WRENCH	1	
28	6522-13310	• PINION	1		92	3540-91110	• BAR	1	
29	6574-13820	• BEARING	1		93	6298-14343	SAW	1	
30	6577-13820	• BEARING	1		94	6298-43390	SAW	1	
31	6577-13920	• RING	1		95	6577-12510	PLATE NAME	1	
32	6574-13910	• RING	1		96	6425-12552	PLATE CAUTION	1	
33	6251-13240	• HOLDER(A)	1		97	6577-12590	No. PLATE	1	
34	6577-13250	• HOLDER(B)	1						
35	6577-13930	• WASHER	1						
36	6577-13940	• WASHER	1						
37	3540-13290	• BOLT	1						
38	6574-13940	• BOLT	1	M5-10					
39	6577-13950	• BOLT	1	M6-35					
40	6574-13990	• WASHER	1						
41	6576-14920	• WASHER	1	M6-10					
42	6574-13980	• BOLT	1						
43	6574-13990	• WASHER	1						
44	6577-14200	HANDLE ASS'Y	1						
45	6576-14300	• HANDLE(L)ASS'Y	1						
46	6576-14310	• HANDLE	1						
47	6576-14320	• GRIP	1						
48	6577-14400	• HANDLE(R)ASS'Y	1						
49	6576-14410	• HANDLE	1						
50	2218-84000	• GRIP ASS'Y	1						
51	5935-84110	• STAY(R)	1						
52	5935-84120	• STAY(L)	1						
53	1638-84130	• LEVER	1						
54	1638-84140	• LEVER	1						
55	1638-84150	• LOCK	1						
56	1638-84160	• CLAMP	1						
57	2218-84300	• SWITCH COMP	1						
58	1638-84170	• SPRING	1						
59	1638-84180	• SPRING	1						
60	00263-60620	• SCREW	1						
61	1638-84190	• NUT	1						
62	00260-60535	• SCREW	1						
63	1638-84210	• NUT	1						
64	1638-84220	• SCREW	1						

Reservedelsliste for Feed-Matic snørehoved

for 'TEXAS' buskryddere

1992/1



Pos.nr.	Best.nr.	Tekst
01	10-101007	Adapter for BC 220
01a	10-101008	Adapter for 340 M
01b	10-101010	Adapter for 431 M
02	10-101061	Spolehus
03	10-106003	Snørestyr
04	10-101030	Spole
05	10-103025	Låsering
06	10-101053	Bund for spolehus
06a	10-201003	Komplet bund pos. 5-12
07	10-107006	Fjeder
08	10-101069	Fjederholder
09	10-101070	Kugleskål
10	10-102073	Stålkugle
11	10-101071	Kugleholder
12	10-101056	Bolt
13	10-109006	Nøgle
14	22007100	Snørehoved for BC 220 7 MM
15	34008125	Snørehoved for 340 M 8 MM
16	43110125	Snørehoved for 431 M 10 MM

Fig.2 ENGINE GROUP

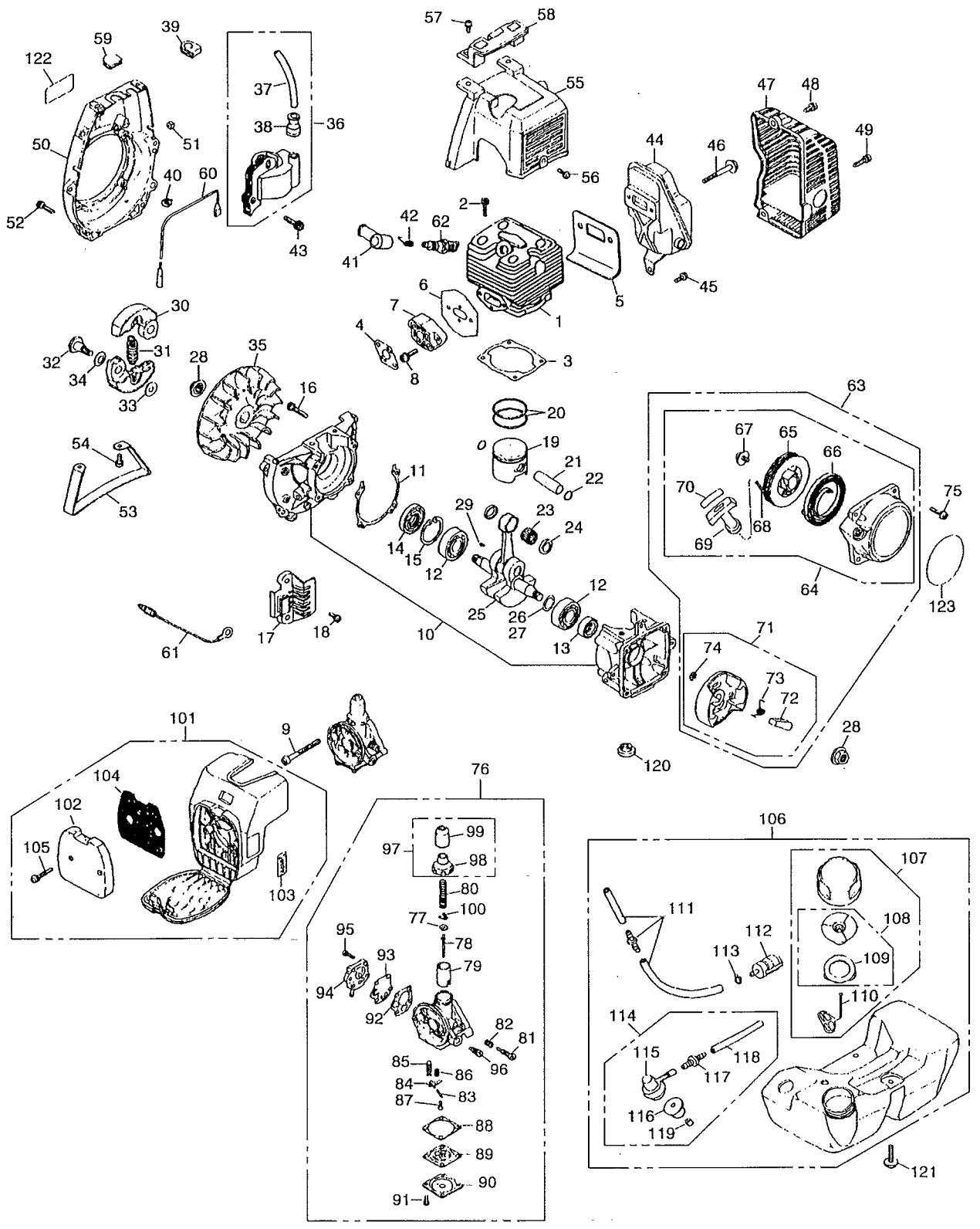


Fig.2 ENGINE GROUP

Key#	PART NUMBER	DESCRIPTION	Q'TY /UNIT	NOTE	Key#	PART NUMBER	DESCRIPTION	Q'TY /UNIT	NOTE
1	1650-12112	CYLINDER	1		65	1600-75120	•• REEL	1	
2	3310-12281	BOLT	4		66	1600-75130	•• SPRING	1	
3	1650-13120	GASKET	1		67	1600-75151	•• SCREW	1	
4	1600-13130	GASKET	1		68	1600-75160	•• ROPE	1	
5	1670-13141	GASKET	1		69	1140-75320	•• KNOB	1	
6	1600-13150	GASKET	1		70	1600-75180	•• TAPE	1	
7	1600-13160	INSULATOR	1		71	1600-75201	• PULLEY ASS'Y	1	
8	00263-90520	SCREW	2		72	1600-75220	•• RATCHET	1	
9	00260-00545	SCREW	2		73	1600-75230	•• SPRING	1	
10	1650-21102	CRANKCASE COMP	1		74	1034-72180	•• E-RING	1	
11	1650-21140	GASKET	1		75	00263-90520	SCREW	4	
12	06030-06201	BEARING	2		76	1672-81003	CARBURETOR ASS'Y	1	
13	2169-21210	SEAL	1		77	1600-81120	• RETAINER	1	
14	1650-21220	SEAL	1		78	1670-81130	• NEEDLE	1	
15	04065-03212	RING	1		79	1670-81140	• VALVE	1	
16	01252-30530	BOLT	4		80	1600-81150	• SPRING	1	
17	2155-21311	GUARD	1		81	1188-81162	• SCREW	1	
18	00263-90514	SCREW	2		82	1188-81170	• SPRING	1	
19	1650-41111	PISTON	1		83	1188-81180	• PIN	1	
20	1650-41210	RING	2		84	1188-81190	• ARM	1	
21	1650-41310	PIN	1		85	1188-81211	• VALVE	1	
22	3310-41320	RING	2		86	1188-81220	• SPRING	1	
23	3310-41410	BEARING	1		87	1188-81230	• SCREW	1	
24	1650-41510	WASHER	2		88	1600-81320	• GASKET	1	
25	1650-42000	CRANKSHAFT COMP	1		89	1600-81240	• DIAPHRAGM ASS'Y	1	
26	1130-43260	SHIM, 0.3t	0/1		90	1565-81240	• COVER	1	
27	1140-43250	SHIM, 0.1t	0/1		91	00260-10308	• SCREW	4	
28	1650-43230	NUT	2		92	1188-81280	• GASKET	1	
29	1000-43240	KEY	1		93	1670-81270	• DIAPHRAGM	1	
30	1400-51110	SHOE	2		94	1600-81260	• COVER ASS'Y	1	
31	1400-51220	SPRING	1		95	00260-10312	• SCREW	4	
32	1200-51211	SCREW	2		96	1188-81310	• NEEDLE	1	
33	1200-51230	WASHER	2		97	1188-81300	• CAP COMP	1	
34	1200-51240	WASHER	2		98	1188-81250	•• CAP	1	
35	2155-71110	ROTOR	1		99	1188-81330	•• SEAL	1	
36	2113-71200	COIL ASS'Y	1		100	1600-81411	• CLIP	1	
37	2113-71220	• CORD	1		101	1671-82001	CLEANER ASS'Y	1	
38	2616-71320	• CAP	1		102	1600-82120	• ELEMENT	1	
39	5500-72130	GROMMET	1		103	1133-82060	• LABEL	1	
40	1100-72120	GROMMET	1		104	1600-82140	• SCREEN	1	
41	1900-72111	CAP	1		105	00260-30422	• SCREW	2	
42	1900-72120	SPRING	1		106	2116-85000	TANK ASS'Y	1	
43	00263-90520	SCREW	2		107	2116-85201	• CAP ASS'Y	1	
44	1670-15110	MUFFLER	1		108	2116-85300	•• VALVE COMP	1	
45	00263-90512	SCREW	1		109	1600-85322	••• PACKING	1	
46	1650-15150	BOLT	2		110	3317-57242	•• STOPPER	1	
47	1670-15210	COVER	1		111	1606-85400	• PIPE COMP	1	
48	3310-12281	BOLT	1		112	3302-85400	• FILTER ASS'Y	1	
49	3350-21320	BOLT	1		113	1260-85460	• CLIP	1	
50	1650-31112	COVER, fan	1		114	1606-85601	• PUMP COMP	1	
51	1100-72120	GROMMET	1		115	1606-85610	•• PUMP	1	
52	3310-12281	BOLT	4		116	1600-85620	•• GROMMET	1	
53	3540-93110	STAND	1		117	1600-85630	•• JOINT	1	
54	3310-31720	BOLT	2		118	1000-03095	•• TUBE	1	
55	1670-32113	COVER, cylinder	1		119	1600-85651	•• VALVE	1	
56	00263-90512	SCREW	1		120	1600-86110	WASHER	3	
57	00263-90520	SCREW	2		121	1600-86120	SCREW	3	
58	1670-33110	GUARD	1		122	1660-31121	LABEL	3	
59	1630-72150	GROMMET	1		123	1654-75411	LABEL	1	
60	2116-71240	CORD	1						
61	2116-71250	CORD, earth	1						
62	5535-73110	SPARK PLUG	1						
63	1600-75001	STARTER ASS'Y	1						
64	1600-75101	• RECOIL ASS'Y	1						

Fig.1 CUTTER GROUP

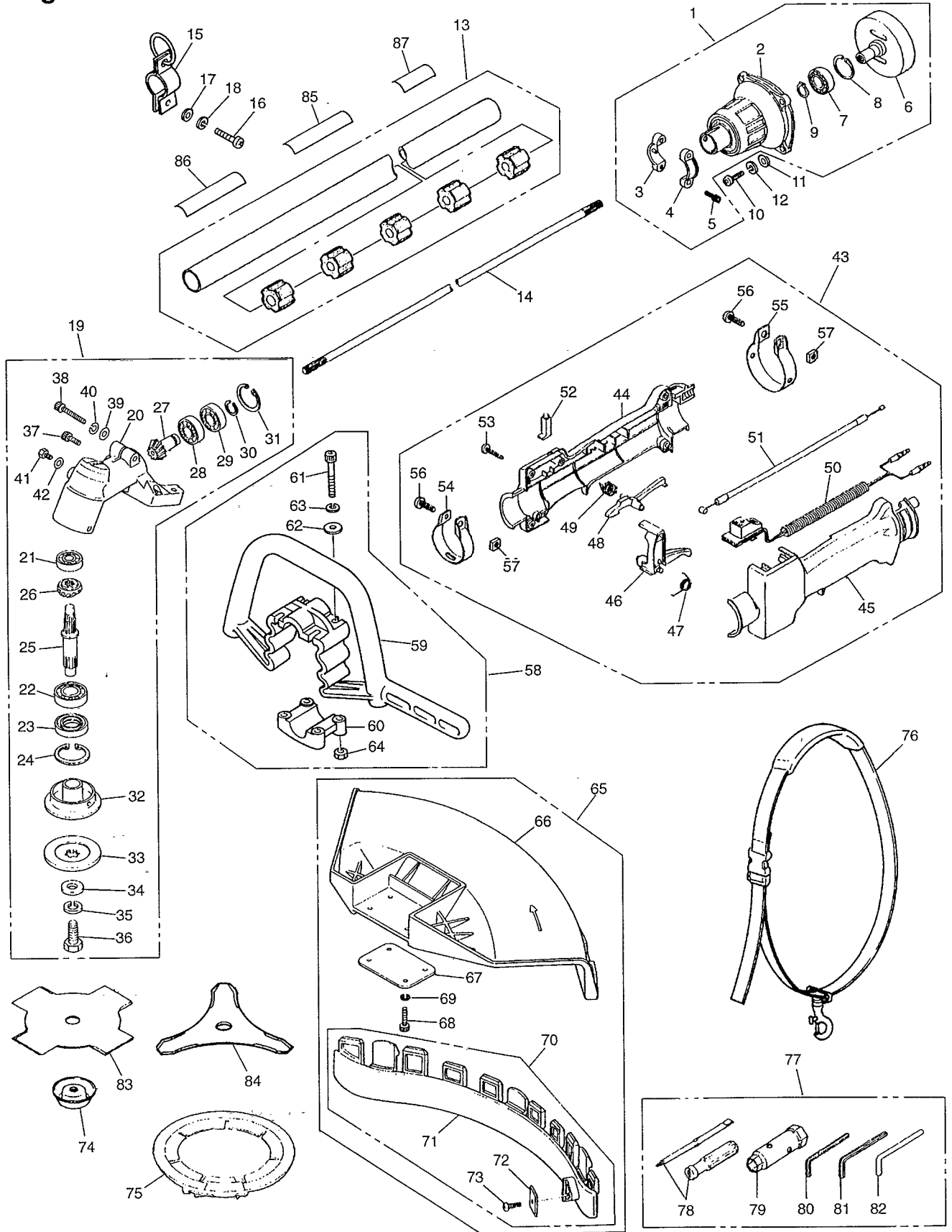


Fig.1 CUTTER GROUP

Key#	PART NUMBER	DESCRIPTION	Q'TY /UNIT	NOTE	Key#	PART NUMBER	DESCRIPTION	Q'TY /UNIT	NOTE
1	3531-11001	HOUSING ASS'Y	1		65	6489-24000	GUARD ASS'Y	1	
2	3531-11101	• HOUSING COMP	1		66	6489-24110	• GUARD	1	
3	3531-11131	• CLAMP(A)	1		67	6489-24120	• PLATE	1	
4	3531-11141	• CLAMP(B)	1		68	6574-24910	• BOLT	4	M5-16
5	3350-21320	• BOLT	2		69	6574-13970	• WASHER	4	
6	3530-11310	• DRUM	1		70	6489-24200	• PLATE COMP	1	
7	06004-06202	• BEARING	1		71	6489-24210	•• PLATE	1	
8	04065-03515	• RING	1		72	6489-24220	•• BLADE	1	
9	04064-01510	• RING	1		73	00277-10412	•• SCREW	1	
10	6574-11910	BOLT	4	M6-20	74	6577-13280	COVER(BOLT)	1	
11	6574-13990	WASHER	4		75	6574-15910	COVER(BLADE)	1	
12	6576-14920	WASHER	4		76	6574-17200	STRAP ASS'Y	1	
13	6577-12100	PIPE COMP	1		77	6577-91000	TOOLKIT	1	
14	6574-12210	SHAFT	1		78	6574-91110	• DRIVER	1	
15	6577-17100	HANGER	1		79	6577-91120	• SOCKET	1	
16	6574-17910	SCREW	1	M5-10	80	09007-00425	• WRENCH	1	
17	6574-13960	WASHER	1		81	09007-00528	• WRENCH	1	
18	6574-13970	WASHER	1		82	3540-91110	• BAR	1	
19	6577-13000	GEARCASE ASS'Y	1		83	6298-14343	SAW	1	
20	6577-13110	• GEARCASE	1		84	6298-43390	SAW	1	
21	6574-13820	• BEARING	1		85	6578-12510	PLATE NAME	1	
22	6577-13810	• BEARING	1		86	6425-12552	PLATE CAUTION	1	
23	6577-13140	• SEAL	1		87	6578-12590	No. PLATE	1	
24	6577-13910	• RING	1						
25	3540-13212	• SHAFT	1						
26	3540-13220	• GEAR	1						
27	6522-13310	• PINION	1						
28	6574-13820	• BEARING	1						
29	6577-13820	• BEARING	1						
30	6577-13920	• RING	1						
31	6574-13910	• RING	1						
32	6251-13240	• HOLDER(A)	1						
33	6577-13250	• HOLDER(B)	1						
34	6577-13930	• WASHER	1						
35	6577-13940	• WASHER	1						
36	3540-13290	• BOLT	1						
37	6574-13940	• BOLT	1	M5-10					
38	6577-13950	• BOLT	1	M6-35					
39	6574-13990	• WASHER	1						
40	6576-14920	• WASHER	1						
41	6574-13980	• BOLT	1	M6-10					
42	6574-13990	• WASHER	1						
43	6528-12200	GRIP ASS'Y	1						
44	6528-12210	• STAY(R)	1						
45	6528-12220	• STAY(L)	1						
46	6464-12230	• LEVER	1						
47	1638-84170	• SPRING	1						
48	6464-12240	• LEVER	1						
49	1638-84180	• SPRING	1						
50	6528-12230	• SWITCH COMP	1						
51	6464-12260	• CABLE COMP	1						
52	1638-84150	• LOCK	1						
53	1638-84220	• SCREW	4						
54	1638-84160	• CLAMP	1						
55	6464-12250	• CLAMP	1						
56	00263-60620	• SCREW	2						
57	1638-84190	• NUT	2						
58	6577-14000	HANDLE ASS'Y	1						
59	6577-14110	• HANDLE	1						
60	6577-14120	• CLAMP	1						
61	6574-13950	• SCREW	4	M5-30					
62	6574-13960	• WASHER	4						
63	6574-13970	• WASHER	4						
64	6574-14910	• NUT	4						

Fig.2 ENGINE GROUP

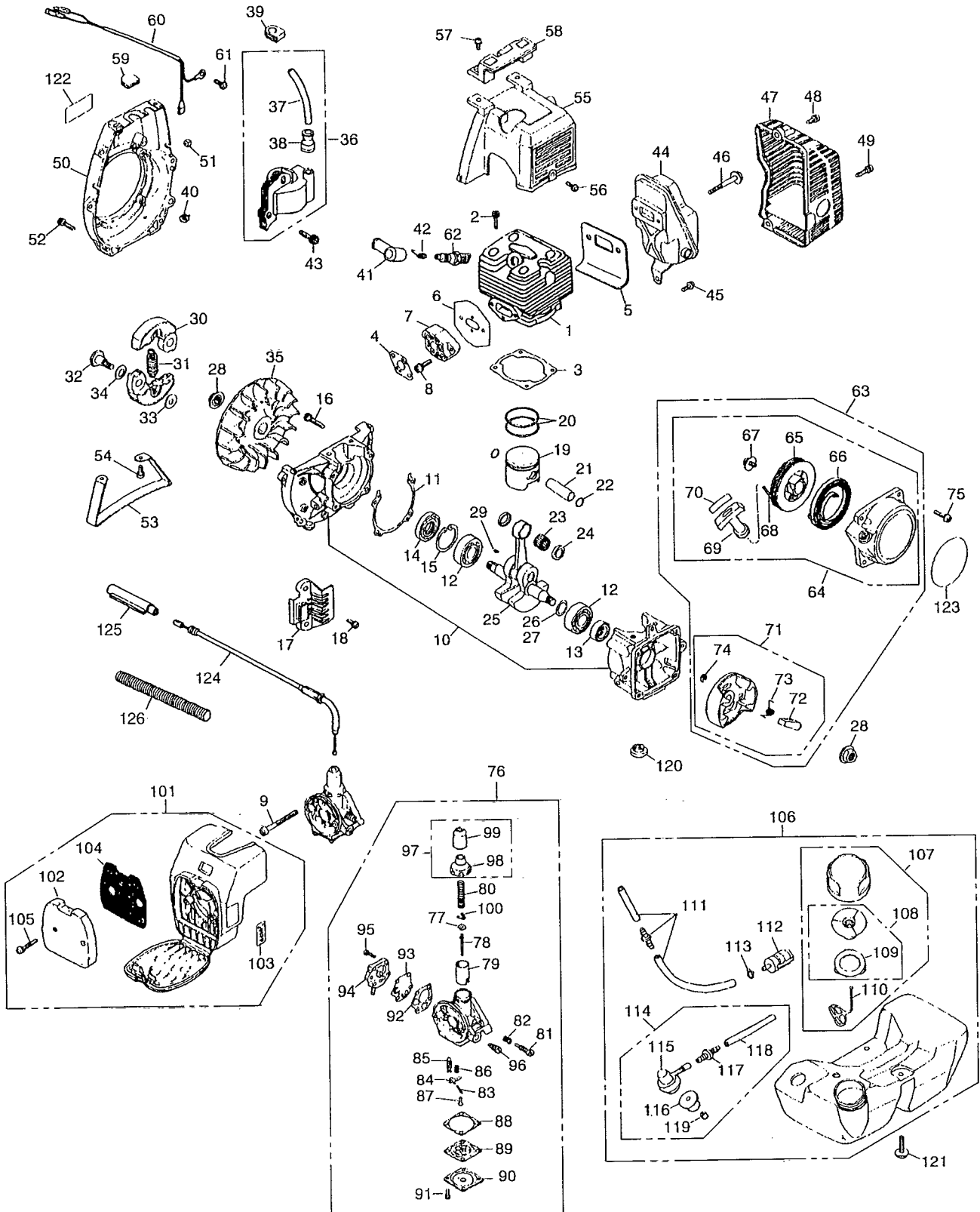


Fig.2 ENGINE GROUP

Key#	PART NUMBER	DESCRIPTION	Q'TY /UNIT	NOTE	Key#	PART NUMBER	DESCRIPTION	Q'TY /UNIT	NOTE
1	1650-12112	CYLINDER	1		65	1600-75120	•• REEL	1	
2	3310-12281	BOLT	4		66	1600-75130	•• SPRING	1	
3	1650-13120	GASKET	1		67	1600-75151	•• SCREW	1	
4	1600-13130	GASKET	1		68	1600-75160	•• ROPE	1	
5	1670-13141	GASKET	1		69	1140-75320	•• KNOB	1	
6	1600-13150	GASKET	1		70	1600-75180	•• TAPE	1	
7	1600-13160	INSULATOR	1		71	1600-75201	• PULLEY ASS'Y	1	
8	00263-90520	SCREW	2		72	1600-75220	•• RATCHET	1	
9	00260-00545	SCREW	2		73	1600-75230	•• SPRING	1	
10	1650-21102	CRANKCASE COMP	1		74	1034-72180	•• E-RING	1	
11	1650-21140	GASKET	1		75	00263-90520	SCREW	4	
12	06030-06201	BEARING	2		76	1672-81003	CARBURETOR ASS'Y	1	
13	2169-21210	SEAL	1		77	1600-81120	• RETAINER	1	
14	1650-21220	SEAL	1		78	1670-81130	• NEEDLE	1	
15	04065-03212	RING	1		79	1670-81140	• VALVE	1	
16	01252-30530	BOLT	4		80	1600-81150	• SPRING	1	
17	2155-21311	GUARD	1		81	1188-81162	• SCREW	1	
18	00263-90514	SCREW	2		82	1188-81170	• SPRING	1	
19	1650-41111	PISTON	1		83	1188-81180	• PIN	1	
20	1650-41210	RING	2		84	1188-81190	• ARM	1	
21	1650-41310	PIN	1		85	1188-81211	• VALVE	1	
22	3310-41320	RING	2		86	1188-81220	• SPRING	1	
23	3310-41410	BEARING	1		87	1188-81230	• SCREW	1	
24	1650-41510	WASHER	2		88	1600-81320	• GASKET	1	
25	1650-42000	CRANKSHAFT COMP	1		89	1600-81240	• DIAPHRAGM ASS'Y	1	
26	1130-43260	SHIM, 0.3t	0/1		90	1565-81240	• COVER	1	
27	1140-43250	SHIM, 0.1t	0/1		91	00260-10308	• SCREW	4	
28	1650-43230	NUT	2		92	1188-81280	• GASKET	1	
29	1000-43240	KEY	1		93	1670-81270	• DIAPHRAGM	1	
30	1400-51110	SHOE	2		94	1600-81260	• COVER ASS'Y	1	
31	1400-51220	SPRING	1		95	00260-10312	• SCREW	4	
32	1200-51211	SCREW	2		96	1188-81310	• NEEDLE	1	
33	1200-51230	WASHER	2		97	1188-81300	• CAP COMP	1	
34	1200-51240	WASHER	2		98	1188-81250	•• CAP	1	
35	2155-71110	ROTOR	1		99	1188-81330	•• SEAL	1	
36	2113-71200	COIL ASS'Y	1		100	1600-81411	• CLIP	1	
37	2113-71220	• CORD	1		101	1671-82001	CLEANER ASS'Y	1	
38	2616-71320	• CAP	1		102	1600-82120	• ELEMENT	1	
39	5500-72130	GROMMET	1		103	1133-82060	• LABEL	1	
40	1100-72120	GROMMET	1		104	1600-82140	• SCREEN	1	
41	1900-72111	CAP	1		105	00260-30422	• SCREW	2	
42	1900-72120	SPRING	1		106	2116-85000	TANK ASS'Y	1	
43	00263-90520	SCREW	2		107	2116-85201	• CAP ASS'Y	1	
44	1670-15110	MUFFLER	1		108	2116-85300	•• VALVE COMP	1	
45	00263-90512	SCREW	1		109	1600-85322	••• PACKING	1	
46	1650-15150	BOLT	2		110	3317-57242	•• STOPPER	1	
47	1670-15210	COVER	1		111	1606-85400	• PIPE COMP	1	
48	3310-12281	BOLT	1		112	3302-85400	• FILTER ASS'Y	1	
49	3350-21320	BOLT	1		113	1260-85460	• CLIP	1	
50	1650-31112	COVER, fan	1		114	1606-85601	• PUMP COMP	1	
51	1100-72120	GROMMET	1		115	1606-85610	•• PUMP	1	
52	3310-12281	BOLT	4		116	1600-85620	•• GROMMET	1	
53	3540-93110	STAND	1		117	1600-85630	•• JOINT	1	
54	3310-31720	BOLT	2		118	1000-03095	•• TUBE	1	
55	1670-32113	COVER, cylinder	1		119	1600-85651	•• VALVE	1	
56	00263-90512	SCREW	1		120	1600-86110	WASHER	3	
57	00263-90520	SCREW	2		121	1600-86120	SCREW	3	
58	1670-33110	GUARD	1		122	1660-31121	LABEL	3	
59	1630-72150	GROMMET	1		123	1654-75411	LABEL	1	
60	2123-72910	CORD	1		124	1636-83000	CABLE ASS'Y	1	
61	0263-90512	SCREW	1		125	1477-83210	CASE	1	
62	5535-73110	SPARK PLUG	1		126	2123-72310	TUBE	1	
63	1600-75001	STARTER ASS'Y	1						
64	1600-75101	• RECOIL ASS'Y	1						