



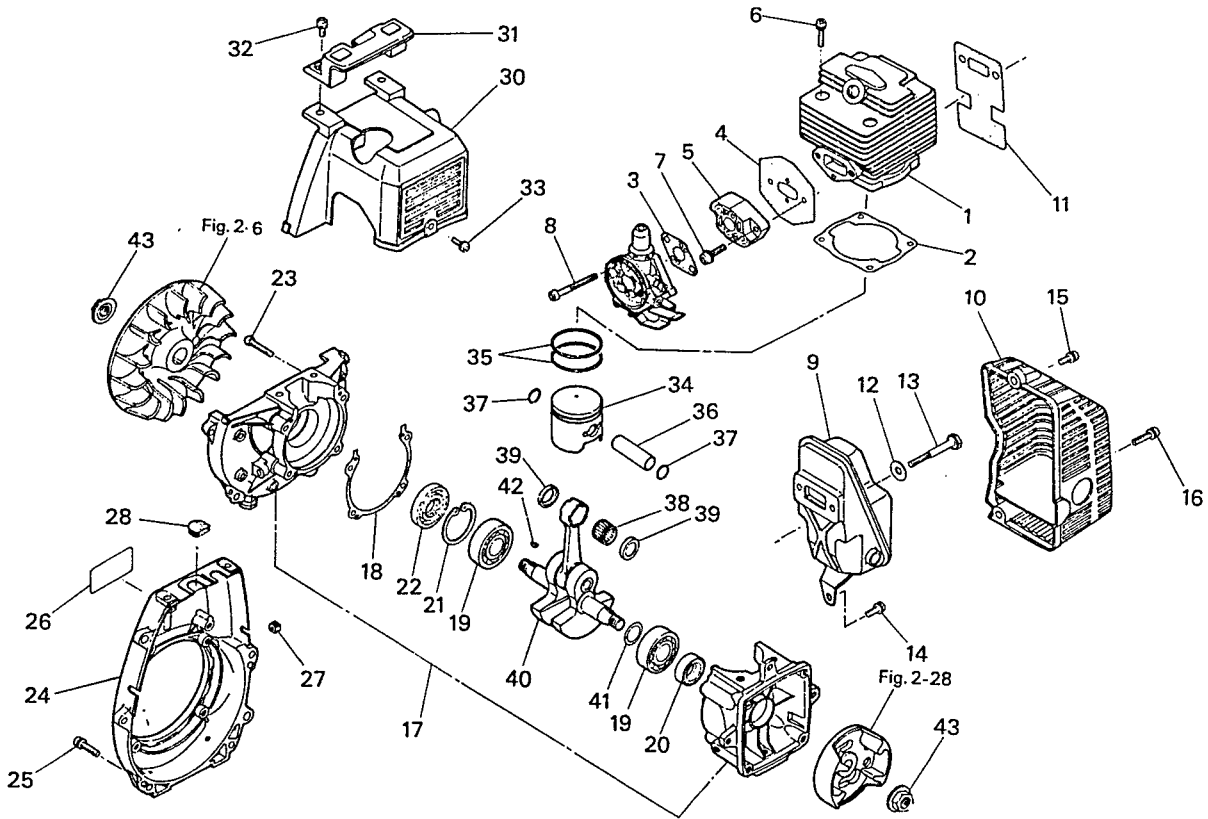
**KOMATSU
ZENOAH**

PARTS LIST

BRUSH CUTTER

BC340DW

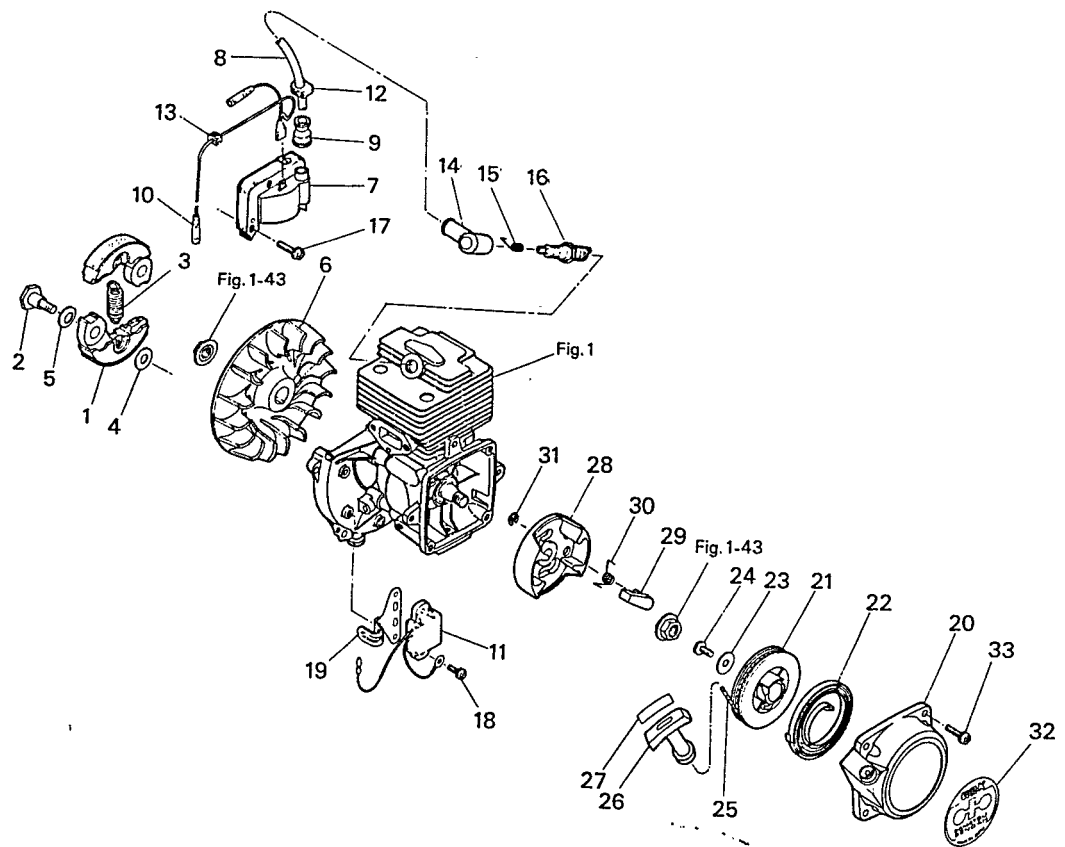
Fig. 1 ENGINE MAIN BODY



Q'ty	Parts Number	Description	Rank	Remarks	Key No.	Parts Number	Description	Q'ty	Rank	Remarks
1	1650-12110	CYLINDER	1	•• K-1	1-30	1670-32110	COVER, cylinder	1	•	
1	1650-13120	GASKET, cylinder	1	••• t0.5 K-1, K-2	-31	1670-33110	GUARD, head	1	•	
1	1600-13130	GASKET, carburetor	1	••• t0.5 K-2	-32	1400-75510	SCREW	2	•	MS × 20 l
1	1600-13150	GASKET, insulator	1	••• t0.5 K-2	-33	1400-15510	SCREW	1	•	MS × 12 l
1	1600-13160	INSULATOR	1	•• K-2	-34	1650-41111	PISTON	1	•••	K-1
4	3310-12280	BOLT	4	• M5 × 20 l K-1	-35	1650-41210	RING, piston	2	•••	K-1
2	1400-75510	SCREW	2	• M5 × 20 l	-36	1650-41310	PIN, piston	1	••	K-1
2	0260-00545	SCREW	2	• M5 × 45 l	-37	3310-41320	RING, snap	2	•••	K-1
1	1670-15110	MUFFLER	1	••	-38	3310-41410	BEARING	1	••	K-1
1	1670-15210	COVER, muffler	1	••	-39	1650-41510	WASHER, thrust	2	••	K-1
1	1670-13140	GASKET, muffler	1	•• t0.6 K-2	-40	1650-42000	CRANKSHAFT COMP	1	•	K-1
2	1140-51230	WASHER	2	•	-41	1140-43250	SHIM	0-1	•	K-1
2	01010-50655	BOLT	2	• M6 × 55 □ 0212-50655	-42	1000-43240	KEY	1	•••	
1	1400-15510	SCREW	1	• M5 × 12	-43	1650-43230	NUT	2	••	
1	1400-75510	SCREW	1	• M5 × 20						
1	0260-30530	SCREW	1	• M5 × 30						
1	1650-21101	CRANKCASE COMP	1	• K-1						
1	1650-21140	GASKET, crankcase	1	••• K-1, K-2						
2	06030-06201	BEARING	2	• K-1						
1	1100-21210	SEAL, oil	1	••• K-1						
1	04065-03212	RING, snap	1	• K-1						
1	1650-21220	SEAL, oil	1	••• K-1						
4	0260-00530	SCREW	4	• M5 × 30 l K-1						
1	1650-31111	COVER, fan	1	•						
4	1400-75510	SCREW	4	• M5 × 20 l						
1	1660-31120	LABEL	1	•						

Fig. 1 ENGINE MAIN BODY

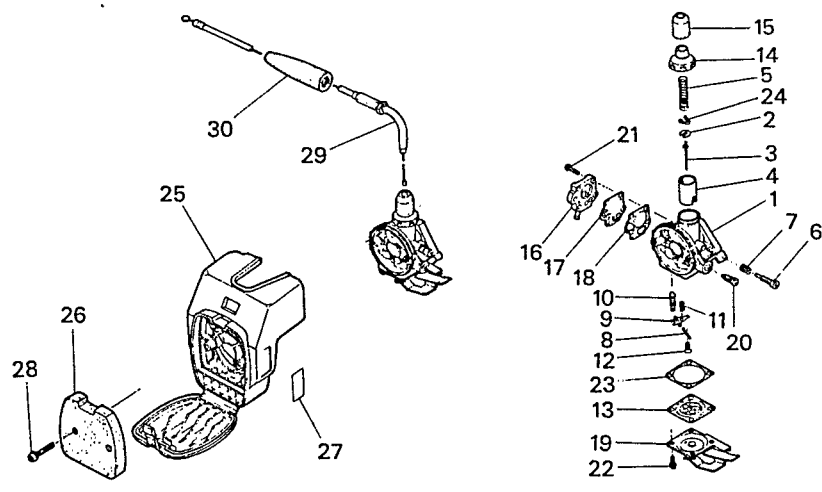
Fig. 2 CLUTCH, IGNITION SYSTEM, STARTER



Key No.	Parts Number	Description	Q'ty	Rank	Remarks	Key No.	Parts Number	Description	Q'ty	Rank	Remarks
2- 1	1400-51110	SHOE	2	•••			1600-75001	STARTER ASSY	1	••	
- 2	1200-51211	SCREW	2	•••			1600-75101	• RECOIL ASSY	1	••	
- 3	1400-51220	SPRING, clutch	1	•••		2-20	1600-75111	•• CASE, recoil	1	•	
- 4	1200-51230	WASHER	2	••		-21	1600-75120	•• REEL	1	•	
- 5	1200-51240	WASHER	2	••		-22	1600-75130	•• SPRING, spiral	1	•••	
	1671-71001	MAGNETO ASSY	1	•		-23	1600-75140	•• WASHER	1	••	
- 6	1650-71111	• ROTOR	1	•		-24	1600-75150	•• SCREW	1	••	
	1671-71200	• COIL ASSY	1	••		-25	1600-75160	•• ROPE	1	•••	
- 7	☆	•• COIL	1		☆ 1671-71200	-26	1140-75320	•• KNOB	1	•	
- 8	1670-71220	•• CORD, hightension	1	••		-27	1600-75180	•• TAPE	1	••	
- 9	1400-71230	•• CAP, cord	1	••			1600-75201	• PULLEY ASSY	1	•	
-10	1660-71240	•• CORD	1	••		-28	1600-75211	•• PULLEY	1	•	
-11	1400-71310	• UNIT	1	••		-29	1600-75220	•• RATCHET	1	•••	
-12	3320-72211	GROMMET, hightension	1	•		-30	1600-75230	•• SPRING, return	1	•••	
-13	1100-72120	GROMMET	1	•		-31	1034-72180	•• E-RING	1	•••	
-14	1400-72111	CAP, plug	1	•••		-32	1654-75410	LABEL	1	•	
-15	1400-72121	SPRING, plug cap	1	•••		-33	1400-75510	SCREW	4	•	M5 × 20 l
-16	1216-73110	SPARK PLUG	1	•••	CHAMPION RCJ-8Y						
-17	1400-75510	SCREW	3	•	M5 × 20 l						
-18	0260-30516	SCREW	2	•	M5 × 16 l						
-19	1400-72310	CLAMP	1	•							

Fig. 2 CLUTCH, IGNITION SYSTEM, STARTER

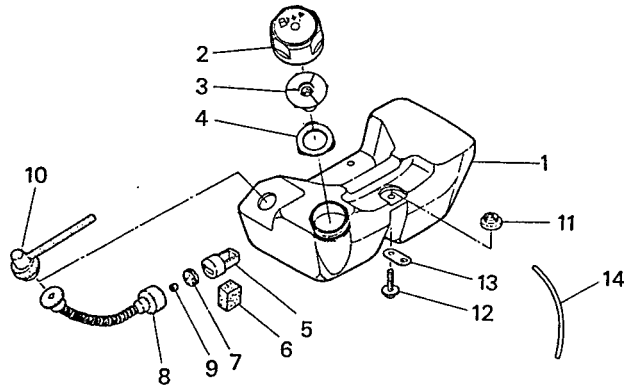
Fig. 3 CARBURETOR, AIR CLEANER, THROTTLE CABLE



Key No.	Parts Number	Description	Q'ty	Rank	Remarks	Key No.	Parts Number	Description	Q'ty	Rank	Remarks
	1670-81000	CARBURETOR ASSY	1	••			1671-82000	CLEANER ASSY	1	•	
3- 1	☆	• BODY ASSY	1	••	☆1670-81000	3- 25	1600-82112	• CLEANER	1	•	
- 2	1600-81120	• RETAINER, spring	1	••		- 26	1600-82120	• ELEMENT	1	•••	
- 3	1670-81130	• NEEDLE COMP, jet	1	•••		- 27	1133-82060	• LABEL	1	•	
- 4	1670-81140	• VALVE, throttle	1	•		- 28	0260-30422	SCREW	2	•	M4 x 22 l
- 5	1188-81150	• SPRING, throttle	1	•			1600-83000	CABLE ASSY	1	•	
- 6	1188-81160	• SCREW, adjust	1	•		- 29	1600-83100	• CABLE COMP	1	•••	
- 7	1188-81170	• SPRING, adjust screw	1	•		- 30	1600-83210	• PROTECTOR	1	•	
- 8	1188-81180	• PIN, float	1	•••							
- 9	1188-81190	• ARM, float	1	•••							
- 10	1188-81210	• VALVE, needle	1	•••							
- 11	1188-81220	• SPRING, inlet valve	1	•••							
- 12	1188-81230	• SCREW, float pin set	1	•							
- 13	1600-81240	• DIAPHRAGM ASSY	1	•••							
	1188-81300	• CAP COMP	1	•							
- 14	1188-81250	• CAP	1	•							
- 15	1188-81330	• SEAL, air	1	•••							
- 15	1600-81260	• COVER ASSY, pump	1	•							
- 17	1670-81270	• DIAPHRAGM, pump	1	•••							
- 18	1188-81280	• GASKET, pump cover	1	•••							
- 19	1600-81290	• COVER ASSY	1	•							
- 20	1600-81310	• NEEDLE COMP, main adjust	1	••							
- 21	0260-10312	• SCREW	4	•							
- 22	0260-10308	• SCREW	4	•							
- 23	1600-81320	• GASKET	1	•••							
- 24	1600-81410	• CLIP, needle	1	••							

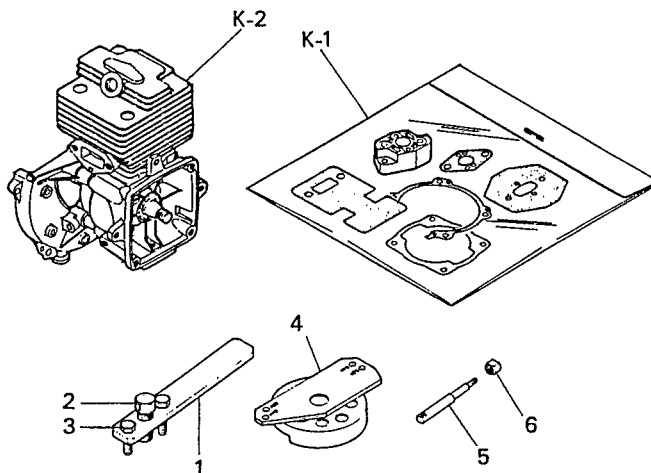
Fig. 3 CARBURETOR, AIR CLEANER, THROTTLE CABLE

Fig. 4 FUEL TANK



Qty No.	Parts Number	Description	Q'ty	Rank	Remarks	Key No.	Parts Number	Description	Q'ty	Rank	Remarks
	1671-85001	TANK ASSY	1	•							
4- 1	☆	• TANK	1		☆1671-85001						
	1751-85201	• CAP ASSY	1	•••							
- 2	☆	•• CAP	1		☆1751-85201						
	1600-85301	•• VALVE COMP	1	••							
- 3	1600-85310	••• VALVE	1	••••							
- 4	1600-85320	••• PACKING	1	••••							
	1600-85401	• PIPE COMP	1	••							
	1100-85300	•• FILTER	1	••							
- 5	1100-85310	••• WEIGHT	1	••							
- 6	1100-85320	••• FILTER (A)	1	••••							
- 7	1100-85331	••• FILTER (B)	1	••••							
- 8	1140-85410	•• PIPE	1	••							
- 9	1139-85510	•• VALVE	1	••••							
-10	1600-85611	•• PUMP	1	••							
-11	1600-86110	WASHER	3	•							
-12	1600-86120	SCREW	3	•	M5 × 22 t						
-13	1600-86130	CLAMP	1	•							
-14	1101-86180	PIPE	1	•							

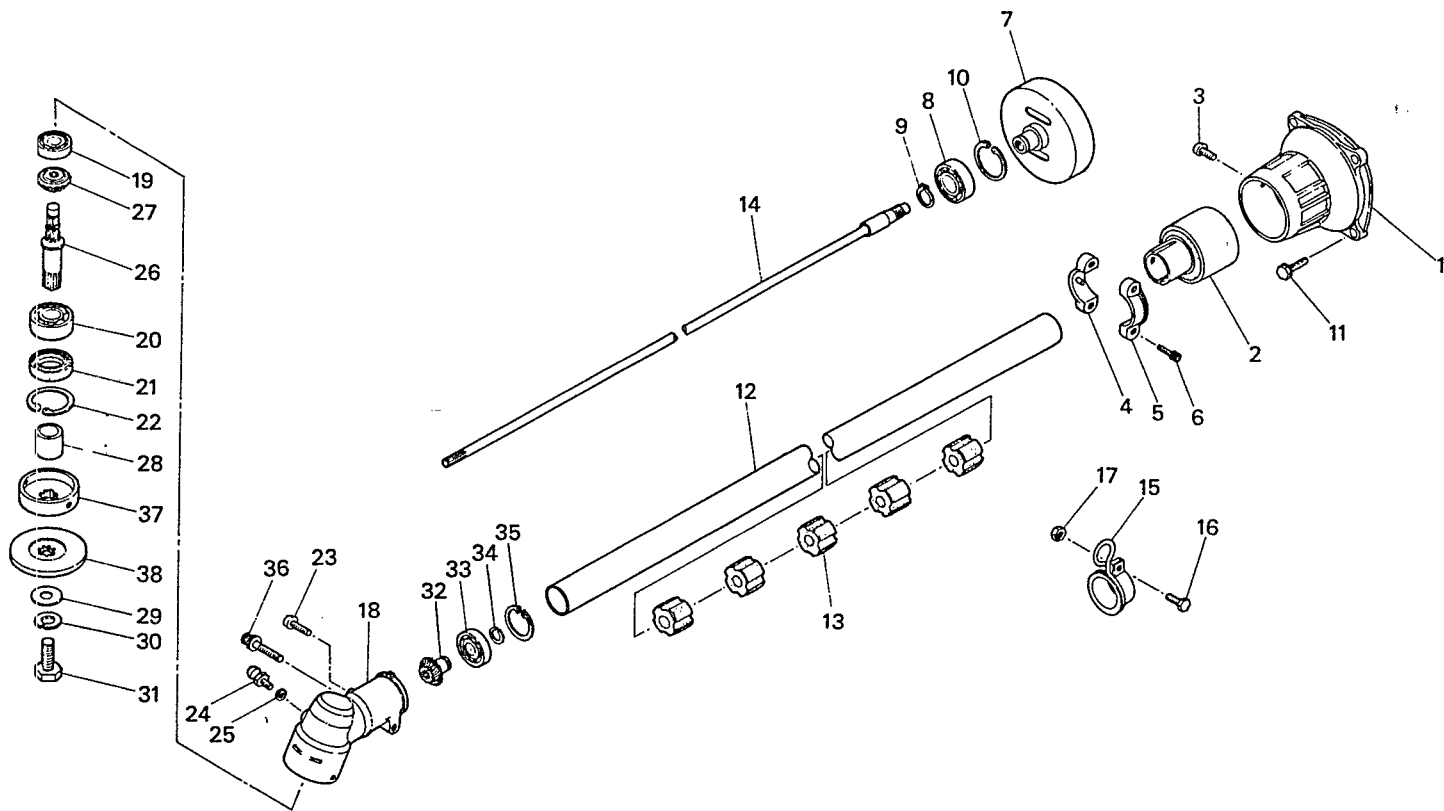
Fig. 5 SPECIAL TOOLS, REPAIR KIT PARTS



Q'ty	Parts Number	Description	Q'ty	Rank	Remarks	Key No.	Parts Number	Description	Q'ty	Rank	Remarks
	1075-96100	PULLER ASSY	1		OP	5-K-1	1660-05010	SHORT BLOCK	1		OP
- 1	☆	• PULLER	1		OP ☆1075-96100		1650-12110	• CYLINDER	1		
- 2	1075-96120	• BOLT	1		OP		1650-13120	• GASKET	1		
- 3	1075-96130	• BOLT	2		OP		3310-12280	• BOLT	4		
- 4	1400-96210	SET BLOCK	1		OP		1650-21101	• CRANK CASE COMP	1		
	1650-96300	ROD ASSY	1		OP		1650-21140	• GASKET	1		
- 5	1650-96310	• ROD	1		OP	6030-06201	• BEARING G	2			
- 6	1650-96320	• NUT	1		OP	1100-21210	• SEAL	1			
							1650-21220	• SEAL	1		
							4065-03212	• RING	1		
							0260-00530	• SCREW	4		
							1650-41111	• PISTON	1		
							1650-41210	• RING	2		
							1650-41310	• PIN	1		
							3310-41320	• RING	2		
							3310-41410	• BEARING	1		
							1650-41510	• WASHER	2		
							1650-42000	• CRANKSHAFT COMP	1		
							1140-43250	• SHIM	0-1		
						5-K-2	1670-06010	GASKET KIT	1		OP
							1650-13120	• GASKET	1		
							1600-13130	• GASKET	1		
							1670-13140	• GASKET	1		
							1600-13150	• GASKET	1		
							1600-13160	• INSULATOR	1		
							1650-21140	• GASKET	1		

Fig. 5 SPECIAL TOOLS, REPAIR KIT PARTS

Fig. 6 DRIVE SHAFT MAIN BODY



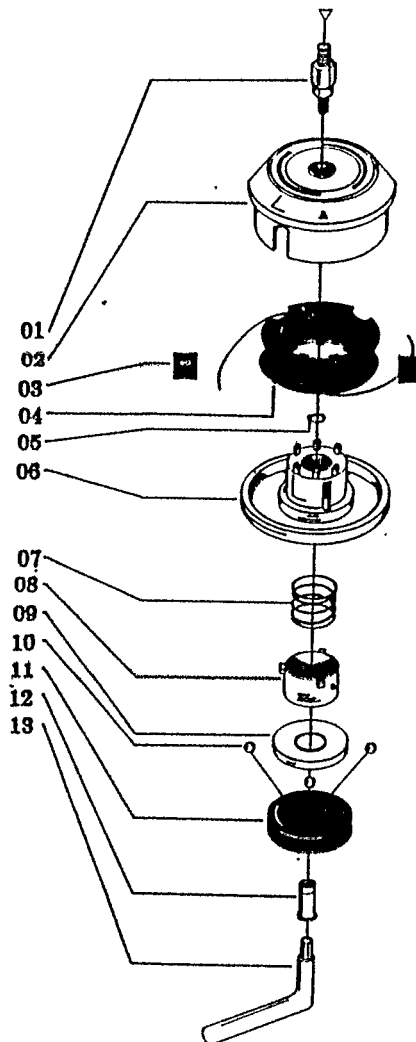
Key No.	Parts Number	Description	Q'ty	Rank	Remarks	Key No.	Parts Number	Description	Q'ty	Rank	Remarks
6-1	3531-11100	HOUSING COMP	1	•		6-26	3541-13210	• SHAFT	1	••	
- 2	☆	• HOUSING	1	•	☆3531-11100	-27	3180-13220	• GEAR, bevel	1	••	
- 3	☆	• JOINT	1	•	☆3531-11100	-28	3541-13230	• COLLAR	1	•••	
- 4	0260-00610	• SCREW	1	•		-29	3541-13270	• WASHER	1	•••	
- 5	3531-11130	CLAMP (A)	1	•		-30	01643-30823	• WASHER	1	•••	
- 6	3531-11140	CLAMP (B)	1	•		-31	3180-13262	• BOLT	1	•••	
- 7	3541-11310	DRUM M/Gewind	1	•	3530-11310	-32	3530-13310	• PINION	1	••	
- 8	06004-06202	BEARING	1	••	M/Not.	-33	06001-06000	• BEARING	1	••	
- 9	04064-01510	RING, snap	1	••		-34	3180-13330	• RING, snap	1	••	
- 10	04065-03515	RING, snap	1	••		-35	3180-13340	• RING, snap	1	••	
- 11	3540-11510	BOLT	4	•		-36	3540-13260	• BOLT	1	•	
- 12	3537-12100	PIPE COMP	1	••		-37	3541-13240	HOLDER (A)	1	••	
- 13	☆	• PIPE	1	•	☆3537-12100	-38	3541-13251	HOLDER (B)	1	••	
- 14	3180-11320	• BUSHING	5	•••			3520-13280	Cover			
- 15	3531-12210	SHAFT M/Gewind	1	••	3530-12211						
- 16	3253-16102	HOOK	1	•	M/Not.						
- 17	0224-00510	BOLT	1	•							
- 18	0280-10504	NUT	1	•							
- 19	3535-13000	GEARCASE ASSY	1	•							
- 20	3541-13110	• GEARCASE	1	•							
- 21	06000-06000	• BEARING	1	••							
- 22	06000-06201	• BEARING	1	••							
- 23	3180-13141	• SEAL, oil	1	•••							
- 24	04065-03212	• RING, snap	1	••							
- 25	01252-30510	• BOLT	1	•							

Fig. 6 DRIVE SHAFT MAIN BODY

Reservedelsliste for Feed-Matic snørehoved

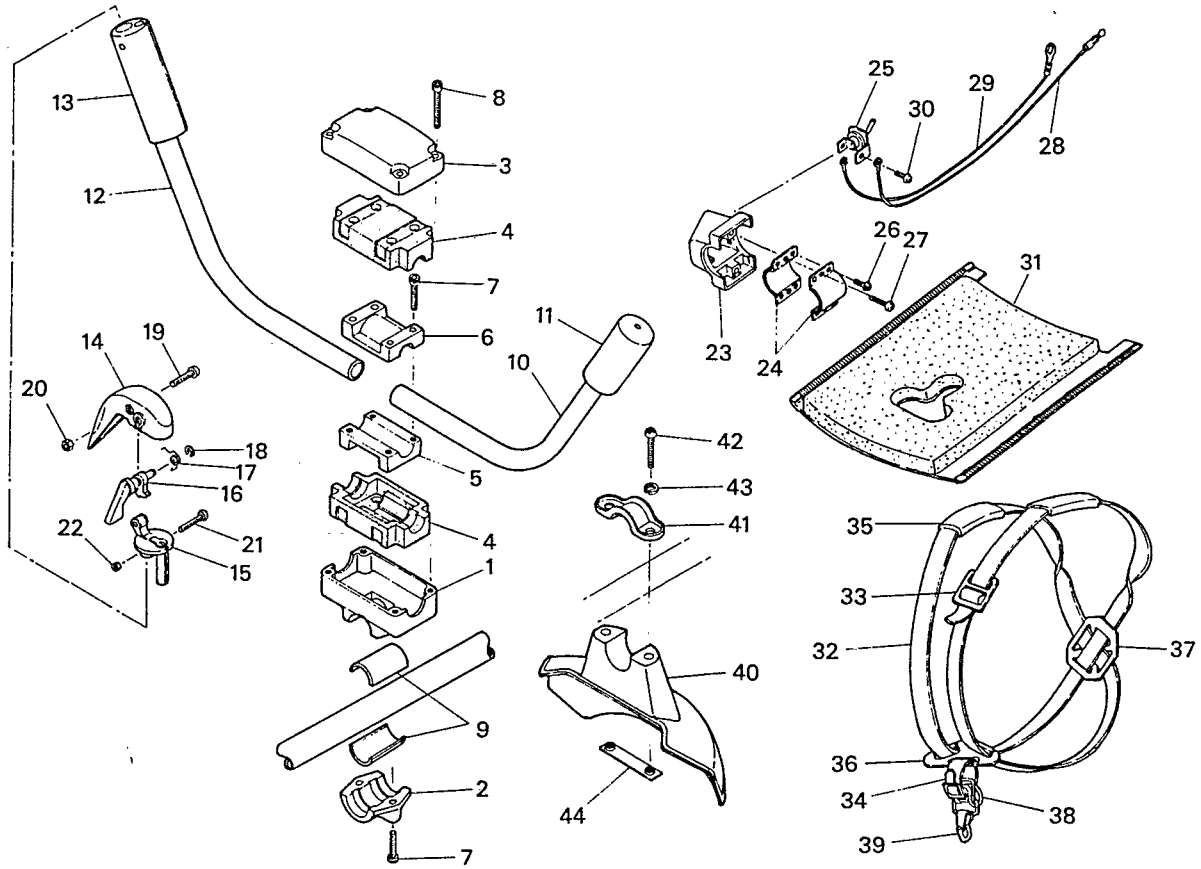
for 'TEXAS' buskryddere

1992/1



Pos.nr.	Best.nr.	Tekst
01	10-101007	Adapter for BC 220
01a	10-101008	Adapter for 340 M
01b	10-101010	Adapter for 431 M
02	10-101061	Spolehus
03	10-106003	Snørestyr
04	10-101030	Spole
05	10-103025	Låsering
06	10-101053	Bund for spolehus
06a	10-201003	Komplet bund pos. 5-12
07	10-107006	Fjeder
08	10-101069	Fjederholder
09	10-101070	Kugleskål
10	10-102073	Stålkugle
11	10-101071	Kugleholder
12	10-101056	Bolt
13	10-109006	Nøgle
14	22007100	Snørehoved for BC 220 7 MM
15	34008125	Snørehoved for 340 M 8 MM
16	43110125	Snørehoved for 431 M 10 MM

Fig. 7 HANDLE, HARNESS, GUARD, SWITCH



Key No.	Parts Number	Description	Q'ty	Rank	Remarks	Key No.	Parts Number	Description	Q'ty	Rank	Remarks
	3530-14100	BRACKET ASSY	1	•			3555-18000	SWITCH ASSY	1	•••	
7- 1	3540-14110	• BRACKET	1	•		7- 23	3294-18110	• CASE	1	•••	
- 2	3540-14120	• CAP LOWER	1	•		- 24	3294-18120	• CLAMP	2	•••	
- 3	3540-14130	• CAP UPPER	1	•		- 25	3238-14171	• SWITCH	1	•••	
- 4	3540-14140	• ABSORBER	2	•••		- 26	0260-00405	• SCREW	4	•••	
- 5	3540-14150	• CLAMP (A)	1	•		- 27	0277-10410	• SCREW	2	•••	
- 6	3540-14160	• CLAMP (B)	1	•		- 28	3555-18130	• CORD (A)	1	•••	
- 7	01252-30525	• BOLT	6	•		- 29	3555-18140	• CORD (B)	1	•••	
- 8	01252-30530	• BOLT	4	•		- 30	0260-00405	• SCREW	2	•••	
- 9	3530-14170	• SPACER	2	•		- 31	3257-17110	PROTECTOR	1	••	
	3537-14200	HANDLE (L) COMP	1	•			3541-17200	HARNESS ASSY	1	•	
- 10	☆	• HANDLE	1		☆3537-14200	- 32	3541-17200-01	• BAND	1	•	
- 11	☆	• GRIP 3540-14220	1		☆3537-14200	- 33	☆	• BUCKLE	1		☆3541-17200-01
	3540-14500	HANDLE (R) ASSY	1	•		- 34	3541-17200-03	• BAND	1		
	3540-14300	• HANDLE (R) COMP	1	•		- 35	3541-17200-04	• PROTECTOR	2	•	
- 12	☆	• HANDLE (R)	1		☆3540-14300	- 36	3540-17220	• HANGER	1	•	
- 13	☆	• GRIP	1		☆3540-14300	- 37	3260-17200-05	• RING	1	•	
	3540-14400	• LEVER ASSY	1	•		- 38	3146-17251	• RING	1	•••	
- 14	3540-14410	• LEVER	1	•		- 39	3144-17240	• HOOK	1	•	
- 15	3540-14420	• BRACKET	1	•			3541-24000	GUARD ASSY *	1	•	
- 16	3540-14430	• LEVER	1	•		- 40	3541-24110	• GUARD	1	•	
- 17	3540-14441	• SPRING	1	•		- 41	3541-24121	• CLAMP	1	•	
- 18	0308-00040	• RING, snap	1	•		- 42	3540-24130	• BOLT	2	•	
- 19	0260-00520	• SCREW	1	•		- 43	0290-20615	• WASHER	2	•	
- 20	0282-10503	• NUT	1	•		- 44	3256-24130	• NUT	1	•	
- 21	0260-00425	• SCREW	1	•							

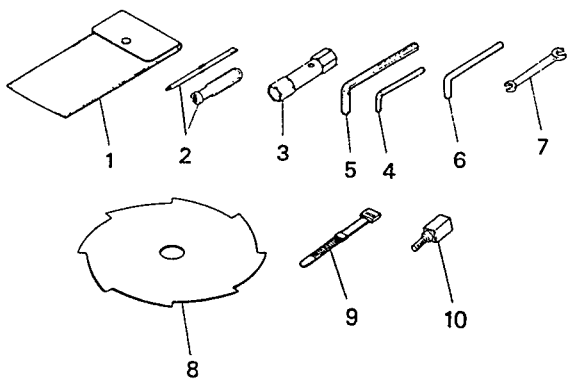
* 3253-24000 ISO sham Kpl.

3294-24120 Beolag.

Fig. 7 HANDLE, HARNESS, GUARD, SWITCH

BC34

Fig. 8 STANDARD ACCESSORIES



Key No.	Parts Number	Description	Q'ty	Rank	Remarks	Key No.	Parts Number	Description	Q'ty	Rank	Remarks
	3541-91000	TOOL SET	1	•							
8- 1	1030-91112	• BAG	1	•							
- 2	1030-91340	• DRIVER	1	•							
- 3	3239-91310	• SOCKET	1	•							
- 4	09007-00425	• WRENCH	1	•							
- 5	09007-00528	• WRENCH	1	•							
- 6	3540-91110	• BAR	1	•							
- 7	3540-91120	• SPANNER	1	•							
- 8	3144-92122	SAW BLADE, eddy	1	•••	∅255						
- 9	3540-93120	BAND	1	•							
- 10	3536-93130	SHAFT	1	•							
	3274-99001	Grossaderhoved									

FIG. 8 STANDARD ACCESSORIES