



PARTS LIST

BC2601DLM-1
BC2601DWM-1

BRUSHCUTTERS

BC2601DLM-1
BC2601DWM-1

APPLICABLE SERIAL NUMBERS

DRIVE UNIT	700101 and up
ENGINE UNIT	600101 and up

Fig.1 CUTTER GROUP

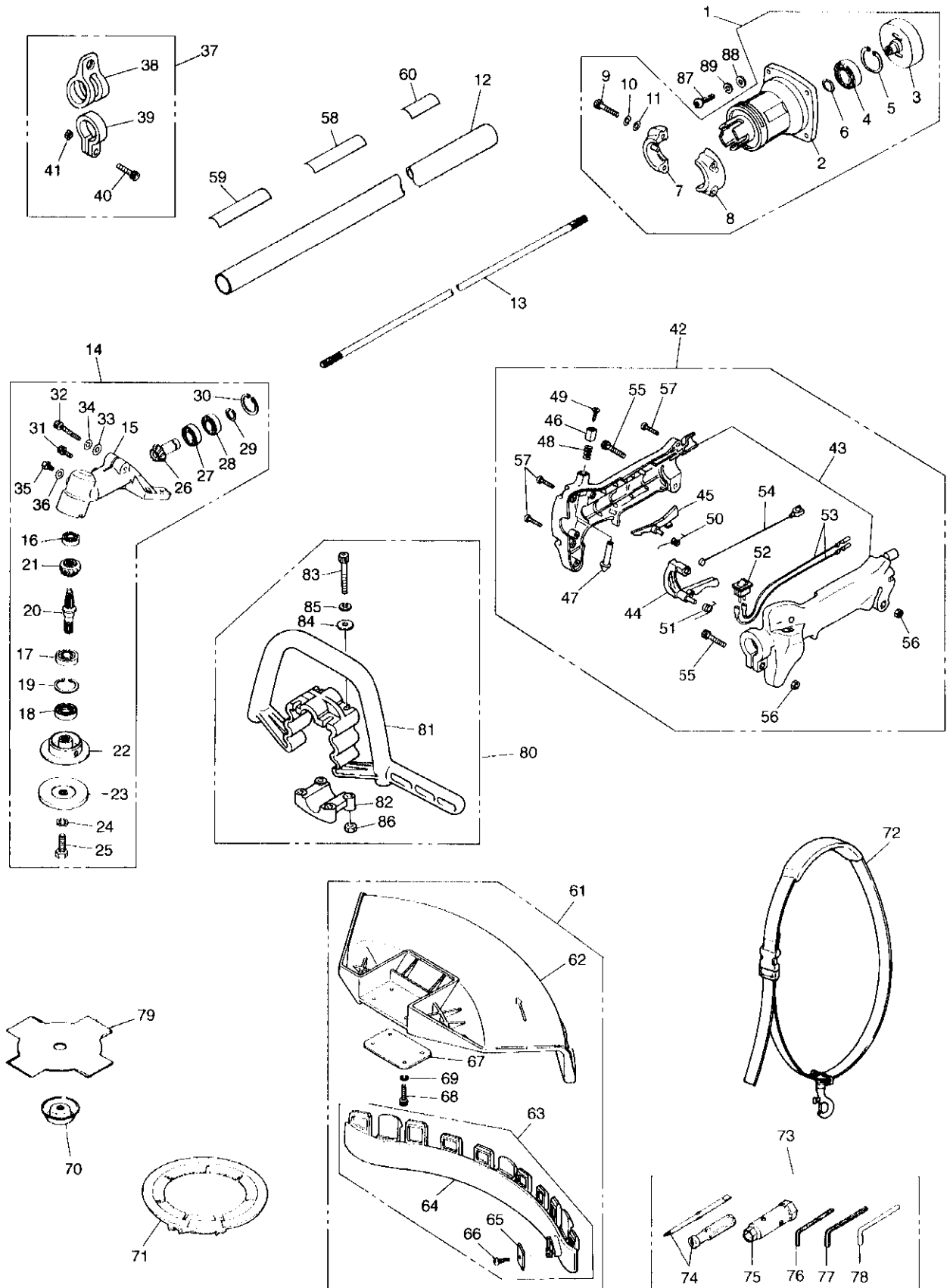


Fig.1 CUTTER GROUP

Key#	PART NUMBER	DESCRIPTION	Q'TY /UNIT	NOTE	Key#	PART NUMBER	DESCRIPTION	Q'TY /UNIT	NOTE
1	D10833	HOUSING ASSY	1		65	D10591	•• BLADE	1	
2	D10920	• HOUSING COMP	1		66	D10587	•• SCREW	1	
3	D10747	• DRUM	1		67	D10656	• PLATE	1	
4	D10346	• BEARING	1		68	5223	• BOLT	4	M5x16
5	D10348	• RING	1		69	1195	• WASHER	4	
6	D10269	• RING	1		70	D10520	COVER(BOLT)	1	
7	D10067	• CLAMP	1		71	D10540	COVER(BLADE)	1	
8	D10051	• CLAMP	1		72	D10081	STRAP ASSY	1	
9	1172	• BOLT	2		73	D10596	TOOL KIT	1	
10	1195	• WASHER	2		74	D10332	• DRIVER	1	
11	1185	• WASHER	2		75	D10331	• SOCKET	1	
12	D10616	PIPE COMP	1		76	D10334	• WRENCH	1	
13	D10107	SHAFT	1		77	1316	• WRENCH	1	
14	D10561	GEARCASE ASSY	1		78	D10709	• BAR	1	
15	D10600	• GEARCASE	1		79	6298-14243	SAW	1	
16	D10599	• BEARING	1		80	D10571	HANDLE ASSY	1	
17	D10270	• BEARING	1		81	D10622	• HANDLE	1	
18	D10550	• SEAL	1		82	D10607	• CLAMP	1	
19	D10272	• RING	1		83	D10667	• SCREW	4	M5x35
20	D10543	• SHAFT	1		84	1185	• WASHER	4	
21	D10542	• GEAR	1		85	1195	• WASHER	4	
22	6423-13241	• HOLDER(A)	1		86	1205	• NUT	4	
23	6423-13250	• HOLDER(B)	1		87	1174	BOLT	4	M6x20
24	D10592	• WASHER	1		88	1186	WASHER	4	
25	D10594	• BOLT	1		89	D10217	WASHER	4	
26	D10541	• PINION	1						
27	D10580	• BEARING	1						
28	D10347	• BEARING	1						
29	D10593	• RING	1						
30	D10349	• RING	1						
31	D10222	• BOLT	1	M5x10					
32	1173	• BOLT	1						
33	1185	• WASHER	1						
34	1195	• WASHER	1						
35	D10351	• BOLT	1	M6x10					
36	1186	• WASHER	1						
37	D10711	HANGER ASSY	1						
38	D10619	• HANGER	1						
39	D10621	• CLAMP	1						
40	1171	• BOLT	1						
41	1205	• NUT	1						
42	D10752	GRIP ASSY	1						
43	D10633	• BODY	1						
44	D10613	• LEVER	1						
45	D10612	• LEVER	1						
46	D10610	• BUTTON A	1						
47	D10611	• BUTTON B	1						
48	D10584	• SPRING	1						
49	D10802	• SCREW	1						
50	D10583	• SPRING	1						
51	D10579	• SPRING	1						
52	D10716	• SWITCH	1						
53	D10800	• CORD	2						
54	D10585	• CABLE	1						
55	1170	• BOLT	2	M5x20					
56	1205	• NUT	2						
57	D10921	• SCREW	3	L20					
58	D10890	PLATE NAME	1						
59	D10560	PLATE CAUTION	1						
60	—	No. PLATE	1						
61	D10570	GUARD ASSY	1						
62	D10655	• GUARD	1						
63	D10653	• PLATE COMP	1						
64	D10654	•• PLATE	1						

Fig.2 ENGINE GROUP

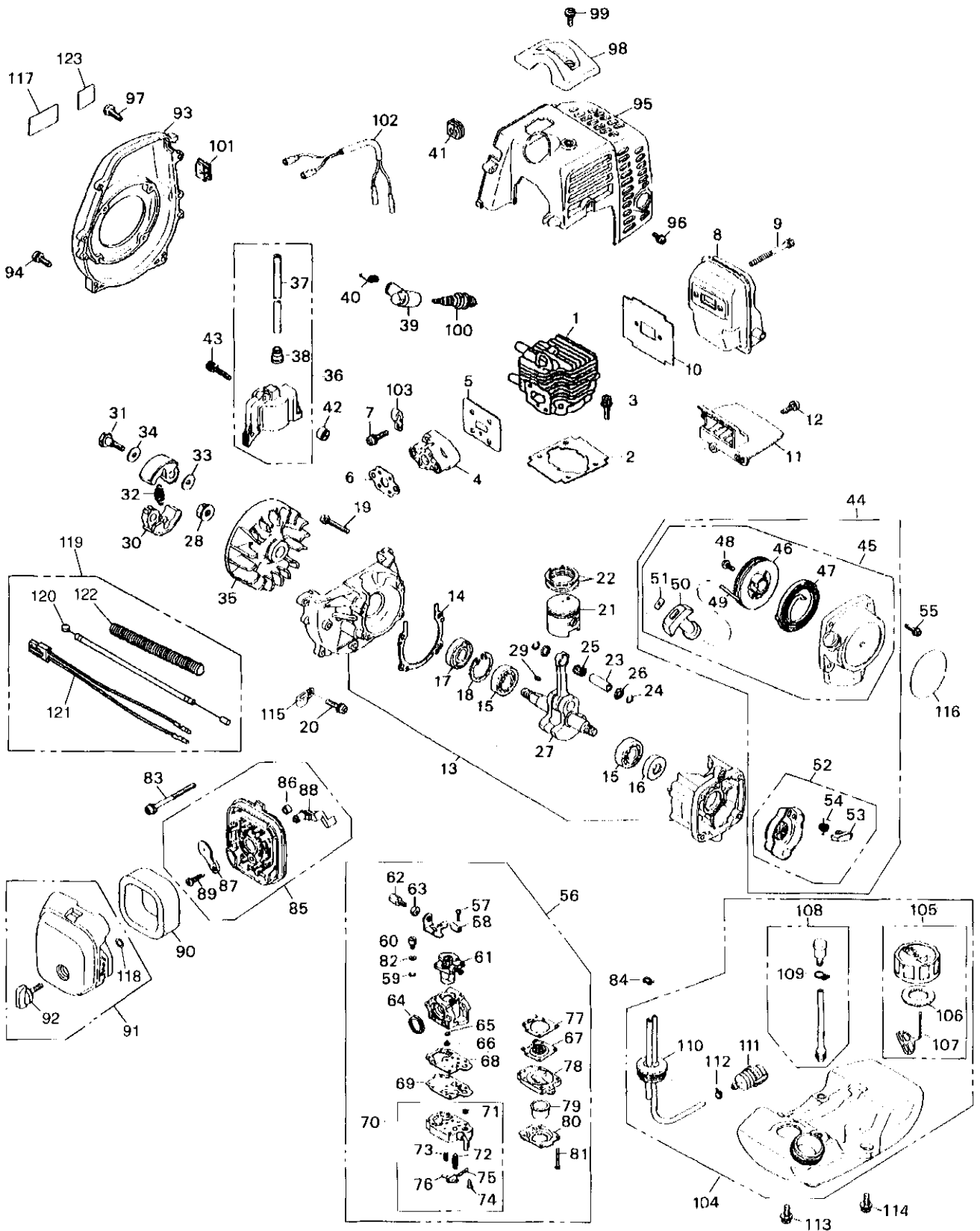


Fig.2 ENGINE GROUP

Key#	PART NUMBER	DESCRIPTION	Q'TY /UNIT	NOTE	Key#	PART NUMBER	DESCRIPTION	Q'TY /UNIT	NOTE
1	5910-12110	CYLINDER	1		65	1751-81240	• O-RING	1	
2	5500-12211	GASKET	1		66	1850-81251	• JET	1	
3	1850-12130	BOLT	2		67	3310-81260	• DIAPHRAGM, metering	1	
4	1920-13162	INSULATOR	1		68	1065-81410	• GASKET, pump	1	
5	5500-13120	GASKET	1		69	1065-81420	• DIAPHRAGM, pump	1	
6	5500-13130	GASKET	1		70	1850-81450	• BODY ASS'Y	1	
7	0263-90520	SCREW	2		71	3306-81380	•• SCREEN	1	
8	5580-15110	MUFFLER	1		72	3356-81310	•• VALVE	1	
9	01252-30550	BOLT	2		73	1850-81270	•• SPRING	1	
10	5500-15210	GASKET	1		74	1850-81220	•• SCREW	1	
11	5500-15220	PLATE	1		75	3310-81250	•• PIN	1	
12	0263-90416	SCREW	1		76	3310-81230	•• LEVER	1	
13	5500-21100	CRANKCASE COMP	1		77	1850-81470	• GASKET	1	
14	5500-21140	GASKET	1		78	1850-81490	• BODY, purge	1	
15	06030-06001	BEARING	2		79	1751-81510	• PUMP, priming	1	
16	2169-21210	SEAL	1		80	1850-81520	• COVER, pump	1	
17	1850-21220	SEAL	1		81	1850-81530	SCREW	4	
18	04065-02812	RING	1		82	5500-81160	• WASHER	1	
19	01252-30530	BOLT	4		83	0263-30555	SCREW	2	
20	0263-90514	SCREW	1		84	1950-86120	CLIP	1	
21	5910-41110	PISTON	1		85	5500-82102	BODY ASS'Y	1	
22	5910-41210	RING	2		86	1970-82190	• SLEEVE	2	
23	1600-41310	PIN	1		87	5500-82131	• PLATE	1	
24	1260-41320	RING	2		88	5500-82140	• LEVER	1	
25	1140-41330	BEARING	1		89	2630-33610	• SCREW	1	
26	1101-41340	WASHER	2		90	5500-82171	ELEMENT	1	
27	5500-42001	CRANKSHAFT COMP	1		91	5600-82201	COVER ASS'Y	1	
28	1650-43230	NUT	1		92	5500-82221	• KNOB	1	
29	1000-43240	KEY	1		93	5501-31111	COVER	1	
30	1140-51111	SHOE	2		94	0263-90520	SCREW	4	
31	1140-51250	SCREW	2		95	5580-32111	COVER	1	
32	1970-51221	SPRING	1		96	1850-32160	SCREW	1	
33	1140-51230	WASHER	2		97	1900-31410	SCREW	2	
34	1970-51241	WASHER	2		98	5500-32210	GUARD	1	
35	5501-71110	ROTOR	1		99	0263-90514	SCREW	1	
36	550171201	COIL ASS'Y	1		100	5933-73110	SPARK PLUG	1	
37	5500-71220	• CORD	1		101	1852-72120	GROMMET	1	
38	2616-71320	• CAP	1		102	5500-73201	CORD COMP	1	
39	1900-72111	CAP	1		103	1140-72231	CLAMP	1	
40	1900-72120	SPRING	1		104	5912-85001	TANK ASS'Y	1	
41	5500-72130	GROMMET	1		105	5504-85201	• CAP ASS'Y	1	
42	1260-71261	SPACER	2		106	5500-85220	•• PACKING	1	
43	3310-72150	BOLT	2		107	3317-57242	•• STOPPER	1	
44	5500-75000	STARTER ASS'Y	1		108	5500-85601	• BREATHER ASS'Y	1	
45	5500-75100	• RECOIL ASS'Y	1		109	1950-86120	•• CLIP	1	
46	1850-75120	•• REEL	1		110	5911-85300	• PIPE COMP	1	
47	1850-75130	•• SPRING	1		111	5500-85400	• FILTER ASS'Y	1	
48	1850-75151	•• SCREW	1		112	1260-85460	• CLIP	1	
49	1850-75160	•• ROPE	1		113	5500-85510	SCREW	2	
50	1140-75320	•• KNOB	1		114	5910-85510	SCREW	1	
51	5500-75170	•• PLATE	1		115	1140-72231	CLAMP	1	
52	1850-75201	• PULLEY ASS'Y	1		116	5912-91120	LABEL, recoil	1	
53	1850-75221	•• RATCHET	1		117	5504-91130	LABEL, cover	1	
54	1850-75230	•• SPRING	1		118	5500-82230	• RING	1	
55	0263-90416	SCREW	4		119	5548-83000	CABLE ASS'Y	1	
56	5912-81000	CARBURETOR ASS'Y	1		120	5548-83100	• CABLE COMP	1	
57	1752-81110	• SCREW	2		121	5548-73200	• CORD COMP	1	
58	5500-81120	• BRACKET	1		122	5548-73310	• TUBE	1	
59	1751-81130	• RING	1		123	2634-31420	LABEL(CE)	1	
60	1881-81140	• SWIVEL	1						
61	5500-81152	• VALVE ASS'Y	1						
62	1918-81170	• SCREW	1						
63	1751-81180	• NUT	1						
64	1881-81130	• RING	1						

Fig.1 CUTTER GROUP

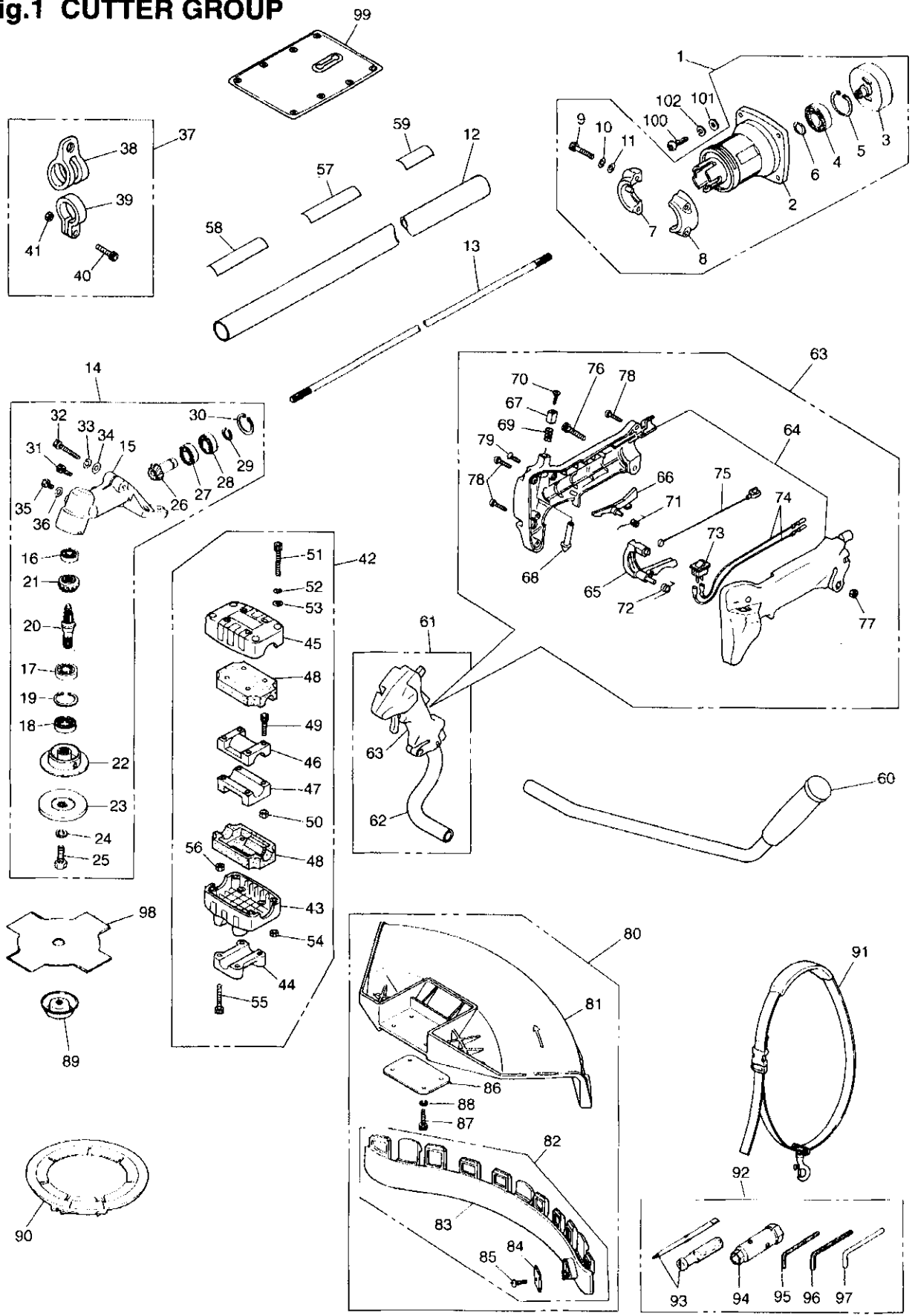


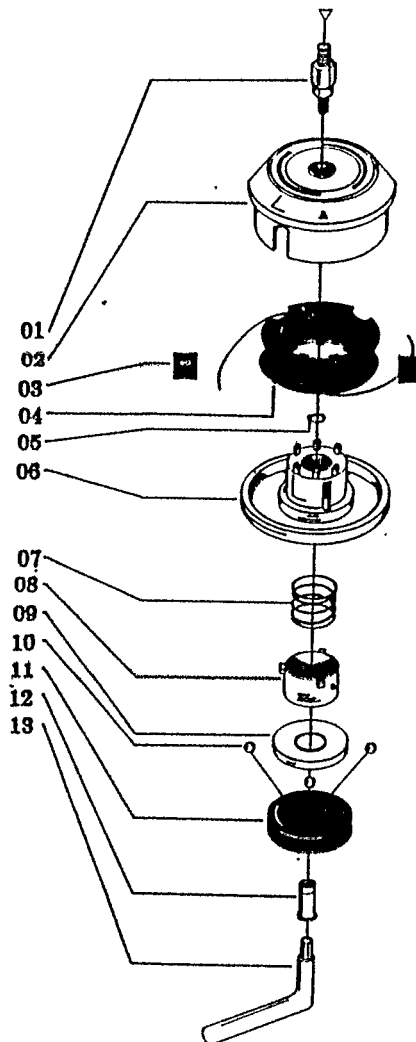
Fig.1 CUTTER GROUP

Key#	PART NUMBER	DESCRIPTION	Q'TY /UNIT	NOTE	Key#	PART NUMBER	DESCRIPTION	Q'TY /UNIT	NOTE
1	D10833	HOUSING ASSY	1		65	D10613	•• LEVER	1	
2	D10920	• HOUSING COMP	1		66	D10612	•• LEVER	1	
3	D10747	• DRUM	1		67	D10610	•• BUTTON A	1	
4	D10346	• BEARING	1		68	D10611	•• BUTTON B	1	
5	D10348	• RING	1		69	D10584	•• SPRING	1	
6	D10269	• RING	1		70	D10802	•• SCREW	1	
7	D10067	• CLAMP	1		71	D10583	•• SPRING	1	
8	D10051	• CLAMP	1		72	D10579	•• SPRING	1	
9	1172	• BOLT	2		73	D10716	•• SWITCH	1	
10	1195	• WASHER	2		74	D10800	•• CORD	2	
11	1185	• WASHER	2		75	D10585	•• CABLE	1	
12	D10616	PIPE COMP	1		76	1170	•• BOLT	1	M5x20
13	D10107	SHAFT	1		77	1205	•• NUT	1	
14	D10561	GEARCASE ASSY	1		78	D10921	•• SCREW	3	L20
15	D10600	• GEARCASE	1		79	D10323	•• SCREW	1	
16	D10599	• BEARING	1		80	D10570	GUARD ASSY	1	
17	D10270	• BEARING	1		81	D10655	• GUARD	1	
18	D10550	• SEAL	1		82	D10653	• PLATE COMP	1	
19	D10272	• RING	1		83	D10654	•• PLATE	1	
20	D10543	• SHAFT	1		84	D10591	•• BLADE	1	
21	D10542	• GEAR	1		85	D10587	•• SCREW	1	
22	6423-13241	• HOLDER(A)	1		86	D10656	• PLATE	1	
23	6423-13250	• HOLDER(B)	1		87	5223	• BOLT	4	M5x16
24	D10592	• WASHER	1		88	1195	• WASHER	4	
25	D10594	• BOLT	1		89	D10520	COVER(BOLT)	1	
26	D10541	• PINION	1		90	D10540	COVER(BLADE)	1	
27	D10580	• BEARING	1		91	D10081	STRAP ASSY	1	
28	D10347	• BEARING	1		92	D10596	TOOL KIT	1	
29	D10593	• RING	1		93	D10332	• DRIVER	1	
30	D10349	• RING	1		94	D10331	• SOCKET	1	
31	D10222	• BOLT	1	M5x10	95	D10334	• WRENCH	1	
32	1173	• BOLT	1		96	1316	• WRENCH	1	
33	1185	• WASHER	1		97	D10709	• BAR	1	
34	1195	• WASHER	1		98	6298-14243	SAW	1	
35	D10351	• BOLT	1	M6x10	99	D10397	PROTECTOR	1	
36	1186	• WASHER	1		100	1174	BOLT	4	M6x20
37	D10711	HANGER ASSY	1		101	1186	WASHER	4	
38	D10619	• HANGER	1		102	D10217	WASHER	4	
39	D10621	• CLAMP	1						
40	1171	• BOLT	1						
41	1205	• NUT	1						
42	D10575	BRACKET ASSY	1						
43	D10050	• BRACKET	1						
44	D10551	• CAP-L	1						
45	D10077	• CAP-U	1						
46	D10054	• CLAMP	1						
47	D10055	• CLAMP	1						
48	D10078	• ABSORBER	2						
49	D10721	• BOLT	4						
50	1205	• NUT	4						
51	D10588	• BOLT	4						
52	1195	• WASHER	4						
53	1185	• WASHER	4						
54	1205	• NUT	4						
55	1173	• BOLT	4						
56	1205	• NUT	4						
57	D10891	PLATE NAME	1						
58	D10560	PLATE CAUTION	1						
59	—	No. PLATE	1						
60	D10735	HANDLE-L COMP	1						
61	D10799	HANDLE-R COMP	1						
62	D10539	• HANDLE-R	1						
63	D10751	• GRIP ASSY	1						
64	D10606	•• BODY	1						

Reservedelsliste for Feed-Matic snørehoved

for 'TEXAS' buskryddere

1992/1



Pos.nr.	Best.nr.	Tekst
01	10-101007	Adapter for BC 220
01a	10-101008	Adapter for 340 M
01b	10-101010	Adapter for 431 M
02	10-101061	Spolehus
03	10-106003	Snørestyr
04	10-101030	Spole
05	10-103025	Låsering
06	10-101053	Bund for spolehus
06a	10-201003	Komplet bund pos. 5-12
07	10-107006	Fjeder
08	10-101069	Fjederholder
09	10-101070	Kugleskål
10	10-102073	Stålkugle
11	10-101071	Kugleholder
12	10-101056	Bolt
13	10-109006	Nøgle
14	22007100	Snørehoved for BC 220 7 MM
15	34008125	Snørehoved for 340 M 8 MM
16	43110125	Snørehoved for 431 M 10 MM

Fig.2 ENGINE GROUP

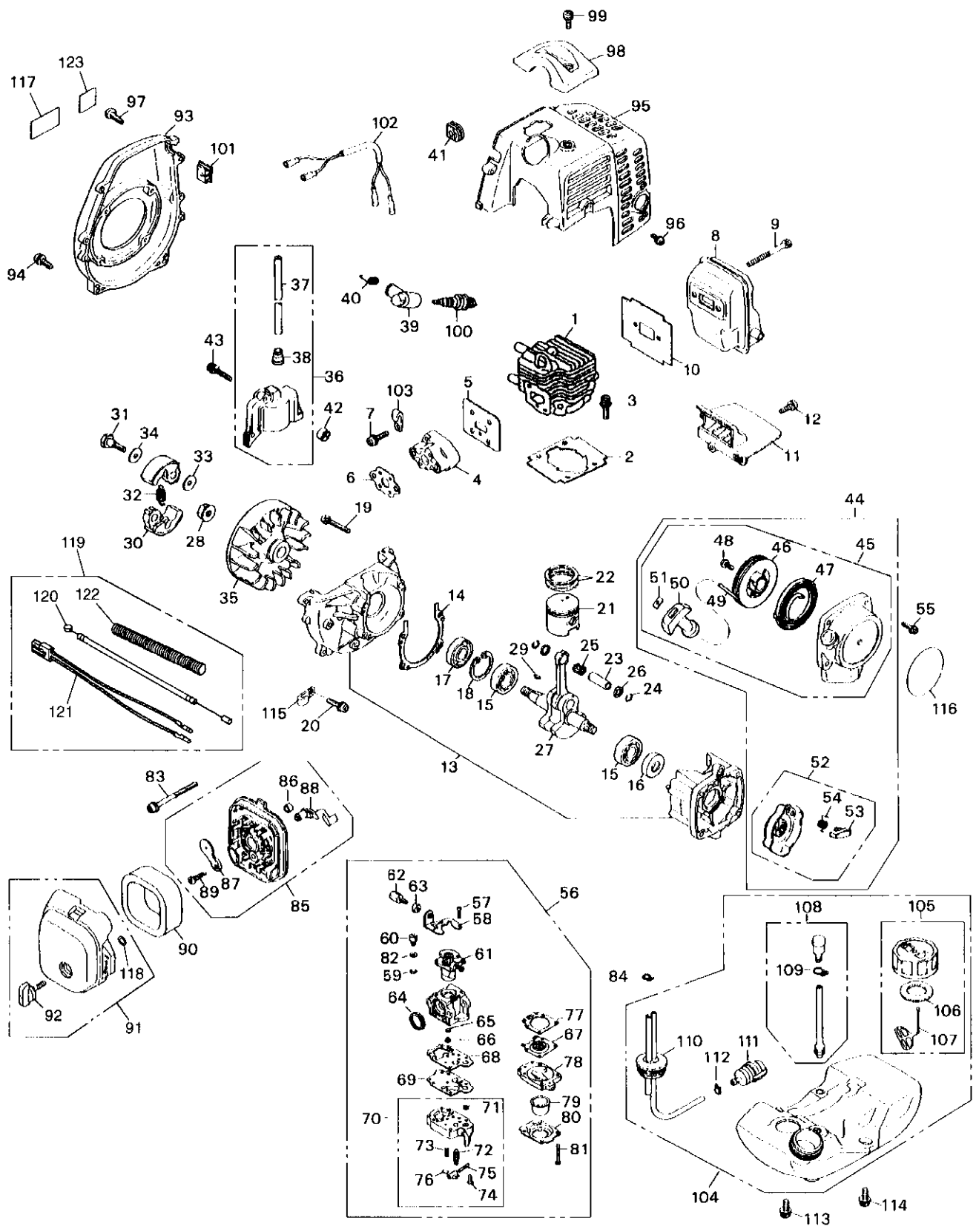


Fig.2 ENGINE GROUP

Key#	PART NUMBER	DESCRIPTION	Q'TY /UNIT	NOTE	Key#	PART NUMBER	DESCRIPTION	Q'TY /UNIT	NOTE
1	5910-12110	CYLINDER	1		65	1751-81240	• O-RING	1	
2	5500-12211	GASKET	1		66	1850-81251	• JET	1	
3	1850-12130	BOLT	2		67	3310-81260	• DIAPHRAGM, metering	1	
4	1920-13162	INSULATOR	1		68	1065-81410	• GASKET, pump	1	
5	5500-13120	GASKET	1		69	1065-81420	• DIAPHRAGM, pump	1	
6	5500-13130	GASKET	1		70	1850-81450	• BODY ASS'Y	1	
7	0263-90520	SCREW	2		71	3306-81380	•• SCREEN	1	
8	5580-15110	MUFFLER	1		72	3356-81310	•• VALVE	1	
9	01252-30550	BOLT	2		73	1850-81270	•• SPRING	1	
10	5500-15210	GASKET	1		74	1850-81220	•• SCREW	1	
11	5500-15220	PLATE	1		75	3310-81250	•• PIN	1	
12	0263-90416	SCREW	1		76	3310-81230	•• LEVER	1	
13	5500-21100	CRANKCASE COMP	1		77	1850-81470	• GASKET	1	
14	5500-21140	GASKET	1		78	1850-81490	• BODY, purge	1	
15	06030-06001	BEARING	2		79	1751-81510	• PUMP, priming	1	
16	2169-21210	SEAL	1		80	1850-81520	• COVER, pump	1	
17	1850-21220	SEAL	1		81	1850-81530	SCREW	4	
18	04065-02812	RING	1		82	5500-81160	• WASHER	1	
19	01252-30530	BOLT	4		83	0263-30555	SCREW	2	
20	0263-90514	SCREW	1		84	1950-86120	CLIP	1	
21	5910-41110	PISTON	1		85	5500-82102	• BODY ASS'Y	1	
22	5910-41210	RING	2		86	1970-82190	• SLEEVE	2	
23	1600-41310	PIN	1		87	5500-82131	• PLATE	1	
24	1260-41320	RING	2		88	5500-82140	• LEVER	1	
25	1140-41330	BEARING	1		89	2630-33610	• SCREW	1	
26	1101-41340	WASHER	2		90	5500-82171	ELEMENT	1	
27	5500-42001	CRANKSHAFT COMP	1		91	5600-82201	COVER ASS'Y	1	
28	1650-43230	NUT	1		92	5500-82221	• KNOB	1	
29	1000-43240	KEY	1		93	5501-31111	COVER	1	
30	1140-51111	SHOE	2		94	0263-90520	SCREW	4	
31	1140-51250	SCREW	2		95	5580-32111	COVER	1	
32	1970-51221	SPRING	1		96	1850-32160	SCREW	1	
33	1140-51230	WASHER	2		97	1900-31410	SCREW	2	
34	1970-51241	WASHER	2		98	5500-32210	GUARD	1	
35	5501-71110	ROTOR	1		99	0263-90514	SCREW	1	
36	5501-71201	COIL ASS'Y	1		100	5933-73110	SPARK PLUG	1	
37	5500-71220	• CORD	1		101	1852-72120	GROMMET	1	
38	2616-71320	• CAP	1		102	5500-73201	CORD COMP	1	
39	1900-72111	CAP	1		103	1140-72231	CLAMP	1	
40	1900-72120	SPRING	1		104	5912-85001	TANK ASS'Y	1	
41	5500-72130	GROMMET	1		105	5504-85201	• CAP ASS'Y	1	
42	1260-71261	SPACER	2		106	5500-85220	•• PACKING	1	
43	3310-72150	BOLT	2		107	3317-57242	•• STOPPER	1	
44	5500-75000	STARTER ASS'Y	1		108	5500-85601	• BREATHER ASS'Y	1	
45	5500-75100	• RECOIL ASS'Y	1		109	1950-86120	•• CLIP	1	
46	1850-75120	•• REEL	1		110	5911-85300	• PIPE COMP	1	
47	1850-75130	•• SPRING	1		111	5500-85400	• FILTER ASS'Y	1	
48	1850-75151	•• SCREW	1		112	1260-85460	• CLIP	1	
49	1850-75160	•• ROPE	1		113	5500-85510	SCREW	2	
50	1140-75320	•• KNOB	1		114	5910-85510	SCREW	1	
51	5500-75170	•• PLATE	1		115	1140-72231	CLAMP	1	
52	1850-75201	• PULLEY ASS'Y	1		116	5912-91120	LABEL, recoil	1	
53	1850-75221	•• RATCHET	1		117	5504-91130	LABEL, cover	1	
54	1850-75230	•• SPRING	1		118	5500-82230	• RING	1	
55	0263-90416	SCREW	4		119	5944-83000	CABLE ASS'Y	1	
56	5912-81000	CARBURETOR ASS'Y	1		120	5944-83100	• CABLE COMP	1	
57	1752-81110	• SCREW	2		121	5944-73200	• CORD COMP	1	
58	5500-81120	• BRACKET	1		122	5944-73310	• TUBE	1	
59	1751-81130	• RING	1		123	2634-31420	LABEL(CE)	1	
60	1881-81140	• SWIVEL	1						
61	5500-81152	• VALVE ASS'Y	1						
62	1918-81170	• SCREW	1						
63	1751-81180	• NUT	1						
64	1881-81130	• RING	1						