



TRIMMER/BRUSHCUTTER

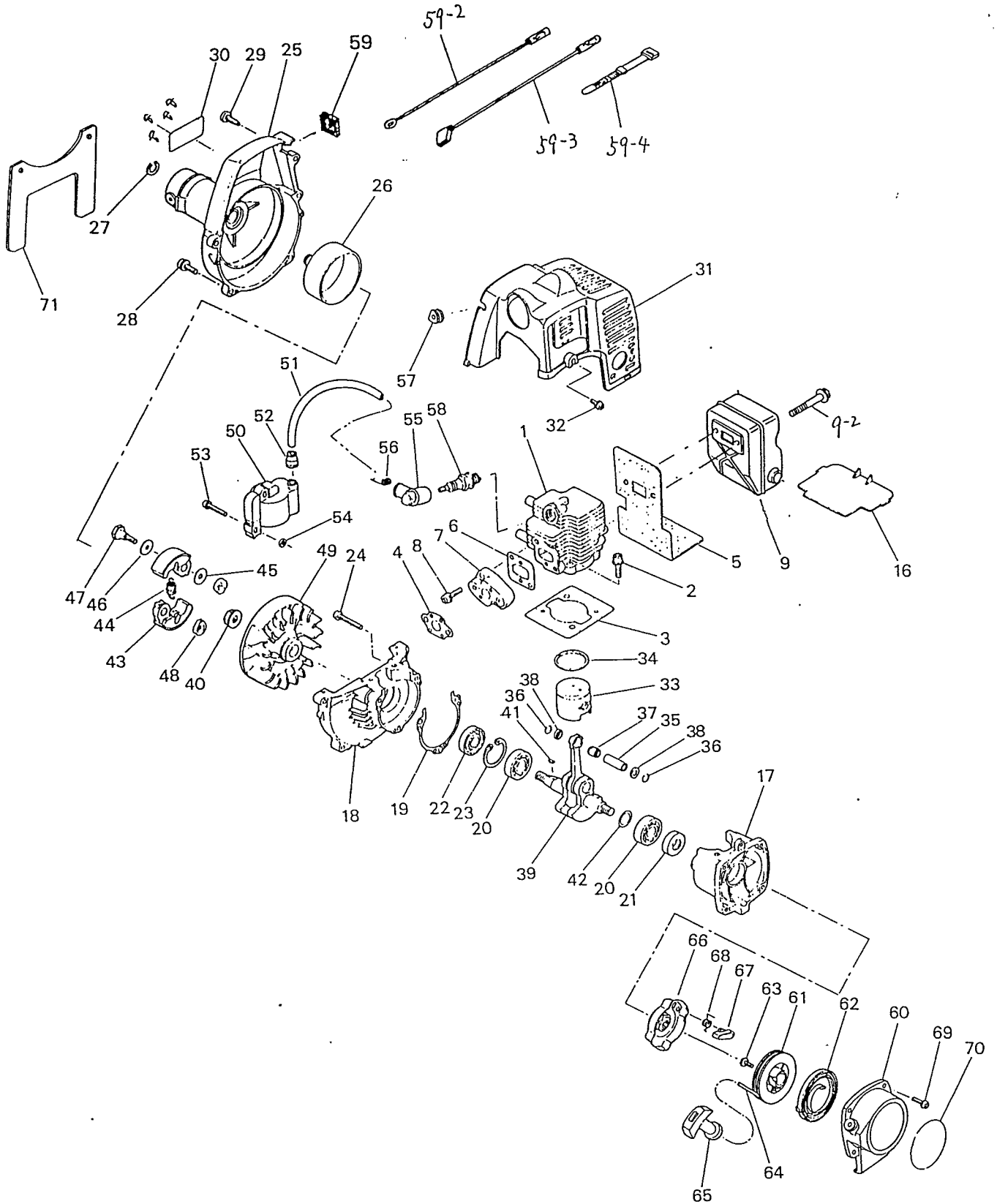
MODEL :
BC221 DL

(14向)

SERVICE PARTS LIST

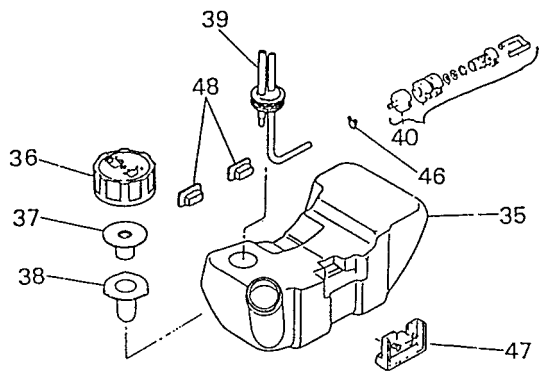
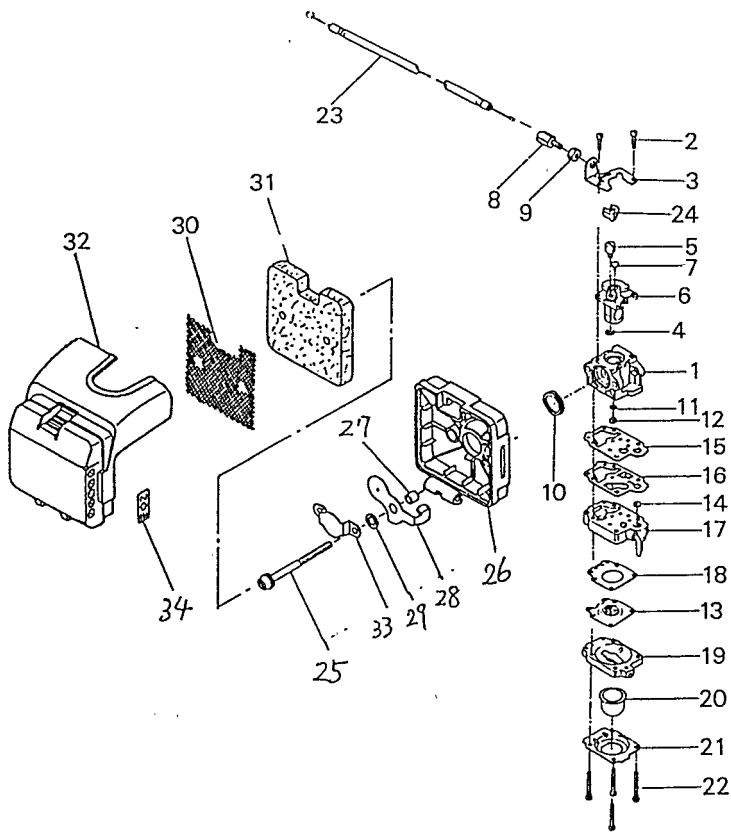
EFFECTIVE :
JULY 1992

ENGINE UNIT



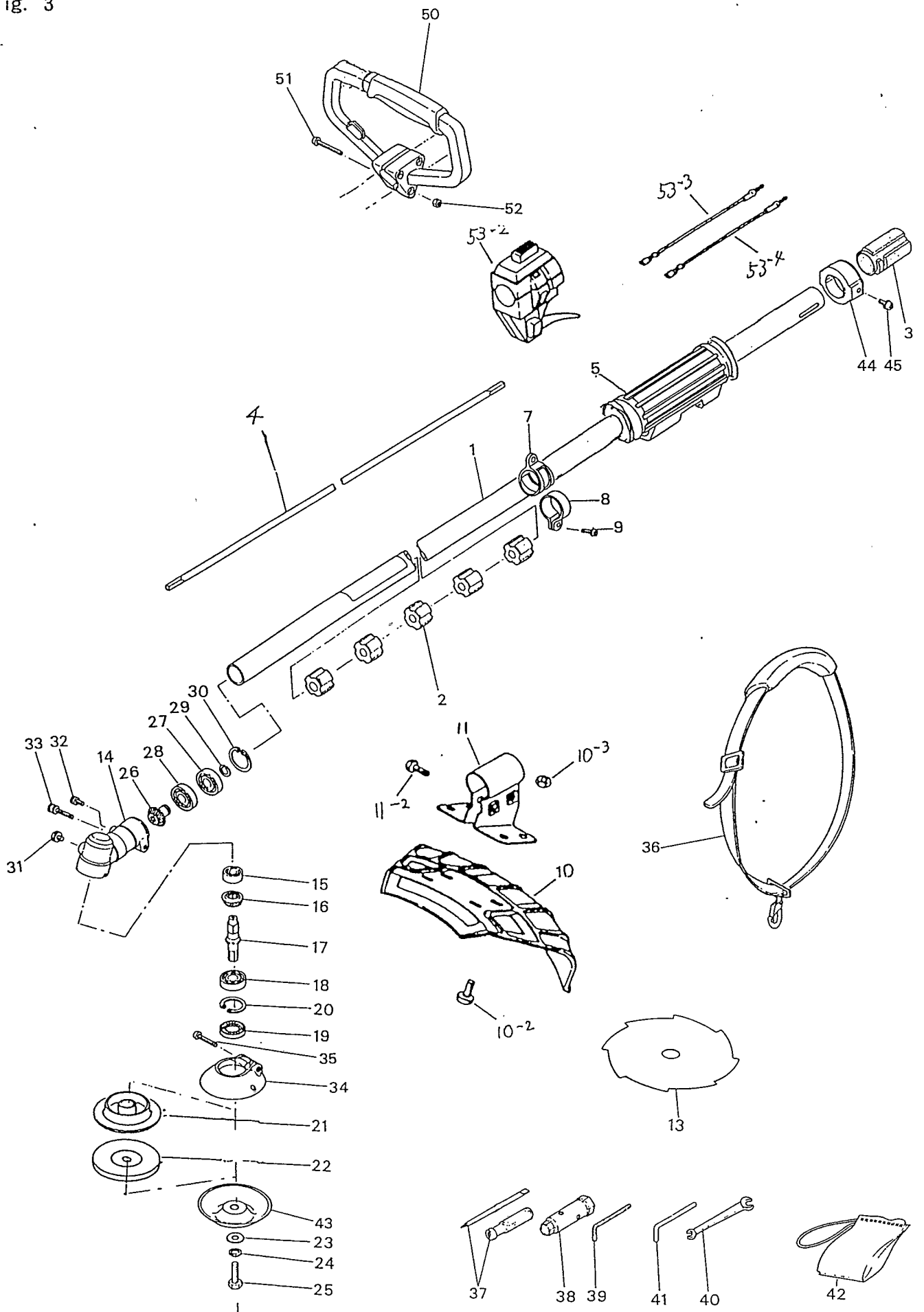
INDEX NO.	DESCRIPTION	PART NUMBER	Q'TY /UNIT	REMARKS	INDEX NO.	DESCRIPTION	PART NUMBER	Q'TY /UNIT	REMARKS
1-1	CYLINDER	1850-12112	1		1-43	SHOE	1600-51112	2	
2	BOLT	1850-12130	2		44	SPRING	1600-51223	1	
3	GASKET, CYL	1850-13122	1		45	WASHER	1140-51230	2	
4	GASKET, CARB.	1750-13131	1		46	WASHER	1850-51240	2	
5	GASKET, MUFFLER	1850-13141	1		47	SCREW	1140-51250	2	
6	GASKET, INSULATOR	1850-13150	1		48	CUSHION	1850-51262	2	
7	INSULATOR	1850-13161	1						
8	SCREW	0263-20520	2	M5 X 20L	49	ROTOR	1850-71110	1	
9	MUFFLER	1852-12110	1			COIL ASSY.	1850-71200	1	50 THRU. 5
9-2	BOLT	1854-15160	2		50	MODULE	*	1	*1850-71200
16	PLATE	1850-15252	1		51	CORD	1850-71220	1	
	CRANKCASE COMP.	1850-21101	1	17 & 18	52	CAP	2616-71320	1	
17	CRANKCASE (S)	*	1	*1850-21101	53	SCREW	0260-30422	2	M4 X 22L
18	CRANKCASE (F)	*	1	*1850-21101	54	SPACER	1260-71260	2	
19	GASKET, CRANKCASE	1850-21140	1		55	PLUG CAP	1900-72111	1	
20	BEARING	06030-06001	1		56	SPRING	1900-72120	1	
21	OIL SEAL	1100-21210	1		57	GROMMET	1140-72110	1	
22	OIL SEAL	1850-21220	1		58	SPARK PLUG	1216-73110	1	RCJ-8Y
23	SNAP RING	04065-02812	1		59	GROMMET	1852-72120	1	
24	SCREW	0260-00530	3	M5 X 30L	59-2	CORD (A)	1852-72130	1	
	HOUSING COMP.	1937-31100	1	25 THRU. 27	59-3	CORD (B)	1852-72140	1	
25	HOUSING	1853-31111	1		59-4	BAND	1852-72150	1	
26	DRUM	1850-31124	1			STARTER ASSY.	1850-75001	1	60 THRU. 6
27	SNAP RING	3180-13330	1			RECOIL ASSY.	1850-75100	1	60 THRU. 6
28	SCREW	0263-90520	4	M5 X 20L	60	CASE, RECOIL	1850-75111	1	
29	SCREW	1900-31410	1		61	REEL	1850-75120	1	
30	LABEL	1937-31112	1		62	SPRING, SPIRAL	1850-75130	1	
31	ENGINE COVER	1850-32110	1		63	SCREW	1850-75151	1	
32	SCREW	1850-32160	1	M4 X 12L	64	ROPE	1850-75160	1	
	PISTON	1178-41110	1		65	KNOB	1850-75170	1	
34	PISTON RING	1100-41210	1			PULLEY ASSY.	1850-75201	1	66 THRU. 6
35	PISTON PIN	1101-41310	1		66	PULLEY	1850-75211	1	
36	SNAP RING	1260-41320	2		67	RACHET	1850-75221	1	
37	BEARING	1140-41330	1		68	SPRING, RETURN	1850-75230	1	
38	THRUST WASHER	1101-41340	2		69	SCREW	0263-90416	4	M4 X 16L
39	CRANKSHAFT COMP.	1850-42000	1		70	LABEL	1852-75410	1	
40	NUT	1650-43230	1			STAND	1854-31910	1	
41	KEY	1000-43240	1						
42	SHIM	1130-43260	0 - 1	T 0.3MM					
42	SHIM	1140-43250	0 - 1	T 0.1MM					

Fig. 2



INDEX NO.	DESCRIPTION	PART NUMBER	Q'TY /UNIT	REMARKS
2-1	CARBURETOR ASSY.	1850-81004	1	1 THRU. 22
2	CARBURETOR BODY	*	1	*1850-81004
3	SCREW	1752-81110	2	
4	BRACKET	1850-81120	1	
5	RING	1751-81130	1	
6	SWIVEL	1881-81140	1	
7	VALVE ASSY.	1881-81150	1	
8	PLUG	1881-81160	1	
9	CABLE ADJUSTER	1918-81170	1	
10	NUT	1751-81180	1	
11	PACKING	1881-81130	1	
12	O-RING	1751-81240	1	
13	JET	1850-81250	1	
14	DIAPHRAGM	3310-81260	1	
15	SCREEN	3306-81380	1	
16	GASKET, PUMP	1065-81410	1	
17	DIAPHRAGM, PUMP	1065-81420	1	
18	BODY, PUMP	1850-81450	1	
19	GASKET, DF.	1850-81470	1	
20	BODY, PRIMER	1850-81490	1	
21	PUMP, PRIMER	1751-81510	1	
22	COVER, PRIMER	1850-81520	1	
23	SCREW, P-COVER	1850-81530	1	
24	CABLE COMP.	1855-82100	1	
25	CAP	1601-81810	1	
	SCREW	0260-30560	1	
2-26	CLEANER ASSY.	1850-82000	1	26 THRU. 34
27	BODY	1850-82111	1	
28	SLEEVE	1601-82120	2	
29	SHUTTER	1850-82132	1	
30	WASHER	1601-82140	1	
31	SCREEN	1850-82150	1	
32	ELEMENT	1850-82160	1	
33	COVER COMP.	1850-82170	1	
34	PLATE	1601-82320	1	
	LABEL	1133-82060	1	
35	TANK ASSY.	1852-85003	1	
	TANK	*	1	*1852-85003
	CAP ASSY.	3083-85200	1	
36	CAP	*	1	*3083-85200
37	VALVE	1850-85220	1	
38	COVER	1850-85230	1	
39	PIPE COMP.	1850-85600	1	
40	FILTER ASSY.	1850-85300	1	
46	CLIP	1260-85460	1	
47	CUSHION(S)	1850-86122	1	
48	CUSHION(F)	1850-86130	2	

Fig. 3

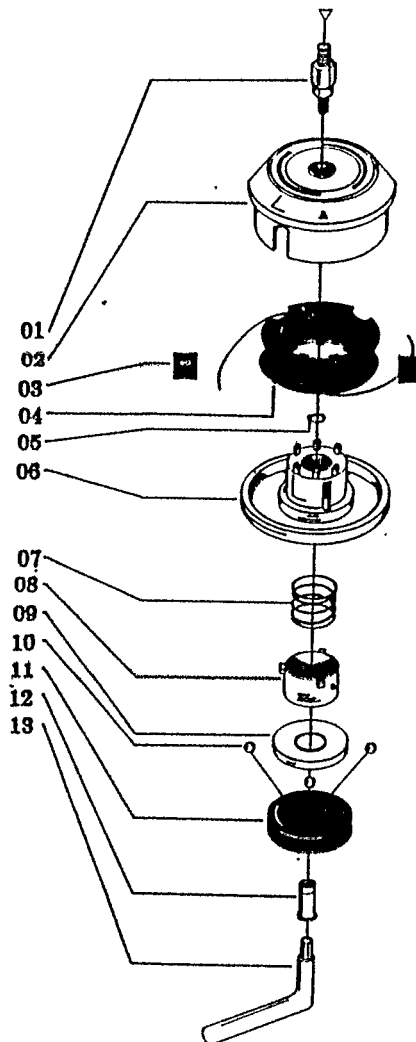


INDEX NO.	DESCRIPTION	PART NUMBER	Q'TY /UNIT	REMARKS	INDEX NO.	DESCRIPTION	PART NUMBER	Q'TY /UNIT	REMARKS
3-1	PIPE COMP.	6109-11301	1	1 THRU. 3					
	PIPE	*	1	*6109-11301	50	HANDLE ASSY.	3516-14300	1	50 THRU.52
2	BUSHING	3250-11321	5		51	HANDLE	3560-14311	1	
3	CUSHION	3565-11332	1		52	SCREW	0260-00530	3	M5 X 30L
4	SHAFT	9300-12210	1			NUT	0280-10504	3	M5
5	GRIP	3577-32140	1		53	LEVER COMP.	6110-14400	1	532THRU534
7	HANGER	6130-18100	1		53-2	LEVER	6110-14410	1	
8	CLAMP	6130-18200	1		53-3	CORD (A)	6116-14420	1	
9	SCREW	0263-90520	1	M5 X 20L	53-4	CORD (B)	6116-14430	1	
	NUT	0280-10504	1	M5					
	GUARD ASSY.	3250-24001	1	THRU.					
10	GUARD	*	1	*3250-24001					
10-2	SCREW	0260-30614	4	M6 X 14L					
10-3	NUT	0280-10605	4	M6					
11	BRACKET	3250-24120	1						
11-2	BOLT	0225-10620	2						
13	SAW 8T	6298-15241	1						
	GEARCASE ASSY.	6138-13002	1	14 THRU.33					
14	GEARCASE	3565-13121	1						
15	BEARING	06000-00608	1						
16	GEAR	3515-13220	1						
17	SHAFT, GEAR	3515-13211	1						
18	BEARING	06000-06000	1						
19	OIL SEAL	3565-13130	1						
20	SNAP RING	04065-02612	1						
21	HOLDER(A)	6138-13240	1						
22	HOLDER(B)	6138-13250	1						
23	WASHER	3560-13270	1						
24	WASHER	3560-13290	1						
25	BOLT	3560-13261	1	M7 X 25L					
26	PINION	3565-13301	1						
27	BEARING	06001-00609	1						
28	BEARING	06000-00609	1						
29	SNAP RING	3210-13330	1						
30	SNAP RING	04065-02412	1						
31	BOLT	0224-40610	1	M6 X 10L					
32	BOLT	01252-30510	1	M5 X 10L.					
33	BOLT	3350-21320	1	M5 X 30L					
	COVER ASSY.	3515-13401	1	34 THRU.35					
34	COVER	*	1	*3515-13401					
	NUT	0280-10403	1	M4					
35	SCREW	0263-30425	1	M4 X 25L					
36	STRAP	6112-17201	1						
	TOOL SET	3550-91000	1	37 THRU. 41					
37	DRIVER	1030-91340	1						
38	SOCKET	3239-91310	1						
39	WRENCH	09007-00425	1						
40	SPANNER	3540-91120	1						
41	BAR	3540-91110	1						
42	BAG	3541-91110	1						
43	COVER	3560-13284	1						
44	CAP	3565-11341	1						
45	SCREW	0263-90510	2	M5 X 10L					

Reservedelsliste for Feed-Matic snørehoved

for 'TEXAS' buskryddere

1992/1



Pos.nr.	Best.nr.	Tekst
01	10-101007	Adapter for BC 220
01a	10-101008	Adapter for 340 M
01b	10-101010	Adapter for 431 M
02	10-101061	Spolehus
03	10-106003	Snørestyr
04	10-101030	Spole
05	10-103025	Låsering
06	10-101053	Bund for spolehus
06a	10-201003	Komplet bund pos. 5-12
07	10-107006	Fjeder
08	10-101069	Fjederholder
09	10-101070	Kugleskål
10	10-102073	Stålkugle
11	10-101071	Kugleholder
12	10-101056	Bolt
13	10-109006	Nøgle
14	22007100	Snørehoved for BC 220 7 MM
15	34008125	Snørehoved for 340 M 8 MM
16	43110125	Snørehoved for 431 M 10 MM