

RESERVEDELSLISTE

TEXAS Buskrydder

Model:

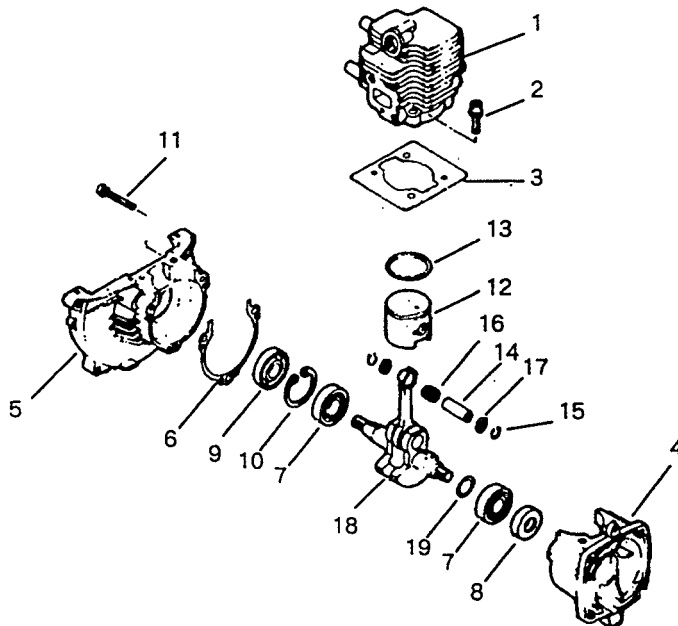
BC 220 DL

1990/1

ANDREAS PETERSEN HØJBY ApS
Knullen 2 - 5260 Odense S
Tlf.: 65 95 81 80 - Fax: 65 95 86 58

FIG. 1 ENGINE BLOCK

MODEL CODE	
A	DL60 KZ - EURO. & OTHER
B	
C	
D	
E	
F	

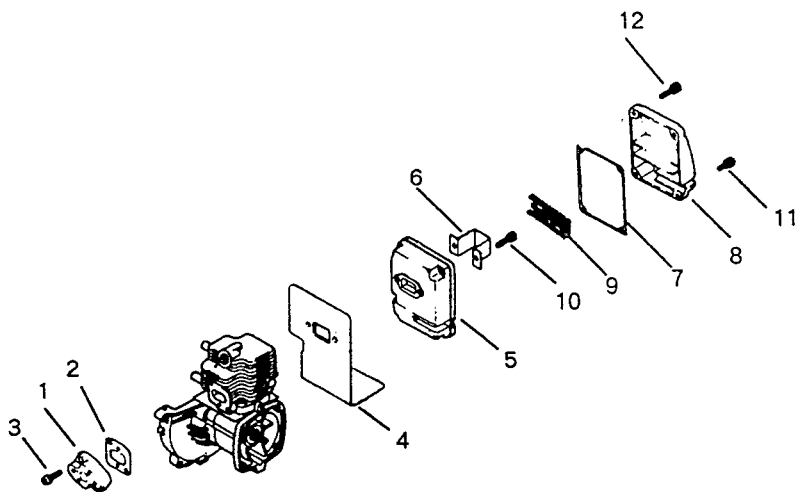


Index No.	Description	Part Number	Remarks	Q'ty per unit					
				A	B	C	D	E	F
1	CYLINDER	1850 - 12111	2 ✓	1	1	1	1	1	1
2	BOLT	1850 - 12130		2	2	2	2	2	2
3	GASKET	1850 - 13122	5 ✓	1	1	1	1	1	1
	CRANKCASE COMP.	1850 - 21101	1 4 & 5	1	1	1	1	1	1
4	CRANKCASE (S)	*	* 1850 - 21101	1	1	1	1	1	1
5	CRANKCASE (F)	*	* 1850 - 21101	1	1	1	1	1	1
6	GASKET	1850 - 21140	5 ✓	1	1	1	1	1	1
7	BEARING	06030 - 06001		2	2	2	2	2	2
8	OIL SEAL (S)	1100 - 21210	2 ✓	1	1	1	1	1	1
9	OIL SEAL (F)	1850 - 21220	2 ✓	1	1	1	1	1	1
10	SNAP RING	04065 - 02812		1	1	1	1	1	1
11	SCREW (M5x30)	0260 - 00530		3	3	3	3	3	3
12	PISTON	1178 - 41110	2 ✓	1	1	1	1	1	1
13	PISTON RING	1100 - 41210	4 ✓	1	1	1	1	1	1
14	PISTON PIN	1101 - 41310	2 ✓	1	1	1	1	1	1
15	SNAP RING	1260 - 41320	4 ✓	2	2	2	2	2	2
16	BEARING	1140 - 41330	1 ✓	1	1	1	1	1	1
17	THRUST WASHER	1101 - 41340	4 ✓	2	2	2	2	2	2
18	CRANKSHAFT COMP.	1850 - 42000	✓	1	1	1	1	1	1
19	SHIM (0.1t)	1140 - 43250		(1)	(1)	(1)	(1)	(1)	(1)
19	SHIM (0.3t)	1130 - 43260		(1)	(1)	(1)	(1)	(1)	(1)

* : Part not assigned for the version. () : Optional part.

FIG. 2 INTAKE & EXHAUST

MODEL CODE		
A	DL60	KZ - EURO. & OTHER
B		
C		
D		
E		
F		

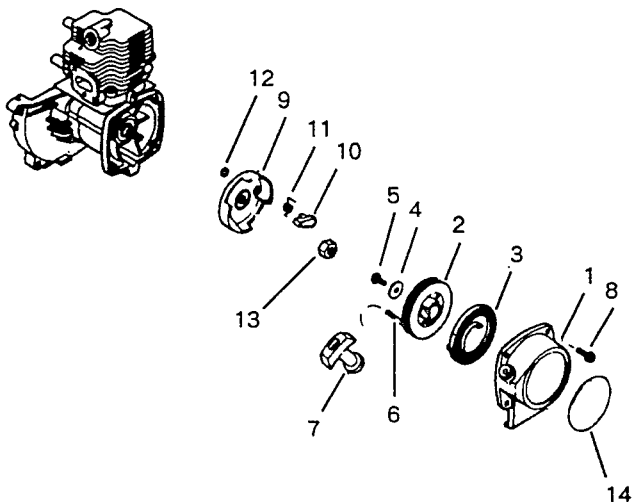


Index No.	Description	Part Number	Remarks	Qty per unit					
				A	B	C	D	E	F
1	INSULATOR	1850 - 13160	2 ✓	1	1	1	1	1	1
2	GASKET	1850 - 13150	5 ✓	1	1	1	1	1	1
3	SCREW (M5x20)	0263 - 20520		2	2	2	2	2	2
4	GASKET	1850 - 13141	5 ✓	1	1	1	1	1	1
5	BODY (A)	1850 - 15110		1	1	1	1	1	1
6	BAFFLE	1850 - 15120		1	1	1	1	1	1
7	GASKET	1850 - 15130	5 ✓	1	1	1	1	1	1
8	BODY (B)	1850 - 15140		1	1	1	1	1	1
9	SPARK ARRESTER	1854 - 15150	3	.	1
10	BOLT (M6x18)	01252 - 30618		2	2	2	2	2	2
11	BOLT (M5x14)	01252 - 30514		2	2	2	2	2	2
12	BOLT (M5x22)	01252 - 30522		2	2	2	2	2	2

. : Part not assigned for the version. () : Optional part.

FIG. 3 STARTER

MODEL CODE	
A	DL60 KZ - EURO. & OTHER
B	
C	
D	
E	
F	

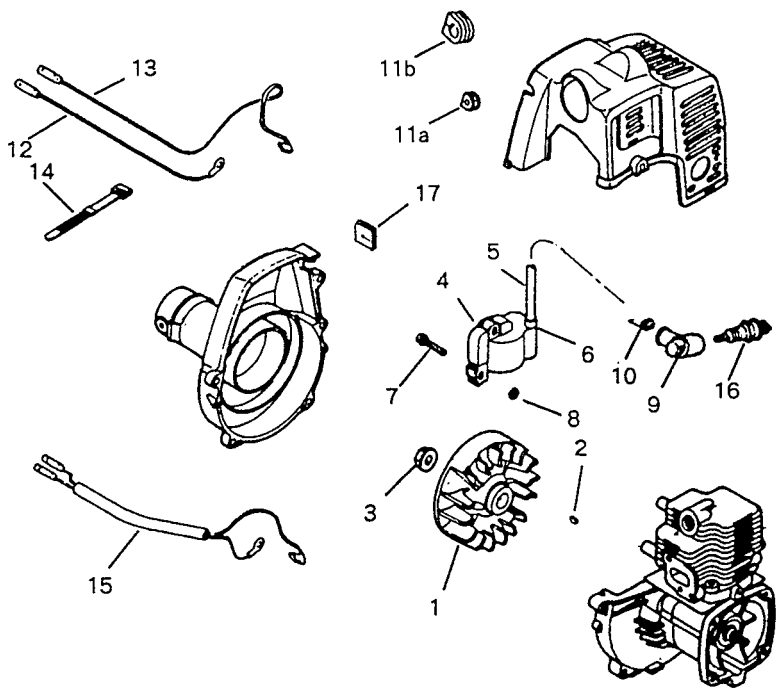


Index No.	Description	Part Number	Remarks	Qty per unit					
				A	B	C	D	E	F
	RECOIL STARTER ASS'Y	1850 - 75100	1 ✓ 1 to 7	1	1	1	1	1	1
1	CASE	*	* 1850 - 75100	1	1	1	1	1	1
2	REEL	1850 - 75120	1 ✓	1	1	1	1	1	1
3	SPIRAL SPRING	1850 - 75130	1 ✓	1	1	1	1	1	1
4	WASHER	1850 - 75140	1 ✓	1	1	1	1	1	1
5	SCREW	1850 - 75150	1 ✓	1	1	1	1	1	1
6	ROPE	1850 - 75160	1 ✓	1	1	1	1	1	1
7	KNOB	1850 - 75170	1 ✓	1	1	1	1	1	1
8	SCREW (M4x16)	0263 - 90416		4	4	4	4	4	4
9	PULLEY ASS'Y	1850 - 75200	2 ✓ 9 to 12	1	1	1	1	1	1
9	PULLEY	*	* 1850 - 75200	1	1	1	1	1	1
10	RATCHET	1850 - 75220	10 ✓	1	1	1	1	1	1
11	RETURN SPRING	1850 - 75230	10 ✓	1	1	1	1	1	1
12	E - RING	1034 - 72180	10 ✓	1	1	1	1	1	1
13	NUT	1140 - 43230	2 ✓	1	1	1	1	1	1
14	LABEL	1852 - 75410	KOMATSU ZENOAH	1	•	1	1	1	•
14	LABEL	1854 - 75410	REDMAX	•	1	•	•	•	1

• : Part not assigned for the version. () : Optional part.

FIG. 4 IGNITION GROUP

MODEL CODE		
A	DL60	KZ - EURO. & OTHER
B		
C		
D		
E		
F		

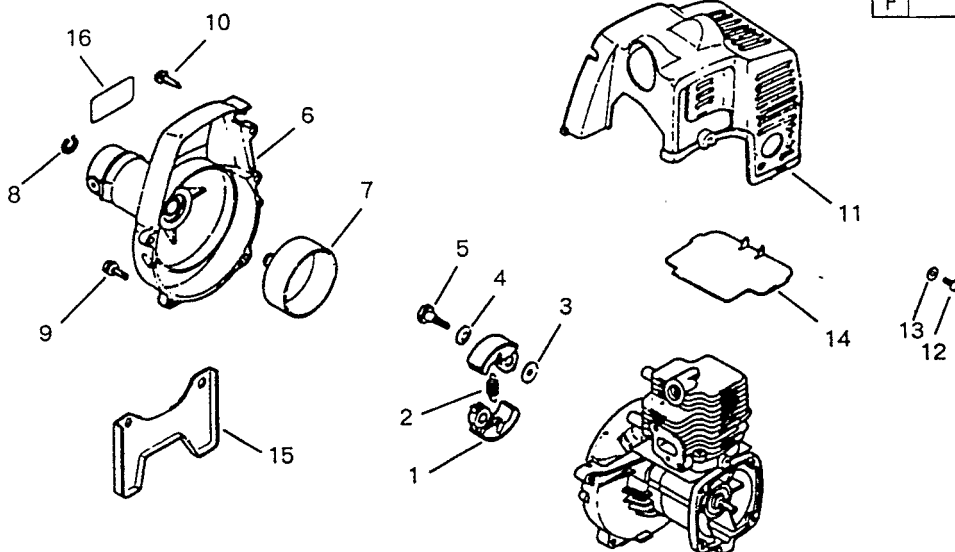


Index No.	Description	Part Number	Remarks	Q'ty per unit					
				A	B	C	D	E	F
1	ROTOR	1850 - 71110		1	1	1	1	1	1
2	KEY	1000 - 43240	1 SV	1	1	1	1	1	1
3	NUT	1650 - 43230		1	1	1	1	1	1
4	COIL ASS'Y	1850 - 71200	2 to 6	1	1	1	1	1	1
	MODULE	*	* 1850 - 71200	1	1	1	1	1	1
5	CORD, high tension	1850 - 71220		1	1	1	1	1	1
6	CAP	2616 - 71320		1	1	1	1	1	1
7	SCREW (M4x22)	0260 - 30422		2	2	2	2	2	2
8	SPACER	1260 - 71260		2	2	2	2	2	2
9	CAP, spark plug	1900 - 72111		1	1	1	1	1	1
10	SPRING	1900 - 72120		1	1	1	1	1	1
11a	GROMMET	1140 - 72110		1	.	1	1	1	.
11b	GROMMET	1895 - 72110		.	1	.	.	.	1
12	CORD (A)	1852 - 72130	Black	1	.	1	1	1	.
13	CORD (B)	1852 - 72140	Red	1	.	1	1	1	.
14	Band	1852 - 72150		1	.	1	1	1	.
15	CORD COMP.	1895 - 72130	2	.	1	.	.	.	1
16	SPARK PLUG	1115 - 73111	Champion RCJ - 8	1	1	1	1	1	1
17	GROMMET	1852 - 72120		1	1	1	1	1	1

. : Part not assigned for the version. () : Optional part.

FIG. 5 CLUTCH & COVERS

MODEL CODE	
A	DL60 KZ - EURO. & OTHER
B	
C	
D	
E	
F	

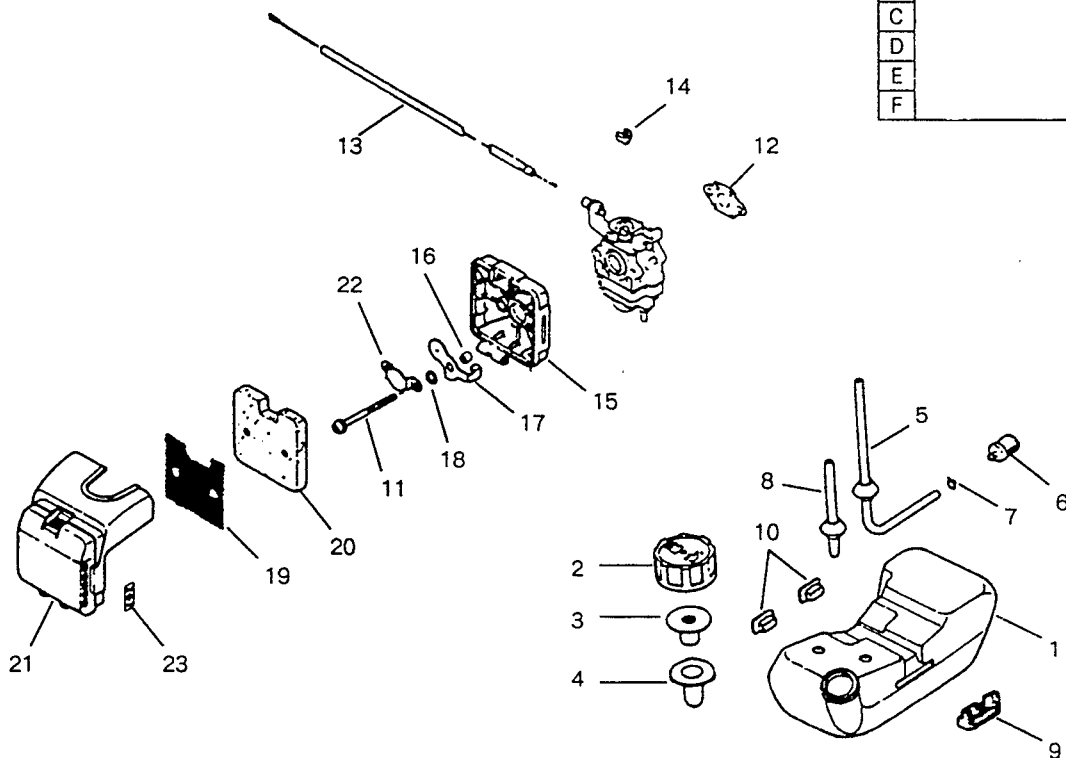


Index No.	Description	Part Number	Remarks	Q'ty per unit					
				A	B	C	D	E	F
1	CLUTCH SHOE	1600 - 51111	20	2	2	2	2	2	2
2	SPRING	1752 - 51220	19	1	1	1	1	1	1
3	FLAT WASHER	1140 - 51230		2	2	2	2	2	2
4	WAVE WASHER	1140 - 51241		2	2	2	2	2	2
5	SCREW	1140 - 51250	6 ✓	2	2	2	2	2	2
6	HOUSING COMP.	1850 - 31101	3 ✓	1	1	1	1	1	1
6	HOUSING, clutch	*	* 1850 - 31101	1	1	1	1	1	1
7	CLUTCH DRUM	*	* 1850 - 31101	1	1	1	1	1	1
8	SNAP RING	3180 - 13330		1	1	1	1	1	1
9	SCREW (M5x20)	0263 - 90520		4	4	4	4	4	4
10	SCREW	1900 - 31410		1	1	1	1	1	1
11	ENGINE COVER	1850 - 32110	1 ✓	1	1	1	1	1	1
12	SCREW (M4x12)	0263 - 90412		1	1	1	1	1	1
13	FLAT WASHER	1850 - 32130		1	1	1	1	1	1
14	PLATE	1850 - 15252		1	1	1	1	1	1
15	STAND	1854 - 31910		1	1	1	1	1	1
16	LABEL	1852 - 31120		1	•	1	1	1	•
16	LABEL	1854 - 31120		•	1	•	•	•	1

• : Part not assigned for the version. () : Optional part.

FIG. 6 FUEL TANK & AIR CLEANER GROUP

MODEL CODE		
A	DL60	KZ - EURO. & OTHER
B		
C		
D		
E		
F		

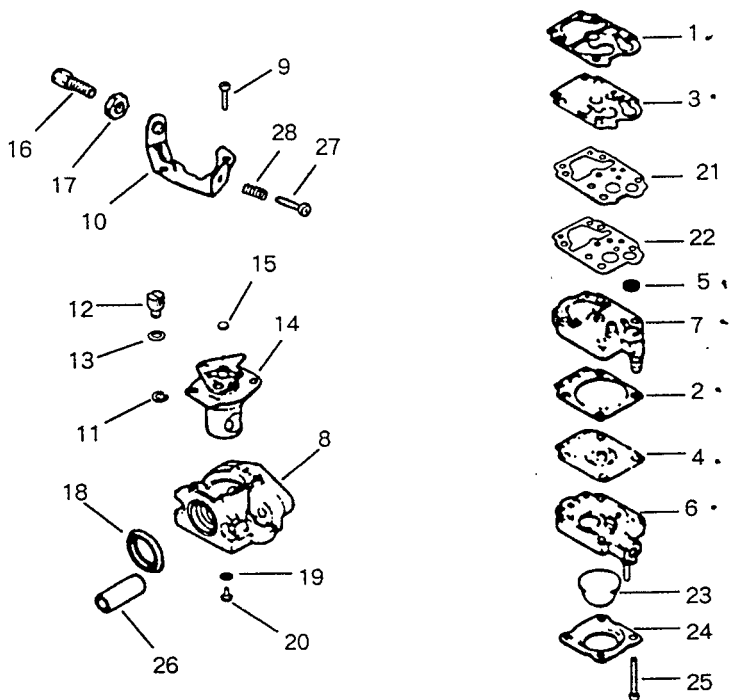


Index No.	Description	Part Number	Remarks	Q'ty per unit					
				A	B	C	D	E	F
1	FUEL TANK ASS'Y	1852 - 85002	2 1 to 8	1	1	1	1	1	1
	TANK	*	* 1852 - 85002	1	1	1	1	1	1
2	CAP ASS'Y	3083 - 85200	10 2 to 4	1	1	1	1	1	1
	CAP	*	* 3083 - 85200	1	1	1	1	1	1
3	VALVE	1850 - 85220		1	1	1	1	1	1
4	COVER	1850 - 85230		1	1	1	1	1	1
5	SUCTION PIPE	1850 - 85401	10 1	1	1	1	1	1	1
6	FUEL FILTER ASS'Y	1850 - 85300	10 1	1	1	1	1	1	1
7	CLIP	1260 - 85460	10 1	1	1	1	1	1	1
8	RETURN PIPE	1601 - 85701	10 1	1	1	1	1	1	1
9	CUSHION (S)	1850 - 86122	3 1	1	1	1	1	1	1
10	CUSHION (F)	1850 - 86130	6 2	2	2	2	2	2	2
11	SCREW (M5x60)	0260 - 30560		2	2	2	2	2	2
12	GASKET	1750 - 13131	10 1	1	1	1	1	1	1
13	THROTTLE CABLE	1855 - 82100	10 1	1	1	1	1	1	1
14	CAP	1601 - 81810		1	1	1	1	1	1
15	AIR CLEANER ASS'Y	1850 - 82000	5 15 to 23	1	1	1	1	1	1
	BODY	1850 - 82111		1	1	1	1	1	1
16	SLEEVE	1601 - 82120	2 2	2	2	2	2	2	2
17	SHUTTER	1850 - 82131	2 1	1	1	1	1	1	1
18	FLAT WASHER	1601 - 82140		1	1	1	1	1	1
19	SCREEN	1850 - 82150	5 1	1	1	1	1	1	1
20	FILTER ELEMENT	1850 - 82160	15 1	1	1	1	1	1	1
21	COVER	1850 - 82170	5 1	1	1	1	1	1	1
22	PLATE	1601 - 82320		1	1	1	1	1	1
23	LABEL	1133 - 82060	Choke	1	1	1	1	1	1

* : Part not assigned for the version. (): Optional part.

FIG. 7 CARBURETOR

MODEL CODE		
A	DL60	KZ - EURO. & OTHER
B		
C		
D		
E		
F		

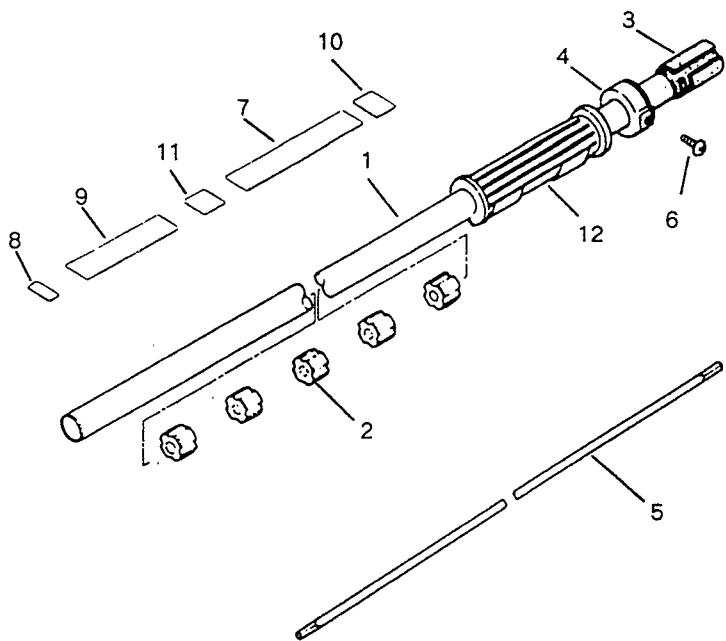


Index No.	Description	Part Number	Remarks	Qty per unit					
				A	B	C	D	E	F
	CARBURETOR ASS'Y	1850 - 81001	5 1 to 28 ✓	1	1	1	1	1	1
	REPAIR KIT	1850 - 06030	10 1 to 7 ✓	(1)	(1)	(1)	(1)	(1)	(1)
	GASKET KIT	1850 - 06020	10 1 to 4 ✓	(1)	(1)	(1)	(1)	(1)	(1)
1	GASKET, pump diaphragm	1065 - 81410		1	1	1	1	1	1
2	GASKET, metering diaphragm	1751 - 81470		1	1	1	1	1	1
3	DIAPHRAGM, pump	1065 - 81420		1	1	1	1	1	1
4	DIAPHRAGM, metering	3310 - 81260		1	1	1	1	1	1
5	SCREEN, fuel inlet	3306 - 81380		1	1	1	1	1	1
6	BODY, primer	1751 - 81490		1	1	1	1	1	1
7	BODY, pump	1766 - 81450		1	1	1	1	1	1
8	BODY, carburetor	*	* 1850 - 81001	1	1	1	1	1	1
9	SCREW	1752 - 81110		2	2	2	2	2	2
10	BRACKET	1750 - 81121	2 ✓	1	1	1	1	1	1
11	SNAP RING	1751 - 81130	2 ✓	1	1	1	1	1	1
12	SWIVEL	1751 - 81141	2 ✓	1	1	1	1	1	1
13	WASHER	1751 - 81190	2 ✓	1	1	1	1	1	1
14	VALVE ASS'Y	1850 - 81150	5 ✓	1	1	1	1	1	1
15	PLUG	1751 - 81160	5 ✓	1	1	1	1	1	1
16	ADJUSTER, cable	1751 - 81170	5 ✓	1	1	1	1	1	1
17	NUT	1751 - 81180	5 ✓	1	1	1	1	1	1
18	RING PACKING	1751 - 81230	5 ✓	1	1	1	1	1	1
19	O - RING	1751 - 81240	5 ✓	1	1	1	1	1	1
20	MAIN JET	1630 - 81250	5 # 46 ✓	1	1	1	1	1	1
21	PLATE, pump	1751 - 81430	5 ✓	1	1	1	1	1	1
22	GASKET	1751 - 81440	5 ✓	1	1	1	1	1	1
23	PUMP, primer	1751 - 81510	5 ✓	1	1	1	1	1	1
24	COVER, primer	1751 - 81520	5 ✓	1	1	1	1	1	1
25	SCREW	1752 - 81530		4	4	4	4	4	4
26	SLEEVE	1751 - 81220	5 ✓	2	2	2	2	2	2
27	SCREW, idle adjust	1751 - 81310	5 ✓	1	1	1	1	1	1
28	SPRING	1751 - 81320	5 ✓	1	1	1	1	1	1

* : Part not assigned for the version. () : Optional part.

FIG. 8 DRIVE SHAFT GROUP

MODEL CODE		
A	DL60	KZ - EURO. & OTHER
B		
C		
D		
E		
F		

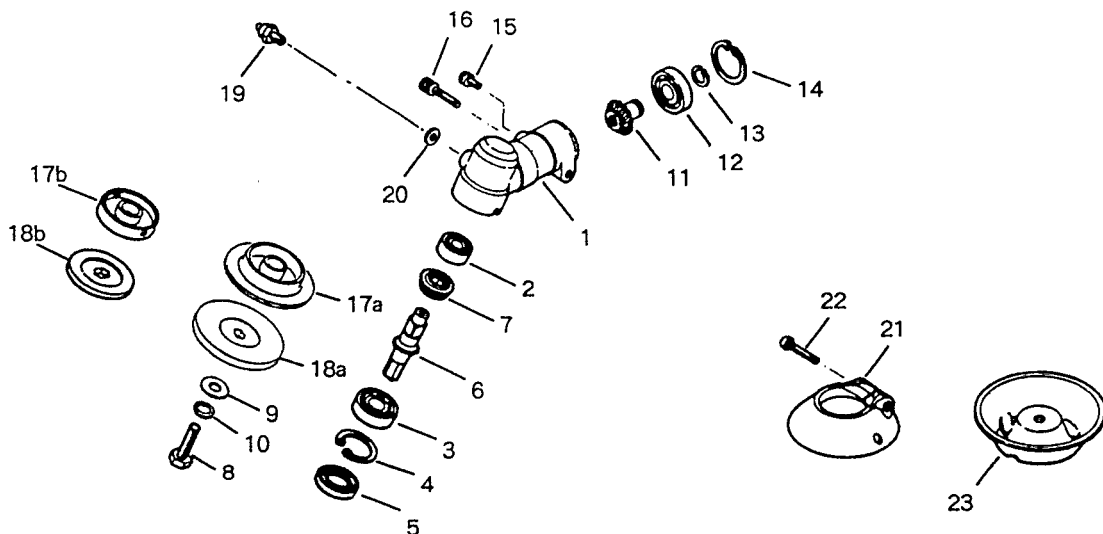


Index No.	Description	Part Number	Remarks	Q'ty per unit					
				A	B	C	D	E	F
1	PIPE COMP.	6109 - 11300	2 1 to 3	1	1	1	1	1	1
	PIPE, outer	*	* 6109 - 11300	1	1	1	1	1	1
2	BUSHING	3250 - 11321	5	5	5	5	5	5	5
3	CUSHION	3565 - 11331	2	1	1	1	1	1	1
4	CAP	3565 - 11341	2	1	1	1	1	1	1
5	SHAFT, drive	3565 - 12211	5 Square-ended	1	1	1	1	1	1
6	SCREW (M5x10)	0263 - 90510		2	2	2	2	2	2
7	LABEL, model name	6109 - 11510		1	.	1	1	.	.
7	LABEL, model name	6112 - 11511		.	1	.	.	.	1
7	LABEL, model name	6120 - 11510		1	.
8	LABEL, positioning	3553 - 11551		1	1	1	1	1	1
9	LABEL, caution	3975 - 12521		1	.	1	1	1	.
10	LABEL, caution	6068 - 12610		.	.	1	.	.	.
11	LABEL, caution	2654 - 54330		1
12	GRIP	3577 - 32140	2	1	1	1	1	1	1

. : Part not assigned for the version. () : Optional part.

FIG. 9 GEAR CASE GROUP

MODEL CODE		
A	DL60	KZ - EURO. & OTHER
B		
C		
D		
E		
F		

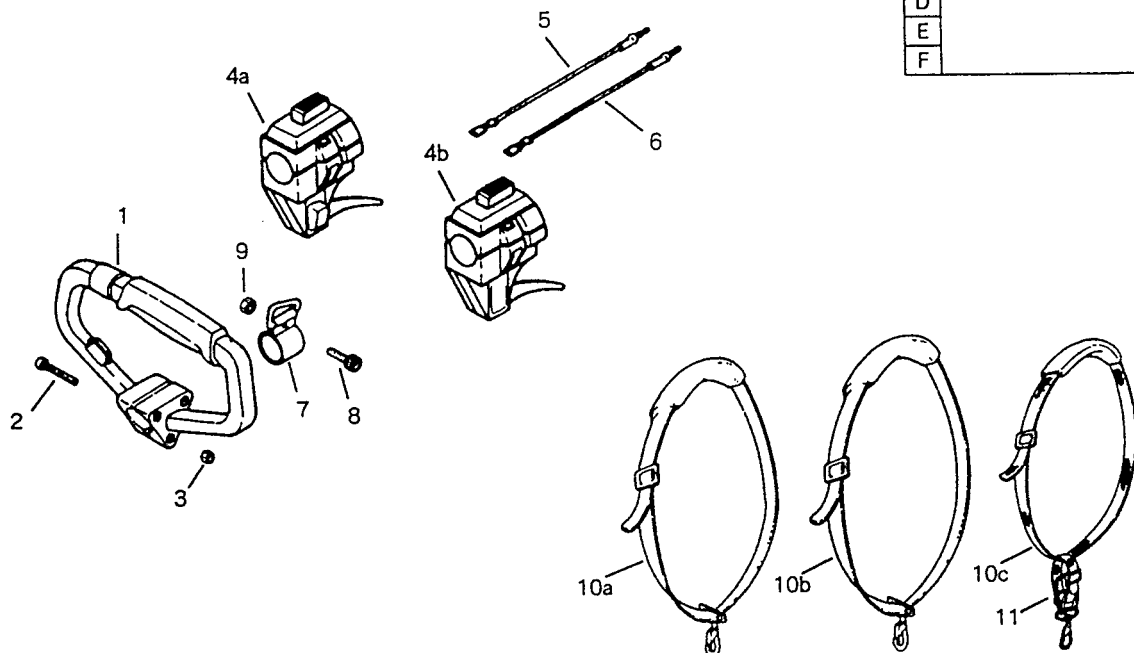


Index No.	Description	Part Number	Remarks	Q'ty per unit					
				A	B	C	D	E	F
	GEAR CASE ASS'Y	6138 - 13000	5 1 to 20 (take "a") ✓	1	.	1	1	1	.
	GEAR CASE ASS'Y	6110 - 13002	1 to 20 (take "b")	.	1	.	.	.	1
1	GEAR CASE	3515 - 13122		1	1	1	1	1	1
2	BEARING	06000 - 00608		1	1	1	1	1	1
3	BEARING	06000 - 06000		1	1	1	1	1	1
4	SNAP RING	04065 - 02612		1	1	1	1	1	1
5	OIL SEAL	3565 - 13130		1	1	1	1	1	1
6	GEAR SHAFT	3515 - 13210		1	1	1	1	1	1
7	GEAR	3515 - 13220	Teeth : 21	1	1	1	1	1	1
8	BOLT (M7x25 LH)	3560 - 13261	Hex 13	1	1	1	1	1	1
9	FLAT WASHER	3560 - 13270		1	1	1	1	1	1
10	SPRING WASHER (LH)	3560 - 13290		1	1	1	1	1	1
11	PINION COMP.	3565 - 13300	5 Teeth : 17	1	1	1	1	1	1
12	BEARING	06001 - 00609		1	1	1	1	1	1
13	SNAP RING	3210 - 13330		1	1	1	1	1	1
14	SNAP RING	04065 - 02412	5	1	1	1	1	1	1
15	BOLT (M5x10)	01252 - 30510		1	1	1	1	1	1
16	BOLT (M5x30)	3350 - 21320		1	1	1	1	1	1
17a	HOLDER (A)	6138 - 13240	OD : 60mm ✓	1	.	1	1	1	.
17b	HOLDER (A)	3515 - 13241	OD : 38mm	.	1	.	.	.	1
18a	HOLDER (B)	6138 - 13250	OD : 60mm ✓	1	.	1	1	1	.
18b	HOLDER (B)	3515 - 13250	OD : 40mm	.	1	.	.	.	1
19	FITTING, grease	3199 - 13350		1	1	1	1	1	1
20	FLAT WASHER	01641 - 20608		1	1	1	1	1	1
	COVER ASS'Y	3515 - 13400	30 21 & 22	1	(1)	1	1	1	(1)
21	COVER, neck	*	* 3515 - 13400	1	(1)	1	1	1	(1)
22	SCREW (M4x25)	0263 - 30425		1	(1)	1	1	1	(1)
23	COVER, blade bolt	3560 - 13284	30 50	1	(1)	1	1	1	(1)

. : Part not assigned for the version. () : Optional part.

FIG. 10 HANDLE & STRAP GROUP

MODEL CODE		
A	DL60	KZ - EURO. & OTHER
B		
C		
D		
E		
F		

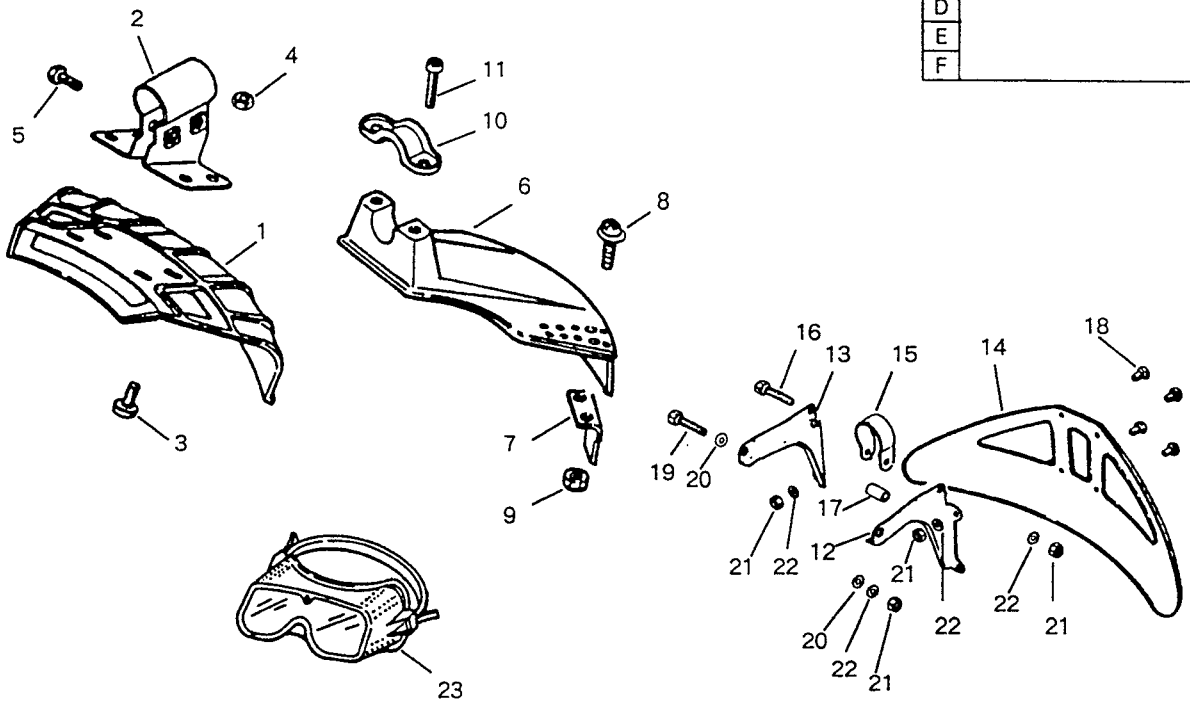


Index No.	Description	Part Number	Remarks	Q'ty per unit					
				A	B	C	D	E	F
1	HANDLE ASS'Y	3516 - 14300	4 1 to 3	1	1	1	1	1	1
	HANDLE	*	* 3516 - 14300	1	1	1	1	1	1
2	SCREW (M5x30)	0260 - 00530		3	3	3	3	3	3
3	NUT	0280 - 10504		3	3	3	3	3	3
	LEVER COMP., throttle	6110 - 14400	4a to 6	1	.	1	1	1	.
	LEVER ASS'Y, throttle	6041 - 12300	4b to 6	.	1	.	.	.	1
4a	LEVER, throttle	6110 - 14410	10 Lock type ✓	1	.	1	1	1	.
4b	LEVER, throttle	6041 - 12400	Non - lock type	.	1	.	.	.	1
5	CORD (A)	6116 - 14420	Black	1	1	1	1	1	1
6	CORD (B)	6116 - 14430	Red	1	1	1	1	1	1
	HANGER COMP.	3520 - 17110	5	1	1	1	1	1	1
8	BOLT (M5x10)	01252 - 30510		1	1	1	1	1	1
9	NUT	0280 - 10504		1	1	1	1	1	1
10a	STRAP ASS'Y	3565 - 17201	10 5	1	.	1	.	1	.
10b	STRAP ASS'Y	6112 - 17201		.	1	.	.	.	1
10c	STRAP ASS'Y	3520 - 96404		.	.	.	1	.	.
11	CUSHION	3146 - 17251		.	.	.	1	.	.

. : Part not assigned for the version. () : Optional part.

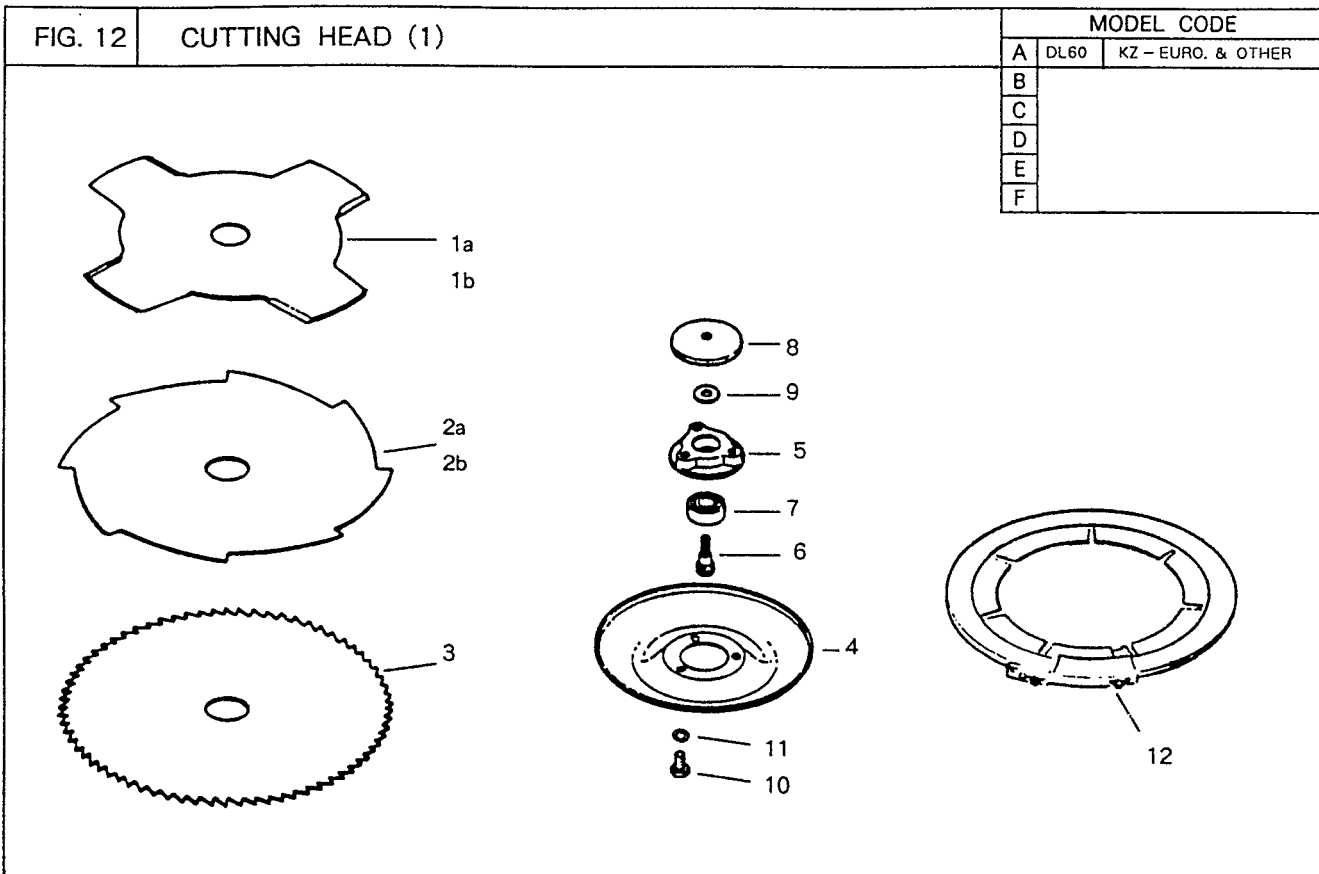
FIG. 11 GUARD GROUP

MODEL CODE	
A	DL60 KZ - EURO. & OTHER
B	
C	
D	
E	
F	



Index No.	Description	Part Number	Remarks	Q'ty per unit					
				A	B	C	D	E	F
1	GUARD ASS'Y	3250 - 24001	10 1 to 5	1	•	1	1	1	•
	GUARD	3231 - 24114	30 Plastics	1	•	1	1	1	•
2	BRACKET	3250 - 24120	10	1	•	1	1	1	•
3	SCREW (M6x14)	0260 - 30614		4	•	4	4	4	•
4	NUT	0280 - 10605		4	•	4	4	4	•
5	BOLT (M6x20)	0225 - 10620		2	•	2	2	2	•
6	GUARD ASS'Y	6112 - 24000	6 to 11	•	1	•	•	•	1
	GUARD	6041 - 24110	Plastics	•	1	•	•	•	1
7	BLADE, line cutting	6041 - 24140		•	1	•	•	•	1
8	SCREW (M5x12)	0263 - 30512		•	2	•	•	•	2
9	NUT	3320 - 15310		•	2	•	•	•	2
10	CLAMP	3520 - 24120		•	1	•	•	•	1
11	BOLT (M6x30)	3540 - 24130		•	2	•	•	•	2
12	GUARD ASS'Y	3554 - 24000	12 to 22	(1)	(1)	(1)	(1)	(1)	(1)
	BRACKET (A)	3535 - 24110		(1)	(1)	(1)	(1)	(1)	(1)
	BRACKET (B)	3535 - 24120		(1)	(1)	(1)	(1)	(1)	(1)
	GUARD	3180 - 24130	Steel	(1)	(1)	(1)	(1)	(1)	(1)
	CLAMP	3210 - 25120		(1)	(1)	(1)	(1)	(1)	(1)
	BOLT (M5x30)	01252 - 30530		(1)	(1)	(1)	(1)	(1)	(1)
	SPACER	3144 - 24150		(1)	(1)	(1)	(1)	(1)	(1)
	SCREW (M5x10)	0260 - 00510		(4)	(4)	(4)	(4)	(4)	(4)
	BOLT (M5x35)	3554 - 24190		(1)	(1)	(1)	(1)	(1)	(1)
	FLAT WASHER	01642 - 20508		(2)	(2)	(2)	(2)	(2)	(2)
	NUT	0280 - 10504		(6)	(6)	(6)	(6)	(6)	(6)
	SPRING WASHER	01601 - 20513		(6)	(6)	(6)	(6)	(6)	(6)
23	GOGGLE	6242 - 92110		(1)	1	(1)	(1)	(1)	(1)

• : Part not assigned for the version. () : Optional part.



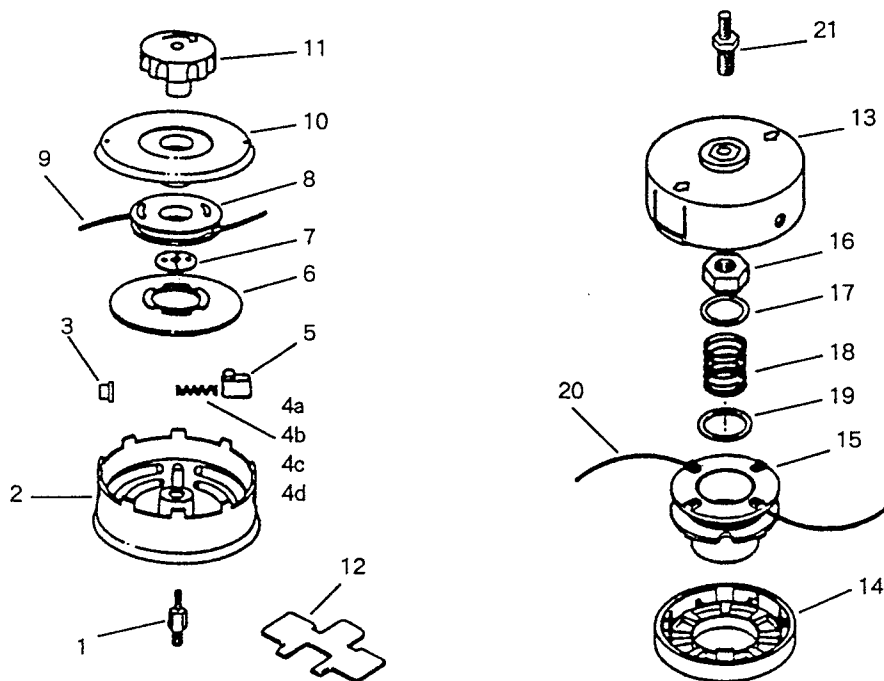
Index No.	Description	Part Number	Remarks	Q'ty per unit					
				A	B	C	D	E	F
1a	METAL BLADE 9"x4T	6299 - 14240	Blue	(1)	(1)	(1)	1	(1)	(1)
1b	METAL BLADE 9"x4T	6299 - 14260	Black	(1)	(1)	(1)	(1)	(1)	(1)
2a	METAL BLADE 9"x8T	6299 - 15240	Blue	1	(1)	1	(1)	1	(1)
2b	METAL BLADE 9"x8T	6299 - 15260	Black	(1)	(1)	(1)	(1)	(1)	(1)
3	METAL BLADE 9"x80T	6299 - 11210		(1)	(1)	(1)	1	(1)	(1)
	STABILIZER ASS'Y	6116 - 92500	4 to 11	(1)	(1)	(1)	1	(1)	(1)
4	STABILIZER	3130 - 15312		(1)	(1)	(1)	1	(1)	(1)
5	HOLDER, bearing	3530 - 15331		(1)	(1)	(1)	1	(1)	(1)
6	SHAFT	3560 - 15352		(1)	(1)	(1)	1	(1)	(1)
7	BEARING	06004 - 06003		(1)	(1)	(1)	1	(1)	(1)
8	COVER	3530 - 15370		(1)	(1)	(1)	1	(1)	(1)
9	SPACER	3530 - 15380		(1)	(1)	(1)	1	(1)	(1)
10	BOLT (M6x12)	0212 - 50612		(3)	(3)	(3)	3	(3)	(3)
11	SPRING WASHER	0290 - 20615		(3)	(3)	(3)	3	(3)	(3)
12	COVER, blade	6251 - 15910		1	(1)	1	1	1	1

* : Part not assigned for the version. (): Optional part.

FIG. 13

CUTTING HEAD (2)

MODEL CODE		
A	DL60	KZ - EURO. & OTHER
B		
C		
D		
E		
F		



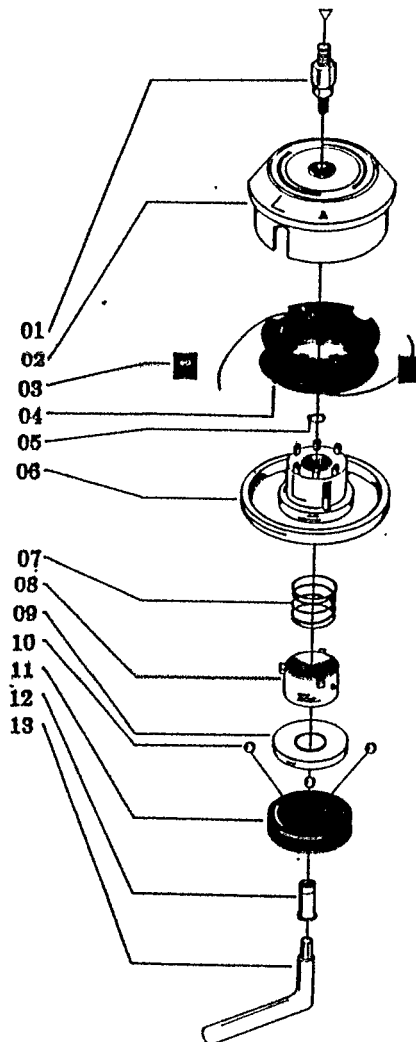
Index No.	Description	Part Number	Remarks	Q'ty per unit					
				A	B	C	D	E	F
	FULL - AUTO HEAD KIT	6112 - 15003	1 to 12	(1)	1	(1)	(1)	(1)	1
1	ADAPTER	6112 - 15110		(1)	1	(1)	(1)	(1)	1
2	HOUSING, spool	6232 - 15210		(1)	1	(1)	(1)	(1)	1
3	EYELET	6232 - 15221		(2)	2	(2)	(2)	(2)	2
4a	SPRING, cam	6232 - 15320	Red (Soft)	(4)	4	(4)	(4)	(4)	4
4b	SPRING, cam	6232 - 15310	White (Very soft)	(4)	(4)	(4)	(4)	(4)	(4)
4c	SPRING, cam	6232 - 15330	Silver (Hard)	(4)	(4)	(4)	(4)	(4)	(4)
4d	SPRING, cam	6232 - 15340	Yellow (Very hard)	(4)	(4)	(4)	(4)	(4)	(4)
5	SLIDE, cam	6232 - 15350		(4)	4	(4)	(4)	(4)	4
6	DISK, cam	6232 - 15360		(1)	1	(1)	(1)	(1)	1
7	FLAT NUT	6232 - 15120		(1)	1	(1)	(1)	(1)	1
8	SPOOL	6232 - 15410		(1)	1	(1)	(1)	(1)	1
9	LINE	6232 - 15420	2.3mm x 5m	(1)	1	(1)	(1)	(1)	1
10	COVER	6232 - 15231		(1)	1	(1)	(1)	(1)	1
11	KNOB	6232 - 15240		(1)	1	(1)	(1)	(1)	1
12	TOOL	6232 - 15510		(1)	1	(1)	(1)	(1)	1
	SEMI - AUTO HEAD ASS'Y	3550 - 99100	13 to 20	(1)	(1)	(1)	(1)	(1)	(1)
13	CASE (A)	3231 - 99111		(1)	(1)	(1)	(1)	(1)	(1)
14	CASE (B)	3231 - 99131		(1)	(1)	(1)	(1)	(1)	(1)
15	HOLDER, line	3231 - 99140		(1)	(1)	(1)	(1)	(1)	(1)
16	NUT (M10 L.H.)	3550 - 99120		(1)	(1)	(1)	(1)	(1)	(1)
17	PLATE, upper	3268 - 15150		(1)	(1)	(1)	(1)	(1)	(1)
18	SPRING	3268 - 15160		(1)	(1)	(1)	(1)	(1)	(1)
19	PLATE, lower	3268 - 15170		(1)	(1)	(1)	(1)	(1)	(1)
20	LINE	3268 - 15180	2.1mm x 5m	(1)	(1)	(1)	(1)	(1)	(1)
21	SHAFT (M7 L.H.)	3550 - 99210		(1)	(1)	(1)	(1)	(1)	(1)

• : Part not assigned for the version. () : Optional part.

Reservedelsliste for Feed-Matic snørehoved

for 'TEXAS' buskryddere

1992/1

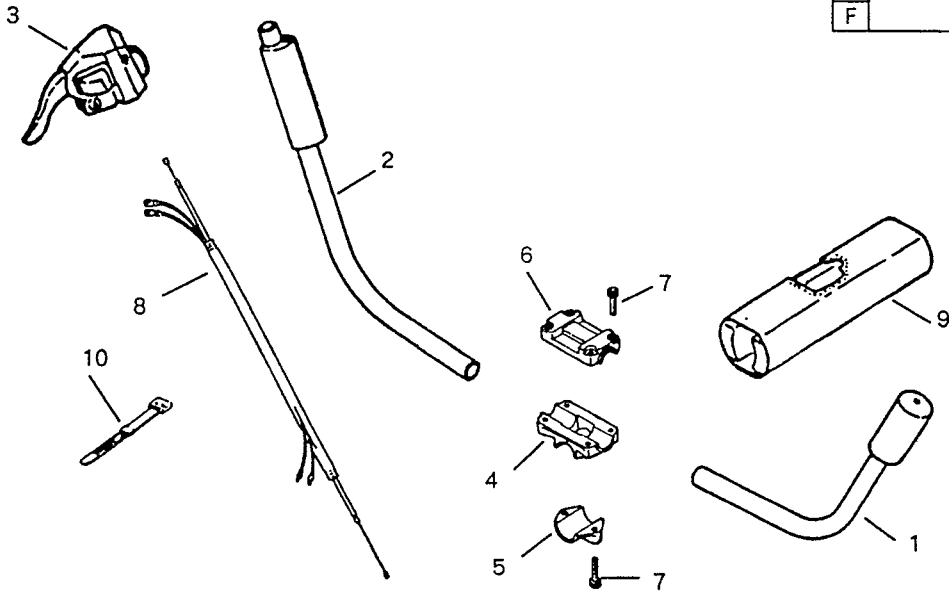


Pos.nr.	Best.nr.	Tekst
01	10-101007	Adapter for BC 220
01a	10-101008	Adapter for 340 M
01b	10-101010	Adapter for 431 M
02	10-101061	Spolehus
03	10-106003	Snørestyr
04	10-101030	Spole
05	10-103025	Låsering
06	10-101053	Bund for spolehus
06a	10-201003	Komplet bund pos. 5-12
07	10-107006	Fjeder
08	10-101069	Fjederholder
09	10-101070	Kugleskål
10	10-102073	Stålkugle
11	10-101071	Kugleholder
12	10-101056	Bolt
13	10-109006	Nøgle
14	22007100	Snørehoved for BC 220 7 MM
15	34008125	Snørehoved for 340 M 8 MM
16	43110125	Snørehoved for 431 M 10 MM

FIG. 14 HANDLE KIT (OPTIONAL ACC.)

MODEL CODE

A	DL60	KZ - EURO. & OTHER
B		
C		
D		
E		
F		

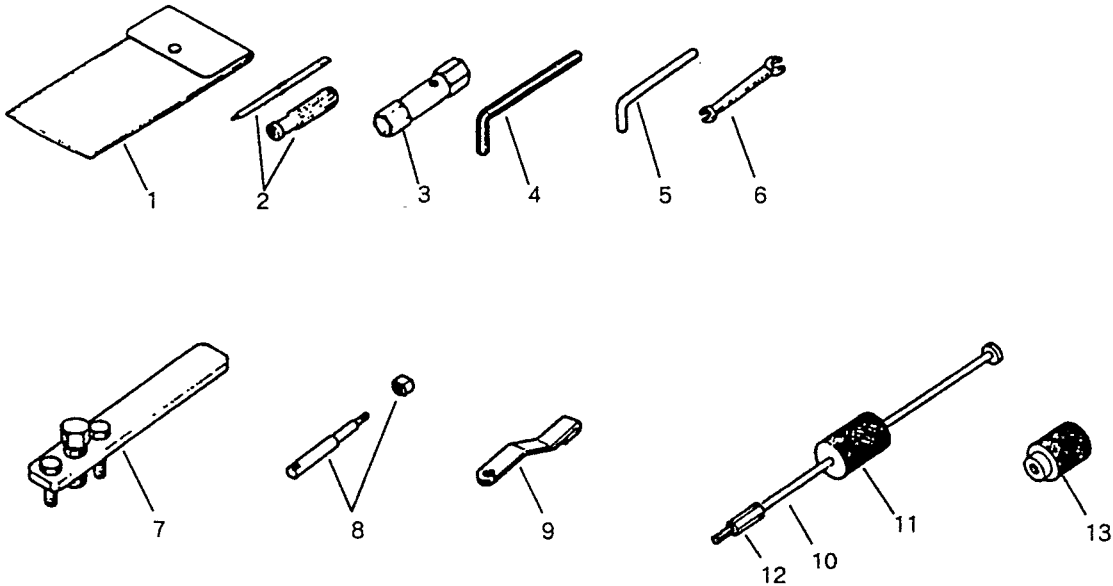


Index No.	Description	Part Number	Remarks	Q'ty per unit					
				A	B	C	D	E	F
1	HANDLE KIT	6112 - 92001	5 1 to 10	(1)	(1)	(1)	(1)	(1)	(1)
	LEFT HANDLE COMP.	3540 - 14200	5 ✓	(1)	(1)	(1)	(1)	(1)	(1)
	RIGHT HANDLE ASS'Y	6041 - 92200	5 ✓	(1)	(1)	(1)	(1)	(1)	(1)
2	HANDLE COMP., right	6242 - 14400	5 ✓	(1)	(1)	(1)	(1)	(1)	(1)
	THROTTLE LEVER	6234 - 14601	5 ✓	(1)	(1)	(1)	(1)	(1)	(1)
4	BRACKET ASS'Y	3257 - 14101	5 4 to 7	(1)	(1)	(1)	(1)	(1)	(1)
	BRACKET	3257 - 14111	5 ✓	(1)	(1)	(1)	(1)	(1)	(1)
5	CAP. lower	3257 - 14122	5 ✓	(1)	(1)	(1)	(1)	(1)	(1)
6	CAP. upper	3257 - 14151	5 ✓	(1)	(1)	(1)	(1)	(1)	(1)
7	BOLT (M5x22)	01252 - 30522	5 ✓	(6)	(6)	(6)	(6)	(6)	(6)
8	CABLE COMP.	6112 - 92100	10	(1)	(1)	(1)	(1)	(1)	(1)
9	PROTECTOR	3523 - 17111	5 ✓	(1)	(1)	(1)	(1)	(1)	(1)
10	BAND	3540 - 93120		(1)	(1)	(1)	(1)	(1)	(1)

• : Part not assigned for the version. () : Optional part.

FIG. 15 SERVICE TOOLS

MODEL CODE		
A	DL60	KZ - EURO. & OTHER
B		
C		
D		
E		
F		



Index No.	Description	Part Number	Remarks	Q'ty per unit					
				A	B	C	D	E	F
1	TOOL SET	3520 - 91000	5 1 to 6	1	1	1	1	1	1
	BAG	1030 - 91112		1	1	1	1	1	1
2	SCREWDRIVER	1030 - 91340		1	1	1	1	1	1
3	SOCKET (Hex 13x19)	3239 - 91310		1	1	1	1	1	1
4	WRENCH (Hex 4)	09007 - 00425		1	1	1	1	1	1
5	BAR	3540 - 91110		1	1	1	1	1	1
6	SPANNER (Hex 8x10)	3540 - 91120		1	1	1	1	1	1
7	PULLER ASS'Y	1600 - 96100	Flywheel	(1)	(1)	(1)	(1)	(1)	(1)
8	ROD ASS'Y	1101 - 96220	Piston pin	(1)	(1)	(1)	(1)	(1)	(1)
9	STOPPER	1664 - 96410	Piston	(1)	(1)	(1)	(1)	(1)	(1)
10	SHAFT	3238 - 99110	Gear case	(1)	(1)	(1)	(1)	(1)	(1)
11	WEIGHT	3238 - 99120	Gear case	(1)	(1)	(1)	(1)	(1)	(1)
12	ADAPTER (M7 L.H.)	3560 - 99130	Gear case	(1)	(1)	(1)	(1)	(1)	(1)
13	BLOCK	3520 - 96510	Gear case	(1)	(1)	(1)	(1)	(1)	(1)

* : Part not assigned for the version. () : Optional part.