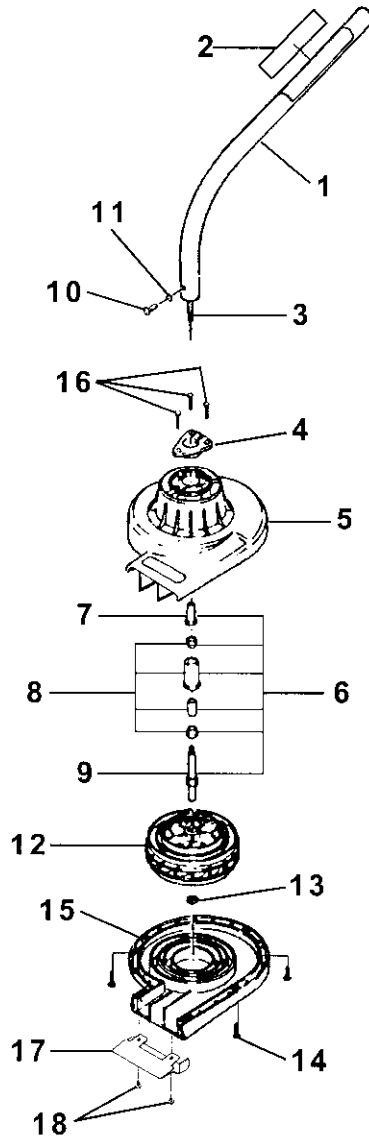


F2040 (UT20791)
 ST725 (UT15178)

BLOWER ATTACHMENT



No.	Part No.	Description	Qty.
1	UP 03920	DRIVESHAFT HOUSING	1
2	07852	DECAL-Warning	1
3	A 07844	CABLE-Flex	1
4	GM 23520 5	CLAMP	1
5	A 07932	UPPER HOUSING	1
6	A 07933 A	BEARING HOUSING	1
7	UP 04713	ADAPTER-Arbor	1
8	GM 16030 5	BUSING	1
9	UP 04699	SHAFT-Arbor	1
10	UP 04112	SCREW (10-24 x .312")	1
11	UP 04123	WASHER, Lock (#10)	1
12	UP 04714	IMPELLER	1
13	UP 04701	CLIP	1
14	UP 04141	SCREW, Pan Hd. (8-16 x .750)	1
15	UP 04697	LOWER HOUSING	1
16	UP 04250	SCREW-Thread Forming (8-16 x 1")	1
17	GM 28690 3	GUARD-Lower Housing	1
18	GM 01110 8	SCREW (10-16 x 1/4")	1

Torque Specs			
Item No.	In/Lbs	Nm	Required Loctite
10	25-35	2.8-4.0	
14	35-45	4.0-5.1	
16	35-45	4.0-5.1	
18	5-20	.56-2.3	

Warranty Flat Rate		
Job	Description	Time/Hr.
CD81	Fan, Blower	.4
FN12	Driveshaft	.2
FN13	Driveshaft Hsg.	.3

* **Note:** Blower must be completely disassembled to install the flex cable.