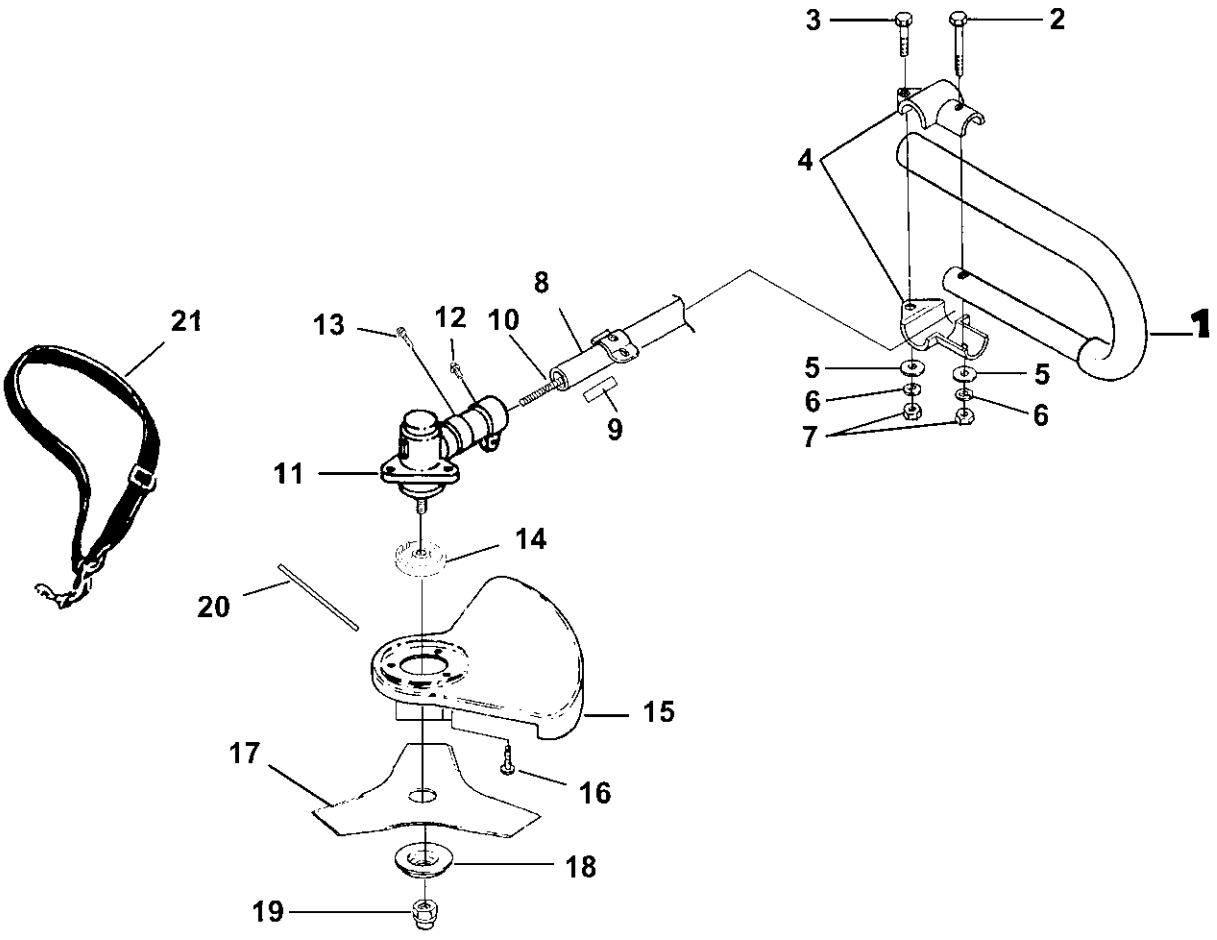


F2040 (UT20791)
 ST725 (UT15178)

BRUSHCUTTER ATTACHMENT



No.	Part No.	Description	Qty.
1	A 07159	HANDLE("J")	1
2	UP 04154	SCREW-Hex Hd. (1/4-20 X 1 1/2")	1
3	UP 04158	SCREW-Hex Hd. (1/4-20 X 1")	1
4	UP 04105	CLAMP-Handle Bar	2
5	UP 04251	WASHER-Flat (1/4")	2
6	UP 03409	WASHER-Lock (1/4")	2
7	UP 03399	NUT-Hex (1/4-20)	2
8	UP 03956	DRIVESHAFT HOUSING (Lower)	1
9	UP 04115	DECAL-Warning	1
10	UP 04369	SHAFT-Flexible	1
11	UP 04124	GEAR HEAD	1
12	82586	Screw, Cap Hd. (1/4-20 X 7/8")	5
13	UP 04254	Screw-Hex Hd. (10-24 x 1/2")	2
14	UP 04126	WASHER-Flanged	1
15	UP 05070	BLADE GUARD	1
16	UP 04254	SCREW	3
17	D 98717 C	BLADE-Tri-Arc™	1
18	UP 04129	WASHER-Cupped (Lower)	1
19	UP 04127	NUT-Hex (L.H.)	1
20	UP 04100	TOOL-Holding Pin	1
21	UP 00108	HARNES	1

Torque Specs			
Item No.	In/Lbs	Nm	Required Loctite
7	90-100	10.2-11.3	
12	15-20	1.7-2.3	
13	40-50	4.5-5.6	
19	100-120	11.3-13.6	

Warranty Flat Rate		
Job	Description	Time/Hr.
FN12	Driveshaft	.3
FN15	Gearhead	.3
FN16	Blade Guard	.3
FD20	Front Handle	.2