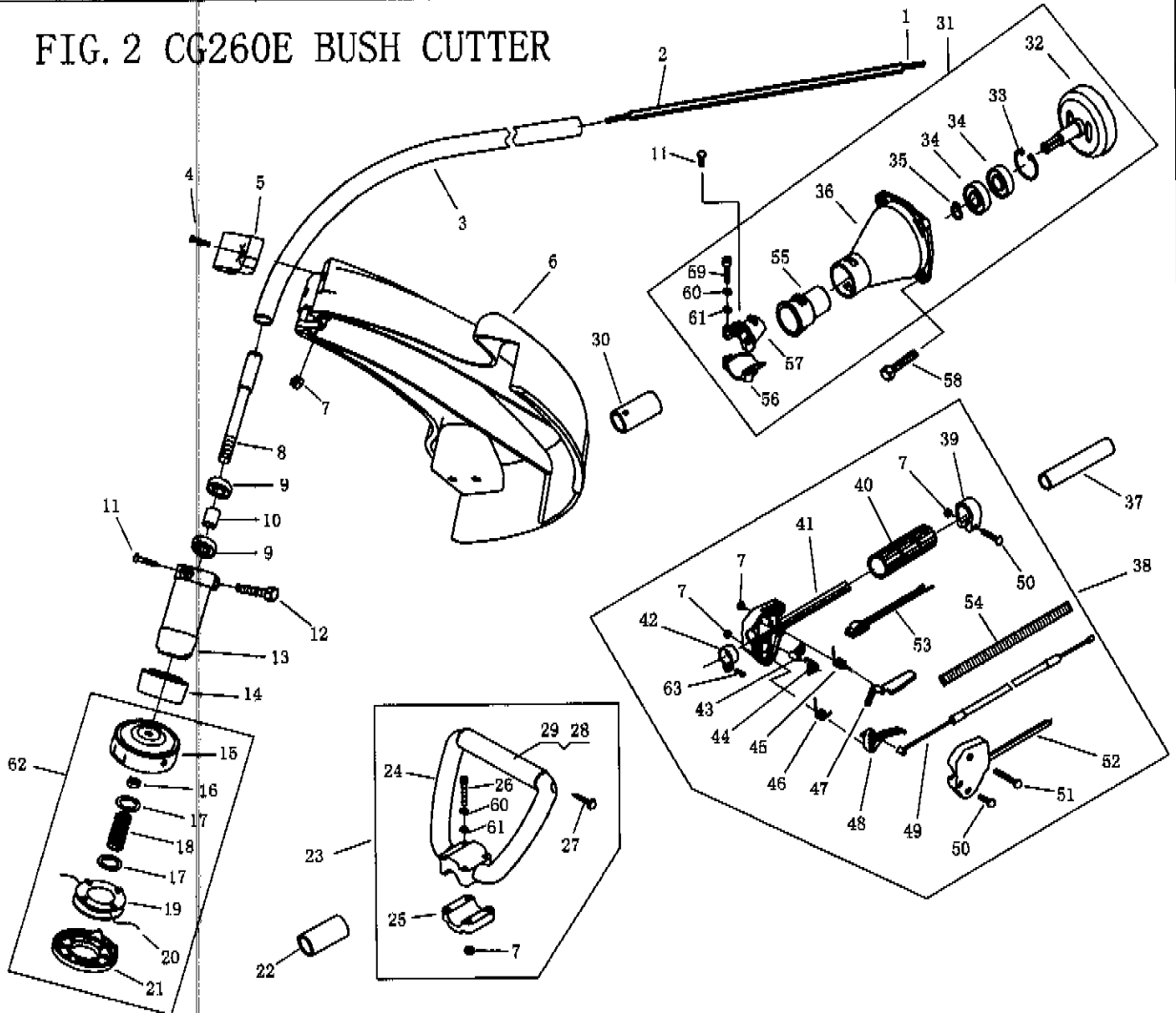


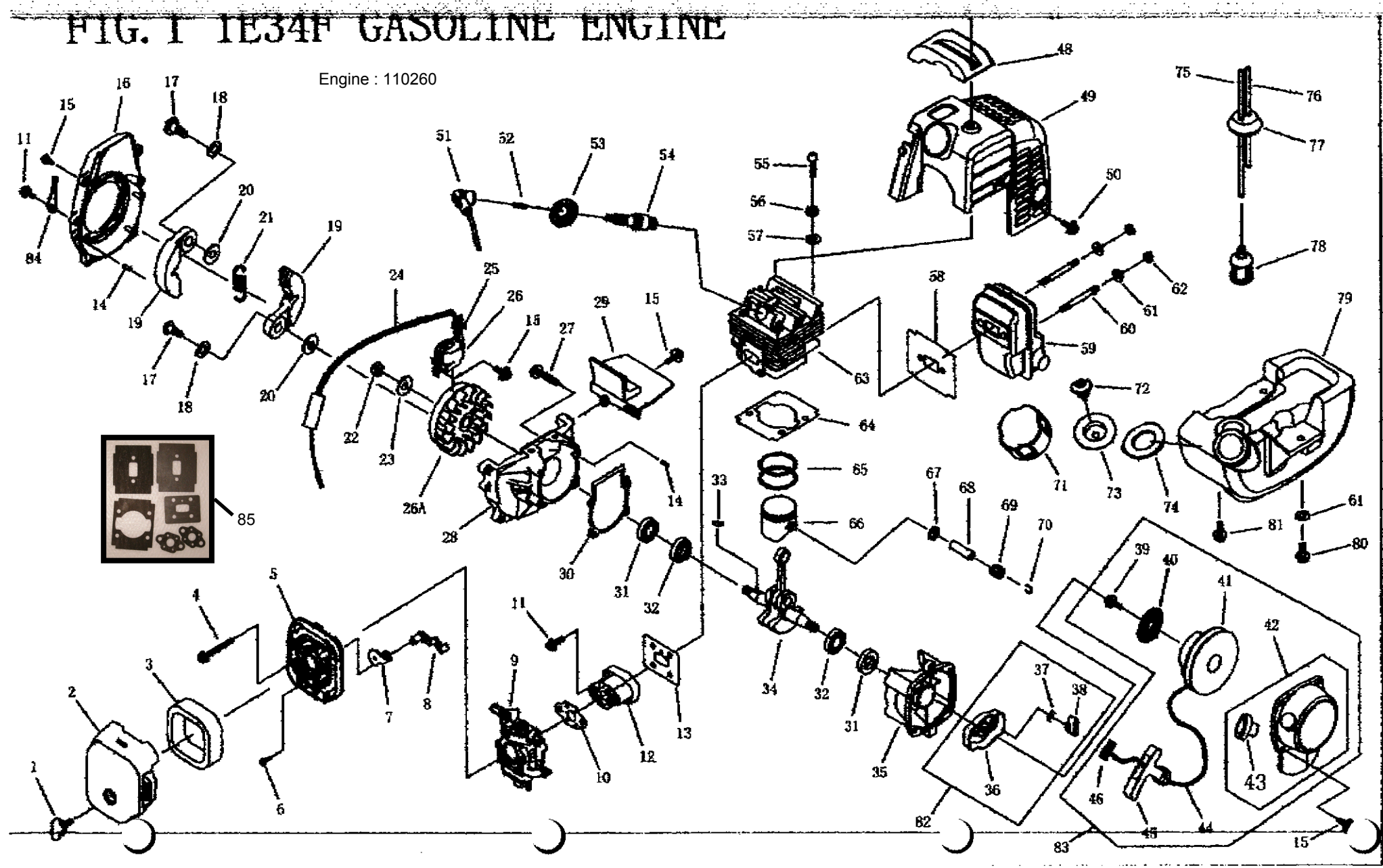
# FIG. 2 CG260E BUSH CUTTER



| NO. | Part NO.     | Part Name          | Qty. | NO. | Part NO.      | Part Name           | Qty. | NO. | Part NO.      | Part Name         | Qty. |
|-----|--------------|--------------------|------|-----|---------------|---------------------|------|-----|---------------|-------------------|------|
| 1   | CG305F. 5    | Flexible Shaft     | 1    | 22  | CG260E-3      | Bush                | 1    | 43  | CG305F. 13-10 | Tine              | 1    |
| 2   | CG260E. 1-2  | Bracket            | 1    | 23  | CG305F. 6     | Holder Ass'y        | 1    | 44  | CG305F. 13-11 | Spring            | 1    |
| 3   | CG260E. 1-1  | Pipe               | 1    | 24  | CG305F. 6-1   | Holder              | 1    | 45  | CG305F. 13-9  | Spring            | 1    |
| 4   | GB292        | Screw M5x35        | 2    | 25  | CG305F. 6-2   | Cap, Lower          | 1    | 46  | CG305F. 13-1  | Spring            | 1    |
| 5   | CG260E-6     | Holder             | 1    | 26  | GB/T70. 1     | Screw M5×35         | 4    | 47  | CG305F. 13-8  | Safety Lever      | 1    |
| 6   | CG260E-5     | Safety Guard       | 1    | 27  | GB/T845       | Screw ST4.8×22      | 2    | 48  | CG305F. 13-2  | Throttle Lever    | 1    |
| 7   | GB/T889. 1   | Nut M5             | 13   | 28  | CG305F. 6-3   | Core Shaft          | 2    | 49  | CG260. 2. 2   | Cable Comp.       | 1    |
| 8   | CG260E. 2-1  | Linker Shaft       | 1    | 29  | CG305F. 6-4   | Handle Cover        | 1    | 50  | GB/T9074. 4   | Screw M5×25       | 2    |
| 9   | GB/T276      | Bearing 608-2RS/P5 | 2    | 30  | CG260E-1      | Bush                | 1    | 51  | GB/T9074. 4   | Screw M5×35       | 1    |
| 10  | CG260E. 2-4  | Pipe               | 1    | 31  | CG260. 1      | Clutch Comp.        | 1    | 52  | CG305F. 13-3  | Box, Left         | 1    |
| 11  | GB/T9074. 4  | Screw M5×12        | 2    | 32  | CG260. 1. 1   | Clutch Drum Comp.   | 1    | 53  | CG260. 2. 1   | Stop Switch       | 1    |
| 12  | GB/T9074. 13 | Screw M5×20        | 1    | 33  | GB/T893. 1    | Stop Ring 35        | 1    | 54  | CG260. 2-1    | Tube              | 1    |
| 13  | CG260E. 2-3  | Linker             | 1    | 34  | GB/T276       | Bearing 6202-2RS/P5 | 2    | 55  | CG305F. 14-2  | Rubber Cover      | 1    |
| 14  | CG260E. 2-2  | Holder             | 1    | 35  | GB/T894. 1    | Stop Ring 15        | 1    | 56  | CG305F. 14-3  | Clamp B           | 1    |
| 15  | CG305F. 8. 1 | Case               | 1    | 36  | CG260. 1-1    | Linker              | 1    | 57  | CG305F. 14-4  | Clamp A           | 1    |
| 16  | CG260E-T2    | Right Nut          | 1    | 37  | CG260E-2      | Bush                | 1    | 58  | GB/T9074. 13  | Screw M6×20       | 4    |
| 17  | CG305F. 8-5  | Washer             | 2    | 38  | CG260. 2      | Lever Ass'y         | 1    | 59  | GB/T70. 1     | SCREW M5×25       | 2    |
| 18  | CG305F. 8-3  | Spring             | 1    | 39  | CG305F. 13-5  | Clamp               | 1    | 60  | GB/T97. 1     | Washer 5          | 6    |
| 19  | CG305F. 8-1  | Cord Holder        | 1    | 40  | CG305F. 13-6  | Rubber Cover        | 1    | 61  | GB/T93        | Washer 5          | 6    |
| 20  |              | Cord Φ2. 5×4200    | 1    | 41  | CG305F. 13-4  | Box, Right          | 1    | 62  | CG305F. 8     | Nylon Cutter Head | 1    |
| 21  | CG305F. 8-2  | Cover              | 1    | 42  | CG305F. 13. 2 | Clamp               | 1    | 63  | GB9074. 4     | Screw M5×16       | 1    |

# FIG. 1 IE34F GASOLINE ENGINE

Engine : 110260



| R. NO | PART NO.     | PART NAME             | QTY. | SER. NO | PART NO.        | PART NAME            | QTY. | SER. NO | PART NO.          | PART NAME             | QTY. |
|-------|--------------|-----------------------|------|---------|-----------------|----------------------|------|---------|-------------------|-----------------------|------|
| 1     | 1E34F. 1.2   | SCREW                 | 1    | 29      | 1E34F-4         | GUIDE PLATE          | 1    | 58      | 1E34F-3           | GASKET                | 1    |
| 2     | 1E34F. 1-4   | CLEANER OUTSIDE COVER | 1    | 30      | 1E34F. 7-2      | CRANK CASE GASKET    | 1    | 59      | 1E34F. 2          | MUFFLER COMP.         | 1    |
| 3     | 1E34F. 1-1   | CLEANER ELEMENT       | 1    | 31      | 1E36F. 2        | OIL SEAL             | 2    | 60      | 1E34F-14          | BOLT                  | 2    |
| 4     | GB9074. 4    | SCREW M5x55           | 2    | 32      | GB276           | BALL BEARING 6001/P5 | 2    | 61      | GB96              | WASHER 5              | 3    |
| 5     | 1E34F. 1. 1  | CLEANER INSIDE COVER  | 1    | 33      | 1E40FP-32. 3-1  | KEY                  | 1    | 62      | GB6187            | NUT M5                | 2    |
| 6     | GB845        | SCREW ST4. 2x12-F-H   | 1    | 34      | 1E34F. 6. 1     | CRANK SHAFT COMP.    | 1    | 63      | 1E34F-8           | CYLINDER              | 1    |
| 7     | 1E34F. 1-3   | CHOKE                 | 1    | 35      | 1E34F. 7-3      | REAR HALF CRANK CASE | 1    | 64      | 1E34F-9           | CYLINDER WASHER       | 1    |
| 8     | 1E34F. 1-2   | CHOKE HANDLE          | 1    | 36      | 1E34F. 8. 1     | STARTER PULLEY ASS'Y | 1    | 65      | 1D34F. 6-5        | PISTON RING           | 2    |
| 9     | WYJ 244      | CARBURETOR            | 1    | 37      | 1E34F. 8-2      | STARTER PAWL SPRING  | 1    | 66      | 1E34F. 6-6        | PISTON                | 1    |
| 10    | 1E34F-1      | GASKET                | 1    | 38      | 1E34F. 8-1      | STARTER PAWL         | 1    | 67      | 1E34F. 6-1        | STOP RING             | 2    |
| 11    | GB9074. 4    | SCREW M5x20           | 6    | 39      | GB9074. 6       | SCREW M5x10          | 1    | 68      | 1E34F. 6-3        | PISTON PIN            | 1    |
| 12    | 1E34F. 4     | INLET MANIFOLD        | 1    | 40      | 1E34F. 11-1     | RECOIL SPRING        | 1    | 69      | 1E34F. 6-4        | NEEDLE BEARING        | 1    |
| 13    | 1E34F-2      | CYLINDER WASHER       | 1    | 41      | 1E34F. 11-2     | STARTER ROPE REEL    | 1    | 70      | 1E34F. 6-2        | PISTON PIN CIRCLET    | 2    |
| 14    | GB119        | ANNUIL B3x10          | 4    | 42      | 1E34F. 11. 1    | RECOIL STARTER BODY  | 1    | 71      | EB-415. 4. 1-1    | FUEL TANK LID         | 1    |
| 15    | GB9074. 4    | SCREW M4x16           | 9    | 43      | 1E34F. 11. 1-1  | ROPE GUIDE           | 1    | 72      | EB-415. 4. 1. 1-1 | ATRINLET MOUTH        | 1    |
| 16    | 1E34F-6      | FAN COVER             | 1    | 44      | 1E34F. 11-3     | ROPE                 | 1    | 73      | EB-415. 4. 1. 1-3 | FRAME                 | 1    |
| 17    | 1E34F-12     | CLUTCH STEP SCREW     | 2    | 45      | 1E36F. 1-1      | STARTER HANDLE       | 1    | 74      | EB-415. 4. 1. 1-2 | GASKET                | 1    |
| 18    | 1E34F-13     | WASHER                | 2    | 46      | 1E36F. 1-5      | GASKET               | 1    | 75      | 1E34F. 9. 2-2     | OUTLET FUEL PIPE      | 1    |
| 19    | 1E34F. 10. 1 | CLUTCH SHOE COMP.     | 2    | 47      | GB9074. 4       | SCREW M5x14          | 1    | 76      | 1E34F. 9. 2-1     | INLET FUEL PIPE       | 1    |
| 20    | 1E34F-11     | WASHER                | 2    | 48      | 1E34F-6         | COVER                | 1    | 77      | 1E36FF. 8. 1-1    | PRIMARY CORD GROMMET  | 1    |
| 21    | 1E34F. 10-1  | CLUTCH SPRING         | 1    | 49      | 1E34F. 3        | COVER                | 1    | 78      | 1E34F. 9. 2-3     | CLEANER               | 1    |
| 22    | GB6171       | NUT M8x1              | 1    | 50      | GB9074. 4       | SCREW M4x12          | 1    | 79      | 1E34F. 9. 1       | FUEL TANK             | 1    |
| 23    | GB97. 1      | WASHER 8              | 1    | 51      | 1E34F. 5-2      | PLUG CAP             | 1    | 80      | GB9074. 3         | SCREW M5x16           | 1    |
| 24    | QQ-1         | STOP CORD COMP.       | 1    | 52      | 1E40F-3A. 8-2   | CLICK SPRING         | 1    | 81      | GB9074. 4         | SCREW M5x16           | 2    |
| 25    | 1E34F. 5-1   | PRIMARY CORD GROMMET  | 1    | 53      | 1E34F. 5-3      | PLUG COVER           | 1    | 82      | 1E34F6            | STARTER PULLEY ASS' S | 1    |
| 26    | UK-08922     | MAGNETO STATOR        | 1    | 54      | RCJ6Y(CHAMPION) | SPARK PLUG           | 1    | 83      | 1E34F8            | STARTER               | 1    |
| 26A   | UK-08922     | MAGNETO ROTOR         | 1    | 55      | GB70            | SCREW M5x20          | 4    | 84      | 1E36FF-11         | FLASH PAN             | 1    |
| 27    | GB907        | SCREW M5x25           | 4    | 56      | GB93            | WASHER 5             | 4    | 85      | 860260            | ENGINE GASKETKIT      |      |
| 28    | 1E34F. 7-1   | FRONT HALF CRANK CASE | 1    | 57      | 48              | WASHER 5             | 1    |         |                   |                       |      |